

在Oracle VM VirtualBox Manager上安裝並配置FindIT Network Manager和FindIT Network Probe

目標

Cisco FindIT Network Management提供的工具可幫助您使用Web瀏覽器輕鬆監控、管理和配置Cisco 100至500系列網路裝置，例如交換機、路由器和無線接入點(WAP)。它還通知您有關裝置和思科支援通知，例如新韌體的可用性、裝置狀態、網路設定更新，以及任何不再享受保修或不受支援合約覆蓋的已連線裝置。

FindIT Network Management是一個分散式應用程式，由兩個獨立的元件或介面組成：一個或多個稱為FindIT網路探測的探測和一個稱為FindIT網路管理器的管理器。

安裝在網路中每個站點的FindIT Network Probe例項執行網路發現，並與每個思科裝置直接通訊。在單個站點網路中，您可以選擇運行FindIT網路探測的獨立例項。但是，如果您的網路包含多個站點，您可以在方便的位置安裝FindIT Network Manager，並將每個探測與Manager相關聯。從Manager介面，您可以獲得網路中所有站點的狀態的高級檢視，並在要檢視特定站點的詳細資訊時連線到安裝在特定站點的探測器。

本文提供有關如何使用Oracle VM VirtualBox Manager安裝和配置FindIT Network Manager和FindIT Network Probe的說明。

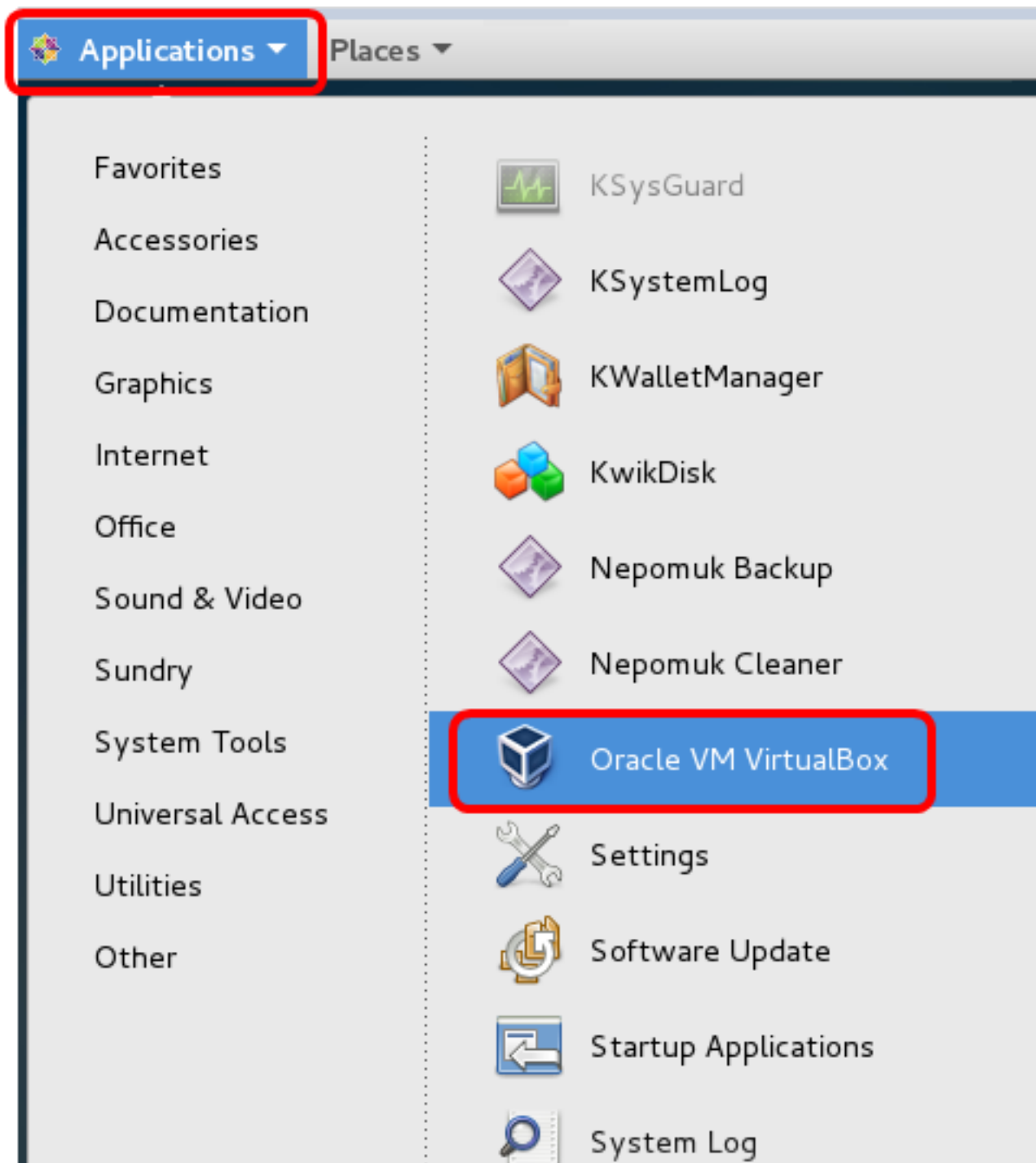
在Oracle VM VirtualBox Manager上安裝FindIT Network Manager

安裝FindIT網路管理器

按照以下步驟將開放式虛擬裝置(OVA)虛擬機器(VM)映像部署到Oracle VM VirtualBox Manager。

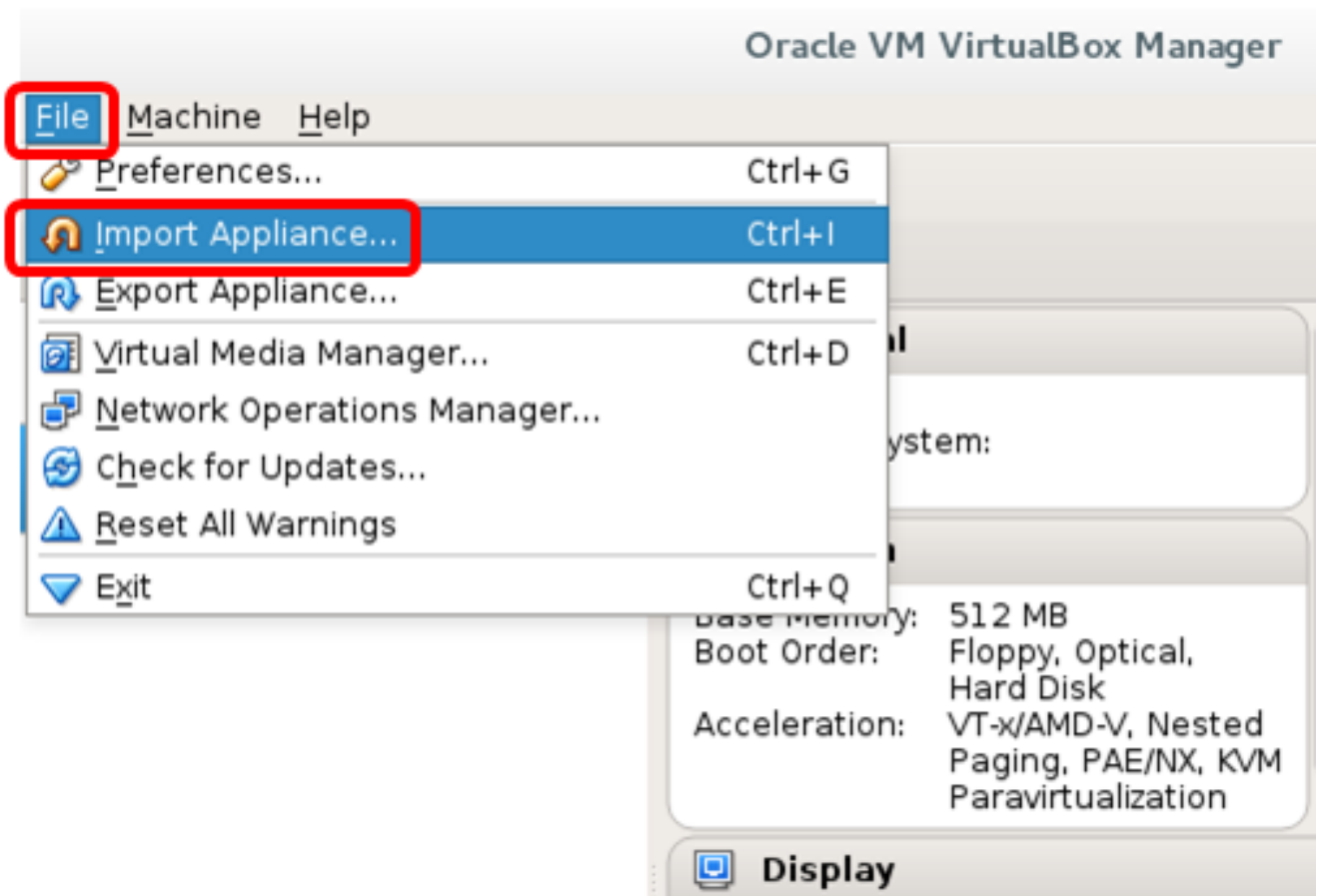
步驟1. 從思科S系列站點下載FindIT網路管理器OVA [VM映像](#)。

步驟2. 在伺服器或電腦上運行Oracle VM VirtualBox Manager。



附註：本示例使用CentOS 7作業系統。

步驟3.按一下「File」>「Import Appliance」。



步驟4.按一下**Browse**按鈕。

Import Virtual Appliance

Appliance to import

VirtualBox currently supports importing appliances saved in the Open Virtualization Format (OVF). To continue, select the file to import below.



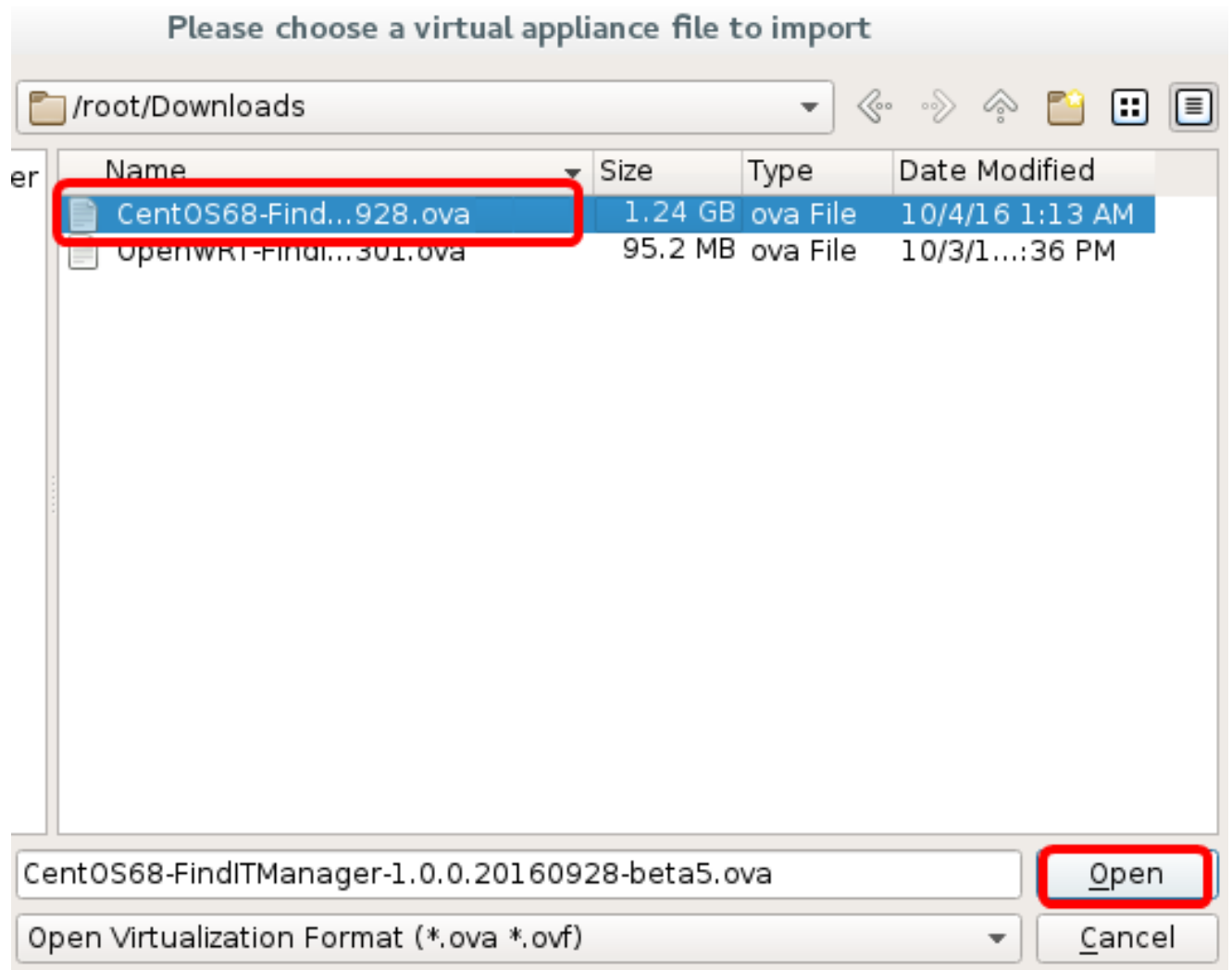
Expert Mode

< Back

Next >

Cancel

步驟5.按一下步驟1中下載的OVA映像，然後按一下Open。



步驟6.按一下下一步繼續。

Import Virtual Appliance

Appliance to import

VirtualBox currently supports importing appliances saved in the Open Virtualization Format (OVF). To continue, select the file to import below.

Downloads/CentOS68-FindITManager-1.0.0.20160928.ova



Expert Mode

< Back

Next >








Cancel

步驟7. (可選) 按兩下 *Name* 欄位以更改裝置名稱。

Import Virtual Appliance

Appliance settings

These are the virtual machines contained in the appliance and the suggested settings of the imported VirtualBox machines. You can change many of the properties shown by double-clicking on the items and disable others using the check boxes below.

Description	Configuration
Virtual System 1	
 Name	FindIT Network Manager
 Guest OS Type	 Red Hat (64-bit)
 CPU	1
 RAM	2048 MB
 Floppy	<input checked="" type="checkbox"/>
 DVD	<input checked="" type="checkbox"/>

Reinitialize the MAC address of all network cards

Appliance is not signed

Restore Defaults

< Back

Import

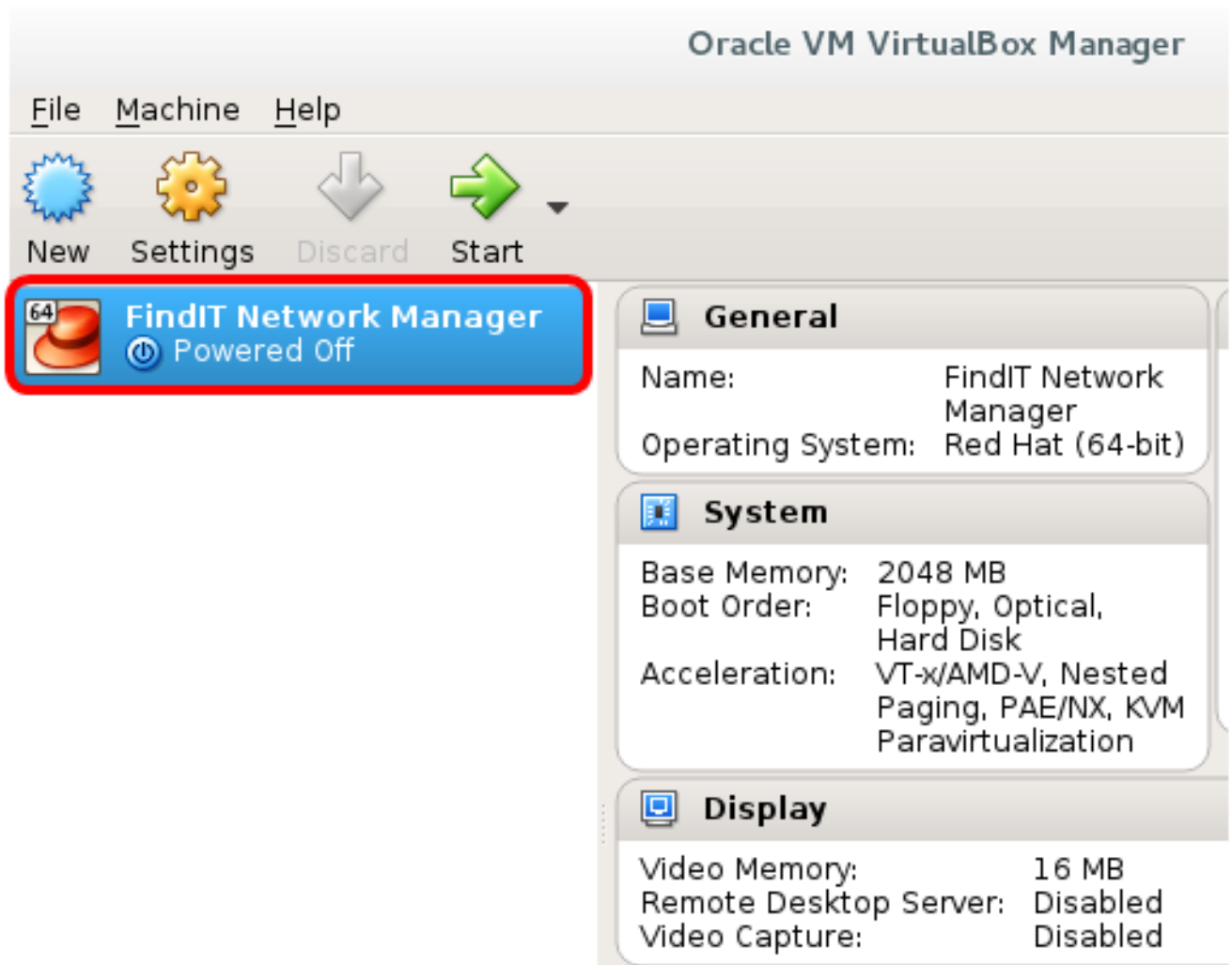
Cancel

附註：本示例使用FindIT Network Manager。

步驟8.按一下「Import」。

附註：成功部署後，FindIT網路管理器將顯示在虛擬機器清單中。

步驟9.在左側面板上，按一下選擇部署的FindIT Network Manager裝置。



步驟10.按一下**Start**以訪問VM的控制檯。

配置部署的FindIT網路管理器

使用您的首選虛擬機器完成FindIT網路管理器的部署後，請按照以下步驟配置虛擬機器。

步驟1.訪問FindIT網路管理器虛擬機器的控制檯。

步驟2.使用預設使用者名稱和密碼登入到控制檯：cisco/cisco。

FindITManager login: **cisco**
Password: **cisco**

步驟3.系統提示您變更思科帳戶的密碼後，請輸入當前密碼。


```
CentOS release 6.8 (Final)
Kernel 2.6.32-642.3.1.el6.x86_64 on an x86_64

FindITManager login: cisco
Password:
You are required to change your password immediately (root enforced)
Changing password for cisco.
(current) UNIX password:
```

步驟4.輸入並重新鍵入思科帳戶的新密碼。

```
CentOS release 6.8 (Final)
Kernel 2.6.32-642.3.1.el6.x86_64 on an x86_64

FindITManager login: cisco
Password:
You are required to change your password immediately (root enforced)
Changing password for cisco.
(current) UNIX password:
New password:
Retype new password: _
```

將顯示DHCP IP地址和管理GUI地址。

```
CentOS release 6.8 (Final)
Kernel 2.6.32-642.3.1.el6.x86_64 on an x86_64

FindITManager login: cisco
Password:
You are required to change your password immediately (root enforced)
Changing password for cisco.
(current) UNIX password:
New password:
Retype new password:

-----
FindIT Manager (1.0.0.20160928-beta)
Powered by CentOS release 6.8 (Final)

IP Address: 192.168.1.101      Administration GUI: https://192.168.1.101
Enter 'sudo config_om' to change platform settings and set a static IP a
-----

[cisco@FindITManager ~]$ _
```

附註：在本示例中，FindIT網路管理器的IP地址為192.168.1.101，管理GUI地址為https://192.168.1.101。

步驟5.輸入sudoconfig_vm命令以啟動初始安裝嚮導。

```
[cisco@FindITManager cisco]$ sudo config_vm
```

步驟6.輸入sudo的密碼。預設密碼為cisco。如果已更改，請輸入新密碼。

```
[cisco@FindITManager ~]$ cd /opt/cisco  
[cisco@FindITManager cisco]$ sudo config_vm  
[sudo] password for cisco:
```

步驟7.在安裝嚮導中輸入y表示「是」，輸入n表示「否」，以配置主機名、網路、NTP伺服器
和時區。

```
Config a hostname ? (y/n) : y
```

步驟8. (可選) 如果在配置網路時指定了DHCP，請輸入ifconfig命令檢查分配的IP地址並記住
它。也可以配置靜態IP。

```
[cisco@FindITManager cisco]$ ifconfig
```

現在，您應該已經在VM上完成了FindIT Network Manager安裝。

若要瞭解如何訪問和配置FindIT網路管理器的初始設定，請按一下[此處](#)獲取說明。

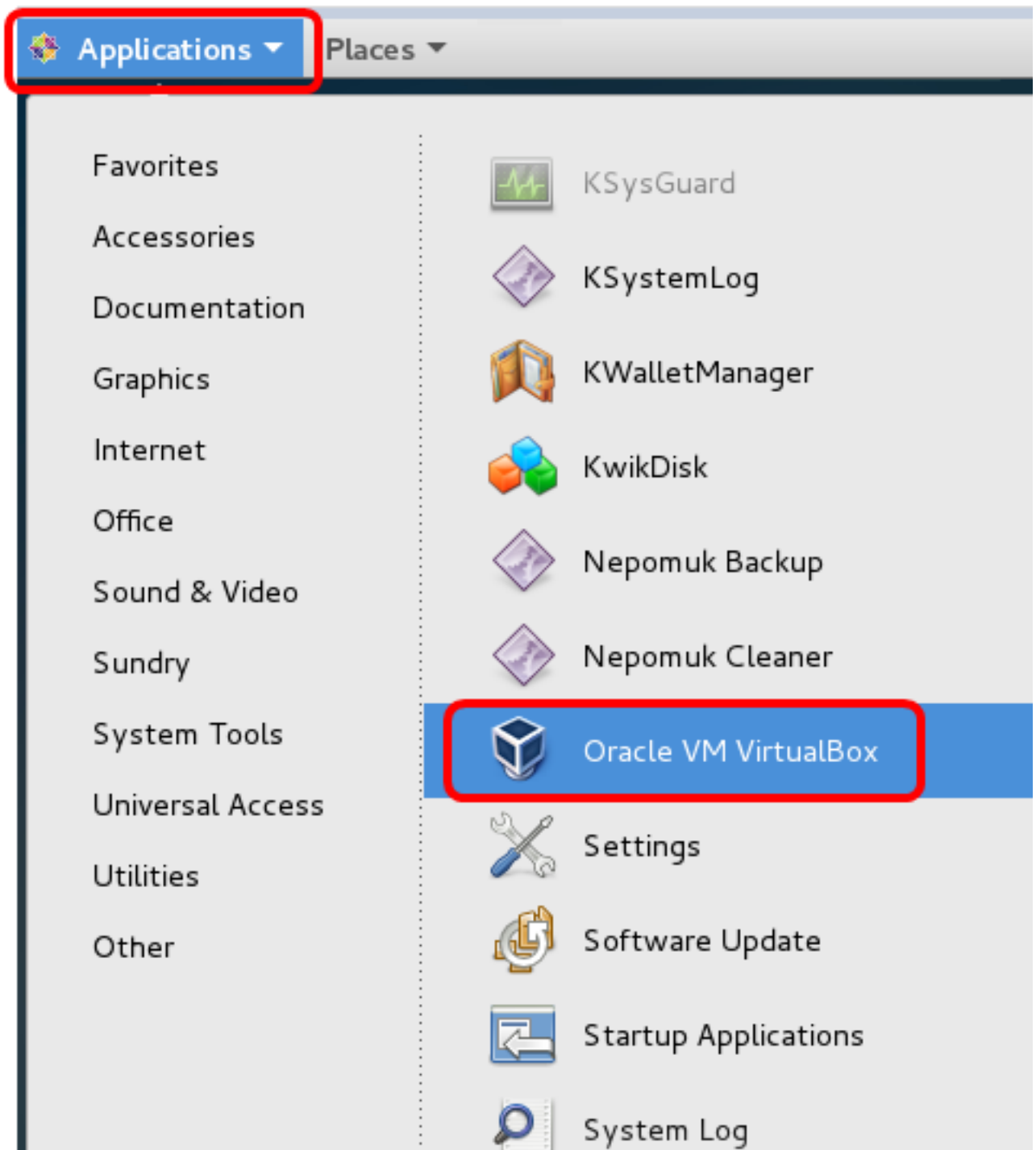
在Oracle VM VirtualBox Manager上安裝FindIT網路探測

安裝FindIT網路探測

按照以下步驟將OVA VM映像部署到Oracle VM VirtualBox Manager。

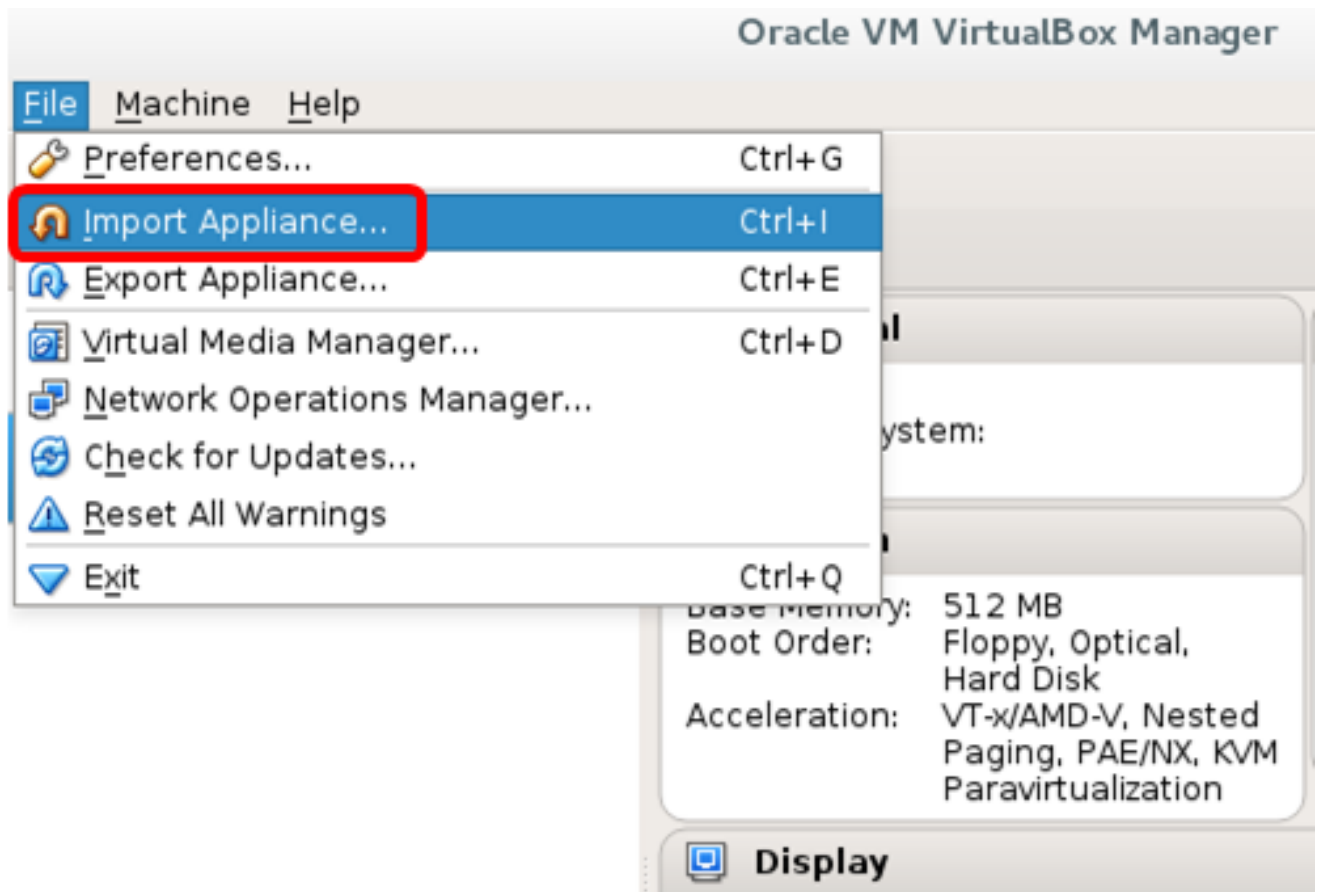
步驟1.從思科S系列站點下載FindIT Network Probe OVA VM[映像](#)。

步驟2.在伺服器或電腦上運行VirtualBox Manager。



附註：本示例使用CentOS 7作業系統。

步驟3.按一下「File」>「Import Appliance」。



步驟4.按一下**Browse**按鈕。

Import Virtual Appliance

Appliance to import

VirtualBox currently supports importing appliances saved in the Open Virtualization Format (OVF). To continue, select the file to import below.

A file selection icon, represented by a folder with a green checkmark, is located at the right end of the text input field. The icon is highlighted with a red square border.

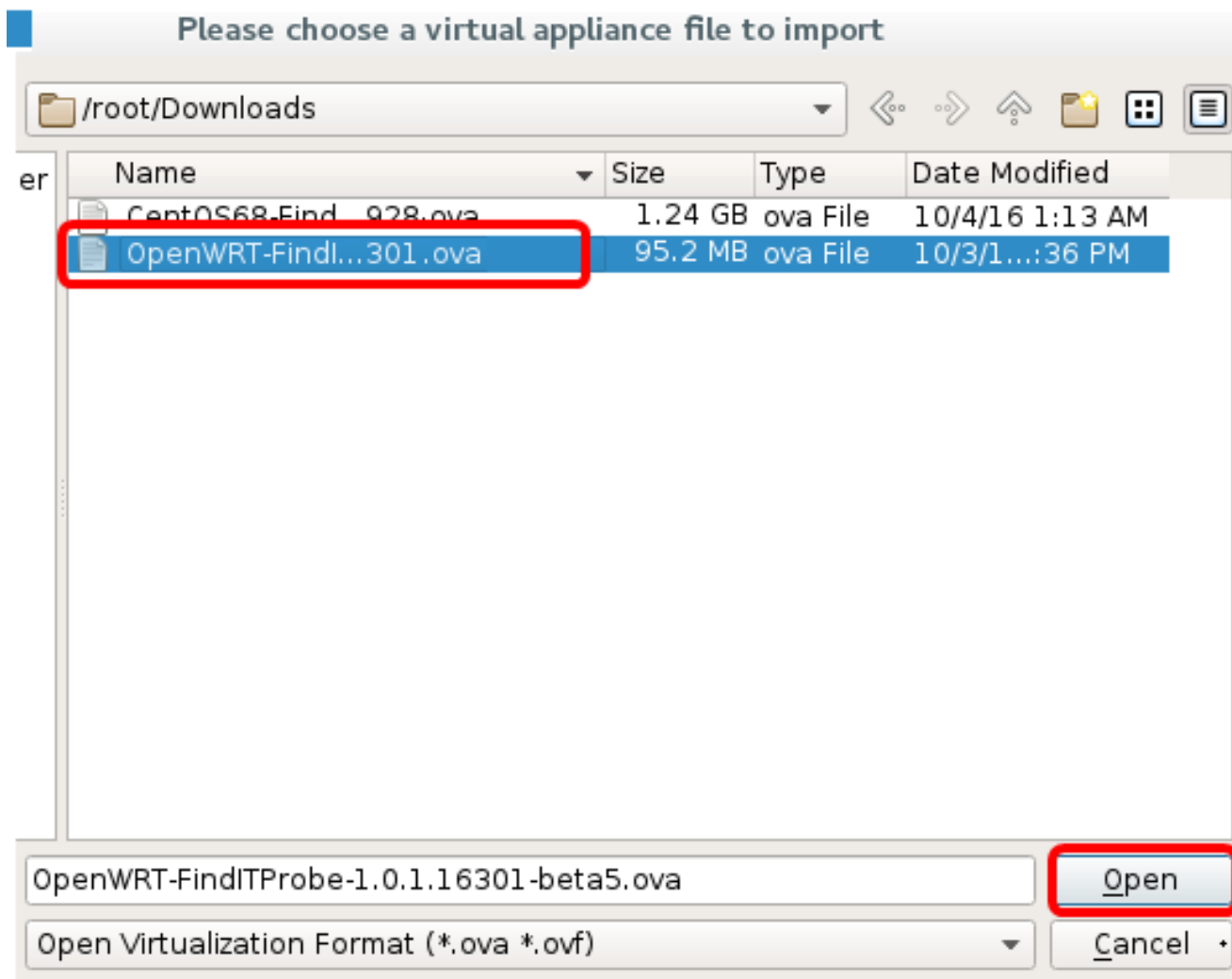
Expert Mode

< Back

Next >

Cancel

步驟5.按一下步驟1中下載的OVA映像，然後按一下Open。



步驟6.按一下下一步繼續。

Import Virtual Appliance

Appliance to import

VirtualBox currently supports importing appliances saved in the Open Virtualization Format (OVF). To continue, select the file to import below.

/root/Downloads/OpenWRT-FindITProbe-1.0.1.16301.ova



Expert Mode

< Back

Next >








Cancel

步驟7. (可選) 按兩下 *Name* 欄位以更改裝置名稱。

Import Virtual Appliance

Appliance settings

These are the virtual machines contained in the appliance and the suggested settings of the imported VirtualBox machines. You can change many of the properties shown by double-clicking on the items and disable others using the check boxes below.

Description	Configuration
Virtual System 1	
 Name	FindIT Network Probe
 Guest OS Type	 Linux 2.6 / 3.x / 4.x (64-bit)
 CPU	1
 RAM	512 MB
 Network Adapter	<input checked="" type="checkbox"/> Intel PRO/1000 MT Desktop (...)
 Storage Controller (IDE)	PIIX4

Reinitialize the MAC address of all network cards

Appliance is not signed

Restore Defaults

< Back

Import

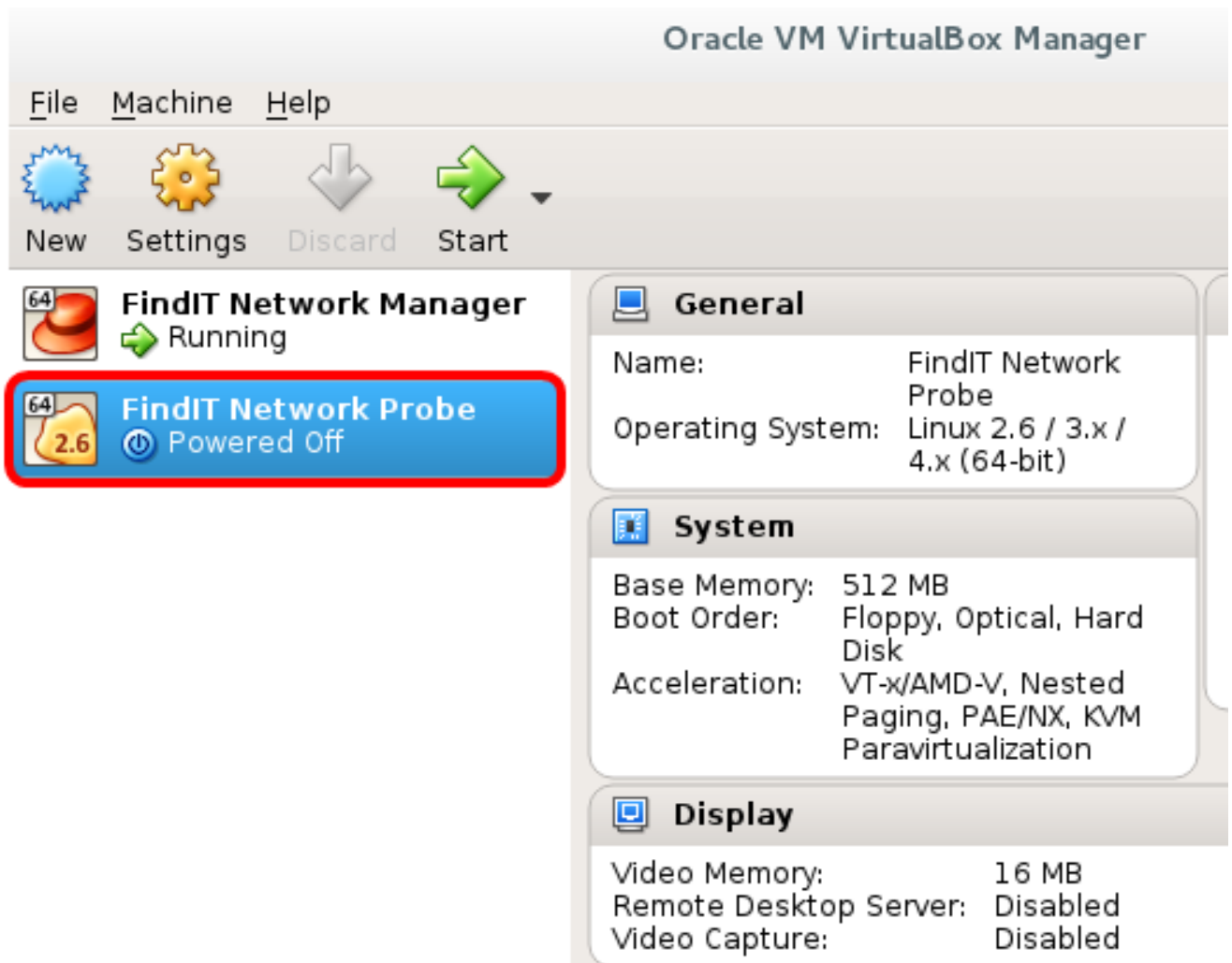
Cancel

附註：本示例使用FindIT Network Probe。

步驟8.按一下「Import」。

附註：成功部署後，FindIT網路探測將在虛擬機器清單中顯示。

步驟9.在左側面板上，按一下選擇已部署的FindIT Network Probe裝置。



步驟10.按一下**Start**以訪問VM的控制檯。

配置已部署的 FindIT 網路探測

部署完成後，請按照以下步驟配置VM。

步驟1.訪問FindIT網路探測虛擬機器的控制檯。

步驟2.使用預設使用者名稱和密碼登入到控制檯：cisco/cisco。

FindITProbe login: cisco

Password: cisco

系統將提示您更改思科帳戶的密碼。將顯示DHCP IP地址和管理GUI地址。

```
BusyBox v1.23.2 (2016-09-02 17:15:18 CST) built-in shell (ash)

-----
FindIT Probe (1.0.1.16301)
Powered by OpenWrt CHAOS CALMER (15.05, r47955)

IP Address: 192.168.1.102      Administration GUI: https://192.
Enter 'config_vm' to change platform settings and set a stati
-----

Changing password for cisco
New password: _
```

附註：在本示例中，FindIT網路探測的IP地址為192.168.1.102。

步驟3.輸入並重新鍵入思科帳戶的新密碼。

```
Changing password for cisco
New password:
Retype password:
Password for cisco changed by cisco
cisco@FindITProbe:~# _
```

步驟4. (可選) 輸入ifconfig命令以查詢FindIT網路探測的IP地址。

```
cisco@FindITProbe:~# ifconfig
eth0      Link encap:Ethernet  HWaddr 08:0C:29:6F:2E:DD
          inet addr:192.168.1.102  Bcast:192.168.1.255  Mask:
          inet6 addr: fe80::20c:29ff:fe6f:2edd/64  Scope:Link
          inet6 addr: fec0::20c:29ff:fe6f:2edd/64  Scope:Site
          UP BROADCAST RUNNING MULTICAST  MTU:1500  Metric:1
          RX packets:149596 errors:0 dropped:0 overruns:0 fra
          TX packets:205206 errors:0 dropped:0 overruns:0 car
          collisions:0 txqueuelen:1000
          RX bytes:26494354 (25.2 MiB)  TX bytes:183876308 (1
lo        Link encap:Local Loopback
          inet addr:127.0.0.1  Mask:255.0.0.0
          inet6 addr: ::1/128  Scope:Host
          UP LOOPBACK RUNNING  MTU:65536  Metric:1
          RX packets:73994 errors:0 dropped:0 overruns:0 fram
          TX packets:73994 errors:0 dropped:0 overruns:0 carr
          collisions:0 txqueuelen:0
          RX bytes:33273411 (31.7 MiB)  TX bytes:33273411 (31
```

現在，您應該在電腦上配置FindIT網路探測。

若要瞭解如何訪問和配置FindIT網路探測的初始設定，請按一下[此處](#)獲取說明。若要瞭解如何

將FindIT網路探測與FindIT網路管理器相關聯，請按一下[此處](#)獲取說明。