

# 更換主機板後，B460 M4刀鋒伺服器發現失敗

## 目錄

[簡介](#)

[必要條件](#)

[需求](#)

[採用元件](#)

[背景](#)

[發現問題](#)

[發現失敗率3% — 韌體不匹配](#)

[解決方案](#)

[發現失敗率5% — 主機板控制器韌體不匹配](#)

[解決方案](#)

[發現失敗率7% - CPU不匹配](#)

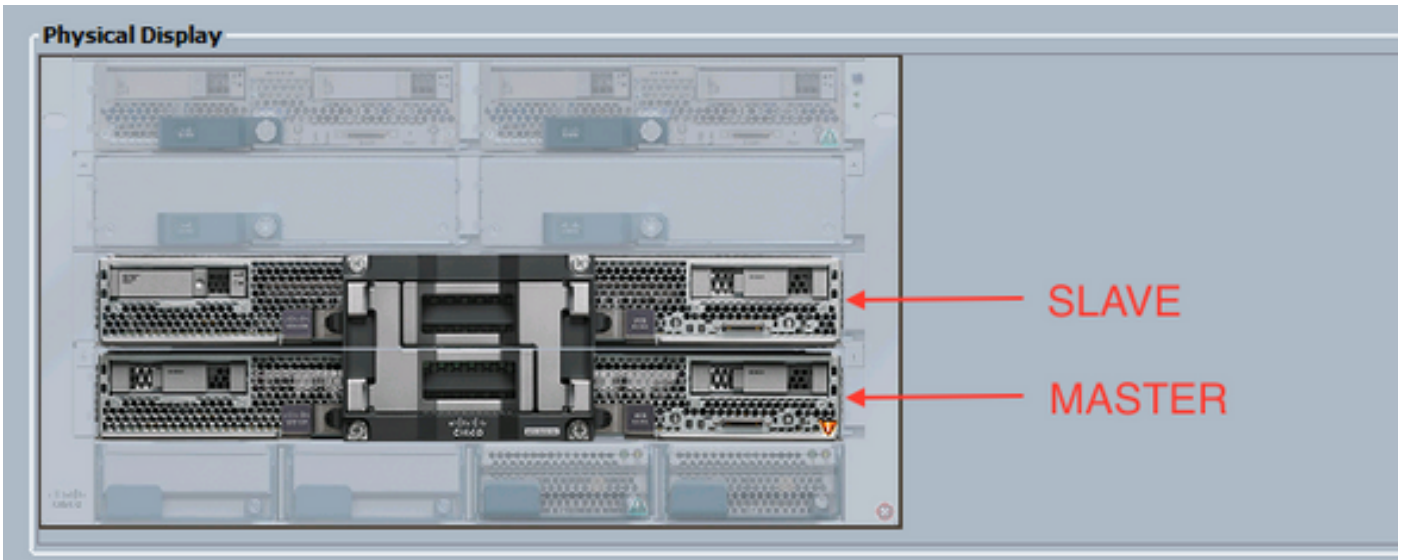
[解決方案](#)

B460 M4

UCS B460 M4UCS Manager(UCSM)

- B460 M4
- UCS
- 2.2(3b)

B460 M4M4(B260 M4)



3% —

3% CIMC CIMB460 M4

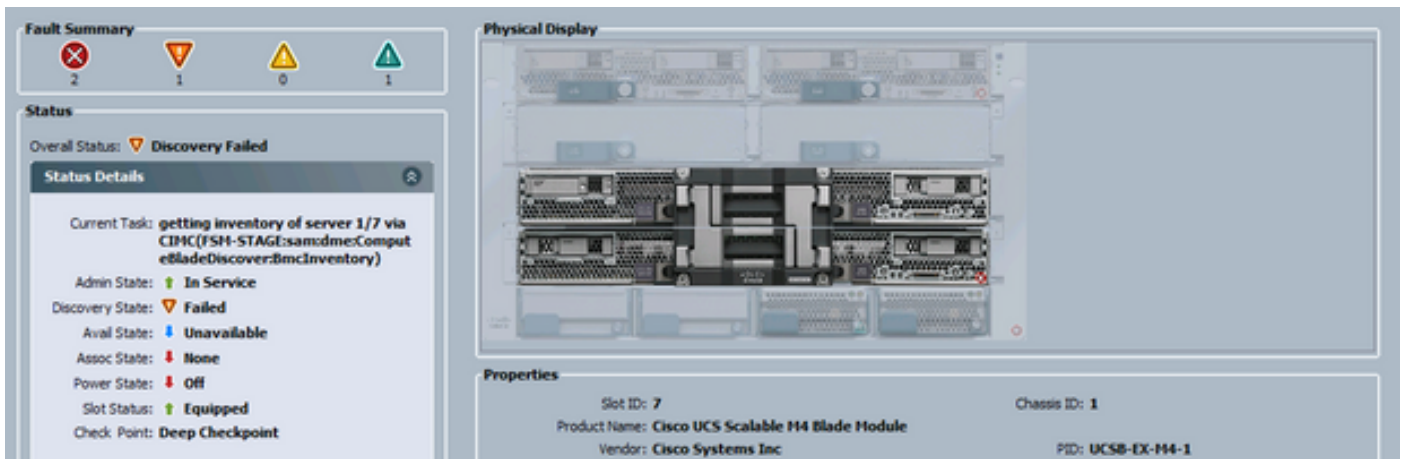
附註：以下示例顯示了CIMC韌體中的不匹配，但同一過程適用於不匹配的CIMC、BIOS和主機板控制器韌體。

The screenshot shows a management console interface. At the top, it displays 'PSM Status: Fail'. Below this, it shows the current PSM name as 'Discover' and the completion time as '2016-04-21T20:56:20'. The progress status is shown as 1%. The remote invocation result is 'Service Not Supported' with an error code of 630. The description of the error is 'Aggregate blade CIMC firmware version mismatch. Activate same firmware version on both CIMC'.

Below the error message is a 'Stop Sequence' table with the following data:

Order	Name	Description	Status	Timestamp	Try
1	Discover Bmc Presence	checking CIMC of server 1/7 PSM-STAGE...	Success	2016-04-21T20:56:08	1
2	Discover Bmc Inventory	getting inventory of server 1/7 via CIMC...	Fail	2016-04-21T20:56:20	1
3	Discover Pmc Initialize		Skip	2009-12-31T19:00:00	0
4	Discover Sanitize		Skip	2009-12-31T19:00:00	0
5	Discover Check Power Availability		Skip	2009-12-31T19:00:00	0
6	Discover Blade Power On		Skip	2009-12-31T19:00:00	0
7	Discover Config Fc Local		Skip	2009-12-31T19:00:00	0
8	Discover Config Fc Peer		Skip	2009-12-31T19:00:00	0
9	Discover Config User Access		Skip	2009-12-31T19:00:00	0
10	Discover Mc Presence Local		Skip	2009-12-31T19:00:00	0
11	Discover Mc Presence Peer		Skip	2009-12-31T19:00:00	0

Overall Status Discovery Failed



可通過命令列(CLI)檢查不匹配的韌體，如下所示。在下面的輸出中，第一個CIMC是主裝置，第二個是從裝置。

```
UCS-A# show system firmware expand detail
```

```
Server 7:
```

```
  CIMC:
```

```
    Running-Vers: 2.2(3b)
    Package-Vers:
    Update-Status: Ready
    Activate-Status:
    Startup-Vers:
    Backup-Vers: 2.2(3a)
    Bootloader-Vers: 2.2(3b).33
```

```
  CIMC:
```

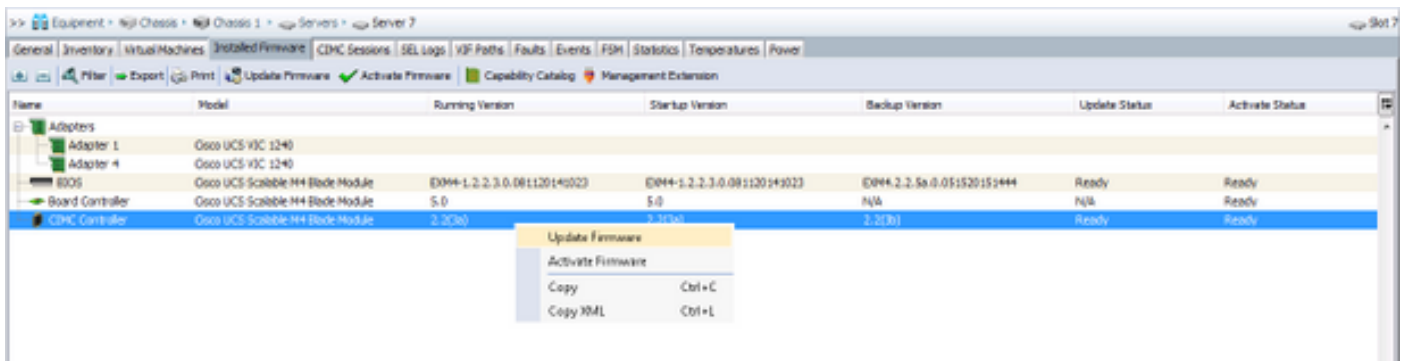
```
    Running-Vers: 2.2(3a)
    Package-Vers:
    Update-Status: Ready
    Activate-Status:
    Startup-Vers:
    Backup-Vers: 2.2(3b)
    Bootloader-Vers: 2.2(3a).33
```

```
  CIMC:
```

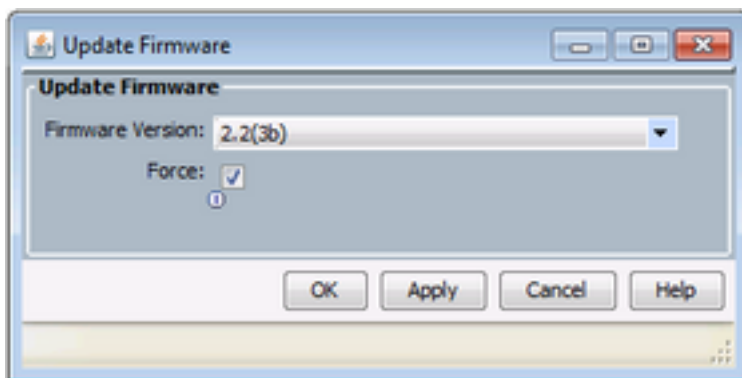
```
    Running-Vers: 2.2(3b)
    Package-Vers: 2.2(3b)B
    Update-Status: Ready
    Activate-Status: Ready
    Startup-Vers: 2.2(3b)
    Backup-Vers: 2.2(3b)
    Bootloader-Vers: 2.2(3b).33
```

1)Equipment > Chassis > Chassis # > Servers > Server # > Installed Firmware

2)BIOSCIMCUpdate FirmwareCIMC2.2(3b)



### 3)ForceApply



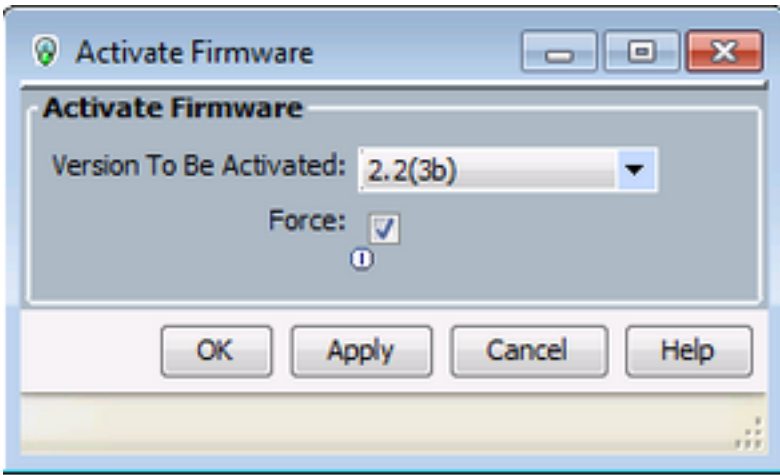
提示：如果不知道要從下拉選單中選擇哪個版本，伺服器管理員可以導航到**Equipment > Firmware Management > Packages**，展開ucs-k9-bundle-b-series. *VERSION.B.bin*並查詢「ucs-EXM4」。將包含三個元件：bios(BIOS)、brdprog (主機板控制器)和cimc (CIMC控制器)。

提示：由於無法降級主機板控制器韌體，如果替換主機板附帶的主機板控制器韌體版本不在域中的任何刀片系列軟體包中，則網路管理員可以下載包含所需主機板控制器版本韌體的刀片系列軟體包。要驗證哪個刀片系列軟體包包含所需的韌體，請檢視Cisco UCS Manager的發行捆綁包內容。

### 4)Update StatusActivate StatusReadyBackup Version

提示：伺服器管理員可以從**Equipment > Chassis > Chassis # > Servers > Server # > Inventory tab > CIMCtab > Update Status**監控更新狀態

### 5)ForceApply

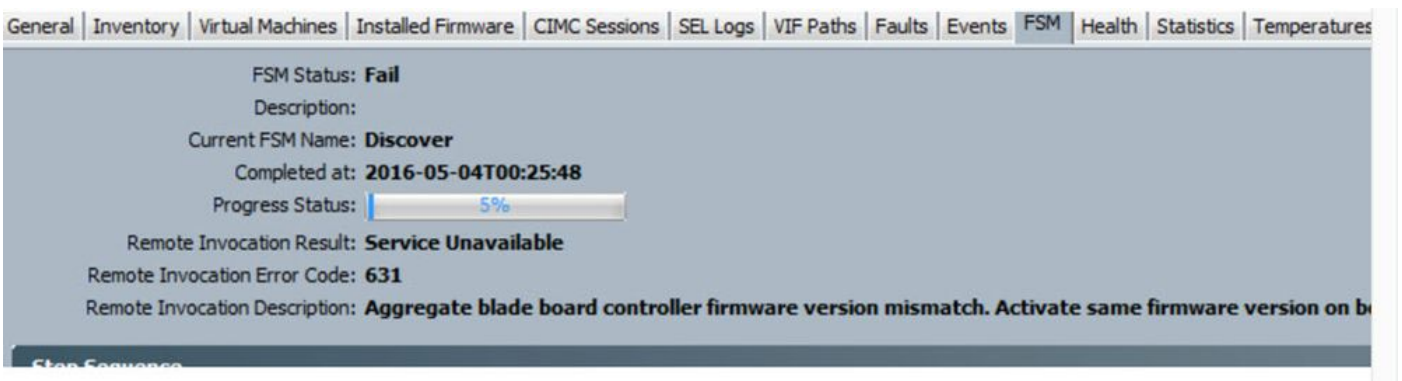


6)Installed FirmwareActivate StatusReady

7)GeneralOverall StatusInaccessibleDiscovery

5% —

**注意:**在此故障情形中，發現失敗率為5%，且遠端呼叫DescriptionAggregate刀片式伺服器板控制器韌體版本不匹配。啟用兩個主機板控制器上的相同固件版本，如下圖所示。這可能是因為更換主機板或刀片模組具有與先前存在的B460 M4伺服器不同的韌體。



可通過命令列(CLI)檢查不匹配的韌體，如下所示。在下面的輸出中，第一個主機板控制器是主控制器，第二個是從控制器。

```
srini-2gfi-96-b-A /chassis/server # show firmware board controller detail
Server 2/7:
Board Controller:
  Running-Vers: 2.0 <<<<
  Package-Vers: 2.2(7.156)B
  Activate-Status: Ready
Board Controller: ( Master)
  Running-Vers: 2.0 <<<<
  Package-Vers:
  Activate-Status:
Board Controller: ( Slave)
  Running-Vers: 1.0 <<<<
  Package-Vers:
  Activate-Status:
```

要恢復，請按照以下步驟操作

- 步驟1 在Navigation窗格中，點選Equipment頁籤。
- 步驟2 在「裝置」頁籤上，按一下「裝置」節點。
- 步驟3 在Work窗格中，點選Firmware Management頁籤。  
在Installed Firmware頁籤上，按一下Activate Firmware。
- 步驟4 Cisco UCS Manager GUI開啟「啟用韌體」對話方塊，並驗證Cisco UCS域中所有終端的韌體版本。此步驟可能需要幾分鐘時間，具體取決於機箱和伺服器的數量  
從「啟用韌體」對話方塊選擇欄的「過濾器」下拉選單中，選擇「主機板控制器」。
- 步驟5 Cisco UCS Manager GUI在Activate Firmware對話方塊中顯示所有具有主機板控制器的伺服器。  
對於要更新的主機板控制器，請從「啟動版本」下拉選單中選擇最大/最大版本。(附註：降級是不可能的；始終選擇要啟用的最高版本)
- 步驟6 按一下「OK」(確定)。  
(可選)升級具有不同架構的CPU時，您還可以使用Force Board Controller Activation選項更新韌體版本。例如，當您從Sandy Bridge升級到Ivy Bridge CPU時。
- 步驟8

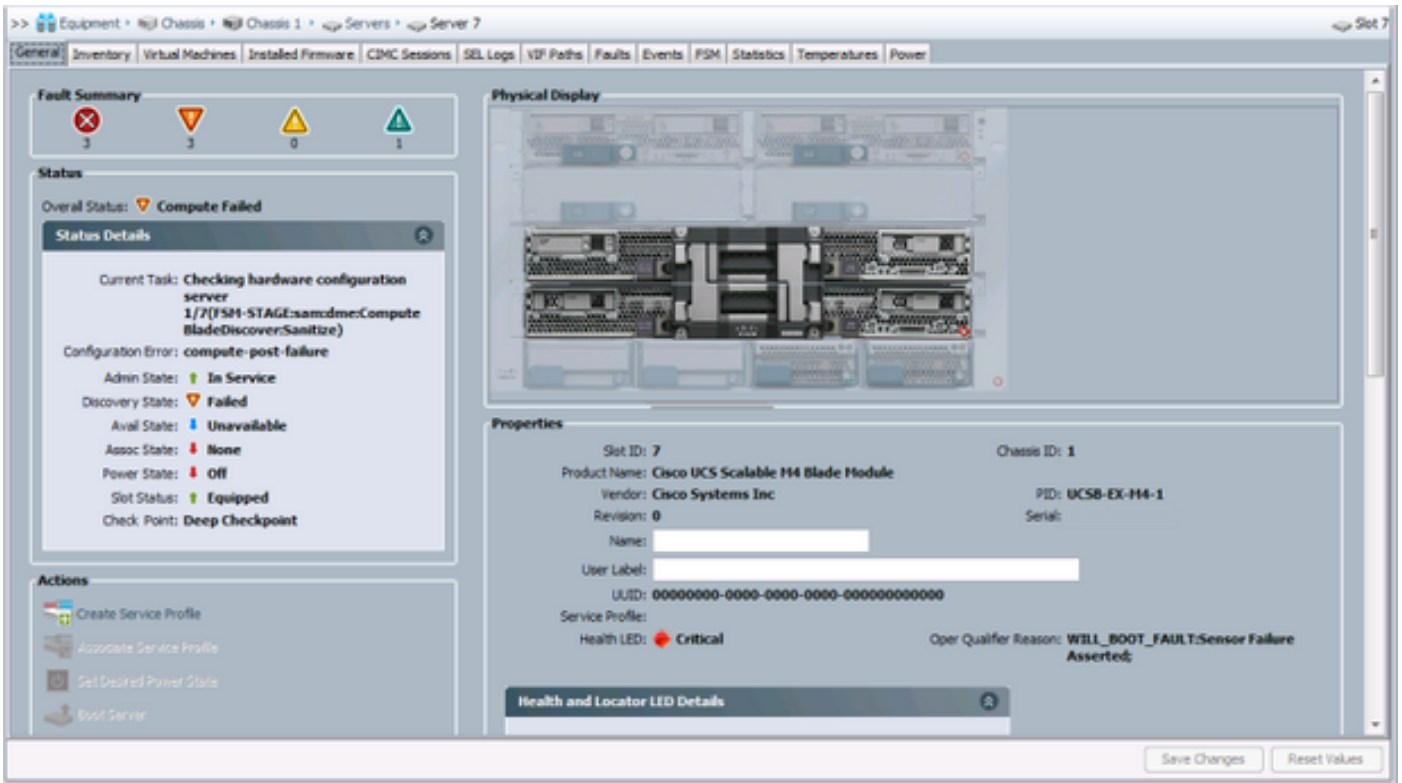
## 7% - CPU

7%,Remote Invocation Description Pre-boot Hardware config failure — /

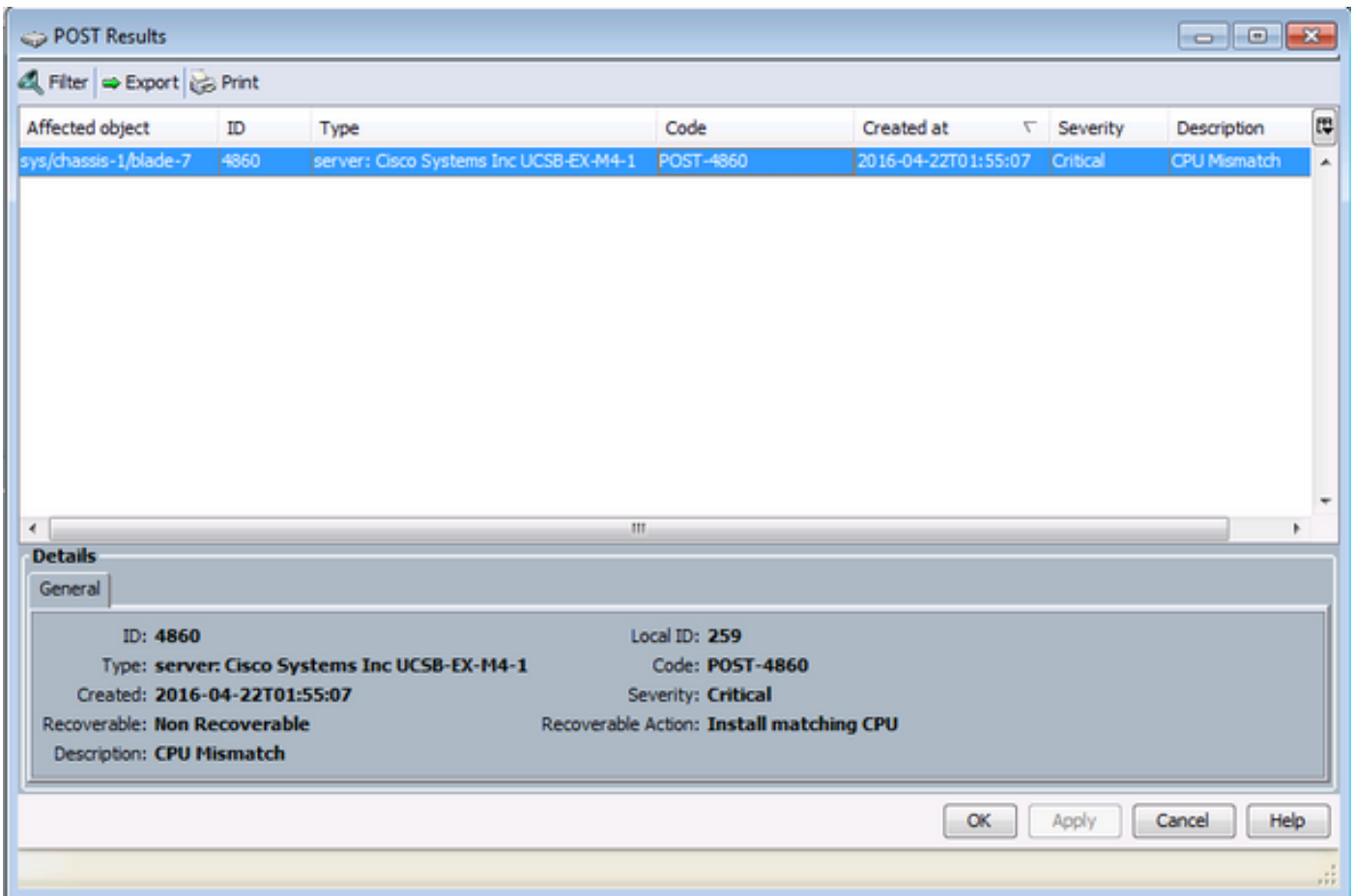
The screenshot shows the Cisco UCS Manager GUI for Server 7. The FSM Status is 'Fail' with a description of 'Pre-boot Hardware config failure - Look at POST/diagnostic results'. The progress bar is at 7%. The Remote Invocation Error Code is 'ERR-insufficiently-equipped'.

Order	Name	Description	Status	Timestamp
1	Discover Bmc Presence	checking CIMC of server 1/7(FSM-STAGE:sam:dme:ComputeBladeDiscover:BmcPresence)	Success	2016-04-22T02:03:07
2	Discover Bmc Inventory	getting inventory of server 1/7 via CIMC(FSM-STAGE:sam:dme:ComputeBladeDiscover:BmcInventory)	Success	2016-04-22T02:03:26
3	Discover Pre Sanitize	Preparing to check hardware configuration server 1/7(FSM-STAGE:sam:dme:ComputeBladeDiscover:PreSan...	Success	2016-04-22T02:03:29
4	Discover Sanitize	Checking hardware configuration server 1/7(FSM-STAGE:sam:dme:ComputeBladeDiscover:Sanitize)	Fail	2016-04-22T02:03:29
5	Discover Check Power Availability		Skip	1969-12-31T19:00:00
6	Discover Blade Power On		Skip	1969-12-31T19:00:00
7	Discover Config Fe Local		Skip	1969-12-31T19:00:00
8	Discover Config Fe Peer		Skip	1969-12-31T19:00:00
9	Discover Config User Access		Skip	1969-12-31T19:00:00
10	Discover Nic Presence Local		Skip	1969-12-31T19:00:00

General Overall StatusCompute Failed



POSTGeneralActionsView Post ResultsCPU



UCS Manager(UCSM)([CSCuv27099](https://www.cisco.com/c/en-us/Support/UCS/UCS-Manager/UCS-Manager-27099.html)) (TAC)