

使用Microsoft Office 365配置Unity Connection的SpeechView

目录

[简介](#)

[先决条件](#)

[要求](#)

[使用的组件](#)

[SpeechView操作](#)

[部署图](#)

[配置](#)

[步骤1. Unity Connection配置](#)

[步骤2. Microsoft Office 365配置](#)

[验证](#)

[故障排除](#)

简介

本文档介绍如何使用Microsoft Office 365配置Cisco Unity Connection 12.5(1)Service Update 3及更高版本，以在Cisco Unity Connection通知中启用SpeechView语音邮件抄写。虽然屏幕截图源自Unity Connection和Microsoft Office 365的特定版本，但概念应适用于任一产品的任何早期版本或更高版本。

先决条件

要求

本文档没有任何特定的要求。

使用的组件

本文档中的信息基于以下软件和硬件版本：

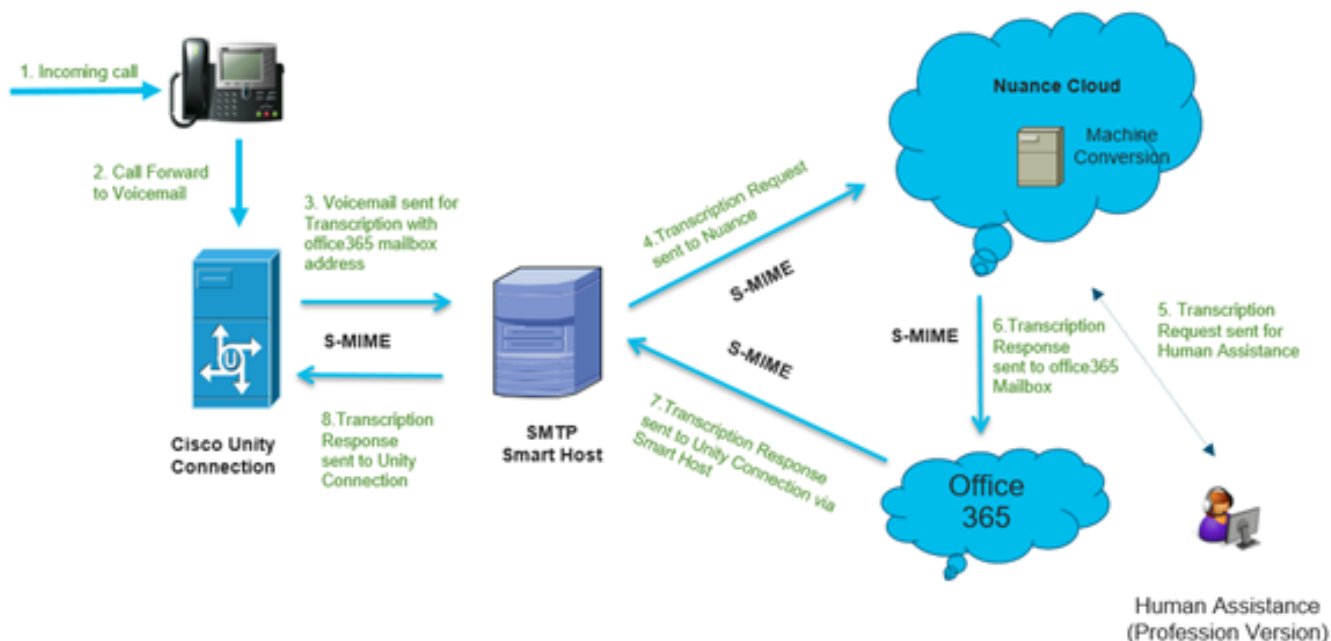
- Unity Connection版本12.5SU3及更高版本
- Microsoft Office 365

本文档中的信息都是基于特定实验室环境中的设备编写的。本文档中使用的所有设备最初均采用原始（默认）配置。如果您使用的是真实网络，请确保您已经了解所有命令的潜在影响。

SpeechView操作

1. Unity Connection通过智能主机将语音邮件消息发送到Nuance。此消息包括管理员定义的返回SMTP地址，Nuance用于回复。
2. Nuance会转录该消息并将转录发送到Microsoft Office 365。

- Microsoft Office 365接收响应消息，并通过智能主机将其转发到st-service@<unity connection domain>的电子邮件地址。Unity Connection希望所有SpeechView转录都发送到Cisco Unity Connection SMTP域的别名“st-service”，在本例中为“st-service@<unity connection domain>”。
- 当Unity Connection收到响应时，它会相应地处理该响应。如果它是对注册请求的响应，则完成注册；或者如果是转录，则接收该转录并将其发送到为接收语音邮件的用户定义的任何通知设备。



配置

步骤1. Unity Connection配置

有关Unity Connection配置，请参阅<https://www.cisco.com/c/en/us/support/docs/voice-unified-communications/speechview/116126-config-speechview-00.html#anc7>。

步骤2. Microsoft Office 365配置

- 以管理员用户身份登录Microsoft Office 365。点击所有管理中心。
- 打开Exchange管理中心并单击邮件流。
- 导航至“连接器”选项卡，并配置新的连接器到Unity Connection。
 - 单击+符号以添加连接器，如图所示。



STATUS	NAME	FROM	TO
On	STTConnector	Office 365	Partner organization
On	SMTP Relay	Your organization's email server	Office 365
On	Connector	Office 365	Partner organization
On	CUC Send Connector	Office 365	Your organization's email server

3.2. 输入连接器的连接详细信息。

New Connector — Mozilla Firefox

https://outlook.office365.com/ecp/Connectors/ConnectorSelection.aspx?Ac

Select your mail flow scenario

Specify your mail flow scenario, and we'll let you know if you need to set up a connector. [Learn more](#)

From:

To:

Creating a connector is optional for this mail flow scenario. Create a connector only if you want to enhance security for the email messages sent between Office 365 and your partner organization or service provider. You can create multiple connectors for this scenario, each applying to different partner organizations or service providers. [Learn more about enhancing email security](#)

Office 365: Your cloud email subscription.

Your organization's email server: This is an email server that you manage. It's often called an on-premises server.

Partner organization: A partner can be an organization you do business with, such as a bank. It can also be a cloud email service provider that provides services such as archiving, anti-spam, and so on.

Internet: For inbound email, this refers to email that's sent from the Internet to Office 365 (not to your email server or partner organization). For outbound email, it refers

Next Cancel

3.3. 单击“下一步”并输入名称。

New Connector — Mozilla Firefox

https://outlook.office365.com/ecp/Connectors/OutboundConnector.aspx?c

New connector

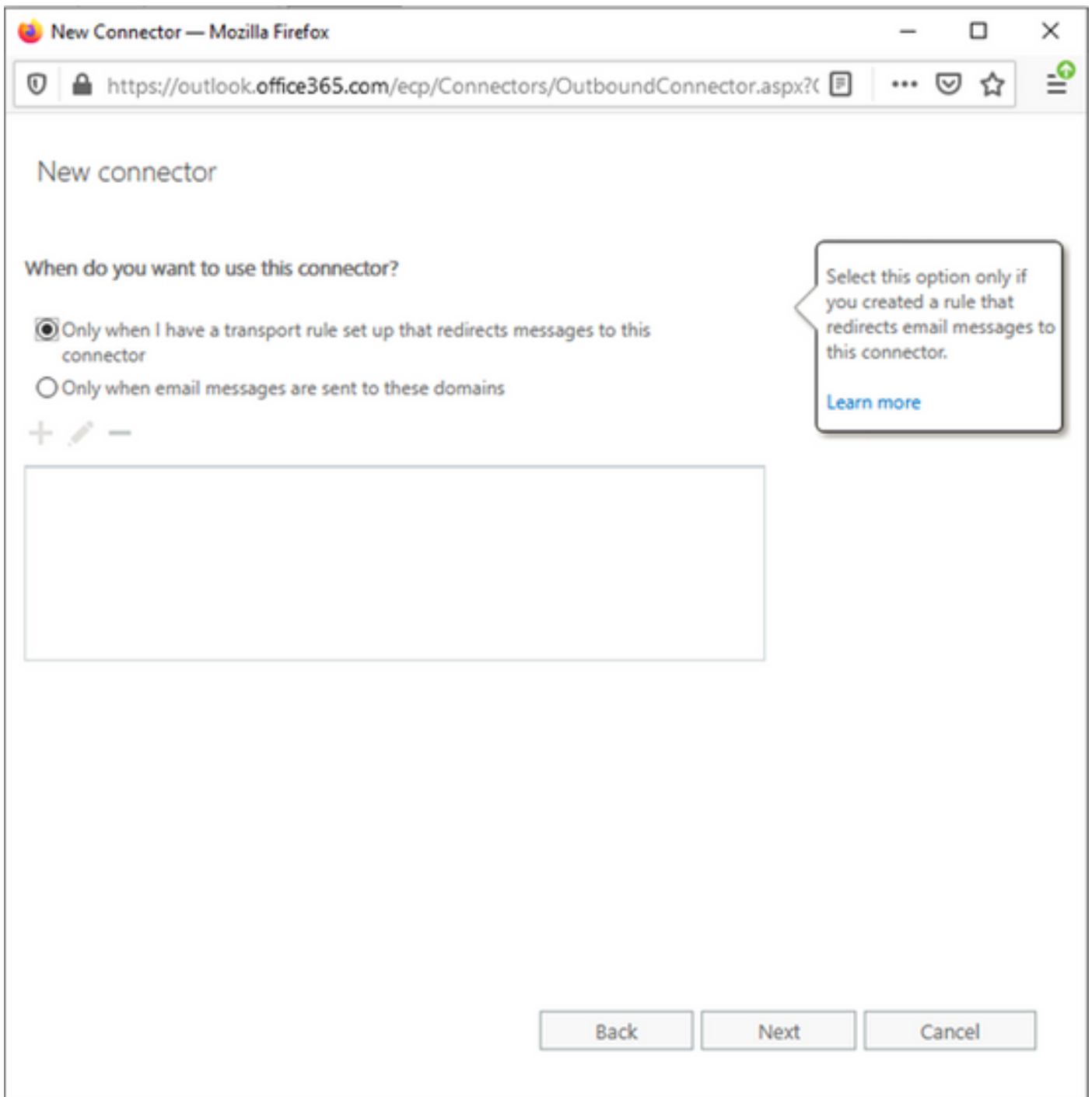
This connector enforces routing and security restrictions for email messages sent from Office 365 to your partner organization or service provider.

*Name:

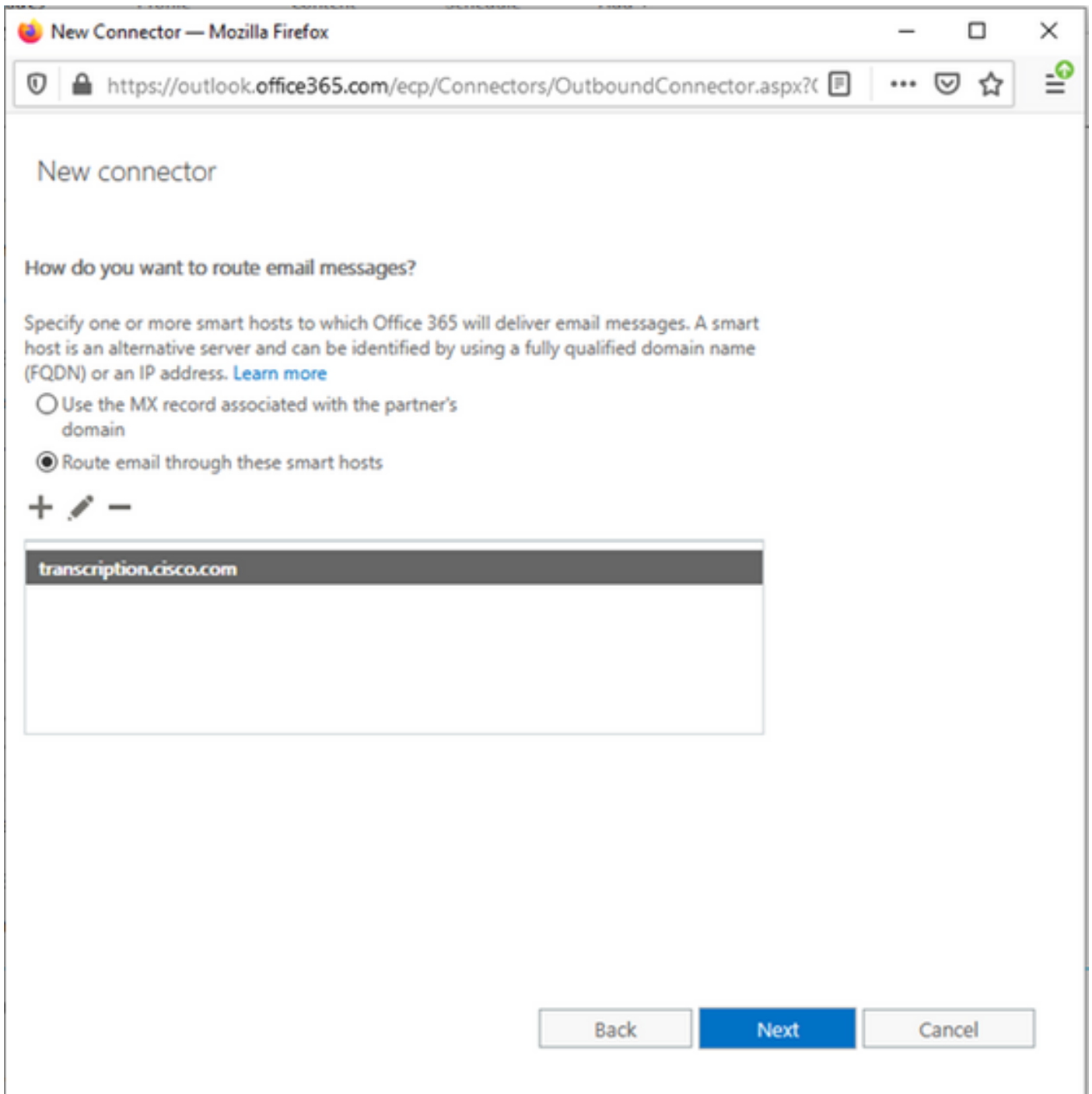
Description:

What do you want to do after connector is saved?
 Turn it on

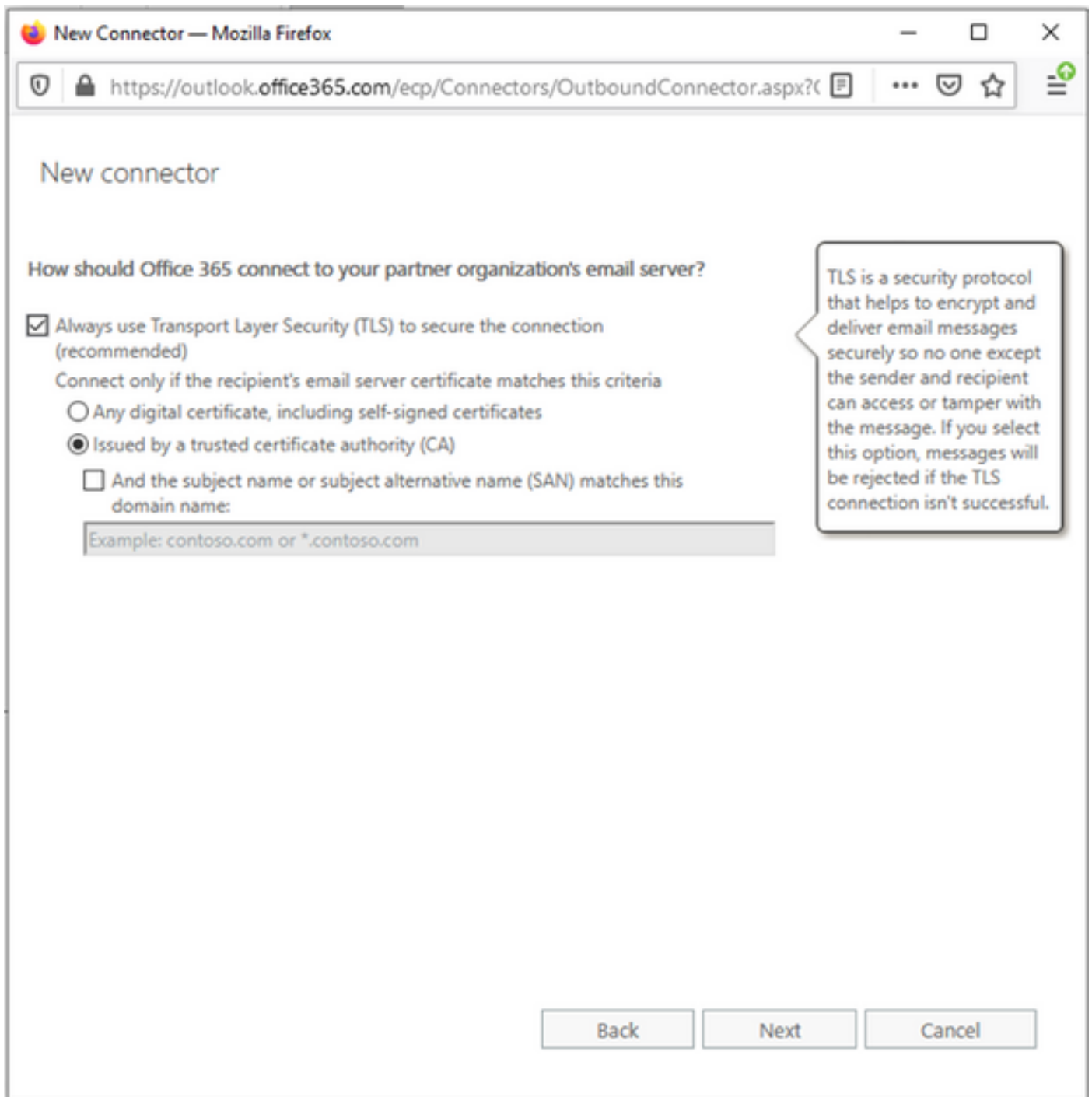
3.4.连接器将与传输规则一起使用。选择第一个选项，如下所示。



3.5.单击“下一步”并选择“路由模式”。由于智能主机用于与Microsoft Office 365服务器通信到Unity Connection，请选择第二个选项“通过这些智能主机路由电子邮件”。使用+选项添加智能主机的详细信息。

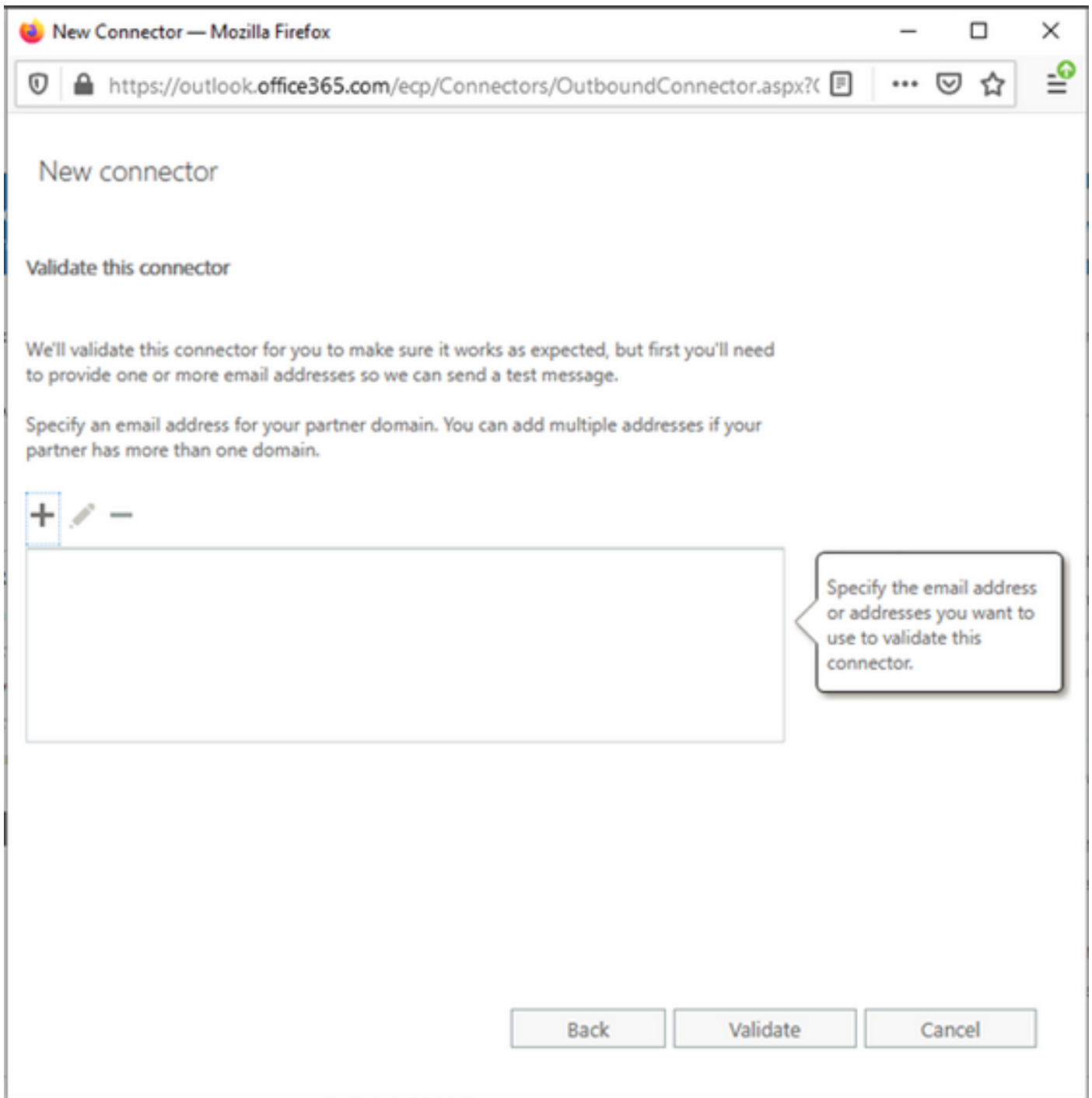


3.6. 输入所需的安全限制。



3.7. 确认设置并单击“下一步”。

3.8. 指定电子邮件地址，以防您验证电子邮件地址。



4. 定位至“规则”标签。创建一个规则。

new rule

Name:
Smart Host Rule

*Apply this rule if...
The recipient is... 'oAuth2@ciscomessagingalpha.onmicrosoft.com'
add condition

*Do the following...
X Redirect the message to... 'stt-service@cuc105.ucdemolab.com'
and
X Use the following connector... Unity Connection Connector
add action

Except if...
add exception

Properties of this rule:
 Audit this rule with severity level:
Not specified

Choose a mode for this rule:
 Enforce
 Test with Policy Tips
 Test without Policy Tips

Activate this rule on the following date:
Fri 3/5/2021 11:00 AM

Deactivate this rule on the following date:
Fri 3/5/2021 11:00 AM

Save Cancel

规则描述了当邮件到达“oAuth2@ciscomessagingalpha.onmicrosoft.com”邮箱时，使用“Unity Connection Connector”将邮件重定向到“st-service@<unity connection domain>”的场景。

验证

当前没有可用于此配置的验证过程。

故障排除

目前没有针对此配置的故障排除信息。