

在无线接入点上配置SSID到VLAN的映射

目标

虚拟局域网(VLAN)是按功能、区域或应用进行逻辑分段的交换网络，不考虑用户的物理位置。VLAN是一组主机或端口，它们可以位于网络的任意位置，但通信方式与位于同一物理网段相同。VLAN允许您将设备移动到新的VLAN而不更改任何物理连接，从而帮助简化网络管理。

中继端口和交换机端口之间的标记VLAN包含以太网帧中的VLAN信息。无标记VLAN发送没有VLAN标记的流量。VLAN标记将信息插入以太网帧中，以标识哪个帧属于哪个VLAN。中继端口是处理多个VLAN的端口。

服务集标识符(SSID)是无线客户端可以连接到无线网络中的所有设备或在其中共享的唯一标识符。它区分大小写，并且不能超过32个字母数字字符。

SSID广播功能允许在网络上广播SSID。此功能默认启用，使无线设备可发现网络。

本文提供有关如何在无线接入点上配置SSID到VLAN映射的说明。

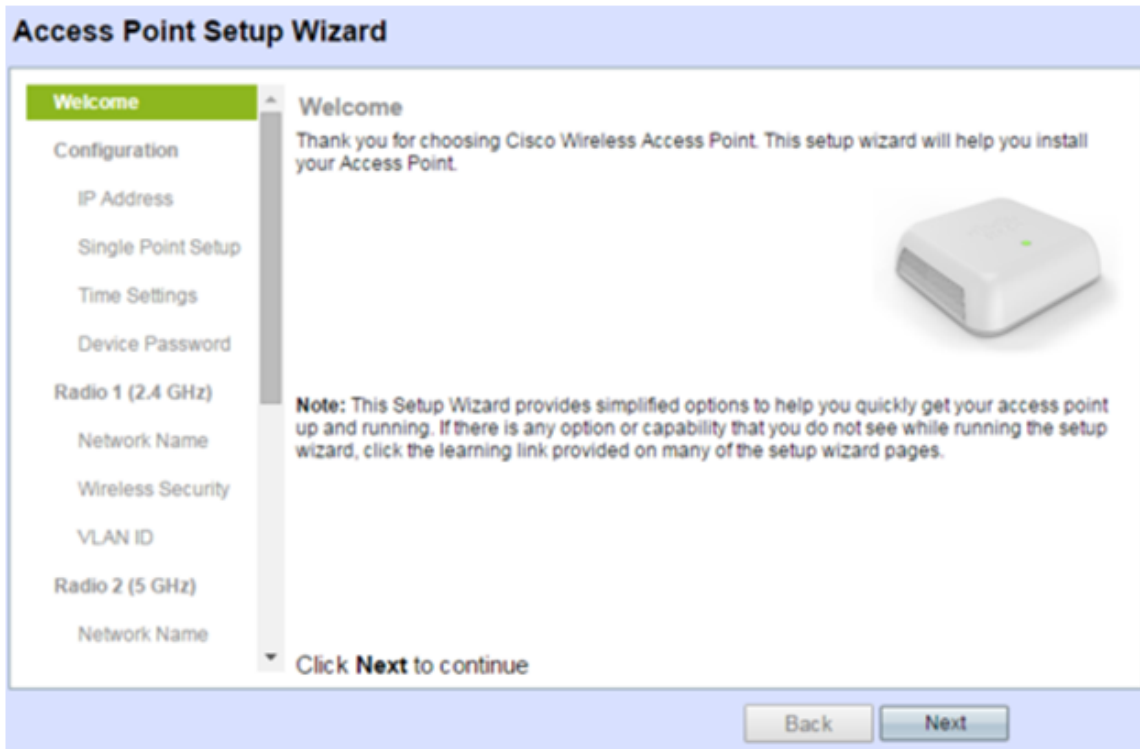
适用设备 | 固件版本

- WAP121 | 1.0.6.5(下载[最新版本](#))
- WAP131 | 1.0.2.8(下载[最新版本](#))
- WAP150 | 1.0.1.7(下载[最新版本](#))
- WAP321 | 1.0.6.5(下载[最新版本](#))
- WAP351 | 1.0.2.8(下载[最新版本](#))
- WAP361 | 1.0.1.7(下载[最新版本](#))
- WAP371 | 1.3.0.3(下载[最新版本](#))
- WAP551 | 1.2.1.3(下载[最新版本](#))
- WAP561 | 1.2.1.3(下载[最新版本](#))
- WAP571 | 1.0.0.17(下载[最新版本](#))
- WAP571E | 1.0.0.17(下载[最新版本](#))

配置SSID到VLAN的映射

使用安装向导

步骤1.从接入点基于Web的实用程序的主控制面板运行设置向导。



步骤2.提供安装向导所需的配置详细信息。

步骤3.在Network Name(SSID)字段中，在2.4 GHz网络的Configure Radio 1屏幕下，输入您的首选SSID。默认值为ciscosb_2.4GHz。单击 **Next**。

Configure Radio 1 - Name Your Wireless Network

The name of your wireless network, known as an SSID, identifies your network so that wireless devices can find it.

Enter a name for your wireless network:

Network Name (SSID):
For example: MyNetwork

[? Learn more about network names](#)

Click **Next** to continue

Back

Next

步骤4.选择无线网络的安全类型。

注意：在本例中，选择最佳安全（WPA2个人 — AES）。

Configure Radio 1 - Secure Your Wireless Network

Select your network security strength.

Best Security (WPA2 Personal - AES)

Recommended for new wireless computers and devices that support this option.
Older wireless devices might not support this option.

Better Security (WPA/WPA2 Personal - TKIP/AES)

Recommended for older wireless computers and devices that might not support WPA2.

No Security (Not recommended)

Enter a security key with 8-63 characters.

.....|



Below Minimum

Show Key as Clear Text

[? Learn more about your network security options](#)

Click **Next** to continue

Back

Next

步骤5.输入长度为8-63个字符的安全密钥或密码。单击“下一步”继续。

Configure Radio 1 - Secure Your Wireless Network

Select your network security strength.

- Best Security (WPA2 Personal - AES)
Recommended for new wireless computers and devices that support this option.
Older wireless devices might not support this option.
- Better Security (WPA/WPA2 Personal - TKIP/AES)
Recommended for older wireless computers and devices that might not support WPA2.
- No Security (Not recommended)

Enter a security key with 8-63 characters.

.....|



Below Minimum

Show Key as Clear Text

[? Learn more about your network security options](#)

Click **Next** to continue

Back

Next

步骤6.在VLAN ID字段中，输入无线网络的VLAN ID，然后单击“下一步”。

注意：在本例中，10用作VLAN ID。

Configure Radio 1 - Assign The VLAN ID For Your Wireless Network

By default, the VLAN ID assigned to the management interface for your access point is 1, which is also the default untagged VLAN ID. If the management VLAN ID is the same as the VLAN ID assigned to your wireless network, then the wireless clients associated with this specific wireless network can administer this device. If needed, an access control list (ACL) can be created to disable administration from wireless clients.

Enter a VLAN ID for your wireless network:

VLAN ID: (Range: 1 - 4094)

[? Learn more about vlan ids](#)

Click **Next** to continue

Back

Next

步骤7.在5 GHz网络的Configure Radio 2页中，在Network Name(SSID)字段中输入您的首选SSID，然后单击**Next**。默认值为ciscosb_5GHz。

注意：此步骤仅适用于具有双射频的WAP。

Configure Radio 2 - Name Your Wireless Network

The name of your wireless network, known as an SSID, identifies your network so that wireless devices can find it.

Enter a name for your wireless network:

Network Name (SSID): For example: MyNetwork

[? Learn more about network names](#)

Click **Next** to continue

Back

Next

步骤8.选择无线网络的安全类型。

注意：在本例中，选择最佳安全（WPA2个人—AES）。

Configure Radio 2 - Secure Your Wireless Network

Select your network security strength.

Best Security (WPA2 Personal - AES)

Recommended for new wireless computers and devices that support this option.
Older wireless devices might not support this option.

Better Security (WPA/WPA2 Personal - TKIP/AES)

Recommended for older wireless computers and devices that might not support WPA2.

No Security (Not recommended)

Enter a security key with 8-63 characters.

Below Minimum

Show Key as Clear Text

[? Learn more about your network security options](#)

Click **Next** to continue

Back

Next

步骤9.输入长度为8-63个字符的安全密钥或密码。单击“下一步”继续。

Configure Radio 2 - Secure Your Wireless Network

Select your network security strength.

Best Security (WPA2 Personal - AES)

Recommended for new wireless computers and devices that support this option.
Older wireless devices might not support this option.

Better Security (WPA/WPA2 Personal - TKIP/AES)

Recommended for older wireless computers and devices that might not support WPA2.

No Security (Not recommended)

Enter a security key with 8-63 characters.

Below Minimum

Show Key as Clear Text

步骤10.输入VLAN ID，然后单击“下一步”。

注意：在本例中，20用作VLAN ID。

Configure Radio 2 - Assign The VLAN ID For Your Wireless Network

By default, the VLAN ID assigned to the management interface for your access point is 1, which is also the default untagged VLAN ID. If the management VLAN ID is the same as the VLAN ID assigned to your wireless network, then the wireless clients associated with this specific wireless network can administer this device. If needed, an access control list (ACL) can be created to disable administration from wireless clients.

Enter a VLAN ID for your wireless network:

VLAN ID: (Range: 1 - 4094)

[? Learn more about vlan ids](#)

Click **Next** to continue

Back

Next

步骤11.单击“下一步”跳过强制网络门户配置。

Enable Captive Portal - Create Your Guest Network

Use Captive Portal to set up a guest network, which means that wireless users need to be authenticated before they can access the Internet. For example, a hotel can create a guest network to redirect new wireless users to a page for authentication.

Do you want to create your guest network now?

- Yes
- No, thanks.

[? Learn more about captive portal guest networks](#)

Click **Next** to continue

Back

Next

步骤12.检查并确认设置，然后单击“提交”。

Summary - Confirm Your Settings

Please review the following settings and ensure the data is correct.

Radio 1 (2.4 GHz)

| | |
|------------------------|---------------------|
| Network Name (SSID): | ciscosb_2.4GHz |
| Network Security Type: | WPA2 Personal - AES |
| Security Key: | ***** |
| VLAN ID: | 10 |

Radio 2 (5 GHz)


| | |
|------------------------|---------------------|
| Network Name (SSID): | ciscosb_5GHz |
| Network Security Type: | WPA2 Personal - AES |
| Security Key: | ***** |
| VLAN ID: | 20 |

Click **Submit** to enable settings on your Cisco Wireless Access Point

步骤13. 出现“Device Setup Complete (设备设置完成)”屏幕后，单击“Finish (完成)”。

注意：您将从基于Web的实用程序页面注销。

Device Setup Complete

 Congratulations, your access point has been set up successfully. We strongly recommend that you save these settings by writing them down or by copying and pasting them into a text document. You will need these settings later when you add other wireless computers or devices to your network.

Cluster Name: Cisco001

Radio 1 (2.4 GHz)

Network Name (SSID): ciscosb_2.4GHz

Network Security Type: WPA2 Personal - AES

Security Key: password123

Radio 2 (5 GHz)

Network Name (SSID): ciscosb_5GHz

Network Security Type: WPA2 Personal - AES

Security Key: *****



Click **Finish** to close this wizard.

Back

Finish

您现在已成功将SSID映射到接入点上的VLAN。