

使用 modem dialout controller 命令配置 T1 或 E1 接口用于向外模拟呼叫

目录

[简介](#)

[开始使用前](#)

[规则](#)

[先决条件](#)

[使用的组件](#)

[概述](#)

[配置](#)

[网络图](#)

[配置](#)

[验证](#)

[故障排除](#)

[故障排除命令](#)

[调试输出示例](#)

[相关信息](#)

简介

此配置示例说明如何使用 modem dialout controller 命令配置 T1 或 E1 接口以进行传出模拟呼叫

开始使用前

规则

有关文档规则的详细信息，请参阅 [Cisco 技术提示规则](#)。

先决条件

本文档没有任何特定的前提条件。

使用的组件

本文档中的信息基于以下软件和硬件版本。

- 思科 IOS® 软件版本 12.1(5)T
- Cisco AS5300，带两个 E1 PRI

注意： Cisco IOS 软件版本 12.1(T) 中引入了 modem dialout controller 命令。我们建议使用 Cisco

IOS软件版本12.1(3)T或更高版本来实施此实施。调制解调器**拨出控制器**命令支持从IOS软件版本12.1(5)T开始的多个接口。例如：

```
AS5300-3(config)#line 1 60
AS5300-3(config-line)#modem dialout controller t1 ?
<0-7> List of controllers to dial out

AS5300-3(config-line)#modem dialout controller t1 0,1,3
```

本文档中的信息都是基于特定实验室环境中的设备创建的。本文档中使用的所有设备最初均采用原始（默认）配置。如果您是在真实网络上操作，请确保您在使用任何命令前已经了解其潜在影响。

概述

当您希望传出模拟呼叫使用特定T1/E1线路时，请使用**modem dialout controller**命令。此命令在线路配置模式下配置，因此调制解调器将绑定到指定的T1/E1接口，以用于任何出站模拟呼叫。然后，您可以在与调制解调器对应的异步（或异步组）接口上配置必要的按需拨号路由(DDR)命令。

在此示例配置中，Cisco AS5300网络接入服务器(NAS)有两个主速率接口(PRI)，每个接口映射到不同的拨号号码识别服务(DNIS)。如果客户端拨打8210，则电信公司将呼叫切换到E1 0，并将8211的呼叫切换到E1 1。此配置还使用调制解调器池根据电话公司交换机在呼叫建立期间传送的被叫号码(DNIS)消息来分配调制解调器。这样，特定号码的呼叫仅由作为特定调制解调器池成员的调制解调器“应答”。由于每个T1/E1也绑定到特定被叫号码，因此我们已将一组调制解调器与特定T1/E1进行有效关联，以用于传入呼叫。

为演示拨出方案，客户端向接入服务器请求回叫。回叫在接入服务器上本地配置，但回叫属性也可以从RADIUS/TACACS+身份验证、授权和记帐(AAA)服务器获取。对于某个特定号码的来电，该呼叫会切换到适当的T1，并由调制解调器池成员应答。协商回叫后，接入服务器断开呼叫，并在同一调制解调器上启动回叫。然后，使用调制解调器拨出控制器命令中指定的T1或E1接口进行拨出。在本例中，拨出配置为与来电位于同一T1/E1上。

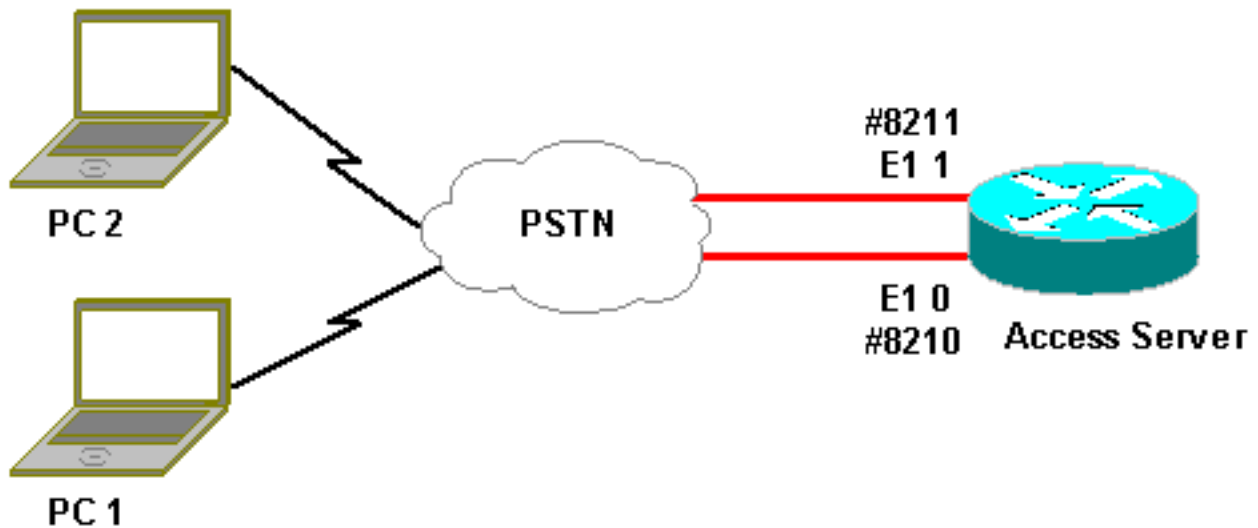
配置

本部分提供有关如何配置本文档所述功能的信息。

注意：要查找有关本文档中使用的命令的其他信息，请使用[IOS命令查找工具](#)(仅限注册客户)。

网络图

本文档使用下图所示的网络设置。



配置

本文档使用如下所示的配置。

访问服务器配置

```
Current configuration:

!
version 12.1
service timestamps debug datetime msec
service timestamps log uptime msec
no service password-encryption
!
hostname lala
!
logging rate-limit console 10 except errors
!
username testuser callback-dialstring 6036 password 0
test
!-- Access server calls back testuser at phone number
6036 !-- The callback parameters can also be configured
on a RADIUS/TACACS+ server. ! spe 1/0 1/9 firmware
location system:/ucode/mica_port_firmware spe 2/0 2/23
firmware location system:/ucode/microcom_firmware !
resource-pool disable ! modem-pool ModemPool8210 !--
Modem pool for calls to a specific phone number pool-
range 1-40 !-- The range of the modems in the pool !--
Modems 1 through 40 are included in this pool called-
number 8210 max-conn 40 !-- Specifies the DNIS to be
used for this modem pool !-- Incoming calls for phone
number 8210 are assigned to this pool ! modem-pool
ModemPool8211 pool-range 41-60,61-84 !-- The range of
the modems in the pool !-- Modems 41 through 84 are
included in this pool called-number 8211 max-conn 44 !--
Incoming calls for phone number 8211 are assigned to
this pool ! ip subnet-zero no ip finger ! isdn switch-
type primary-net5 chat-script mod ABORT ERROR ABORT BUSY
"" "AT" OK "ATDT \T" TIMEOUT 30 CONNECT \c !-- Chat
script for dialout ! controller E1 0 !-- DNIS number for
this E1 is 8210 clock source line primary pri-group
timeslots 1-31 ! controller E1 1 !-- DNIS number for
```

```
this E1 is 8211 clock source line secondary 1 pri-group
timeslots 1-31 ! controller E1 2 ! controller E1 3 ! !
interface Ethernet0 ip address 10.200.20.22
255.255.255.0 ! interface Serial0:15 !-- D-channel for
E1 0 !-- DNIS number for this PRI is 8210 description
PRI 8210 no ip address encapsulation ppp isdn switch-
type primary-net5 isdn incoming-voice modem !-- All
incoming voice calls on this E1 are sent to the modems !
interface Serial1:15 !-- D-channel for E1 1 !-- DNIS
number for this PRI is 8211 description PRI 8211 no ip
address encapsulation ppp isdn switch-type primary-net5
isdn incoming-voice modem !-- All incoming voice calls
on this E1 are sent to the modems ! interface Group-
Async1 ip unnumbered Ethernet0 encapsulation ppp async
mode interactive peer default ip address pool dialup !--
Assign IP address for incoming calls (with DNIS 8210)
from pool dialup ppp callback accept !-- Permit PPP
Callback ppp authentication chap group-range 1 40 !--
Interface includes modems 1 through 40 that are also in
ModemPool8210 ! interface Group-Async2 ip unnumbered
Ethernet0 encapsulation ppp async mode interactive peer
default ip address pool dialup2 !-- Assign IP address
for incoming calls (with DNIS 8211) from pool dialup2
ppp callback accept !-- Here we accept the callback ppp
authentication chap group-range 41 84 !-- Interface
includes modems 41 through 84 that are also in
ModemPool8211 ! ip local pool dialup 192.168.100.1
192.168.100.15 ip local pool dialup2 192.168.200.32
192.168.200.126 !-- Define the IP address ranges for the
2 pools ip classless no ip http server ! line con 0
exec-timeout 0 0 transport input none line 1 40 !-- Line
configuration for modems 1-40 !-- These modems are in
pool ModemPool8210 autoselect during-login autoselect
ppp script callback mod !-- Invoke chat script mod for
the callback login local modem InOut !-- Set the modems
for dialin and dialout modem dialout controller e1 0 !--
Outgoing call on these modems use e1 0 line 41 84 !--
Line configuration for modems 41-84 !-- These modems are
in pool ModemPool8210 autoselect during-login autoselect
ppp script callback mod !-- Invoke chat script mod for
the callback login local modem InOut modem dialout
controller e1 1 !-- Outgoing call on these modems use e1
1 line aux 0 line vty 0 4 ! end
```

验证

当前没有可用于此配置的验证过程。

故障排除

本部分提供的信息可用于对配置进行故障排除。

故障排除命令

[命令输出解释程序工具 \(仅限注册用户 \) 支持某些 show 命令](#)，使用此工具可以查看对 show 命令输出的分析。

注意：在发出debug命令之前，请参阅[有关Debug命令的重要信息](#)。

- **debug isdn q931** - 显示(第3层)路由器和ISDN交换机之间的ISDN网络连接的呼叫建立和拆卸。
- **debug ppp negotiation** — 显示有关点对点协议(PPP)流量和交换的信息，同时协商PPP组件，包括链路控制协议(LCP)、身份验证和网络控制协议(NCP)。成功的PPP协商首先打开LCP状态，然后进行身份验证，最后协商NCP（通常是IP控制协议 — IPCP）。
- **debug ppp authentication** -显示PPP认证协议消息，包括质询验证协议(CHAP)信息包交换和密码认证协议(PAP)交换。
- **debug chat** — 在启动异步/普通旧电话服务(POTS)拨号时监控聊天脚本的执行。聊天脚本是一组期望发送字符串对，定义数据终端设备(DTE)和数据通信设备(DCE)设备之间的握手。
- **debug callback** — 当路由器使用调制解调器和聊天脚本在终端线路上回叫时，显示回叫事件。
- **debug dialer** — 显示有关拨号程序接口上收到的数据包包的调试信息。
- **debug modem csm** (此处未显示) — 显示用于连接调制解调器上呼叫的呼叫状态机上的调试信息。显示内部调制解调器管理进程如何处理调制解调器呼叫。

调试输出示例

以下是使用上面所示的**debug**命令获取的输出。

输出显示了客户端呼叫8210。然后，呼叫被切换到E1 0，并由调制解调器14（异步14）接听，调制解调器14是池ModemPool8210的成员。呼叫连接、PPP（和回叫）协商、客户端经过身份验证，AS5300为回叫准备断开呼叫。然后，路由器使用同一调制解调器（异步14）启动回叫。根据**modem dialout controller**命令，呼叫使用E1 0并执行拨出。

注意：为方便打印，已包装一些较长的调试行。不带时间戳开头的行来自上一行的结尾。

```
*Jan 1 05:00:43.018: ISDN Se0:15: RX <- SETUP pd = 8 callref = 0x266A
!-- Incoming Call on E1 0
*Jan 1 05:00:43.018:          Sending Complete
*Jan 1 05:00:43.018:          Bearer Capability i = 0x9090A3
*Jan 1 05:00:43.018:          Channel ID i = 0xA18398
*Jan 1 05:00:43.022:          Progress Ind i = 0x8183
- Origination address is non-ISDN
*Jan 1 05:00:43.022:          Calling Party Number i = 0xA1, '6036',Plan:ISDN,
Type:National
*Jan 1 05:00:43.022:          Called Party Number i = 0x81, '210', Plan:ISDN,
Type:Unknown
!-- The called number (DNIS) for the incoming call is (8)210 *Jan 1 05:00:43.022: Locking Shift
to Codeset 6 *Jan 1 05:00:43.022: Codeset 6 IE 0x28 i = 'Analog', 0x20, '36' *Jan 1
05:00:43.026: ISDN Se0:15: TX -> CALL_PROC pd = 8 callref =0xA66A *Jan 1 05:00:43.026: Channel
ID i = 0xA98398 *Jan 1 05:00:43.030: ISDN Se0:15: TX -> ALERTING pd = 8 callref = 0xA66A *Jan 1
05:00:43.082: ISDN Se0:15: TX -> CONNECT pd = 8 callref = 0xA66A *Jan 1 05:00:43.146: ISDN
Se0:15: RX <- CONNECT_ACK pd = 8 callref =0x266A *Jan 1 05:00:43.146: ISDN Se0:15:
CALL_PROGRESS: CALL_CONNECTED call id0x63, bchan 23, dsl 0 *Jan 1 05:00:45: %ISDN-6-CONNECT:
Interface Serial0:23 is now
connected to 6036
!-- Call is connected *Jan 1 05:01:11.158: As14 LCP: I CONFREQ [Closed] id 1 len 50 !-- PPP
negotiation begins. Note that the call is on !-- Async 14, which is a member of the pool
ModemPool8210 *Jan 1 05:01:11.158: As14 LCP: ACCM 0x00000000 (0x020600000000) *Jan 1
05:01:11.158: As14 LCP: MagicNumber 0x75D617D5 (0x050675D617D5) *Jan 1 05:01:11.158: As14 LCP:
PFC (0x0702) *Jan 1 05:01:11.158: As14 LCP: ACFC (0x0802) *Jan 1 05:01:11.158: As14 LCP:
Callback 6 (0x0D0306) *Jan 1 05:01:11.158: As14 LCP: MRRU 1614 (0x1104064E) *Jan 1 05:01:11.158:
As14 LCP: EndpointDisc 1 Local *Jan 1 05:01:11.158: As14 LCP:
(0x13170177DE54DA55A24ADD8043063898) *Jan 1 05:01:11.158: As14 LCP: (0x1C049700000000) *Jan 1
05:01:11.158: As14 LCP: Lower layer not up, Fast Starting *Jan 1 05:01:11.158: As14 PPP:
Treating connection as a dedicated line *Jan 1 05:01:11.158: As14 PPP: Phase is ESTABLISHING,
Active Open [0 sess,1 load] *Jan 1 05:01:11.158: As14 LCP: O CONFREQ [Closed] id 1 len 25 *Jan 1
```

05:01:11.158: As14 LCP: ACCM 0x000A0000 (0x0206000A0000) *Jan 1 05:01:11.158: As14 LCP: AuthProto CHAP (0x0305C22305) *Jan 1 05:01:11.158: As14 LCP: MagicNumber 0x118F14E6 (0x0506118F14E6) *Jan 1 05:01:11.158: As14 LCP: PFC (0x0702) *Jan 1 05:01:11.158: As14 LCP: ACFC (0x0802) *Jan 1 05:01:11.158: As14 LCP: O CONFREQ [REQsent] id 1 len 31 *Jan 1 05:01:11.158: As14 LCP: MRRU 1614 (0x1104064E) *Jan 1 05:01:11.158: As14 LCP: EndpointDisc 1 Local *Jan 1 05:01:11.158: As14 LCP: (0x13170177DE54DA55A24ADD8043063898) *Jan 1 05:01:11.162: As14 LCP: (0x1C049700000000) *Jan 1 05:01:13: %LINK-3-UPDOWN: **Interface Async14, changed state to up**
!-- Interface Async 14 is up *Jan 1 05:01:11.302: As14 LCP: I CONFACK [REQsent] id 1 len 25 *Jan 1 05:01:11.302: As14 LCP: ACCM 0x000A0000 (0x0206000A0000) *Jan 1 05:01:11.302: As14 LCP: AuthProto CHAP (0x0305C22305) *Jan 1 05:01:11.302: As14 LCP: MagicNumber 0x118F14E6 (0x0506118F14E6) *Jan 1 05:01:11.302: As14 LCP: PFC (0x0702) *Jan 1 05:01:11.302: As14 LCP: ACFC (0x0802) *Jan 1 05:01:11.302: As14 LCP: I CONFREQ [ACKrcvd] id 2 len 23 *Jan 1 05:01:11.302: As14 LCP: ACCM 0x00000000 (0x020600000000) *Jan 1 05:01:11.302: As14 LCP: MagicNumber 0x75D617D5 (0x050675D617D5) *Jan 1 05:01:11.302: As14 LCP: PFC (0x0702) *Jan 1 05:01:11.302: As14 LCP: ACFC (0x0802) *Jan 1 05:01:11.302: **As14 LCP: Callback 6 (0x0D0306)**
*Jan 1 05:01:11.302: As14 LCP: O CONFACK [ACKrcvd] id 2 len 23
*Jan 1 05:01:11.302: As14 LCP: ACCM 0x00000000 (0x020600000000)
*Jan 1 05:01:11.302: As14 LCP: MagicNumber 0x75D617D5 (0x050675D617D5)
*Jan 1 05:01:11.302: As14 LCP: PFC (0x0702)
*Jan 1 05:01:11.302: As14 LCP: ACFC (0x0802)
*Jan 1 05:01:11.302: **As14 LCP: Callback 6 (0x0D0306)**
!-- Callback is negotiated *Jan 1 05:01:11.302: As14 LCP: State is Open *Jan 1 05:01:11.302: As14 PPP: Phase is AUTHENTICATING, by this end [0 sess, 1 load] *Jan 1 05:01:11.302: As14 CHAP: O CHALLENGE id 1 len 25 from "lala" *Jan 1 05:01:11.446: As14 LCP: I IDENTIFY [Open] id 3 len 18 magic 0x75D617D5 MSRASV5.00 *Jan 1 05:01:11.462: As14 LCP: I IDENTIFY [Open] id 4 len 28 magic 0x75D617D5 MSRAS-1-TESTPC-W2K *Jan 1 05:01:11.462: As14 CHAP: I RESPONSE id 1 len 29 from "testuser" *Jan 1 05:01:11.462: As14 **CHAP: O SUCCESS** id 1 len 4
!-- CHAP authentication is successful *Jan 1 05:01:11.462: As14 MCB: **User testuser Callback Number - Server 6036**
!-- Number to be used for callback, configured locally in the username !-- command. The callback information can be off loaded to an AAA server. *Jan 1 05:01:11.462: Async14 PPP: O MCB Request(1) id 1 len 7 *Jan 1 05:01:11.462: Async14 MCB: O 1 1 0 7 3 3 0 *Jan 1 05:01:11.462: As14 MCB: O Request Id 1 Callback Type Server-Num delay 0 *Jan 1 05:01:11.462: As14 PPP: Phase is CBCP [0 sess, 1 load] *Jan 1 05:01:11.606: Async14 PPP: I MCB Response(2) id 1 len 7 *Jan 1 05:01:11.606: Async14 MCB: I 2 1 0 7 3 3 C *Jan 1 05:01:11.606: As14 MCB: Received response *Jan 1 05:01:11.606: As14 MCB: Response CBK-Server-Num 3 3 12 *Jan 1 05:01:11.606: Async14 PPP: O MCB Ack(3) id 2 len 7 *Jan 1 05:01:11.606: Async14 MCB: O 3 2 0 7 3 3 C *Jan 1 05:01:11.606: As14 MCB: O Ack Id 2 Callback Type Server-Num delay 12 *Jan 1 05:01:11.606: As14 MCB: Negotiated MCB with peer *Jan 1 05:01:11.734: As14 LCP: I TERMREQ [Open] id 5 len 16 (0x75D617D5003CCD7400000000) *Jan 1 05:01:11.734: As14 LCP: O TERMACK [Open] id 5 len 4 *Jan 1 05:01:11.734: As14 MCB: Peer terminating the link *Jan 1 05:01:11.734: As14 MCB: Link terminated by peer, Callback Needed *Jan 1 05:01:11.734: As14 MCB: Initiate Callback for testuser at 6036 using Async *Jan 1 05:01:11.734: As14 MCB: Async-callback in progress *Jan 1 05:01:11.734: As14 PPP: Phase is TERMINATING [0 sess, 1 load] *Jan 1 05:01:11.734: TTY14 Callback PPP process creation *Jan 1 05:01:11.734: TTY14: Callback script exists - no script creation necessary *Jan 1 05:01:11.734: TTY14 Callback process initiated, user: testuser dialstring 6036 *Jan 1 05:01:14: %ISDN-6-DISCONNECT: Interface Serial0:23 **disconnected** from 6036, call lasted 29 seconds
!-- Call is disconnected *Jan 1 05:01:12.386: ISDN Se0:15: TX -> DISCONNECT pd = 8 callref = 0xA66A *Jan 1 05:01:12.386: Cause i = 0x809F - Normal, unspecified *Jan 1 05:01:12.450: ISDN Se0:15: RX <- RELEASE pd = 8 callref = 0x266A *Jan 1 05:01:12.450: ISDN Se0:15: TX -> RELEASE_COMP pd = 8 callref = 0xA66A *Jan 1 05:01:13.734: As14 LCP: TIMEOUT: State TERMsent *Jan 1 05:01:13.734: As14 LCP: State is Closed *Jan 1 05:01:13.734: As14 PPP: Phase is DOWN [0 sess, 1 load] *Jan 1 05:01:13.734: As14 PPP: Phase is ESTABLISHING, Passive Open [0 sess, 1 load] *Jan 1 05:01:13.734: As14 LCP: State is Listen *Jan 1 05:01:16: %LINK-5-CHANGED: Interface Async14, changed state to reset *Jan 1 05:01:14.734: As14 LCP: State is Closed *Jan 1 05:01:14.734: As14 PPP: Phase is DOWN [0 sess, 1 load] *Jan 1 05:01:17.734: As14 IPCP: Remove route to 192.168.100.13 *Jan 1 05:01:17.734: TTY14 Callback forced wait = 4 seconds *Jan 1 05:01:21: %LINK-3-UPDOWN: Interface Async14, changed state to down *Jan 1 05:01:19.734: As14 LCP: State is Closed *Jan 1 05:01:21.766: CHAT14: Matched chat script mod to string mod *Jan 1 05:01:21.766: CHAT14: Asserting DTR *Jan 1 05:01:21.766: CHAT14: **Chat script mod started**
!-- Callback chatscript mod is started *Jan 1 05:01:21.766: CHAT14: Sending string: ATZ *Jan 1 05:01:21.766: CHAT14: Expecting string: OK *Jan 1 05:01:21.814: CHAT14: Completed match for expect: OK *Jan 1 05:01:21.814: CHAT14: Sending string: ATDT \T<6036> *!-- Dial 6036 per the*

callback configuration *Jan 1 05:01:21.814: CHAT14: Expecting string: CONNECT *Jan 1 05:01:21.902: ISDN Se0:15: TX -> SETUP pd = 8 callref = 0x0008
!-- The outgoing call uses E1 0 as per the modem dialout controller !-- command for modem 14.
*Jan 1 05:01:21.902: Bearer Capability i = 0x8090A3 *Jan 1 05:01:21.902: Channel ID i = 0xA9839F
*Jan 1 05:01:21.902: Progress Ind i = 0x8183 - Origination address is non-ISDN *Jan 1 05:01:21.902: Calling Party Number i = 0x80, '6036', Plan:Unknown, Type:Unknown *Jan 1 05:01:21.902: Called Party Number i = 0x80, '6036', Plan:Unknown, Type:Unknown *Jan 1 05:01:21.946: ISDN Se0:15: RX <- CALL_PROC pd = 8 callref = 0x8008 *Jan 1 05:01:21.946: Channel ID i = 0xA9839F *Jan 1 05:01:21.974: ISDN Se0:15: RX <- ALERTING pd = 8 callref = 0x8008 *Jan 1 05:01:28.958: ISDN Se0:15: RX <- CONNECT pd = 8 callref = 0x8008 *Jan 1 05:01:28.962: Progress Ind i = 0x8182 - Destination address is non-ISDN *Jan 1 05:01:28.962: Connected Number i = 0xA136303336 *Jan 1 05:01:28.962: Locking Shift to Codeset 6 *Jan 1 05:01:28.962: Codeset 6 IE 0x28 i = 'Analog', 0x20, '36' *Jan 1 05:01:31: %ISDN-6-CONNECT: Interface Serial0:30 is now connected to 6036 *Jan 1 05:01:28.966: ISDN Se0:15: TX -> CONNECT_ACK pd = 8 callref = 0x0008
*Jan 1 05:01:41.562: CHAT14: Completed match for expect: CONNECT *Jan 1 05:01:41.566: CHAT14: Sending string: \c *Jan 1 05:01:41.566: CHAT14: Chat script mod finished, status = Success *Jan 1 05:01:41.598: TTY14: Callback starting PPP directly with Invalid auth info *Jan 1 05:01:41.642: As14 LCP: I CONFREQ [Closed] id 0 len 47
!-- PPP negotiation begins *Jan 1 05:01:41.646: As14 LCP: ACCM 0x00000000 (0x020600000000) *Jan 1 05:01:41.646: As14 LCP: MagicNumber 0x143F35CB (0x0506143F35CB) *Jan 1 05:01:41.646: As14 LCP: PFC (0x0702) *Jan 1 05:01:41.646: As14 LCP: ACFC (0x0802) *Jan 1 05:01:41.646: As14 LCP: MRRU 1614 (0x1104064E) *Jan 1 05:01:41.646: As14 LCP: EndpointDisc 1 Local *Jan 1 05:01:41.646: As14 LCP: (0x13170177DE54DA55A24ADD8043063898) *Jan 1 05:01:41.646: As14 LCP: (0x1C049700000000) *Jan 1 05:01:41.646: As14 LCP: Lower layer not up, Fast Starting *Jan 1 05:01:41.646: As14 PPP: Treating connection as a callout *Jan 1 05:01:41.646: As14 PPP: Phase is ESTABLISHING, Active Open [0 sess, 1 load] *Jan 1 05:01:41.646: As14 LCP: O CONFREQ [Closed] id 2 len 25 *Jan 1 05:01:41.646: As14 LCP: ACCM 0x000A0000 (0x0206000A0000) *Jan 1 05:01:41.646: As14 LCP: AuthProto CHAP (0x0305C22305) *Jan 1 05:01:41.646: As14 LCP: MagicNumber 0x118F8C01 (0x0506118F8C01) *Jan 1 05:01:41.646: As14 LCP: PFC (0x0702) *Jan 1 05:01:41.646: As14 LCP: ACFC (0x0802) *Jan 1 05:01:41.646: As14 LCP: O CONFREQ [REQsent] id 0 len 31 *Jan 1 05:01:41.646: As14 LCP: MRRU 1614 (0x1104064E) *Jan 1 05:01:41.646: As14 LCP: EndpointDisc 1 Local *Jan 1 05:01:41.646: As14 LCP: (0x13170177DE54DA55A24ADD8043063898) *Jan 1 05:01:41.646: As14 LCP: (0x1C049700000000) *Jan 1 05:01:43: %LINK-3-UPDOWN: Interface Async14, changed state to up *Jan 1 05:01:41.810: As14 LCP: I CONFACK [REQsent] id 2 len 25 *Jan 1 05:01:41.810: As14 LCP: ACCM 0x000A0000 (0x0206000A0000) *Jan 1 05:01:41.810: As14 LCP: AuthProto CHAP (0x0305C22305) *Jan 1 05:01:41.810: As14 LCP: MagicNumber 0x118F8C01 (0x0506118F8C01) *Jan 1 05:01:41.810: As14 LCP: PFC (0x0702) *Jan 1 05:01:41.810: As14 LCP: ACFC (0x0802) *Jan 1 05:01:41.842: As14 LCP: I CONFREQ [ACKrcvd] id 1 len 20 *Jan 1 05:01:41.842: As14 LCP: ACCM 0x00000000 (0x020600000000) *Jan 1 05:01:41.842: As14 LCP: MagicNumber 0x143F35CB (0x0506143F35CB) *Jan 1 05:01:41.842: As14 LCP: PFC (0x0702) *Jan 1 05:01:41.842: As14 LCP: ACFC (0x0802) *Jan 1 05:01:41.842: As14 LCP: O CONFACK [ACKrcvd] id 1 len 20 *Jan 1 05:01:41.842: As14 LCP: ACCM 0x00000000 (0x020600000000) *Jan 1 05:01:41.842: As14 LCP: MagicNumber 0x143F35CB (0x0506143F35CB) *Jan 1 05:01:41.842: As14 LCP: PFC (0x0702) *Jan 1 05:01:41.842: As14 LCP: ACFC (0x0802) *Jan 1 05:01:41.842: As14 LCP: State is Open *Jan 1 05:01:41.842: As14 PPP: Phase is AUTHENTICATING, by this end [0 sess, 1 load] *Jan 1 05:01:41.842: As14 CHAP: O CHALLENGE id 2 len 25 from "lala" *Jan 1 05:01:42.002: As14 LCP: I IDENTIFY [Open] id 2 len 18 magic 0x143F35CB MSRASV5.00 *Jan 1 05:01:42.018: As14 LCP: I IDENTIFY [Open] id 3 len 28 magic 0x143F35CB MSRAS-1-TESTPC-W2K *Jan 1 05:01:42.034: As14 CHAP: I RESPONSE id 2 len 29 from "testuser" *Jan 1 05:01:42.034: As14 CHAP: O SUCCESS id 2 len 4
!-- PPP negotiation is successful *Jan 1 05:01:42.034: As14 PPP: Phase is UP [0 sess, 1 load] *Jan 1 05:01:42.034: As14 IPCP: O CONFREQ [Closed] id 1 len 10
!-- IPCP parameters are now negotiated *Jan 1 05:01:42.034: As14 IPCP: Address 10.200.20.22 (0x03060AC81416) *Jan 1 05:01:42.194: As14 CCP: I CONFREQ [Not negotiated] id 4 len 10 *Jan 1 05:01:42.194: As14 CCP: MS-PPC supported bits 0x00000001 (0x120600000001) *Jan 1 05:01:42.194: As14 LCP: O PROTREQ [Open] id 3 len 16 protocol CCP (0x80FD0104000A120600000001) *Jan 1 05:01:42.210: As14 IPCP: I CONFREQ [REQsent] id 5 len 40 *Jan 1 05:01:42.210: As14 IPCP: CompressType VJ 15 slots CompressSlotID (0x0206002D0F01) *Jan 1 05:01:42.210: As14 IPCP: Address 0.0.0.0 (0x030600000000) *Jan 1 05:01:42.210: As14 IPCP: PrimaryDNS 0.0.0.0 (0x810600000000) *Jan 1 05:01:42.210: As14 IPCP: PrimaryWINS 0.0.0.0 (0x820600000000) *Jan 1 05:01:42.210: As14 IPCP: SecondaryDNS 0.0.0.0 (0x830600000000) *Jan 1 05:01:42.210: As14 IPCP: SecondaryWINS 0.0.0.0 (0x840600000000) *Jan 1 05:01:42.210: As14 IPCP: O CONFREQ [REQsent] id 5 len 34 *Jan 1 05:01:42.210: As14 IPCP: CompressType VJ 15 slots CompressSlotID (0x0206002D0F01) *Jan 1 05:01:42.210: As14 IPCP: PrimaryDNS 0.0.0.0 (0x810600000000) *Jan 1 05:01:42.210: As14 IPCP: PrimaryWINS 0.0.0.0 (0x820600000000) *Jan 1 05:01:42.210: As14 IPCP: SecondaryDNS 0.0.0.0

```
(0x830600000000) *Jan 1 05:01:42.210: As14 IPCP: SecondaryWINS 0.0.0.0 (0x840600000000) *Jan 1 05:01:42.214: As14 IPCP: I CONFACK [REQsent] id 1 len 10 *Jan 1 05:01:42.214: As14 IPCP: Address 10.200.20.22 (0x03060AC81416) *Jan 1 05:01:42.386: As14 IPCP: I CONFREQ [ACKrcvd] id 6 len 10 *Jan 1 05:01:42.386: As14 IPCP: Address 0.0.0.0 (0x030600000000) *Jan 1 05:01:42.386: As14 IPCP: O CONFNAK [ACKrcvd] id 6 len 10 *Jan 1 05:01:42.386: As14 IPCP: Address 192.168.100.13 (0x0306C0A8640D) *Jan 1 05:01:42.546: As14 IPCP: I CONFREQ [ACKrcvd] id 7 len 10 *Jan 1 05:01:42.546: As14 IPCP: Address 192.168.100.13 (0x0306C0A8640D) *Jan 1 05:01:42.546: As14 IPCP: O CONFACK [ACKrcvd] id 7 len 10 *Jan 1 05:01:42.546: As14 IPCP: Address 192.168.100.13 (0x0306C0A8640D) *Jan 1 05:01:42.546: As14 IPCP: State is Open *Jan 1 05:01:42.550: As14 IPCP: Install route to 192.168.100.13 *Jan 1 05:01:45: %LINEPROTO-5-UPDOWN: Line protocol on Interface Async14, changed state to up !-- Callback connection is up, PPP negotiation is complete !-- and a route is installed.
```

相关信息

- [接入服务器与PC之间的Async-PPP回叫](#)
- [ISDN上的PPP回叫](#)
- [DNIS 的调制解调器汇集](#)
- [使用 PRI 线路实现 DNIS 与调制解调器池](#)
- [技术支持 - Cisco Systems](#)