

Configuratie van E1 R2-signalering en probleemoplossing

Inhoud

[Inleiding](#)

[Voorwaarden](#)

[Vereisten](#)

[Gebruikte componenten](#)

[Conventies](#)

[Configureren](#)

[AS5300: Cisco IOS - VFC-softwarerelease \(Voice functiekaart\)](#)

[E1 R2 configureren](#)

[Netwerkdigram](#)

[Configuraties](#)

[Verifiëren](#)

[Problemen oplossen](#)

[Probleemoplossing E1 R2-fouten](#)

[Opdrachten met debug en show](#)

[Voorbeeld van output van foutopsporing](#)

[Gerelateerde informatie](#)

[Inleiding](#)

Dit document biedt de progressieve commando items aan die nodig zijn om E1 R2 signalering uit te voeren. Dit document bevat ook informatie over probleemoplossing met opdrachten voor **debug**.

N.B.: Voordat u dit document gebruikt, wordt u aangeraden om eerst de [E1 R2-signaleringstheorie](#) te lezen.

[Voorwaarden](#)

[Vereisten](#)

Zorg er voordat u deze configuratie probeert voor dat u aan deze voorwaarden voldoet:

- R2-signalering is alleen van toepassing op E1.
- R2-signalering wordt niet ondersteund op de Cisco MC3810 router.
- Om R2-signalering op Cisco 2600/3600 Series routers uit te voeren, is deze hardware vereist: VWIC-1MFT-E1 of VWIC-2MFT-E1 of VWIC-2MFT-E1-DI samen met een van deze spraakdichtheidsmodules: [NM-HDV](#) (Spraak-netwerkmodule met hoge dichtheid) of NM-HD-

2VE (spraak/fax-netwerkmodule voor IP-communicatie met 2 sleuven).

- Definieer de opdracht **ds0-group** (of **CAS-groep**, gebaseerd op de Cisco IOS® versie) op de E1 controllers (AS5x00, Cisco 2600/3600 routers).
- Gebruik de opdracht **Zoals aangepast** om de E1 R2-varianten voor verschillende landen of regio's aan te passen.

Gebruikte componenten

De informatie in dit document is gebaseerd op deze software en hardwareversie:

- Cisco AS5300 met Cisco IOS-softwareversie 12.0.7T

Opmerking: E1 R2-signalering is toegevoegd aan de Cisco 2600/3600 Series routers in Cisco IOS-softwareversies 12.1.2XH en 12.1(3)T.

De informatie in dit document is gebaseerd op de apparaten in een specifieke laboratoriumomgeving. Alle apparaten die in dit document worden beschreven, hadden een opgeschoonde (standaard)configuratie. Als uw netwerk live is, moet u de potentiële impact van elke opdracht begrijpen.

Conventies

Raadpleeg [Cisco Technical Tips Conventions](#) (Conventies voor technische tips van Cisco) voor meer informatie over documentconventies.

Configureren

In dit gedeelte wordt de informatie gegeven die u kunt gebruiken om E1 R2 te configureren.

N.B.: Raadpleeg het [Opdrachtplanningsgereedschap](#) (alleen [geregistreerde](#) klanten) om meer informatie te vinden over de opdrachten die dit document gebruikt.

AS5300: Cisco IOS - VFC-softwareversie (Voice functiekaart)

Voordat u E1 R2-signalering in een Cisco AS5300-router uitvoert, moet u ervoor zorgen dat uw versie van Cisco IOS-software in de E1-module compatibel is met Cisco VCware. Om de Cisco IOS-softwarecompatibiliteit te controleren, raadpleegt u de [Cisco VCWare Compatibiliteitsmatrix voor Cisco AS5300](#). Als de versies niet compatibel zijn, laden de DSP-modules (digitale signaalprocessor) in de spraakkaart niet en worden spraaksignaalverwerking niet uitgevoerd.

Meestal, als de versie van Cisco VCW niet compatibel is met de Cisco IOS-software, kunt u de opdracht `Sleuf_number` invoeren om dit zoals in dit voorbeeld te zien.

```
eefje#show vfc 1 interface
Rx: in ptr 18, outptr 0
Tx: in ptr 14 outptr 14
0 in hw queue, 0 queue head , 0 queue tail
Hardware is VFC out-of-band channel
Interface : state RESET DSP instance (0x61048284)
dsp_number 0, Channel ID 0
TX outstanding 0, max TX outstanding 0
```

```
Received 18 packets, 1087 bytes, 0 giant packets
0 drops, 0 no buffers, 0 input errors
121 bytes output, 14 frames output
0 bounce errors 0
```

```
DSP module 1 is not installed
DSP module 2 is not installed
DSP module 3 is not installed
DSP module 4 is not installed
DSP module 5 is not installed
```

In de eerste voorbeeldoutput van de **show vfc sleuf_number interface** opdracht, is het DSP module nummer niet geïnstalleerd statements die laten zien dat de versies niet compatibel zijn voor dat modulenummer.

Deze tweede set van uitvoer is een voorbeeld van de DSP-modules die de juiste versie van Cisco VCW hebben geladen:

```
eefje#show vfc 1 interface
Rx: in ptr 24, outptr 0
TX: in ptr 15 outptr 15
0 in hw queue, 0 queue head , 0 queue tail
Hardware is VFC out-of-band channel
Interface : state RESET DSP instance (0x618C6088)
dsp_number 0, Channel ID 0
TX outstanding 0, max TX outstanding 0
Received 283288 packets, 15864278 bytes, 0 giant packets
0 drops, 0 no buffers, 0 input errors
1416459 bytes output, 141647 frames output
0 bounce errors 0
```

```
Slot 1, DSPM 1 (C542), DSP 1, Channel 1
State RESET, DSP instance (0x61914BDC)
TX outstanding 0, max TX outstanding 8
Received 0 packets, 0 bytes, 0 giant packets
0 drops, 0 no buffers, 0 input errors
0 bytes output, 0 frames output
0 bounce errors 0
```

```
Slot 1, DSPM 1 (C542), DSP 2, Channel 1
State RESET, DSP instance (0x6191510C)
TX outstanding 0, max TX outstanding 8
Received 0 packets, 0 bytes, 0 giant packets
0 drops, 0 no buffers, 0 input errors
0 bytes output, 0 frames output
0 bounce errors 0
```

Om de geïnstalleerde versie van Cisco VCWare te controleren, voert u de opdracht **show vfc sleuf_number versie vcware in**, zoals in dit voorbeeld wordt getoond:

```
eefje#show vfc 1 version vcware
Voice Feature Card in Slot 1:
```

```
VCware Version : 4.10
ROM Monitor Version : 1.2
DSPware Version :
Technology : C542
```

Opmerking: Zorg ervoor dat de technologie-versie van Cisco VCWare (c549 of c542) overeenkomt met de geïnstalleerde VFC DSP-technologie (DSPM-542: Ondersteuning van één dichtheid voor DSPM-549: spraakondersteuning met hoge dichtheid).

E1 R2 configureren

Volg deze stappen om E1 R2 te configureren:

1. Stel de controller E1 in dat wordt aangesloten op de particuliere automatische kanaalbeurs (PBX) of switch. Zorg ervoor dat de opstelling en linecodering van de E1 goed zijn ingesteld.
2. Kies voor E1-opmaak **CRC** of **niet-CRC**.
3. Kies voor E1-linecodering **HDB3** of **AMI**.
4. Kies voor de E1 klokbron **interne** of **regel**. Houd in gedachten dat verschillende PBX's verschillende vereisten hebben op de klokbron.
5. [Regelsignalering instellen](#).
6. [Instellen interregister signalering](#)
7. Pas de configuratie aan met de **aangepaste** opdracht.

Lijnsignalering configureren

Gebruik deze opdrachtreeks om de regel te definiëren voor signalering.

```
eefje(config)#controller E1 0
eefje(config-controller)#ds0-group 1 timeslots 1-15 type ?
...
r2-analog          R2 ITU Q411
r2-digital         R2 ITU Q421
r2-pulse           R2 ITU Supplement 7
...
```

Dit is de opdrachtvolgorde voor Cisco IOS-software release 11.3.

```
eefje(config)#controller E1 0
eefje(config-controller)#cas-group 1 timeslot 1-15 type ?
...
```

N.B.: Als u uw upgrade van Cisco IOS-software release 11.3 naar 12.0 uitvoert, wordt de nieuwe opdracht automatisch vervangen door de oude.

Interregister-signalering configureren

Dit voorbeeld van de bevelvolgorde illustreert hoe te om de verschillende types van interregister signalering te vormen:

```
eefje(config)#controller E1 0
eefje(config-controller)#ds0-group 1 timeslots 1-15 type r2-digital ?
dtmf                DTMF tone signaling
r2-compelled        R2 Compelled Register Signaling
r2-non-compelled    R2 Non Compelled Register Signaling
r2-semi-compelled   R2 Semi Compelled Register Signaling
```

De implementatie van Cisco van R2 signalering heeft DNIS-ondersteuning (Dienmaal Number Identification Service) ingeschakeld. Als u de optie Automatic Number Identification (ANI) toestaat, wordt de verzameling van DNIS-informatie nog uitgevoerd. Specificatie van de ANI optie schakelt DNIS-verzameling niet uit. DNIS is het nummer dat wordt opgeroepen. ANI is het nummer van de beller. Als u bijvoorbeeld een router vormt die A wordt genoemd om een router die B wordt genoemd te bellen, dan wordt het DNIS-nummer toegewezen aan router B en wordt het ANI-

nummer toegewezen aan router A. ANI is gelijk aan caller ID.

[E1 R2-aanpassing met de aangepaste opdracht](#)

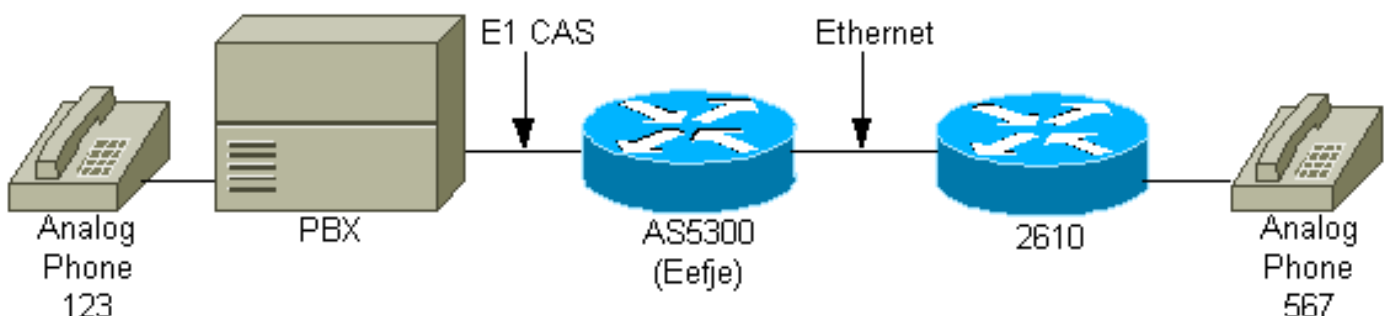
De subopdrachten onder de opdrachtregel **cas-CUBE** worden gebruikt om de landenvarianten aan te passen. Ze worden ook gebruikt om kanaal-gekoppelde signalering (CAS) parameters aan te passen. Deze opdrachtvolgorde illustreert hoe u alle opties op **aangepaste** opdracht kunt weergeven.

```
eefje(config)#controller E1 0
eefje(config-controller)#cas-custom 1
eefje(config-ctrl-cas)#?
CAS custom commands:
  ani-digits           Expected number of ANI digits
  ani-timeout          Timeout for ANI digits
  answer-guard-time    Wait Between Group-B Answer Signal And Line Answer
  answer-signal        Answer signal to be used
  caller-digits        Digits to be collected before requesting CallerID
  category             Category signal
  country              Country Name
  debounce-time        Debounce Timer
  default              Set a command to its defaults
  dnis-complete        Send I-15 after DNIS digits for dial-out
  dnis-digits          Expected number of DNIS digits
  exit                 Exit from cas custom mode
  groupa-callerid-end  Send Group-A Caller ID End
  invert-abcd          invert the ABCD bits before TX and after rx
  ka                   kA Signal
  kd                   KD Signal
  metering             R2 network is sending metering signal
  nc-congestion        Non Compelled Congestion signal
  no                   Negate a command or set its defaults
  proceed-to-send      Suppress proceed-to-send signal for pulsed line signaling
  release-ack          Send Release Acknowledgment to Clear Forward
  release-guard-time   Release Guard Timer
  request-category     DNIS Digits to be collected before requesting category
  seizure-ack-time     Seizure to Acknowledge timer
  unused-abcd          Unused ABCD bit values
```

Raadpleeg voor meer informatie over de **aangepaste** opdrachtparameters de [E1 R2-aanpassing met de cas-aangepaste opdracht](#).

[Netwerkdigram](#)

Dit document maakt gebruik van deze netwerkinstellingen.



[Configuraties](#)

Voor de toepassing van dit document zijn dit de drie verschillende R2-configuraties die over de E1-interface worden weergegeven:

- [R2 digitaal niet verplicht](#)
- [R2 digitaal semihard](#)
- [R2 digitale gecompriemde ANI](#)

De configuraties zijn gewijzigd zodat alleen de informatie wordt weergegeven die in dit document wordt besproken.

Eefje ingesteld voor R2 Digital Non-Compated

```
hostname eefje
!
controller E1 0
  clock source line primary
  ds0-group 1 timeslots 1-15 type r2-digital r2-non-
  compelled
  cas-custom 1
  !--- For more information on these commands !--- refer
  to ds0-group and cas-custom.
!
voice-port 0:1
  cptone BE
  !--- The cptone command is country specific. For more !-
  -- information on this command, refer to cptone .
!
dial-peer voice 123 pots
  destination-pattern 123
  direct-inward-dial
  port 0:1
  prefix 123
!
dial-peer voice 567 voip
  destination-pattern 567
  session target ipv4:2.0.0.2
!
```

Eefje ingesteld voor R2 Digital Semi-Compilatie

```
hostname eefje
!
controller E1 0
  clock source line primary
  ds0-group 1 timeslots 1-15 type r2-digital r2-semi-
  compelled
  cas-custom 1
  !--- For more information on these commands !--- refer
  to ds0-group and cas-custom .
!
voice-port 0:1
  cptone BE
  !--- The cptone command is country specific. For more !-
  -- information on this command, refer to cptone .
!
dial-peer voice 123 pots
  destination-pattern 123
  direct-inward-dial
```

```
port 0:1
prefix 123
!
dial-peer voice 567 voip
destination-pattern 567
session target ipv4:2.0.0.2
!
```

Eefje ingesteld voor R2 Digital Compated ANI

```
hostname eefje
! controller E1 0 clock source line primary ds0-group
1 timeslots 1-15 type r2-digital r2-compelled ani cas-
custom 1
!--- For more information on these commands !--- refer
to ds0-group and cas-custom .

voice-port 0:1 cptone BE
!--- The cptone command is country specific. For more !-
-- information on this command, refer to cptone .

dial-peer voice 123 pots destination-pattern 123 direct-
inward-dial port
0:1 prefix 123
!
dial-peer voice 567 voip destination-pattern 567 session
target ipv4:2.0.0.2
!
```

Verifiëren

Er is momenteel geen verificatieprocedure beschikbaar voor deze configuratie.

Problemen oplossen

Deze sectie bevat informatie waarmee u problemen met de configuratie kunt oplossen.

Probleemoplossing E1 R2-fouten

Dit is de informatie over de probleemoplossing die voor deze configuratie relevant is. Volg deze instructies om uw configuratie problemen op te lossen.

1. Controleer of controller E1 0 is gestegen. Als het is uitgevallen, controleer het vormen, lijncodering, klokbron, alarmen, vervang de kabel, herhaal de kaart, enzovoort. Gebruik het [E1 R2-document dat u aanpast met het document van de Zoals-aangepaste Opdracht](#) als referentie.
2. Als u een AS5300 gebruikt, controleer of de DSP's correct geïnstalleerd zijn met de opdracht **VFC-sleufnummer**.
3. Configureer de Direct Inward Dial (DID) op de standaard oude telefoonservice (POTS) peer, zodat de ontvangen cijfers worden gebruikt om een uitgaande peer te kiezen.
4. Specificeer op de [spraak-poorten](#) (onderwerp is specifiek voor uw land). Een **land opdracht** moet zodanig zijn geconfigureerd dat deze overeenkomt met de **op het land aangepaste opdracht**. De parameter `cptone` stelt de 'call progress tones' voor een bepaald land vast en, nog belangrijker, stelt de codering in op een wet of uto, die afhankelijk is van het land. De

standaardcodering voor de VS is UW-law.

5. Aanpassen en registreren van de signaleringsbepalingen aan de configuratie van de switch.
6. Schakel een aantal in het document weergegeven **apparaten** in en bestudeer de uitvoer.
7. Controleer voor communicatie tussen de router en PBX of switch: Is de lijn in beslag genomen? Ontvang/verstuur de router cijfers? Zoek uit welke kant de oproep opruimt. Gebruik indien mogelijk de nieuwste Cisco IOS-software-releases die beschikbaar zijn op Cisco.com.

Opdrachten met debug en show

Bepaalde opdrachten met **show** worden ondersteund door de tool [Output Interpreter \(alleen voor geregistreerde klanten\)](#). Hiermee kunt u een analyse van de output van opdrachten met **show** genereren.

Opmerking: Voordat u **debug**-opdrachten afgeeft, raadpleegt u de [belangrijke informatie over debug-opdrachten](#).

Opmerking: gebruik deze **debugs** voor Cisco IOS-software-release 12.0:

- **debug cas** - voor lijnsignalering.
- **debug csm voice** - Voor interregister signalering.
- **debug vtsp all** - zodat de uitvoer van alle berichten (cijfers) tussen de PBX-indeling en de router verloopt.

Gebruik deze opdrachten voor Cisco IOS-software-release IOS 11.3:

- **modemgarantie csm debug-rbs** - Voor lijnsignalering (U moet eerst **service intern** in configuratie mode specificeren.)
- **debug csm voice** - Voor interregister signalering.
- **debug vtsp all** - zodat de uitvoer van alle berichten (cijfers) tussen de PBX-indeling en de router verloopt.

Gebruik deze uitwerpselen voor de AS5400- en AS5350-platforms:

- **debug signaal r2** - Voor interregister signalering
- **debug vtsp all** - zodat de uitvoer van alle berichten (cijfers) tussen de PBX-indeling en de router verloopt.

Voorbeeld van output van foutopsporing

Aangezien er drie verschillende configuraties eerder in dit document worden weergegeven, zijn er drie verschillende **versies**:

R2 Digitaal niet verplicht: Inkomend gesprek aan 567

Raadpleeg het gedeelte [E1 R2-signalering](#) om dit **debug** uitvoer beter te begrijpen.

```
eefje#show debug
```

```
CAS:
```

```
Channel Associated Signaling debugging is on
```

```
CSM Voice:
```

```
Voice Call Switching Module debugging is on
```


Voice Telephony session debugging is on
Voice Telephony dsp debugging is on
Voice Telephony error debugging is on
eefje#
eefje#
eefje#
Jan 6 10:41:28.677: from NEAT(0): (0/0): **Rx SEIZURE** (ABCD=0001)
Jan 6 10:41:28.717: VDEV_ALLOCATE: failed to allocate a device
Jan 6 10:41:28.717: VDEV_ALLOCATE: 1/28 is allocated
Jan 6 10:41:28.721: csm_vtsp_init_tdm (voice_vdev=0x620BF874)
Jan 6 10:41:28.721: csm_vtsp_init_tdm: dsprm_tdm_allocate: tdm slot 2,
dspm 1, dsp 5, dsp_channel 1
Jan 6 10:41:28.721: csm_vtsp_init_tdm: dsprm_tdm_allocate: tdm stream 5,
channel 3, bank 1, bp_channel 4, BP_stream 255
Jan 6 10:41:28.721: CSM_RX_CAS_EVENT_FROM_NEAT:(cid0018): EVENT_CALL_DIAL_IN
at slot 2 and port 16
Jan 6 10:41:28.721: CSM_PROC_IDLE: CSM_EVENT_START_DIGIT_COLLECT at slot 2,
port 16
Jan 6 10:41:28.721: csm_vtsp_start_digit_collect (voice_vdev=0x620BF874)
Jan 6 10:41:28.721: Enter csm_connect_pri_vdev function
Jan 6 10:41:28.721: csm_connect_pri_vdev:tdm_allocate_BP_ts()call. BP TS allocated
at BP_stream0, BP_Ch28,vdev_common 0x6 20BF8E4
Jan 6 10:41:28.721: to NEAT:(cid0018) EVENT_CHANNEL_LOCK for slot0 ctrl0 chan0
Jan 6 10:41:28.721: vtsp_do_call_setup_ind
Jan 6 10:41:28.721: vtsp_do_call_setup_ind: Call ID=65681, guid=61FAF610
Jan 6 10:41:28.721: vtsp_do_call_setup_ind: type=0, under_spec=0, name=, id0=0,
id1=0, id2=0, calling=, called=
Jan 6 10:41:28.721: vtsp_do_call_setup_ind: redirect DN = reason =
0vtsp_open_voice_and_set_params
Jan 6 10:41:28.721: dsp_close_voice_channel: [0:1:0] packet_len=8 channel_id
=8529 packet_id=75
Jan 6 10:41:28.721: dsp_open_voice_channel_20: [0:1:0] packet_Len=16 channel_id
=8529 packet_id=74 alaw_ulaw_select=1 associated_signaling_channel=0 time_slot=0
serial_port=0
Jan 6 10:41:28.721: dsp_encap_config_20: [0:1:0] packet_Len=24 channel_id=8529
packet_id=92 TransportProtocol 2 t_src=0x0 r_src=0x0 t_vpxcc=0x0 r_vpxcc=0x0
Jan 6 10:41:28.721: dsp_set_payout: [0:1:0] packet_Len=18 channel_id=8529
packet_id=76 mode=1 initial=60 min=4 max=200 fax_nom=300
Jan 6 10:41:28.721: dsp_echo_canceller_control: [0:1:0] packet_Len=10
channel_id=8529 packet_id=66 flags=0x0
Jan 6 10:41:28.721: dsp_set_gains: [0:1:0] packet_Len=12 channel_id=8529
packet_id=91 in_gain=0 out_gain=0
Jan 6 10:41:28.721: dsp_vad_enable: [0:1:0] packet_Len=10 channel_id=8529
packet_id=78 thresh=-38
Jan 6 10:41:28.721: dsp_voice_mode: [0:1:0] packet_Len=24 channel_id=8529
packet_id=73 coding_type=1 voice_field_size=80 V AD_flag=0 echo_length=64
comfort_noise=1 inband_detect=1 digit_relay=2
AGC_flag=0vtsp_do_r2_start_digit(): dsp_dtmf_mode()
dsp_dtmf_mode(VTSP_TONE_R2_MF_FORWARD_MODE)
Jan 6 10:41:28.725: dsp_dtmf_mode: [0:1:0] packet_Len=10 channel_id=8529
packet_id=65 dtmf_or_mf=1vtsp_do_r2_start_digit():fsm_push(vtsp_r2_state_table)
Jan 6 10:41:28.725: csm_vtsp_call_setup_resp (vdev_info=0x620BF874,
vtsp_cdb=0x621C5F3C)
Jan 6 10:41:28.725: csm_vtsp_call_setup_resp:vdev_common BP TS allocatedat
BP_stream0,BP_Ch28
Jan 6 10:41:28.725: csm_vtsp_call_setup_resp:dst_tdm_chnl call. BP TS allocatedat
stream 5, chan 3,BP_stream 255, BP_ch 4
Jan 6 10:41:28.725: csm_vtsp_call_setup_resp:DST_tdm_chnl call. BP TS allocatedat
stream 5, chan 3,BP_stream 0, BP_ch 28
Jan 6 10:41:28.725: CSM_PROC_IC1_COLLECT_ADDR_INFO: CSM_EVENT_MODEM_OFFHOOK
(DNIS=, ANI=) at slot 2, port 16
Jan 6 10:41:28.725: R2 Incoming Voice(2/16): DSX (E1 0:0): STATE: R2_IN_IDLE R2
Got Event R2_START
Jan 6 10:41:28.821: CSM_RX_CAS_EVENT_FROM_NEAT:(0018):EVENT_START_RX_TONE at slot 2

and port 16
Jan 6 10:41:28.821: from NEAT(0): (0/0): **TX SEIZURE_ACK** (ABCD=1101)
!--- Digit 5 is sent: Forward Signal Group I-5. Jan 6 10:41:29.233: vtsp_process_dsp_message:
MSG_TX_DTMF_DIGIT_BEGIN: digit=5,
rtp_timestamp=0x0CA95D43 dc_digit_up
Jan 6 10:41:29.233: csm_vtsp_digit_ready_up (vtsp_cdb=0x621C5F3C) received digit (5)
Jan 6 10:41:29.233: CSM voice (2/16): Rcvd Digit detected(5)
Jan 6 10:41:29.233: R2 Incoming Voice(2/16): DSX (E1 0:0):
STATE: R2_IN_COLLECT_DNIS R2
Got Event 5
Jan 6 10:41:29.365: vtsp_process_dsp_message: **MSG_TX_DTMF_DIGIT_OFF: digit=5,**
duration=8321dc_digit
Jan 6 10:41:29.365: csm_vtsp_digit_ready (vtsp_cdb=0x621C5F3C) received digit (5)
Jan 6 10:41:29.365: CSM voice (2/16): Rcvd Digit detected(5)
Jan 6 10:41:29.365: R2 Incoming Voice(2/16): DSX (E1 0:0):
STATE:R2_IN_COLLECT_DNIS R2
Got Event R2_TONE_OFF
!--- Digit 6 is sent: Forward Signal Group I-6. Jan 6 10:41:29.593: vtsp_process_dsp_message:
MSG_TX_DTMF_DIGIT_BEGIN: digit=6,
rtp_timestamp=0x0CA95D43 dc_digit_up
Jan 6 10:41:29.593: csm_vtsp_digit_ready_up (vtsp_cdb=0x621C5F3C) received digit (6)
Jan 6 10:41:29.593: CSM voice (2/16): Rcvd Digit detected(6)
Jan 6 10:41:29.593: R2 Incoming Voice(2/16): DSX (E1 0:0):
STATE: R2_IN_COLLECT_DNIS R2
Got Event 6
Jan 6 10:41:29.725: vtsp_process_dsp_message: **MSG_TX_DTMF_DIGIT_OFF: digit=6,**
duration=8321dc_digit
Jan 6 10:41:29.725: csm_vtsp_digit_ready (vtsp_cdb=0x621C5F3C) received digit (6)
Jan 6 10:41:29.725: CSM voice (2/16): Rcvd Digit detected(6)
Jan 6 10:41:29.725: R2 Incoming Voice(2/16): DSX (E1 0:0):
STATE: R2_IN_COLLECT_DNIS R2
Got Event R2_TONE_OFF
!--- Digit 7 is sent: Forward Signal Group I-7. Jan 6 10:41:29.953: vtsp_process_dsp_message:
MSG_TX_DTMF_DIGIT_BEGIN:
digit=7, rtp_timestamp=0x0CA95D43 dc_digit_up
Jan 6 10:41:29.953: csm_vtsp_digit_ready_up (vtsp_cdb=0x621C5F3C)
received digit (7)
Jan 6 10:41:29.953: CSM voice (2/16): Rcvd Digit detected(7)
Jan 6 10:41:29.953: R2 Incoming Voice(2/16): DSX (E1 0:0):
STATE:R2_IN_COLLECT_DNIS R2
Got Event 7
Jan 6 10:41:30.085: vtsp_process_dsp_message: **MSG_TX_DTMF_DIGIT_OFF:**
digit=7, duration=8321dc_digit
Jan 6 10:41:30.085: csm_vtsp_digit_ready (vtsp_cdb=0x621C5F3C)received digit (7)
Jan 6 10:41:30.085: CSM voice (2/16): Rcvd Digit detected(7)
Jan 6 10:41:30.085: R2 Incoming Voice(2/16): DSX (E1 0:0):
STATE: R2_IN_COLLECT_DNIS R2
Got Event R2_TONE_OFF
!--- Timeout: 3 seconds (default timer - AS5300 assumes DNIS is finished). Jan 6 10:41:32.953:
R2 Incoming Voice(2/16): DSX (E1 0:0): **STATE: R2_IN_COLLECT_DNIS R2 Got Event R2_TONE_TIMER**
!--- Send digit 6: Backward Signal Group B-6 (subscriber's line free-charge). Jan 6
10:41:32.953: vtsp_r2_generate_digits: vdev_common=0x620BF8E4, string=567dc_dial()
vtsp_dial_nopush **dsp_dtmf_dialing(): dial_string = 6#**
Jan 6 10:41:32.953: dsp_dtmf_dialing: [0:1:0] packet_Len=36 channel_id=8529
packet_id=90 string=6# digits=2, time_on=150, time_off=30
Jan 6 10:41:32.953:& digit=e, components=2, freq_of_first=900,
freq_of_second=780, amp_of_first=8192, amp_of_second=8192
Jan 6 10:41:32.953: digit=o, components=2, freq_of_first=0,
freq_of_second=0, amp_of_first=1, amp_of_second=1
Jan 6 10:41:33.313: vtsp_process_dsp_message:
MSG_TX_DIALING_DONE dc_dialing_done()
Jan 6 10:41:33.313: R2 Incoming Voice(2/16): DSX (E1 0:0):
STATE:R2_IN_ANSWER_PULSE R2

Got Event R2_DIGITS_GENR2_ALERTING

Jan 6 10:41:34.313: R2 Incoming Voice(2/16): DSX (E1 0:0):

STATE: R2_IN_ANSWER_PULSE R2

Got Event R2_TONE_TIMER

Jan 6 10:41:34.313: R2_IN_IDLE:2 r2_in_connect called

Jan 6 10:41:34.313: CSM_PROC_IC1_COLLECT_ADDR_INFO:

CSM_EVENT_ADDR_INFO_COLLECTED (DNIS=567, ANI=) at slot 2, port 16

Jan 6 10:41:34.313: vtsp_tsp_call_accept_check (sdb=0x61B8F0E0, calling_number= called_number=567): peer_tag=0

Jan 6 10:41:34.313: VDEV_ALLOCATE: failed to allocate a device

Jan 6 10:41:34.313: VDEV_ALLOCATE_ALMOST_READY: failed to allocate a non-idle modem

Jan 6 10:41:34.313: VDEV_ALLOCATE: failed to allocate a device

Jan 6 10:41:34.313: VDEV_ALLOCATE_ALMOST_READY: failed to allocate a non-idle modem

Jan 6 10:41:34.313: VDEV_ALLOCATE: failed to allocate a device

Jan 6 10:41:34.313: VDEV_ALLOCATE_ALMOST_READY: failed to allocate a non-idle modem

Jan 6 10:41:34.313: CSM_PROC_IC3_WAIT_FOR_RES_RESP: CSM_EVENT_RESOURCE_OK at slot 2, port 16

Jan 6 10:41:34.313: vtsp_ic_switch : (voice_vdev= 0x620BF874)

Jan 6 10:41:34.313: vtsp_tsp_call_switch_ind (cdb=0x621C5F3C, tsp_info=0x620BF874, calling_number= called_number=567 redir ect_number=):

peer_tag=123dc_switch: fsm_pop()

Jan 6 10:41:34.313: vtsp_do_call_setup_ind

Jan 6 10:41:34.313: vtsp_do_call_setup_ind: Call ID=65683, guid=61FAF610

Jan 6 10:41:34.313: vtsp_do_call_setup_ind: type=0, under_spec=0,

name=ab^Lx, id0=1, id1=0, id2=0, calling=123, called=567

Jan 6 10:41:34.317: dsp_cp_tone_off: [] packet_Len=8 channel_id=8529 packet_id=71

Jan 6 10:41:34.317: dsp_idle_mode: [] packet_Len=8 channel_id=8529 packet_id=68

Jan 6 10:41:34.317: dsp_close_voice_channel: [] packet_Len=8 channel_id=8529

packet_id=75

Jan 6 10:41:34.317: vtsp_timer_stop: 67475758

Jan 6 10:41:34.317: csm_vtsp_call_setup_resp (vdev_info=0x620BF874,

vtsp_cdb=0x621C5F3C)

Jan 6 10:41:34.317: csm_vtsp_call_setup_resp:vdev_common

BP TS allocatedat BP_stream0,

BP_Ch28

Jan 6 10:41:34.317: csm_vtsp_call_setup_resp:DST_tdm_chnl call. BP TS allocatedat stream 5, chan 3,BP_stream 0, BP_ch 28

Jan 6 10:41:34.317: csm_vtsp_call_setup_resp:DST_tdm_chnl call. BP TS allocatedat stream 5, chan 3,BP_stream 0, BP_ch 28vt sp_open_voice_and_set_params

Jan 6 10:41:34.317: dsp_close_voice_channel: [0:1 (54)] packet_Len=8 channel_id=8529 packet_id=75

Jan 6 10:41:34.317: dsp_open_voice_channel_20: [0:1 (54)] packet_Len=16

channel_id=8529

packet_id=74 alaw_ulaw_select=1 associated_signaling_channel=0 time_slot=0

serial_port=0

Jan 6 10:41:34.317: dsp_encap_config_20: [0:1 (54)] packet_Len=24 channel_id=8529

packet_id=92 TransportProtocol 2 t_src=0x0 r_src=0x0 t_vpxcc=0x0 r_vpxcc=0x0

Jan 6 10:41:34.317: dsp_set_payout: [0:1 (54)] packet_Len=18 channel_id=8529

packet_id=76 mode=1 initial=60 min=4 max=200 fax_nom=300

Jan 6 10:41:34.317: dsp_echo_canceller_control: [0:1 (54)] packet_Len=10

channel_id=8529

packet_id=66 flags=0x0

Jan 6 10:41:34.317: dsp_set_gains: [0:1 (54)] packet_Len=12

channel_id=8529 packet_id=91

in_gain=0 out_gain=0

Jan 6 10:41:34.317: dsp_vad_enable: [0:1 (54)] packet_Len=10

channel_id=8529 packet_id=78

thresh=-38act_proceeding

Jan 6 10:41:34.321: csm_vtsp_call_proceeding:DST_tdm_chnl call.

BP TS allocatedstream 5,

chan 3,BP_stream 0, BP_ch 28act_alert

Jan 6 10:41:34.345: vtsp_ring_noan_timer_start: 67475761

Jan 6 10:41:34.345: csm_vtsp_call_alert (vtsp_cdb=0x621C5F3C)act_bridge act_caps_ind

Jan 6 10:41:34.589: act_caps_ind:Encap 1, Vad 2, Codec 0x4, CodecBytes 20,

```

FaxRate 2, FaxBytes 20 SignalType 0
DtmfRelay 1, Modem lact_caps_ack
Jan 6 10:41:34.589: dsp_idle_mode: [0:1 (54)] packet_Len=8
channel_id=8529 packet_id=68
Jan 6 10:41:34.589: act_caps_ack: codec = 15, ret = 1
Jan 6 10:41:34.589: dsp_cp_tone_off: [0:1 (54)] packet_Len=8 channel_id=8529
packet_id=71
Jan 6 10:41:34.589: dsp_idle_mode: [0:1 (54)] packet_Len=8
channel_id=8529 packet_id=68
Jan 6 10:41:34.589: dsp_encap_config_20: [0:1 (54)] packet_Len=24 channel_id=8529
packet_id=92 TransportProtocol 2 t_ssrc=0x0 r_ssrc=0x0 t_vpxcc=0x0 r_vpxcc=0x0
Jan 6 10:41:34.589: dsp_voice_mode: [0:1 (54)] packet_Len=24 channel_id=8529
packet_id=73 coding_type=20 voice_field_size=20 VAD_flag=1 echo_length=64
comfort_noise=1 inband_detect=1 digit_relay=2 AGC_flag=0act_alert_connect
Jan 6 10:41:36.857: vtsp_ring_noan_timer_stop: 67476012
Jan 6 10:41:36.857: dsp_cp_tone_off: [0:1 (54)] packet_Len=8 channel_id=8529
packet_id=71
Jan 6 10:41:36.857: csm_vtsp_call_connect (vtsp_cdb=0x621C5F3C,
voice_vdev=0x620BF874)
Jan 6 10:41:36.857: CSM_IC5_WAIT_FOR_SWITCH_OVER: CSM_EVENT_MODEM_OFFHOOK
at slot 2, port 16
Jan 6 10:41:36.917: CSM_RX_CAS_EVENT_FROM_NEAT:(0018): EVENT_CHANNEL_CONNECTED
at slot 2 and port 16
Jan 6 10:41:36.917: CSM_PROC_IC6_WAIT_FOR_CONNECT: CSM_EVENT_DSX0_CONNECTED
at slot 2, port 16
Jan 6 10:41:36.921: from NEAT(0): (0/0): TX ANSWERED(ABCD=0101)
eefje#

```

[R2 Digitaal semihard: Inkomend gesprek aan 567](#)

Raadpleeg de [E1 R2-signaleringstheorie](#) om dit **debug-uitvoer** beter te begrijpen.

```

eefje#show debug
CAS:
Channel Associated Signaling debugging is on
CSM Voice:
Voice Call Switching Module debugging is on
Voice Telephony session debugging is on
Voice Telephony dsp debugging is on
Voice Telephony error debugging is on
eefje#
eefje#
eefje#
Jan 6 09:53:42.389: from NEAT(0): (0/2): Rx SEIZURE(ABCD=0001)
Jan 6 09:53:42.433: VDEV_ALLOCATE: failed to allocate a device
Jan 6 09:53:42.433: VDEV_ALLOCATE: 1/27 is allocated
Jan 6 09:53:42.433: csm_vtsp_init_tdm (voice_vdev=0x620BF320)
Jan 6 09:53:42.433: csm_vtsp_init_tdm: dsprm_tdm_allocate: tdm slot 2, dspm 1,
dsp 4, dsp_channel 4
Jan 6 09:53:42.433: csm_vtsp_init_tdm: dsprm_tdm_allocate: tdm stream 7, channel 0,
bank 4, BP_channel 3, BP_stream 255
Jan 6 09:53:42.433: CSM_RX_CAS_EVENT_FROM_NEAT:(cid0017): EVENT_CALL_DIAL_IN
at slot 2 and port 15
Jan 6 09:53:42.433: CSM_PROC_IDLE: CSM_EVENT_START_DIGIT_COLLECT
at slot 2, port 15
Jan 6 09:53:42.433: csm_vtsp_start_digit_collect (voice_vdev=0x620BF320)
Jan 6 09:53:42.433: Enter csm_connect_pri_vdev function
Jan 6 09:53:42.433: csm_connect_pri_vdev:tdm_allocate_BP_Ts()call. BP TS allocated
at BP_stream0, BP_Ch27,vdev_common 0x6 20BF390
Jan 6 09:53:42.433: to NEAT:(cid0017) EVENT_CHANNEL_LOCK for slot0 ctrl0 chan2
Jan 6 09:53:42.433: vtsp_do_call_setup_ind
Jan 6 09:53:42.433: vtsp_do_call_setup_ind: Call ID=65675, guid=61FAF610

```

Jan 6 09:53:42.433: vtsp_do_call_setup_ind: type=0, under_spec=0, name=, id0=0, id1=0, id2=0, calling=, called=
Jan 6 09:53:42.433: vtsp_do_call_setup_ind: redirect DN = reason =
0vtsp_open_voice_and_set_params
Jan 6 09:53:42.433: dsp_close_voice_channel: [0:1:2] packet_Len=8 channel_id=8516
packet_id=75
Jan 6 09:53:42.433: dsp_open_voice_channel_20: [0:1:2] packet_Len=16
channel_id=8516
packet_id=74 alaw_ulaw_select=1 associated_signaling_channel=0
time_slot=1 serial_port=1
Jan 6 09:53:42.433: dsp_encap_config_20: [0:1:2] packet_Len=24 channel_id=8516
packet_id=92 TransportProtocol 2 t_ssrc=0x0 r_ssrc=0x0 t_vpxcc=0x0 r_vpxcc=0x0
Jan 6 09:53:42.433: dsp_set_payout: [0:1:2] packet_Len=18 channel_id=8516
packet_id=76 mode=1 initial=60 min=4 max=200 fax_nom=300
Jan 6 09:53:42.433: dsp_echo_canceller_control: [0:1:2]
packet_Len=10 channel_id=8516
packet_id=66 flags=0x0
Jan 6 09:53:42.437: dsp_set_gains:[0:1:2] packet_Len=12
channel_id=8516 packet_id=91
in_gain=0 out_gain=0
Jan 6 09:53:42.437: dsp_vad_enable: [0:1:2] packet_Len=10 channel_id=8516
packet_id=78 thresh=-38
Jan 6 09:53:42.437: dsp_voice_mode: [0:1:2] packet_Len=24 channel_id=8516
packet_id=73 coding_type=1 voice_field_size=80 VAD_flag=0 echo_length=64
comfort_noise=1 inband_detect=1 digit_relay=2 AGC_flag=0vtsp_do_r2_start_digit():
dsp_dtmf_mode() dsp_dtmf_mode(VTSP_TONE_R2_MF_FORWARD_MODE)
Jan 6 09:53:42.437: dsp_dtmf_mode: [0:1:2] packet_Len=10 channel_id=8516
packet_id=65 dtmf_or_mf=1vtsp_do_r2_start_digit(): fsm_push(vtsp_r2_state_table)
Jan 6 09:53:42.437: csm_vtsp_call_setup_resp (vdev_info=0x620BF320,
vtsp_cdb=0x621C5F3C)
Jan 6 09:53:42.437: csm_vtsp_call_setup_resp:vdev_common BP
TS allocatedat BP_stream0,
BP_Ch27
Jan 6 09:53:42.437: csm_vtsp_call_setup_resp:DST_tdm_chnl call. BP TS allocatedat
stream 7, chan 0,BP_stream 255, BP_ch 3
Jan 6 09:53:42.437: csm_vtsp_call_setup_resp:DST_tdm_chnl call. BP TS allocatedat
stream 7, chan 0,BP_stream 0, BP_ch 27
Jan 6 09:53:42.437: CSM_PROC_IC1_COLLECT_ADDR_INFO: CSM_EVENT_MODEM_OFFHOOK
(DNIS=, ANI=) at slot 2, port 15
Jan 6 09:53:42.437: R2 Incoming Voice(2/15): DSX (E1 0:2): STATE:R2_IN_IDLE R2
Got Event R2_START
Jan 6 09:53:42.533: CSM_RX_CAS_EVENT_FROM_NEAT:(0017):EVENT_START_RX_TONE
at slot 2 and port 15
Jan 6 09:53:42.533: from NEAT(0): (0/2): **TX SEIZURE ACK (ABCD=1101)**
!--- Digit 5 is sent: Forward Signal Group I-5. Jan 6 09:53:42.641: vtsp_process_dsp_message:
MSG_TX_DTMF_DIGIT_BEGIN: digit=5, rtp_timestamp=0x9330B42B dc_digit_up Jan 6 09:53:42.641:
csm_vtsp_digit_ready_up (vtsp_cdb=0x621C5F3C) received digit (5) Jan 6 09:53:42.641: CSM voice
(2/15): Rcvd Digit detected(5) Jan 6 09:53:42.641: R2 Incoming Voice(2/15): DSX (E1 0:2):
STATE:R2_IN_COLLECT_DNIS R2
Got Event 5
*!--- Digit 1 sent (pulse): Backward Signal Group A-1 (Send next digit) !--- "#" this indicates
that it is a pulse).* Jan 6 09:53:42.641: vtsp_r2_generate_digits: vdev_common=0x620BF390,
string=5dc_dial() vtsp_dial_nopush **dsp_dtmf_dialing(): dial_string = 1#**
Jan 6 09:53:42.641: dsp_dtmf_dialing: [0:1:2] packet_Len=36 channel_id=8516
packet_id=90 string=1# digits=2, time_on=150, time_off=30
Jan 6 09:53:42.641: digit=` , components=2, freq_of_first=1020,
freq_of_second=1140,
amp_of_first=8192, amp_of_second=8192
Jan 6 09:53:42.641: digit=o, components=2, freq_of_first=0, freq_of_second=0,
amp_of_first=1, amp_of_second=1
Jan 6 09:53:42.741: vtsp_process_dsp_message: MSG_TX_DTMF_DIGIT_OFF: digit=5,
duration=8291dc_digit
Jan 6 09:53:42.741: csm_vtsp_digit_ready (vtsp_cdb=0x621C5F3C) received digit (5)

Jan 6 09:53:42.741: CSM voice (2/15): Rcvd Digit detected(5)
Jan 6 09:53:42.741: R2 Incoming Voice(2/15): DSX (E1 0:2):
STATE:R2_IN_COLLECT_DNIS R2
Got Event R2_TONE_OFF
!--- Digit 6 is sent: Forward Signal Group I. Jan 6 09:53:42.881: vtsp_process_dsp_message:
MSG_TX_DTMF_DIGIT_BEGIN: digit=6, rtp_timestamp=0x9330B42B dc_digit_up Jan 6 09:53:42.881:
csm_vtsp_digit_ready_up (vtsp_cdb=0x621C5F3C)received digit (6) Jan 6 09:53:42.881: CSM voice
(2/15): Rcvd Digit detected(6) Jan 6 09:53:42.881: R2 Incoming Voice(2/15): DSX (E1 0:2):
STATE:R2_IN_COLLECT_DNIS R2 **Got Event 6**
!--- Digit 1 sent (pulse): Backward Signal Group A-1. (Send next digit.) Jan 6 09:53:42.881:
vtsp_r2_generate_digits: vdev_common=0x620BF390, string=56dc_dial() vtsp_dial_nopush
dsp_dtmf_dialing(): dial_string = 1#
Jan 6 09:53:42.881: dsp_dtmf_dialing: [0:1:2] packet_Len=36 channel_id=8516
packet_id=90 string=1# digits=2, time_on=150, time_off=30
Jan 6 09:53:42.881: digit=` , components=2, freq_of_first=1020,
freq_of_second=1140,
amp_of_first=8192, amp_of_second=8192
Jan 6 09:53:42.881: digit=o, components=2, freq_of_first=0, freq_of_second=0,
amp_of_first=1, amp_of_second=1
Jan 6 09:53:42.981: vtsp_process_dsp_message: MSG_TX_DTMF_DIGIT_OFF: digit=6,
duration=8291dc_digit
Jan 6 09:53:42.981: csm_vtsp_digit_ready (vtsp_cdb=0x621C5F3C) received digit (6)
Jan 6 09:53:42.981: CSM voice (2/15): Rcvd Digit detected(6)
Jan 6 09:53:42.981: R2 Incoming Voice(2/15): DSX (E1 0:2):
STATE:R2_IN_COLLECT_DNIS R2
Got Event R2_TONE_OFF
!--- Digit 7 is sent: Forward Signal Group I-7. Jan 6 09:53:43.121: vtsp_process_dsp_message:
MSG_TX_DTMF_DIGIT_BEGIN:
digit=7, rtp_timestamp=0x9330B42B dc_digit_up
Jan 6 09:53:43.121: csm_vtsp_digit_ready_up (vtsp_cdb=0x621C5F3C)received digit (7)
Jan 6 09:53:43.121: CSM voice (2/15): Rcvd Digit detected(7)
Jan 6 09:53:43.121: R2 Incoming Voice(2/15): DSX (E1 0:2):
STATE:R2_IN_COLLECT_DNIS R2
Got Event 7
!--- Send digit 1 (pulse): Backward Signal Group A-1. Jan 6 09:53:43.121:
vtsp_r2_generate_digits: vdev_common=0x620BF390, string=567dc_dial() vtsp_dial_nopush
dsp_dtmf_dialing(): dial_string = 1#
Jan 6 09:53:43.121: dsp_dtmf_dialing: [0:1:2] packet_Len=36 channel_id=8516
packet_id=90 string=1# digits=2, time_on=150, time_off=30
Jan 6 09:53:43.121: digit=` , components=2, freq_of_first=1020,
freq_of_second=1140,
amp_of_first=8192, amp_of_second=8192
Jan 6 09:53:43.121: digit=o, components=2, freq_of_first=0, freq_of_second=0,
amp_of_first=1, amp_of_second=1
Jan 6 09:53:43.221: vtsp_process_dsp_message: MSG_TX_DTMF_DIGIT_OFF: digit=7,
duration=8291dc_digit
Jan 6 09:53:43.221: csm_vtsp_digit_ready (vtsp_cdb=0x621C5F3C) received digit (7)
Jan 6 09:53:43.221: CSM voice (2/15): Rcvd Digit detected(7)
Jan 6 09:53:43.221: R2 Incoming Voice(2/15): DSX (E1 0:2):
STATE:R2_IN_COLLECT_DNIS R2
Got Event R2_TONE_OFF
Jan 6 09:53:43.489: vtsp_process_dsp_message: MSG_TX_DIALING_DONEdc_dialing_done()
!--- Timeout is 3 seconds. Jan 6 09:53:46.121: R2 Incoming Voice(2/15): DSX (E1 0:2):
STATE:R2_IN_COLLECT_DNIS R2
Got Event R2_TONE_TIMER
*!--- Digit 3 sent(pulse): Backward Signal Group A-3. !--- (Address-complete, changeover to
reception of Group-B signals).* Jan 6 09:53:46.121: vtsp_r2_generate_digits:
vdev_common=0x620BF390, string=567dc_dial() vtsp_dial_nopush dsp_dtmf_dialing(): dial_string =
3# Jan 6 09:53:46.121: dsp_dtmf_dialing: [0:1:2] packet_Len=36 channel_id=8516 packet_id=90
string=3# digits=2, time_on=150, time_off=30 Jan 6 09:53:46.121: digit=b, components=2,
freq_of_first=1020, freq_of_second=900, amp_of_first=8192, amp_of_second=8192 Jan 6
09:53:46.121: digit=o, components=2, freq_of_first=0, freq_of_second=0, amp_of_first=1,

amp_of_second=1 *!--- Digit 1 is sent: Forward Signal Group II-1 !--- (subscriber without priority).* Jan 6 09:53:46.361: vtsp_process_dsp_message: **MSG_TX_DTMF_DIGIT_BEGIN: digit=1**, rtp_timestamp=0x9330B42B dc_digit_up
Jan 6 09:53:46.361: csm_vtsp_digit_ready_up (vtsp_cdb=0x621C5F3C)
received digit (1)
Jan 6 09:53:46.361: CSM voice (2/15): Rcvd Digit detected(1)
Jan 6 09:53:46.361: R2 Incoming Voice(2/15): DSX (E1 0:2):
STATE:R2_IN_CATEGORY R2
Got Event 1
Jan 6 09:53:46.361: r2_comp_category:R2_ALERTING
!--- Digit 6 sent (pulse): Backward Signal Group B-6 !--- (the subscriber line free of charge).
Jan 6 09:53:46.361: vtsp_r2_generate_digits: vdev_common=0x620BF390, string=567dc_dial()
vtsp_dial_nopush **dsp_dtmf_dialing(): dial_string = 6#**

Jan 6 09:53:46.361: dsp_dtmf_dialing: [0:1:2] packet_Len=36 channel_id=8516
packet_id=90 string=6# digits=2, time_on=150, time_off=30
Jan 6 09:53:46.361: digit=e, components=2, freq_of_first=900,
freq_of_second=780,
amp_of_first=8192, amp_of_second=8192
Jan 6 09:53:46.361: digit=o, components=2, freq_of_first=0, freq_of_second=0,
amp_of_first=1, amp_of_second=1
Jan 6 09:53:46.461: vtsp_process_dsp_message: MSG_TX_DTMF_DIGIT_OFF:digit=1,
duration=8291dc_digit
Jan 6 09:53:46.461: csm_vtsp_digit_ready (vtsp_cdb=0x621C5F3C)received digit (1)
Jan 6 09:53:46.461: CSM voice (2/15): Rcvd Digit detected(1)
Jan 6 09:53:46.461: R2 Incoming Voice(2/15): DSX (E1 0:2): STATE:R2_IN_COMPLETE R2
Got Event R2_TONE_OFF
Jan 6 09:53:46.729: vtsp_process_dsp_message: MSG_TX_DIALING_DONEdc_dialing_done()
Jan 6 09:53:47.461: R2 Incoming Voice(2/15): DSX (E1 0:2):
STATE:R2_IN_WAIT_GUARD R2
Got Event R2_TONE_TIMER
Jan 6 09:53:47.461: R2_IN_IDLE:2 r2_in_connect called
Jan 6 09:53:47.461: CSM_PROC_IC1_COLLECT_ADDR_INFO: CSM_EVENT_ADDR_INFO_COLLECTED
(DNIS=567, ANI=) at slot 2, port 15
Jan 6 09:53:47.461: vtsp_tsp_call_accept_check (sdb=0x61B8F0E0,calling_number=
called_number=567): peer_tag=0
Jan 6 09:53:47.461: VDEV_ALLOCATE: failed to allocate a device
Jan 6 09:53:47.461: VDEV_ALLOCATE_ALMOST_READY: failed to allocate a non-idle modem
Jan 6 09:53:47.461: VDEV_ALLOCATE: failed to allocate a device
Jan 6 09:53:47.461: VDEV_ALLOCATE_ALMOST_READY: failed to allocate a non-idle modem
Jan 6 09:53:47.461: VDEV_ALLOCATE: failed to allocate a device
Jan 6 09:53:47.461: VDEV_ALLOCATE_ALMOST_READY: failed to allocate a non-idle modem
Jan 6 09:53:47.461: CSM_PROC_IC3_WAIT_FOR_RES_RESP: CSM_EVENT_RESOURCE_OK at slot 2,
port 15
Jan 6 09:53:47.461: vtsp_IC_switch : (voice_vdev= 0x620BF320)
Jan 6 09:53:47.461: vtsp_tsp_call_switch_ind (cdb=0x621C5F3C,tsp_info=0x620BF320,
calling_number= called_number=567 redirect_number=):
peer_tag=123dc_switch: fsm_pop()
Jan 6 09:53:47.461: vtsp_do_call_setup_ind
Jan 6 09:53:47.461: vtsp_do_call_setup_ind: Call ID=65677, guid=61FAF610
Jan 6 09:53:47.461: vtsp_do_call_setup_ind: type=0, under_spec=0, name=AB^Lo, id0=3,
id1=0, id2=0, calling=123, called=567
Jan 6 09:53:47.465: dsp_cp_tone_off: [] packet_Len=8 channel_id=8516 packet_id=71
Jan 6 09:53:47.465: dsp_idle_mode: [] packet_Len=8 channel_id=8516 packet_id=68
Jan 6 09:53:47.465: dsp_close_voice_channel: [] packet_Len=8 channel_id=8516
packet_id=75
Jan 6 09:53:47.465: vtsp_timer_stop: 67189073
Jan 6 09:53:47.465: csm_vtsp_call_setup_resp (vdev_info=0x620BF320,
vtsp_cdb=0x621C5F3C)
Jan 6 09:53:47.465: csm_vtsp_call_setup_resp:vdev_common
BP TS allocatedat BP_stream0,
BP_Ch27
Jan 6 09:53:47.465: csm_vtsp_call_setup_resp:DST_tdm_chnl call. BP TS allocatedat
stream 7, chan 0,BP_stream 0, BP_ch 27

```

Jan 6 09:53:47.465: csm_vtsp_call_setup_resp:DST_tdm_chnl call. BP TS allocatedat
stream 7, chan 0,BP_stream 0, BP_ch 27vtsp_open_voice_and_set_params
Jan 6 09:53:47.465: dsp_close_voice_channel: [0:1 (52)] packet_Len=8 channel_id=8516
packet_id=75
Jan 6 09:53:47.465: dsp_open_voice_channel_20: [0:1 (52)]
packet_Len=16 channel_id=8516
packet_id=74 alaw_ulaw_select=1 associated_signaling_channel=0
time_slot=1 serial_port=1
Jan 6 09:53:47.465: dsp_encap_config_20: [0:1 (52)] packet_Len=24
channel_id=8516
packet_id=92 TransportProtocol 2 t_ssrc=0x0 r_ssrc=0x0 t_vpxcc=0x0 r_vpxcc=0x0
Jan 6 09:53:47.465: dsp_set_payout: [0:1 (52)] packet_Len=18 channel_id=8516
packet_id=76 mode=1 initial=60 min=4 max=200 fax_nom=300
Jan& 6 09:53:47.465: dsp_echo_canceller_control: [0:1 (52)] packet_Len=10
channel_id=8516
packet_id=66 flags=0x0
Jan 6 09:53:47.465: dsp_set_gains: [0:1 (52)] packet_Len=12 channel_id=8516
packet_id=91 in_gain=0 out_gain=0
Jan 6 09:53:47.465: dsp_vad_enable: [0:1 (52)] packet_Len=10 channel_id=8516
packet_id=78 thresh=-38act_proceeding
Jan 6 09:53:47.469: csm_vtsp_call_proceeding:DST_tdm_chnl call. BP TS
allocatedstream 7,
chan 0,BP_stream 0, BP_ch 27act_alert
Jan 6 09:53:47.493: vtsp_ring_noan_timer_start: 67189076
Jan 6 09:53:47.493: csm_vtsp_call_alert (vtsp_cdb=0x621C5F3C)
act_bridge act_caps_ind
Jan 6 09:53:47.737: act_caps_ind:Encap 1, Vad 2, Codec 0x4, CodecBytes 20,
FaxRate 2, FaxBytes 20 SignalType 0
DtmfRelay 1, Modem lact_caps_ack
Jan 6 09:53:47.737: dsp_idle_mode: [0:1 (52)] packet_Len=8 channel_id=8516
packet_id=68
Jan 6 09:53:47.737: act_caps_ack: codec = 15, ret = 1
Jan 6 09:53:47.737: dsp_cp_tone_off: [0:1 (52)] packet_Len=8 channel_id=8516
packet_id=71
Jan 6 09:53:47.737: dsp_idle_mode: [0:1 (52)] packet_Len=8 channel_id=8516
packet_id=68
Jan 6 09:53:47.737: dsp_encap_config_20: [0:1 (52)] packet_Len=24 channel_id=8516
packet_id=92 TransportProtocol 2 t_ssrc=0x0 r_ssrc=0x0 t_vpxcc=0x0 r_vpxcc=0x0
Jan 6 09:53:47.737: dsp_voice_mode: [0:1 (52)] packet_Len=24 channel_id=8516
packet_id=73 coding_type=20 voice_field_size= 20 VAD_flag=1 echo_length=64
comfort_noise=1 inband_detect=1 digit_relay=2 AGC_flag=0act_alert_connect
Jan 6 09:53:49.461: vtsp_ring_noan_timer_stop: 67189273
Jan 6 09:53:49.461: dsp_cp_tone_off: [0:1 (52)] packet_Len=8 channel_id=8516
packet_id=71
Jan 6 09:53:49.461: csm_vtsp_call_connect (vtsp_cdb=0x621C5F3C,
voice_vdev=0x620BF320)
Jan 6 09:53:49.461: CSM_IC5_WAIT_FOR_SWITCH_OVER: CSM_EVENT_MODEM_OFFHOOK
at slot 2, port 15
Jan 6 09:53:49.617: CSM_RX_CAS_EVENT_FROM_NEAT:(0017): EVENT_CHANNEL_CONNECTED
at slot 2 and port 15
Jan 6 09:53:49.617: CSM_PROC_IC6_WAIT_FOR_CONNECT: CSM_EVENT_DSX0_CONNECTED
at slot 2, port 15
Jan 6 09:53:49.621: from NEAT(0): (0/2): TX ANSWERED(ABCD=0101)
eefje#
eefje#

```

[R2 digitale gecomprieeerde ANI: Inkomend gesprek aan 567](#)

Raadpleeg het gedeelte [E1 R2-signalering](#) om dit **debug** uitvoer beter te begrijpen.

eefje#**debug csm voice**

Voice Call Switching Module debugging is on

eefje#**debug cas**

Channel Associated Signaling debugging is on

Jan 7 10:00:02.907: from NEAT(0): debug-cas is on

Jan 7 10:00:02.907: from NEAT(0): special debug-cas is offg vtsp all

Voice telephony call control all debugging is on

eefje#

eefje#

Jan 7 10:00:23.883: from NEAT(0): (0/8): **Rx SEIZURE** (ABCD=0001)

Jan 7 10:00:23.927: VDEV_ALLOCATE: failed to allocate a device

Jan 7 10:00:23.927: VDEV_ALLOCATE: 1/2 is allocated

Jan 7 10:00:23.927: csm_vtsp_init_tdm (voice_vdev=0x61F19688)

Jan 7 10:00:23.927: csm_vtsp_init_tdm: dsprm_tdm_allocate: tdm slot 1,

dspm 3, dsp 4,

dsp_channel 1

Jan 7 10:00:23.927: csm_vtsp_init_tdm: dsprm_tdm_allocate: tdm stream 5,

channel 13,

bank 0, BP_channel 15, BP_stream 255

Jan 7 10:00:23.927: CSM_RX_CAS_EVENT_FROM_NEAT:(cid0007):

EVENT_CALL_DIAL_IN at slot 1

and port 60

Jan 7 10:00:23.927: CSM_PROC_IDLE: CSM_EVENT_START_DIGIT_COLLECT at slot 1, port 60

Jan 7 10:00:23.927: csm_vtsp_start_digit_collect (voice_vdev=0x61F19688)

Jan 7 10:00:23.927: Enter csm_connect_pri_vdev function

Jan 7 10:00:23.927: csm_connect_pri_vdev:tdm_allocate_BP_Ts() call. BP

TS allocated at BP_stream0, BP_Ch8,vdev_common 0x6205E5F8

Jan 7 10:00:23.927: to NEAT:(cid0007) EVENT_CHANNEL_LOCK for slot0 ctrl0 chan8

Jan 7 10:00:23.927: vtsp_do_call_setup_ind

Jan 7 10:00:23.927: vtsp_do_call_setup_ind: Call ID=65579, guid=62031A88

Jan 7 10:00:23.927: vtsp_do_call_setup_ind: type=0, under_spec=0,

name=, id0=0, id1=0,id2=0, calling=, called=

Jan 7 10:00:23.927: vtsp_do_call_setup_ind: redirect DN = reason =

0vtsp_do_r2_start_digit(): fsm_push(vtsp_r2_state_table)

Jan 7 10:00:23.927: csm_vtsp_call_setup_resp (vdev_info=0x61F19688,

vtsp_cdb=0x61B5BFF8)

Jan 7 10:00:23.927: csm_vtsp_call_setup_resp:vdev_common

BP TS allocatedat BP_stream0,

BP_Ch8

Jan 7 10:00:23.927: csm_vtsp_call_setup_resp:DST_tdm_chnl call.

BP TS allocatedat stream

5, chan 13,BP_stream 255, BP_ch 15

Jan 7 10:00:23.927: csm_vtsp_call_setup_resp:DST_tdm_chnl call.

BP TS allocatedat stream

5, chan 13,BP_stream 0, BP_ch 8

Jan 7 10:00:23.927: CSM_PROC_IC1_COLLECT_ADDR_INFO: CSM_EVENT_MODEM_OFFHOOK

(DNIS=, ANI=) at slot 1, port 60

Jan 7 10:00:23.931: R2 Incoming Voice(1/60): DSX (E1 0:8): STATE: R2_IN_IDLE

R2 Got Event R2_START

Jan 7 10:00:24.027: CSM_RX_CAS_EVENT_FROM_NEAT:(0007): EVENT_START_RX_TONE

at slot 1 and port 60

Jan 7 10:00:24.027: from NEAT(0): (0/8): **TX SEIZURE_ACK**

(ABCD=1101)dc_init_dsp

vtsp_open_voice_and_set_params

Jan 7 10:00:24.151: dsp_close_voice_channel: [0:1:8] packet_Len=8 channel_id=4929

packet_id=75

Jan 7 10:00:24.151: dsp_open_voice_channel_20: [0:1:8] packet_Len=16

channel_id=4929

packet_id=74 alaw_ulaw_select=1 associated_signaling_channel=0

time_slot=0 serial_port=0

Jan 7 10:00:24.151: dsp_encap_config_20: [0:1:8] packet_Len=24 channel_id=4929

packet_id=92 TransportProtocol 2 t_ssrc=0x0 r_ssrc=0x0 t_vpxcc=0x0 r_vpxcc=0x0

Jan 7 10:00:24.151: dsp_set_payout: [0:1:8] packet_Len=18 channel_id=4929

packet_id=76 mode=1 initial=60 min=4 max=200 fax_nom=300

Jan 7 10:00:24.151: dsp_echo_canceller_control: [0:1:8]
packet_Len=10 channel_id=4929
packet_id=66 flags=0x0
Jan 7 10:00:24.151: dsp_set_gains: [0:1:8] packet_Len=12
channel_id=4929 packet_id=91
in_gain=0 out_gain=0
Jan 7 10:00:24.151: dsp_vad_enable: [0:1:8] packet_Len=10
channel_id=4929 packet_id=78
thresh=-38
Jan 7 10:00:24.151: dsp_voice_mode: [0:1:8] packet_Len=24
channel_id=4929 packet_id=73
coding_type=1 voice_field_size=80 VAD_flag=0 echo_length=64
comfort_noise=1
inband_detect=1 digit_relay=2 AGC_flag=0dsp_dtmf_mode
(VTSP_TONE_R2_MF_FORWARD_MODE)
Jan 7 10:00:24.151: dsp_dtmf_mode: [0:1:8] packet_Len=10 channel_id=4929
packet_id=65dtmf_or_mf=1
!--- Digit 5 is sent: Forward Signal Group I-5 (First DNIS digit). Jan 7 10:00:24.203:
vtsp_process_dsp_message: **MSG_TX_DTMF_DIGIT_BEGIN: digit=5,**
rtp_timestamp=0x04030000 dc_digit_up
Jan 7 10:00:24.203: csm_vtsp_digit_ready_up (vtsp_cdb=0x61B5BFF8)received digit (5)
Jan 7 10:00:24.203: CSM voice (1/60): Rcvd Digit detected(5)
Jan 7 10:00:24.203: R2 Incoming Voice(1/60): DSX (E1 0:8):
STATE:R2_IN_PRE_CALLERID R2
Got Event 5
!--- Send Backward Signal Group A-5 (caller category request). Jan 7 10:00:24.203:
vtsp_r2_generate_digits: vdev_common=0x6205E5F8, string=5dc_dial()vtsp_dial_nopush
dsp_dtmf_dialing(): dial_string = 5
Jan 7 10:00:24.203: dsp_dtmf_dialing: [0:1:8] packet_Len=24
channel_id=4929packet_id=90
string=5 digits=1, time_on=65435, time_off=30
Jan 7 10:00:24.203: digit=, components=2, freq_of_first=1020,
freq_of_second=780,
amp_of_first=8192, amp_of_second=8192
Jan 7 10:00:24.303: vtsp_process_dsp_message: MSG_TX_DTMF_DIGIT_OFF:digit=5,
duration=30dc_digit
Jan 7 10:00:24.303: csm_vtsp_digit_ready (vtsp_cdb=0x61B5BFF8) received digit (5)
Jan 7 10:00:24.303: CSM voice (1/60): Rcvd Digit detected(5)
Jan 7 10:00:24.303: R2 Incoming Voice(1/60): DSX (E1 0:8):
STATE:R2_IN_CALLERID R2
Got Event R2_TONE_OFF
Jan 7 10:00:24.303: vtsp_r2_generate_digits: vdev_common=0x6205E5F8,
string=5dc_dial()
vtsp_dial_nopush dsp_dtmf_dialing(): dial_string = #
Jan 7 10:00:24.303: dsp_dtmf_dialing: [0:1:8] packet_Len=24 channel_id=4929
packet_id=90 string=# digits=1, time_on=150, time_off=30
Jan 7 10:00:24.303: digit=, components=2, freq_of_first=0, freq_of_second=0,
amp_of_first=1, amp_of_second=1
!--- Caller Category Forward Signal Group II-1 is sent. Jan 7 10:00:24.403:
vtsp_process_dsp_message: **MSG_TX_DTMF_DIGIT_BEGIN: digit=1,**
rtp_timestamp=0x001E0010 dc_digit_up
Jan 7 10:00:24.403: csm_vtsp_digit_ready_up (vtsp_cdb=0x61B5BFF8)received
digit (1)
Jan 7 10:00:24.403: CSM voice (1/60): Rcvd Digit detected(1)
Jan 7 10:00:24.403: R2 Incoming Voice(1/60): DSX (E1 0:8): STATE:R2_IN_CALLERID R2
Got Event 1
!--- Send Backward Signal Group A-5 (Caller ID request). Jan 7 10:00:24.403:
vtsp_r2_generate_digits: vdev_common=0x6205E5F8, string=5dc_dial() vtsp_dial_nopush
dsp_dtmf_dialing(): dial_string = 5
Jan 7 10:00:24.403: dsp_dtmf_dialing: [0:1:8] packet_Len=24
channel_id=4929 packet_id=90
string=5 digits=1, time_on=65435, time_off=30

Jan 7 10:00:24.403: digit=, components=2, freq_of_first=1020, freq_of_second=780,
amp_of_first=8192, amp_of_second=8192
Jan 7 10:00:24.503: vtsp_process_dsp_message: MSG_TX_DTMF_DIGIT_OFF: digit=1,
duration=30dc_digit
Jan 7 10:00:24.503: csm_vtsp_digit_ready (vtsp_cdb=0x61B5BFF8) received digit (1)
Jan 7 10:00:24.503: CSM voice (1/60): Rcvd Digit detected(1)
Jan 7 10:00:24.503: R2 Incoming Voice(1/60): DSX (E1 0:8):
STATE:R2_IN_CALLERID R2
Got Event R2_TONE_OFF
Jan 7 10:00:24.503: vtsp_r2_generate_digits: vdev_common=0x6205E5F8,
string=5dc_dial()
vtsp_dial_nopush dsp_dtmf_dialing(): dial_string = #
Jan 7 10:00:24.503: dsp_dtmf_dialing: [0:1:8] packet_Len=24
channel_id=4929 packet_id=90
string=# digits=1, time_on=150, time_off=30
Jan 7 10:00:24.503: digit=, components=2, freq_of_first=0, freq_of_second=0,
amp_of_first=1, amp_of_second=1
!--- First ANI digit is sent: Forward Signal Group I-1. Jan 7 10:00:24.603:
vtsp_process_dsp_message: **MSG_TX_DTMF_DIGIT_BEGIN:**
digit=1, rtp_timestamp=0x001E0010 dc_digit_up
Jan 7 10:00:24.603: csm_vtsp_digit_ready_up (vtsp_cdb=0x61B5BFF8) received digit (1)
Jan 7 10:00:24.603: CSM voice (1/60): Rcvd Digit detected(1)
Jan 7 10:00:24.603: R2 Incoming Voice(1/60): DSX (E1 0:8):
STATE:R2_IN_CALLERID R2
Got Event 1
!--- Send Backward Signal Group A-5 (Caller ID request). Jan 7 10:00:24.603:
vtsp_r2_generate_digits: vdev_common=0x6205E5F8, string=5dc_dial()vtsp_dial_nopush
dsp_dtmf_dialing(): dial_string = 5
Jan 7 10:00:24.603: dsp_dtmf_dialing: [0:1:8] packet_Len=24
channel_id=4929 packet_id=90
string=5 digits=1, time_on=65435, time_off=30
Jan 7 10:00:24.603: digit=, components=2, freq_of_first=1020,
freq_of_second=780,
amp_of_first=8192, amp_of_second=8192
Jan 7 10:00:24.703: vtsp_process_dsp_message: MSG_TX_DTMF_DIGIT_OFF: digit=1,
duration=30dc_digit
Jan 7 10:00:24.703: csm_vtsp_digit_ready (vtsp_cdb=0x61B5BFF8) received digit (1)
Jan 7 10:00:24.703: CSM voice (1/60): Rcvd Digit detected(1)
Jan 7 10:00:24.703: R2 Incoming Voice(1/60): DSX (E1 0:8):
STATE:R2_IN_CALLERID R2
Got Event R2_TONE_OFF
Jan 7 10:00:24.703: vtsp_r2_generate_digits: vdev_common=0x6205E5F8,
string=5dc_dial()vtsp_dial_nopush dsp_dtmf_dialing(): dial_string = #
Jan 7 10:00:24.703: dsp_dtmf_dialing: [0:1:8] packet_Len=24
channel_id=4929 packet_id=90
string=# digits=1, time_on=150, time_off=30
Jan 7 10:00:24.703: digit=, components=2, freq_of_first=0, freq_of_second=0,
amp_of_first=1, amp_of_second=1
!--- Second ANI digit is sent: Forward Signal Group I-2. Jan 7 10:00:24.803:
vtsp_process_dsp_message: **MSG_TX_DTMF_DIGIT_BEGIN:digit=2,**
rtp_timestamp=0x001E0010 dc_digit_up
Jan 7 10:00:24.803: csm_vtsp_digit_ready_up (vtsp_cdb=0x61B5BFF8)
received digit (2)
Jan 7 10:00:24.803: CSM voice (1/60): Rcvd Digit detected(2)
Jan 7 10:00:24.803: R2 Incoming Voice(1/60): DSX (E1 0:8):
STATE:R2_IN_CALLERID R2
Got Event 2
!--- Send Backward Signal Group A-5 (Caller ID request). Jan 7 10:00:24.803:
vtsp_r2_generate_digits: vdev_common=0x6205E5F8, string=5dc_dial()vtsp_dial_nopush
dsp_dtmf_dialing(): dial_string = 5
Jan 7 10:00:24.803: dsp_dtmf_dialing: [0:1:8] packet_Len=24
channel_id=4929packet_id=90

string=5 digits=1, time_on=65435, time_off=30
Jan 7 10:00:24.803: digit=, components=2, freq_of_first=1020,
freq_of_second=780,
amp_of_first=8192, amp_of_second=8192
Jan 7 10:00:24.903: vtsp_process_dsp_message: MSG_TX_DTMF_DIGIT_OFF: digit=2,
duration=30dc_digit
Jan 7 10:00:24.903: csm_vtsp_digit_ready (vtsp_cdb=0x61B5BFF8) received digit (2)
Jan 7 10:00:24.903: CSM voice (1/60): Rcvd Digit detected(2)
Jan 7 10:00:24.903: R2 Incoming Voice(1/60): DSX (E1 0:8):
STATE:R2_IN_CALLERID
R2 Got Event R2_TONE_OFF
Jan 7 10:00:24.903: vtsp_r2_generate_digits: vdev_common=0x6205E5F8,
string=5dc_dial()vtsp_dial_nopush dsp_dtmf_dialing(): dial_string = #
Jan 7 10:00:24.903: dsp_dtmf_dialing: [0:1:8] packet_Len=24
channel_id=4929 packet_id=90
string=# digits=1, time_on=150, time_off=30
Jan 7 10:00:24.903: digit=, components=2, freq_of_first=0,
freq_of_second=0,
amp_of_first=1, amp_of_second=1
!--- Third ANI digit is sent: Forward Signal Group I-3. Jan 7 10:00:25.003:
vtsp_process_dsp_message: **MSG_TX_DTMF_DIGIT_BEGIN: digit=3,**
rtp_timestamp=0x001E0010 dc_digit_up
Jan 7 10:00:25.003: csm_vtsp_digit_ready_up (vtsp_cdb=0x61B5BFF8)
received digit (3)
Jan 7 10:00:25.003: CSM voice (1/60): Rcvd Digit detected(3)
Jan 7 10:00:25.003: R2 Incoming Voice(1/60): DSX (E1 0:8):
STATE:R2_IN_CALLERID R2
Got Event 3
!--- Send Backward Signal Group A-5 (Caller ID request). Jan 7 10:00:25.003:
vtsp_r2_generate_digits: vdev_common=0x6205E5F8, string=5dc_dial()vtsp_dial_nopush
dsp_dtmf_dialing(): dial_string = 5
Jan 7 10:00:25.003: dsp_dtmf_dialing: [0:1:8] packet_Len=24
channel_id=4929 packet_id=90
string=5 digits=1, time_on=65435, time_off=30
Jan 7 10:00:25.003: digit=, components=2, freq_of_first=1020,
freq_of_second=780,
amp_of_first=8192, amp_of_second=8192
Jan 7 10:00:25.103: vtsp_process_dsp_message: MSG_TX_DTMF_DIGIT_OFF:digit=3,
duration=30dc_digit
Jan 7 10:00:25.103: csm_vtsp_digit_ready (vtsp_cdb=0x61B5BFF8) received digit (3)
Jan 7 10:00:25.103: CSM voice (1/60): Rcvd Digit detected(3)
Jan 7 10:00:25.103: R2 Incoming Voice(1/60): DSX (E1 0:8):
STATE:R2_IN_CALLERID R2
Got Event R2_TONE_OFF
Jan 7 10:00:25.103: vtsp_r2_generate_digits: vdev_common=0x6205E5F8,
string=5dc_dial()vtsp_dial_nopush dsp_dtmf_dialing(): dial_string = #
Jan 7 10:00:25.103: dsp_dtmf_dialing: [0:1:8] packet_Len=24
channel_id=4929 packet_id=90
string=# digits=1, time_on=150, time_off=30
Jan 7 10:00:25.103: digit=, components=2, freq_of_first=0,
freq_of_second=0,
amp_of_first=1, amp_of_second=1
!--- Digit 15 is sent: Forward Signal Group I-15 (end of ANI digit). Jan 7 10:00:25.203:
vtsp_process_dsp_message: **MSG_TX_DTMF_DIGIT_BEGIN: digit=15,** rtp_timestamp=0x001E0010
dc_digit_up Jan 7 10:00:25.203: csm_vtsp_digit_ready_up (vtsp_cdb=0x61B5BFF8) received digit (*)
Jan 7 10:00:25.203: CSM voice (1/60): Rcvd Digit detected(*) Jan 7 10:00:25.203: R2 Incoming
Voice(1/60): DSX (E1 0:8): **STATE:R2_IN_CALLERID R2**
Got Event 15
!--- Send Backward Signal Group A-1 (next DNIS digit). Jan 7 10:00:25.203:
vtsp_r2_generate_digits: vdev_common=0x6205E5F8, string=5dc_dial()vtsp_dial_nopush
dsp_dtmf_dialing(): dial_string = 1
Jan 7 10:00:25.203: dsp_dtmf_dialing: [0:1:8] packet_Len=24
channel_id=4929 packet_id=90

string=1 digits=1, time_on=65435, time_off=30
Jan 7 10:00:25.203: digit=, components=2, freq_of_first=1020,
freq_of_second=1140,
amp_of_first=8192, amp_of_second=8192
Jan 7 10:00:25.303: vtsp_process_dsp_message:
MSG_TX_DTMF_DIGIT_OFF: digit=15, duration=30dc_digit Jan 7 10:00:25.303: csm_vtsp_digit_ready
(vtsp_cdb=0x61B5BFF8) received digit (*) Jan 7 10:00:25.303: CSM voice (1/60): Rcvd Digit
detected(*) Jan 7 10:00:25.303: R2 Incoming Voice(1/60): DSX (E1 0:8): **STATE:R2_IN_COLLECT_DNIS**
R2
Got Event R2_TONE_OFF
Jan 7 10:00:25.303: vtsp_r2_generate_digits: vdev_common=0x6205E5F8,
string=5dc_dial()vtsp_dial_nopush dsp_dtmf_dialing(): dial_string = #
Jan 7 10:00:25.303: dsp_dtmf_dialing: [0:1:8] packet_Len=24 channel_id=4929
packet_id=90 string=# digits=1, time_on=150, time_off=30
Jan 7 10:00:25.303: digit=, components=2, freq_of_first=0, freq_of_second=0,
amp_of_first=1, amp_of_second=1
!--- Second DNIS digit is sent: Forward Signal Group I-6. Jan 7 10:00:25.391:
vtsp_process_dsp_message: **MSG_TX_DTMF_DIGIT_BEGIN: digit=6,**
rtp_timestamp=0x001E0010 dc_digit_up
Jan 7 10:00:25.391: csm_vtsp_digit_ready_up (vtsp_cdb=0x61B5BFF8)
received digit (6)
Jan 7 10:00:25.391: CSM voice (1/60): Rcvd Digit detected(6)
Jan 7 10:00:25.391: R2 Incoming Voice(1/60): DSX (E1 0:8):
STATE:R2_IN_COLLECT_DNIS
R2 Got Event 6
!--- Send Backward Signal Group A-1. Jan 7 10:00:25.391: vtsp_r2_generate_digits:
vdev_common=0x6205E5F8, string=56dc_dial() vtsp_dial_nopush **dsp_dtmf_dialing(): dial_string = 1**
Jan 7 10:00:25.391: dsp_dtmf_dialing: [0:1:8] packet_Len=24
channel_id=4929 packet_id=90
string=1 digits=1, time_on=65435, time_off=30
Jan 7 10:00:25.391: digit=, components=2, freq_of_first=1020,
freq_of_second=1140,
amp_of_first=8192, amp_of_second=8192
Jan 7 10:00:25.491: vtsp_process_dsp_message: MSG_TX_DTMF_DIGIT_OFF:digit=6,
duration=30dc_digit
Jan 7 10:00:25.491: csm_vtsp_digit_ready (vtsp_cdb=0x61B5BFF8) received digit (6)
Jan 7 10:00:25.491: CSM voice (1/60): Rcvd Digit detected(6)
Jan 7 10:00:25.491: R2 Incoming Voice(1/60): DSX (E1 0:8):
STATE: R2_IN_COLLECT_DNIS R2
Got Event R2_TONE_OFF
Jan 7 10:00:25.491: vtsp_r2_generate_digits: vdev_common=0x6205E5F8,
string=56dc_dial() vtsp_dial_nopush dsp_dtmf_dialing(): dial_string = #
Jan 7 10:00:25.491: dsp_dtmf_dialing: [0:1:8] packet_Len=24
channel_id=4929 packet_id=90
string=# digits=1, time_on=150, time_off=30
Jan 7 10:00:25.491: digit=, components=2, freq_of_first=0,
freq_of_second=0,
amp_of_first=1, amp_of_second=1
!--- Third DNIS digit is sent: Forward Signal Group I-7. Jan 7 10:00:25.583:
vtsp_process_dsp_message: **MSG_TX_DTMF_DIGIT_BEGIN: digit=7,**
rtp_timestamp=0x001E0010 dc_digit_up
Jan 7 10:00:25.583: csm_vtsp_digit_ready_up (vtsp_cdb=0x61B5BFF8)
received digit (7)
Jan 7 10:00:25.583: CSM voice (1/60): Rcvd Digit detected(7)
Jan 7 10:00:25.583: R2 Incoming Voice(1/60): DSX (E1 0:8):
STATE:R2_IN_COLLECT_DNIS R2
Got Event 7
!--- Send Backward Signal Group A-1. Jan 7 10:00:25.583: vtsp_r2_generate_digits:
vdev_common=0x6205E5F8, string=567dc_dial()vtsp_dial_nopush **dsp_dtmf_dialing(): dial_string = 1**
Jan 7 10:00:25.583: dsp_dtmf_dialing: [0:1:8] packet_Len=24
channel_id=4929 packet_id=90
string=1 digits=1, time_on=65435, time_off=30

Jan 7 10:00:25.583: digit=, components=2, freq_of_first=1020,
freq_of_second=1140,
amp_of_first=8192, amp_of_second=8192
Jan 7 10:00:25.683: vtsp_process_dsp_message: MSG_TX_DTMF_DIGIT_OFF: digit=7,
duration=30dc_digit
Jan 7 10:00:25.683: csm_vtsp_digit_ready (vtsp_cdb=0x61B5BFF8)
received digit (7)
Jan 7 10:00:25.683: CSM voice (1/60): Rcvd Digit detected(7)
Jan 7 10:00:25.683: R2 Incoming Voice(1/60): DSX (E1 0:8):
STATE:R2_IN_COLLECT_DNIS R2
Got Event R2_TONE_OFF
Jan 7 10:00:25.683: vtsp_r2_generate_digits: vdev_common=0x6205E5F8,
string=567dc_dial()vtsp_dial_nopush dsp_dtmf_dialing(): dial_string = #
Jan 7 10:00:25.683: dsp_dtmf_dialing: [0:1:8] packet_Len=24
channel_id=4929 packet_id=90
string=# digits=1, time_on=150, time_off=30
Jan 7 10:00:25.683: digit=, components=2, freq_of_first=0,
freq_of_second=0,
amp_of_first=1, amp_of_second=1
Jan 7 10:00:25.835: vtsp_process_dsp_message: MSG_TX_DIALING_DONEdc_dialing_done()
!--- Timeout is 3 seconds. Jan 7 10:00:28.583: R2 Incoming Voice(1/60): DSX (E1 0:8):
STATE:R2_IN_COLLECT_DNIS R2
Got Event R2_TONE_TIMER
*!--- Send Backward Signal Group A-3: address-complete, changeover !--- to reception of group-B
signal.* Jan 7 10:00:28.583: vtsp_r2_generate_digits: vdev_common=0x6205E5F8,
string=567dc_dial()vtsp_dial_nopush dsp_dtmf_dialing(): dial_string = 3# Jan 7 10:00:28.583:
dsp_dtmf_dialing: [0:1:8] packet_Len=36
channel_id=4929 packet_id=90
string=3# digits=2, time_on=150, time_off=30
Jan 7 10:00:28.583: digit=, components=2, freq_of_first=1020,
freq_of_second=900,
amp_of_first=8192, amp_of_second=8192
Jan 7 10:00:28.583: digit=, components=2, freq_of_first=0, freq_of_second=0,
amp_of_first=1, amp_of_second=1
!--- Forward Signal Group II-1 is sent: subscriber without priority. Jan 7 10:00:28.831:
vtsp_process_dsp_message: MSG_TX_DTMF_DIGIT_BEGIN: digit=1, rtp_timestamp=0x001E0003 dc_digit_up
Jan 7 10:00:28.831: csm_vtsp_digit_ready_up (vtsp_cdb=0x61B5BFF8) received digit (1) Jan 7
10:00:28.831: CSM voice (1/60): Rcvd Digit detected(1) Jan 7 10:00:28.831: R2 Incoming
Voice(1/60): DSX (E1 0:8): **STATE:R2_IN_CATEGORY R2 Got Event 1**
Jan 7 10:00:28.831: CSM_PROC_IC1_COLLECT_ADDR_INFO:
CSM_EVENT_ADDR_INFO_COLLECTED
(DNIS=567, ANI=123) at slot 1, port 60
Jan 7 10:00:28.831: vtsp_tsp_call_accept_check (sdb=0x61DADEE0,
calling_number=123
called_number=567): peer_tag=0
Jan 7 10:00:28.835: VDEV_ALLOCATE: failed to allocate a device
Jan 7 10:00:28.835: VDEV_ALLOCATE_ALMOST_READY: failed to allocate
a non-idle modem
Jan 7 10:00:28.835: VDEV_ALLOCATE: failed to allocate a device
Jan 7 10:00:28.835: VDEV_ALLOCATE_ALMOST_READY: failed to allocate
a non-idle modem
Jan 7 10:00:28.835: VDEV_ALLOCATE: failed to allocate a device
Jan 7 10:00:28.835: VDEV_ALLOCATE_ALMOST_READY: failed to allocate
a non-idle modem
Jan 7 10:00:28.835: CSM_PROC_IC3_WAIT_FOR_RES_RESP: CSM_EVENT_RESOURCE_OK
at slot 1,
port 60
Jan 7 10:00:28.835: vtsp_IC_switch : (voice_vdev= 0x61F19688)
Jan 7 10:00:28.835: vtsp_tsp_call_switch_ind (cdb=0x61B5BFF8,
tsp_info=0x61F19688,
calling_number=123 called_number=567 redirect_number=):
peer_tag=123dc_switch: fsm_pop()
Jan 7 10:00:28.835: vtsp_do_call_setup_ind
Jan 7 10:00:28.835: vtsp_do_call_setup_ind: Call ID=65581,

```
guid=62031A88
Jan 7 10:00:28.835: vtsp_do_call_setup_ind: type=0, under_spec=0,
name=b`, id0=9,
  id1=0, id2=0, calling=123, called=567
Jan 7 10:00:28.835: dsp_cp_tone_off: [] packet_Len=8 channel_id=4929
packet_id=71
Jan 7 10:00:28.835: dsp_idle_mode: [] packet_Len=8 channel_id=4929
packet_id=68
Jan 7 10:00:28.835: dsp_close_voice_channel: [] packet_Len=8
channel_id=4929 packet_id=75
Jan 7 10:00:28.835: vtsp_timer_stop: 7063006
Jan 7 10:00:28.839: csm_vtsp_call_setup_resp (vdev_info=0x61F19688,
vtsp_cdb=0x61B5BFF8)
Jan 7 10:00:28.839: csm_vtsp_call_setup_resp:vdev_common BP TS
allocatedat BP_stream0,
  BP_Ch8
Jan 7 10:00:28.839: csm_vtsp_call_setup_resp:DST_tdm_chnl call.
  BP TS allocatedat stream 5, chan 13,BP_stream 0, BP_ch 8
Jan 7 10:00:28.839: csm_vtsp_call_setup_resp:DST_tdm_chnl call.
  BP TS allocatedat stream 5, chan 13,BP_stream 0, BP_ch
8vtsp_open_voice_and_set_params
Jan 7 10:00:28.839: dsp_close_voice_channel: [0:1 (17)]
packet_Len=8 channel_id=4929
  packet_id=75
Jan 7 10:00:28.839: dsp_open_voice_channel_20: [0:1 (17)] packet_Len=16
channel_id=4929
  packet_id=74 alaw_ulaw_select=1 associated_signaling_channel=0
time_slot=0 serial_port=0
Jan 7 10:00:28.839: dsp_encap_config_20: [0:1 (17)] packet_Len=24
channel_id=4929
  packet_id=92 TransportProtocol 2 t_ssrc=0x0 r_ssrc=0x0t_vpxcc=0x0
r_vpxcc=0x0
Jan 7 10:00:28.839: dsp_set_playout: [0:1 (17)] packet_Len=18
channel_id=4929 packet_id=76 mode=1 initial=60 min=4 max=200 fax_nom=300
Jan 7 10:00:28.839: dsp_echo_canceller_control: [0:1 (17)]
packet_Len=10 channel_id=4929
  packet_id=66 flags=0x0
Jan 7 10:00:28.839: dsp_set_gains: [0:1 (17)] packet_Len=12
channel_id=4929 packet_id=91
  in_gain=0 out_gain=0
Jan 7 10:00:28.839: dsp_vad_enable: [0:1 (17)] packet_Len=10
channel_id=4929 packet_id=78
  thresh=-38act_proceeding
Jan 7 10:00:28.839: csm_vtsp_call_proceeding:DST_tdm_chnl call.
BP TS allocatedstream 5,
  chan 13,BP_stream 0, BP_ch 8act_alert
Jan 7 10:00:28.867: vtsp_ring_noan_timer_start: 7063009
Jan 7 10:00:28.867: csm_vtsp_call_alert (vtsp_cdb=0x61B5BFF8)
Jan 7 10:00:28.867: csm_vtsp_call_alert: CSM_EVENT_ALERTING_RECEIVED
Jan 7 10:00:28.867: CSM_IC5_WAIT_FOR_SWITCH_OVER: at slot 1, port 60
Jan 7 10:00:28.867: CSM_EVENT_ALERTING_RECEIVED:
Jan 7 10:00:28.867: calling alerting_start_event
!--- Note: For modems, Backward Signal !--- Group B-6 (subscriber's line free, charge) !--- is
sent immediately. !--- For voice, it is delayed until alerting is received. !--- Notice that
"R2_REJECT" is printed instead of R2_ALERTING. !--- This printing issue is solved in Cisco IOS
Software Release 12.1T.

Jan 7 10:00:28.867: R2 Incoming Voice(1/60): DSX (E1 0:8):
STATE:R2_IN_IDLE R2
Got Event R2_REJECT
Jan 7 10:00:28.867: R2_ALERTING: r2_comp_idle
Jan 7 10:00:28.867: vtsp_r2_generate_digits: vdev_common=0x6205E5F8,
string=567act_bridge
Jan 7 10:00:28.867: dsp_voice_mode: [0:1 (17)] packet_Len=24
```

```
channel_id=4929 packet_id=73
coding_type=1 voice_field_size=80 VAD_flag=0 echo_length=64
comfort_noise=1
inband_detect=1 digit_relay=2 AGC_flag=0dsp_dtmf_mode
(VTSP_TONE_R2_MF_FORWARD_MODE)
!--- Answer signal (B-6) is sent after alerting is received. !--- Send Backward Signal Group B6
signal (Subscriber's line free, charge). Jan 7 10:00:28.871: dsp_dtmf_mode: [0:1 (17)]
packet_Len=10 channel_id=4929 packet_id=65 dtmf_or_mf=1vtsp_r2_dial vtsp_r2_dial():
fsm_push(vtsp_r2_state_table) dsp_dtmf_dialing(): dial_string = 6

Jan 7 10:00:28.871: dsp_dtmf_dialing: [0:1 (17)] packet_Len=24
channel_id=4929
packet_id=90 string=6 digits=1, time_on=65435, time_off=30
Jan 7 10:00:28.871: digit=, components=2, freq_of_first=900,
freq_of_second=780,
amp_of_first=8192, amp_of_second=8192
Jan 7 10:00:28.923: vtsp_process_dsp_message: MSG_TX_DTMF_DIGIT_BEGIN: digit=1,
rtp_timestamp=0x001E0006 dc_digit_up
Jan 7 10:00:28.923: csm_vtsp_digit_ready_up (vtsp_cdb=0x61B5BFF8)
received digit (1)
Jan 7 10:00:28.923: CSM voice (1/60): Rcvd Digit detected(1)
Jan 7 10:00:28.923: R2 Incoming Voice(1/60): DSX (E1 0:8):
STATE: R2_IN_COMPLETE
R2 Got Event 1
Jan 7 10:00:28.971: vtsp_process_dsp_message: MSG_TX_DTMF_DIGIT_OFF: digit=1,
duration=30dc_digit
Jan 7 10:00:28.971: csm_vtsp_digit_ready (vtsp_cdb=0x61B5BFF8)
received digit (1)
Jan 7 10:00:28.971: CSM voice (1/60): Rcvd Digit detected(1)
Jan 7 10:00:28.971: R2 Incoming Voice(1/60): DSX (E1 0:8):
STATE: R2_IN_COMPLETE R2
Got Event R2_TONE_OFF
Jan 7 10:00:28.971: vtsp_r2_generate_digits: vdev_common=0x6205E5F8,
string=567dc_dial()
vtsp_dial_nopush dsp_dtmf_dialing(): dial_string = #
Jan 7 10:00:28.971: dsp_dtmf_dialing: [0:1 (17)] packet_Len=24
channel_id=4929
packet_id=90 string=# digits=1, time_on=150, time_off=30
Jan 7 10:00:28.975: digit=, components=2, freq_of_first=0,
freq_of_second=0,
amp_of_first=1, amp_of_second=1ds_dialing_defaultsds_dialing_default
Jan 7 10:00:29.127: vtsp_process_dsp_message:
MSG_TX_DIALING_DONEdc_dialing_done()
Jan 7 10:00:29.971: R2 Incoming Voice(1/60): DSX (E1 0:8):
STATE: R2_IN_WAIT_GUARD R2
Got Event R2_TONE_TIMER
Jan 7 10:00:29.971: R2_IN_IDLE:2 r2_in_connect called
Jan 7 10:00:29.971: R2_IN_CONNECT: call end dial
Jan 7 10:00:29.971: pop the dial state machine
Jan 7 10:00:29.971: vtsp_r2_end_dial: vdev_common=0x6205E5F8,
string=567ds_end_dial():
fsm_pop() act_caps_ind
Jan 7 10:00:29.971: act_caps_ind:Encap 1, Vad 2, Codec 0x4,
CodecBytes 20, FaxRate 2,
FaxBytes 20 SignalType 0 DtmfRelay 1, Modem 1act_caps_ack
Jan 7 10:00:29.971: dsp_idle_mode: [0:1 (17)] packet_Len=8
channel_id=4929 packet_id=68
Jan 7 10:00:29.971: act_caps_ack: codec = 15, ret = 1
Jan 7 10:00:29.971: dsp_cp_tone_off: [0:1 (17)] packet_Len=8
channel_id=4929 packet_id=71
Jan 7 10:00:29.971: dsp_idle_mode: [0:1 (17)] packet_Len=8
channel_id=4929 packet_id=68
Jan 7 10:00:29.971: dsp_encap_config_20: [0:1 (17)] packet_Len=24
channel_id=4929
```



```
packet_id=92 TransportProtocol 2 t_src=0x0 r_src=0x0 t_vpxcc=0x0
r_vpxcc=0x0
Jan 7 10:00:29.971: dsp_voice_mode: [0:1 (17)] packet_Len=24
channel_id=4929 packet_id=73
coding_type=19 voice_field_size=20 VAD_flag=1 echo_length=64
comfort_noise=1
inband_detect=1 digit_relay=2 AGC_flag=0act_alert_connect
Jan 7 10:00:30.255: vtsp_ring_noan_timer_stop: 7063148
Jan 7 10:00:30.255: dsp_cp_tone_off: [0:1 (17)] packet_Len=8
channel_id=4929 packet_id=71
Jan 7 10:00:30.255: csm_vtsp_call_connect (vtsp_cdb=0x61B5BFF8,
voice_vdev=0x61F19688)
Jan 7 10:00:30.255: CSM_IC5_WAIT_FOR_SWITCH_OVER:
CSM_EVENT_MODEM_OFFHOOK at slot 1,
port 60
Jan 7 10:00:30.607: CSM_RX_CAS_EVENT_FROM_NEAT:(0007):
EVENT_CHANNEL_CONNECTED at slot 1
and port 60
Jan 7 10:00:30.607: CSM_PROC_IC6_WAIT_FOR_CONNECT:
CSM_EVENT_DSX0_CONNECTED at slot 1,
port 60
Jan 7 10:00:30.607: from NEAT(0): (0/8): TX ANSWERED (ABCD=0101)
eefje#
```

[Gerelateerde informatie](#)

- [E1 R2-signalering voor Voice-over-IP op Cisco AS5300 toegangsserver](#)
- [E1 R2-signalering voor Cisco 3620 en 3640 Series routers](#)
- [E1 R2-aanpassing met de aangepaste opdracht](#)
- [Configuratie E1 R2- en kanaalgekoppelde signalering](#)
- [E1 R2-signalering voor Cisco AS5300 en Cisco AS5200 toegangsservers](#)
- [Ondersteuning voor spraaktechnologie](#)
- [Productondersteuning voor spraak en Unified Communications](#)
- [Probleemoplossing voor Cisco IP-telefonie](#)
- [Technische ondersteuning en documentatie – Cisco Systems](#)