

E1 Layer 1 Troubleshooting Flowchart

Document ID: 9320

Contents

Introduction

Prerequisites

- Requirements

- Components Used

- Conventions

Flowchart

Related Information

Introduction

This document provides a flowchart you can use to troubleshoot E1 layer 1.

Prerequisites

Requirements

There are no specific requirements for this document.

Components Used

This document is not restricted to specific software and hardware versions.

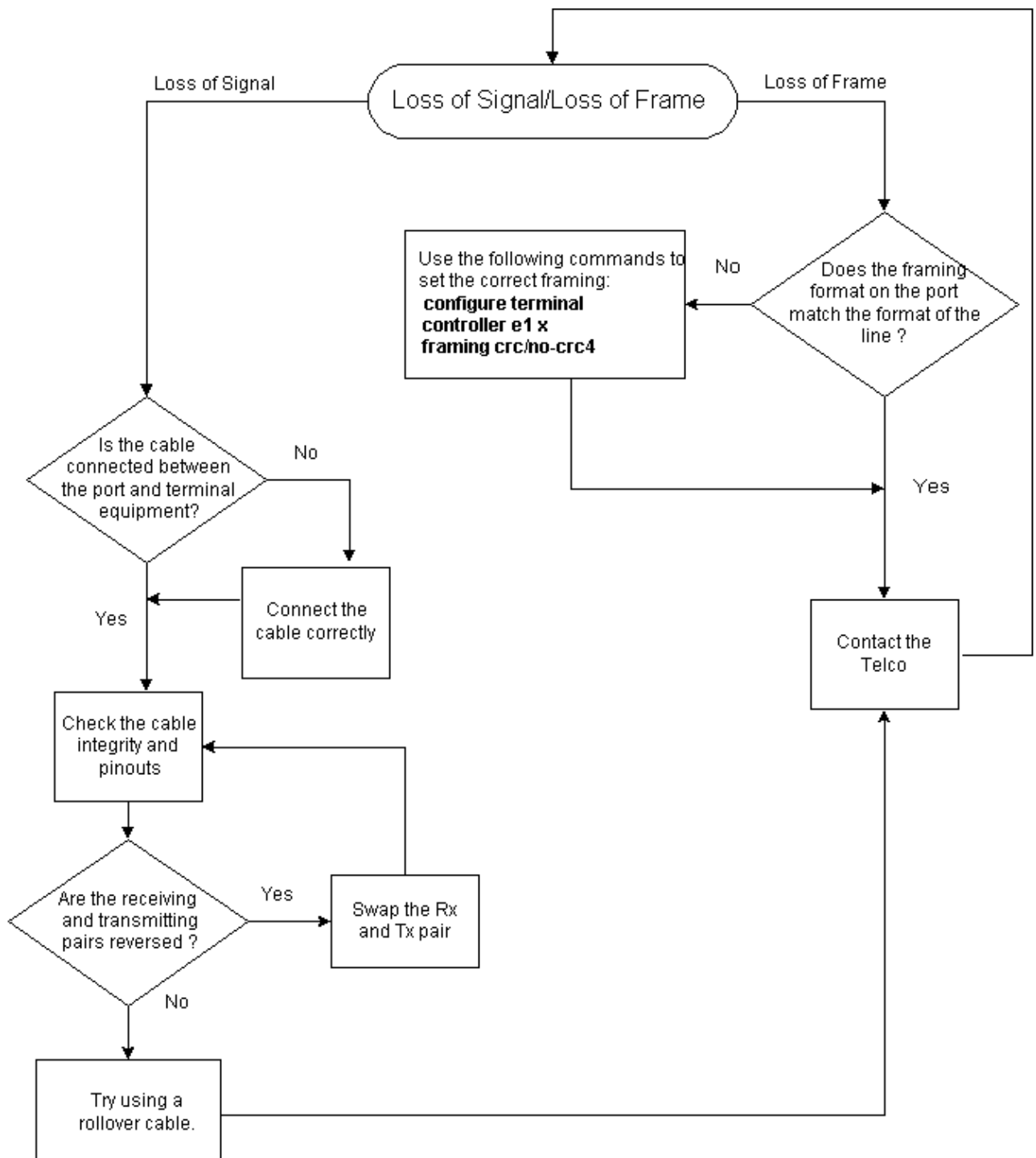
The information in this document was created from the devices in a specific lab environment. All of the devices used in this document started with a cleared (default) configuration. If your network is live, make sure that you understand the potential impact of any command.

Conventions

For more information on document conventions, refer to the Cisco Technical Tips Conventions.

Flowchart

To see more information, click the command boxes.



Related Information

- **E1 Troubleshooting**
- **E1 Alarm Troubleshooting**
- **E1 Error Event Troubleshooting**
- **E1 PRI Troubleshooting**
- **Hard Plug Loopback Test for E1 Lines**
- **Technical Support – Cisco Systems**

