

E1 Alarm Troubleshooting Flowchart

Document ID: 14159

Contents

Introduction

Prerequisites

- Requirements

- Components Used

- Conventions

Flowchart

Related Information

Introduction

To see more information on the alarm indications, refer to E1 Alarm Troubleshooting. Click the information in red to go to the next flow chart.

Prerequisites

Requirements

There are no specific requirements for this document.

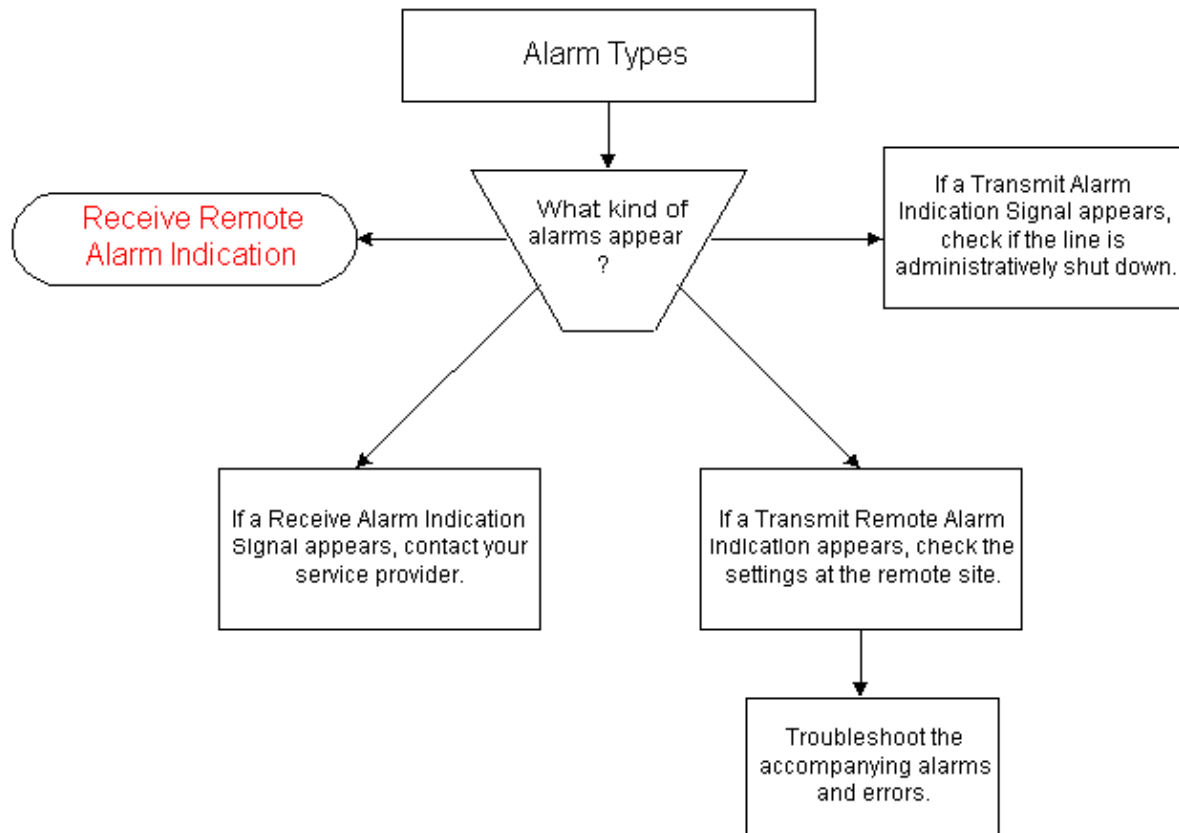
Components Used

This document is not restricted to specific software and hardware versions.

Conventions

For more information on document conventions, refer to the Cisco Technical Tips Conventions.

Flowchart



Related Information

- [E1 Troubleshooting](#)
- [E1 Layer 1 Troubleshooting](#)
- [E1 Error Event Troubleshooting](#)
- [E1 PRI Troubleshooting](#)
- [Hard Plug Loopback Test for E1 Lines](#)
- [Technical Support – Cisco Systems](#)

[Contacts & Feedback](#) | [Help](#) | [Site Map](#)

© 2014 – 2015 Cisco Systems, Inc. All rights reserved. [Terms & Conditions](#) | [Privacy Statement](#) | [Cookie Policy](#) | [Trademarks of Cisco Systems, Inc.](#)

Updated: Sep 09, 2005

Document ID: 14159
