



Cisco Nexus Dashboard Insights Sites, Release 6.3.1 - For Cisco ACI

Table of Contents

New and Changed Information.....	2
Sites	3
About Sites	3
Prerequisites	3
Guidelines and Limitations	4
Add Sites.....	4
Site Details	8
Working with Sites.....	10
Copyright	12

First Published: 2023-09-06

Last Modified: 2024-01-08

Americas Headquarters

Cisco Systems, Inc.
170 West Tasman Drive
San Jose, CA 95134-1706
USA

<http://www.cisco.com>

Tel: 408 526-4000

800 553-NETS (6387)

Fax: 408 527-0883

New and Changed Information

The following table provides an overview of the significant changes up to the current release. The table does not provide an exhaustive list of all changes or the new features up to this release.

Table 1. New Features and Changed Behavior in the Cisco Nexus Dashboard Insights

Feature	Description	Release	Where Documented
Reorganized Content	Content within this document was originally provided in the Cisco Nexus Dashboard Insights User Guide. Starting with release 6.3.1, this content is now provided solely in this document and is no longer provided in the Cisco Nexus Dashboard Insights User Guide.	6.3.1	

This document is available from your Cisco Nexus Dashboard Insights GUI as well as online at www.cisco.com. For the latest version of this document, visit [Cisco Nexus Dashboard Insights Documentation](#).

Sites

About Sites

Sites are on-premises network regions that consist of a group of switches and other networking devices that provide connectivity for your applications and endpoints. You can split sites into different availability zones, such as pods, that are analyzed and managed by Nexus Dashboard Insights.

Types of on-premises sites

- Online sites: Multiple Nexus switches running ACI or NX-OS and represented by a controller such as APIC or NDFC and connected to Nexus Dashboard Insights to continuously stream telemetry. Types of online sites include:
 - ACI: Multiple Nexus switches with Cisco ACI and represented by a Cisco APIC.
 - NDFC: Multiple Nexus switches with Cisco NX-OS and represented by a Cisco NDFC.
- Snapshot sites: Controller-based sites, that are referenced by a snapshot, for use in one-time analysis or demonstrations. They're not connected to Nexus Dashboard Insights over the network.

To learn about how to prepare sites for onboarding, see [Add Sites](#).

Once your site is onboarded and fully prepared, Nexus Dashboard Insights will start the site analysis to collect data from your site and display the site information in the **Sites** page. See [Site Details](#). From there, you can view your site's general information, inventory, L2 and L3 connectivity, endpoints, anomalies and advisories and more! To learn more see [Site Details](#).

Prerequisites

- You have configured DNS on the fabric. See [Configure DNS](#).
- You have configured NTP on the fabric. See [Configure NTP in ACI Fabric Solution](#).
- You have configured in-band management network. See [Cisco APIC and Static Management Access](#)
- You have configured out-of-band management on the controllers and switches. Out-of-band management network is used to stream telemetry.
- You have configured Fabric connectivity in Cisco Nexus Dashboard. See [Cisco Nexus Dashboard Platform Overview](#).
- You have the supported software version for your fabric. See [Nexus Dashboard and Services Compatibility Matrix](#).
- For snapshot sites, you have Python3 installed on your system.

Guidelines and Limitations

When you onboard an ACI site using the **Ready to Add** option in Nexus Dashboard Insights, you cannot specify the **Login Domain** in Nexus Dashboard Insights. You can specify the **Login Domain** in Nexus Dashboard.

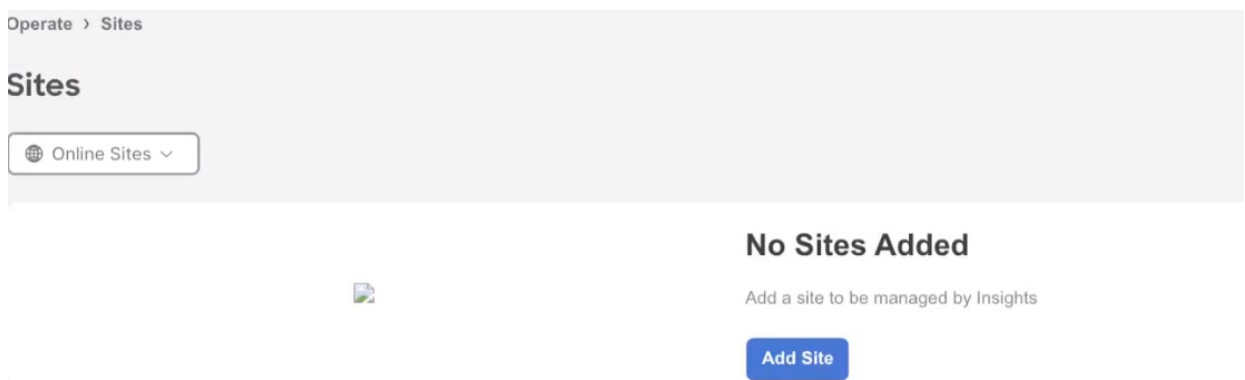
Add Sites

You can add a site to Nexus Dashboard Insights using the following methods:

- Online Sites
 - Enable the site that has already been added to Nexus Dashboard. Sites added to the Nexus Dashboard are not enabled in the services by default, so you will need to explicitly enable them directly from Nexus Dashboard Insights.
 - Add a site to Nexus Dashboard and then enable the site in a single workflow in Nexus Dashboard Insights.
- Snapshot sites
 - Add a snapshot site.

Add an Online Site

1. Navigate to **Operate > Sites**.
2. Click **Add Site**.
 - a. If you are adding a site in Nexus Dashboard Insights for the very first time, you will receive the following message. Click **Add Site** to proceed.



3. To enable a site that has been already added to Nexus Dashboard, select **Ready to Add**. The sites added to Nexus Dashboard are displayed. To add a site to Nexus Dashboard, see [Cisco Nexus Dashboard Sites Management](#).

Operate > Sites

Add site to Insights

- 1 Add Site
- 2 Details
- 3 Configuration
- 4 Summary

Ready To Add
Manually Add
Add Site Snapshot

Ready To Add

We found 2 sites that are already added to Nexus Dashboard but have not yet enabled Insights.

	Name	Type
<input type="radio"/>	candid6-AddFailTest	ACI
<input type="radio"/>	NS2	NDFC

Back
Next

4. Complete the following fields for **Ready to Add**.

- a. Select the site.
- b. Click **Next**.
- c. Select the site location from the map to identify the site on Nexus Dashboard.
- d. Click **Next**.
- e. Select the in-band EPG from the drop-down list. For Nexus Dashboard Insights, in-band EPG is used for connectivity between Nexus Dashboard and the fabric.
- f. Use toggle to select IPv4 or IPv6 to onboard the site. Based on this setting, Nexus Dashboard Insights will configure its collector to receive telemetry from this site. This setting should match your sites IP address configuration.



IPv6 is only supported for Cisco APIC release 6.0(3) and later.

- g. Click **Next**.
 - h. Verify the configuration.
 - i. Click **Submit**.
5. To add a site to Nexus Dashboard and then enable the site using Nexus Dashboard Insights, select **Manually Add**.

Add site to Insights

6. Complete the following fields for **Manually Add**.

- a. In the **Hostname** field, enter the IP address used to communicate with the site's controller.
- b. In the **User Name** and **Password** field, provide the login credentials for a user with **admin** privileges on the site you are adding.
- c. In the **Domain** field, enter the controller login domain name.
- d. Click **Next**.
- e. Enter the site name to identify the site on Nexus Dashboard.
- f. Select the site location from the map to identify the site on Nexus Dashboard.
- g. Click **Next**.
- h. Select the in-band EPG from the drop-down list. For Nexus Dashboard Insights, in-band EPG is used for connectivity between Nexus Dashboard and the fabric.
- i. Use toggle to select IPv4 or IPv6 to onboard the site. Based on this setting, Nexus Dashboard Insights will configure its collector to receive telemetry from this site. This setting should match your sites IP address configuration.



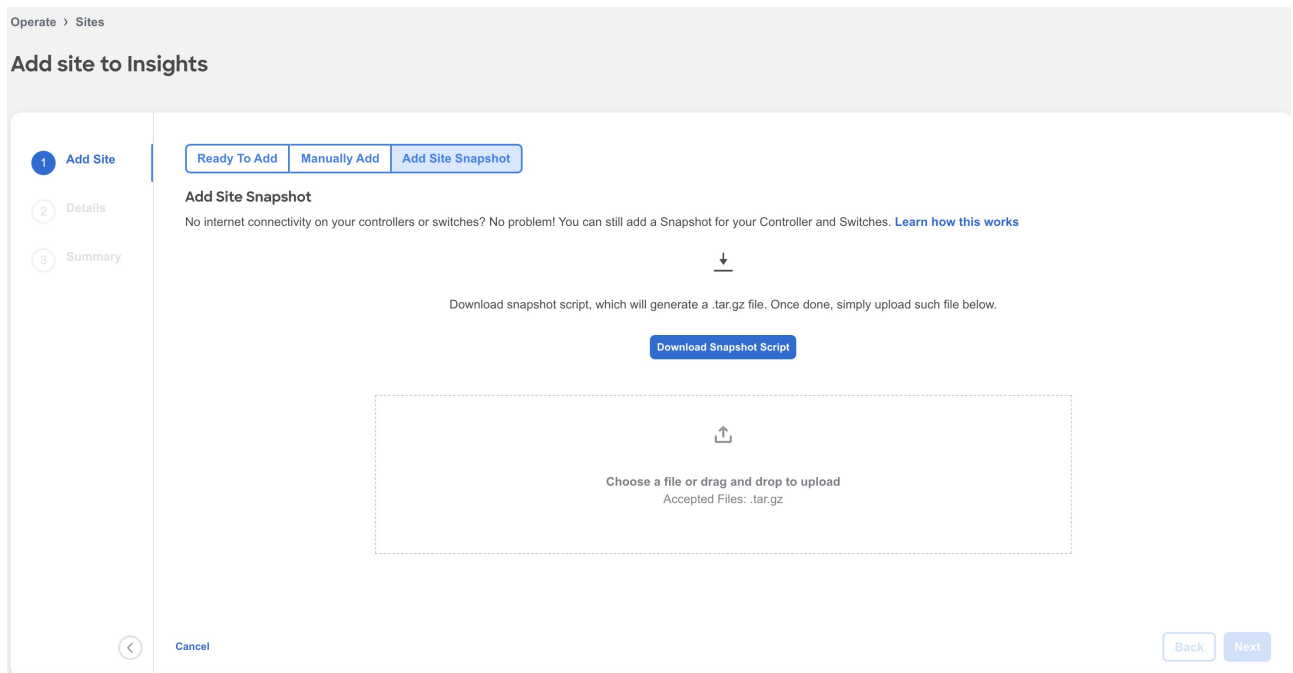
IPv6 is only supported for Cisco APIC release 6.0(3) and later.

- j. Enter the username and password.
- k. Click **Next**.
- l. Verify the configuration.
- m. Click **Submit**.

Add a Snapshot Site

1. Navigate to **Operate > Sites**.
2. Click **Add Site**.

3. To add a snapshot site, select **Add Site Snapshot**.



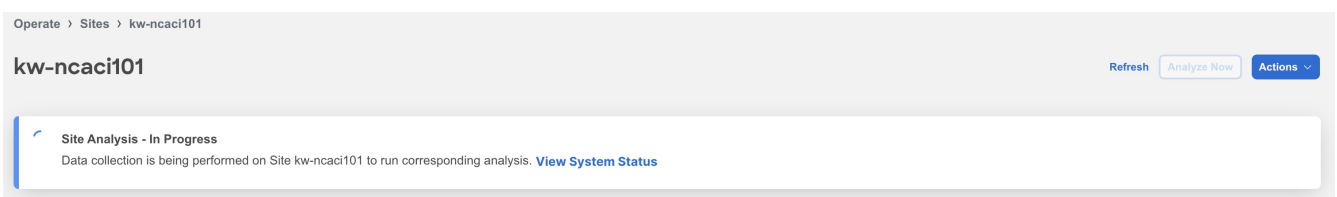
4. Click **Download Snapshot Script** to download the `data-collectors.tar.gz` to your machine.
5. Extract the file you downloaded and run the data collection script. Follow the instructions provided in the `readme.md` file. After the script is completed successfully, the data is collected in a `<filename>.tar.gz` file.



The collection script requires that you have Python3 installed on your system.

6. Upload the file in Nexus Dashboard Insights and click **Next**
7. Enter the site name to identify the site on Nexus Dashboard.
8. Select the site location from the map to identify the site on Nexus Dashboard.
9. Click **Next**.
10. Verify the configuration.
11. Click **Submit**.

Once your site is onboarded and fully prepared, Nexus Dashboard Insights will start the analysis to collect data from your site and display the site information in the **Sites** page. See [Site Details](#). The Site Analysis banner displays the progress of the analysis. The time to run the analysis depends on the size of the fabric.



Site Details

In Nexus Dashboard Insights, **Global View** provides bird's eye view of your global network infrastructure for all your sites. The Sites page provides the details for an individual site.

Site Details in Global View

After you add the first site, **Global View** gives you a bird's eye view of your global network infrastructure for all your sites, their locations, and the key health metrics.

Navigate to **Overview** > **Global View**.

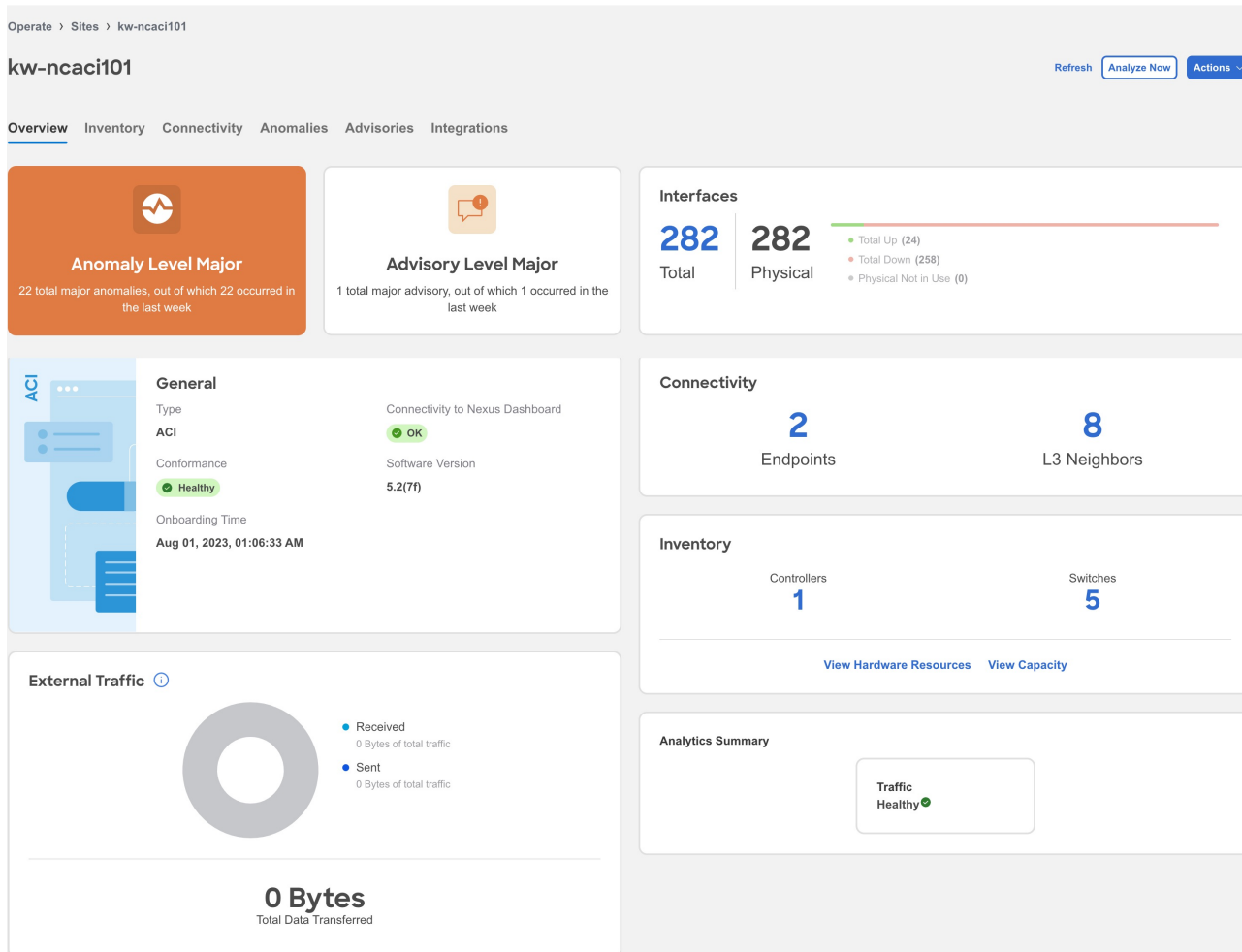
The map visually shows the physical location and total number of your sites in each continent, and their names. Click a site to jump directly to the details for that site, or scroll down to the Sites area to navigate to your site. You can also use the zoom control icons in the page to change your view of the map.

See an at-a-glance summary for each individual site in the Sites area. It includes their anomaly and advisory health levels, site-external traffic with total data transferred, and connectivity data for endpoints and Layer 3 neighbors. To learn about sites in Global View, see [Journey and Global View](#).

Individual Site Details

In the Sites page, you can dive into the details for an individual site, switch, or interface, with a comprehensive dashboard, simple topology, per-device summaries and more. You can also manage anomalies and advisories at a site level.

1. Navigate to **Operate** > **Sites**.
2. Select Online or Snapshot sites from the drop-down list.
3. Use the search bar to filter the sites. The Sites table, displays the site type, connectivity status, anomaly and advisory level, onboarding time.
4. Click the site name to view details for your site.
5. Click **Overview**.



- a. In the The **Anomaly** and **Advisory** area you can view the status of your anomaly and advisory levels, and a list of your top anomaly and advisory categories.
 - i. Click **Anomaly** to view the level, category, and count for your anomalies for the site.
 - ii. Click the anomaly name to view additional details.
 - iii. Click **Advisory** to view the level, category, and count for your advisories for the site.
 - iv. Click the advisory name to view additional details.
- b. The **General** area show you the type of site, the software version used, the connectivity status to Nexus Dashboard, conformance status, and onboarding time.
- c. In the **External Traffic** area, you can see the External Traffic that the site has sent and received in the last 7 days. The donut helps view the how much traffic is sent and received by the site. Click the information icon to view more information about what External Traffic is and how it can be measured for the different types of sites.
- d. In the **Interfaces** area, you can see the summary of the interfaces for the site. Click **Total** to view additional details such as Anomaly Level, Admin Status, Operational Status, and Interface Type. Click the interface name to view additional details.
- e. In the **Connectivity** area, you can view details about your endpoints, and L3 neighbors.
- f. In the **Inventory** area, you can view the summary of the controllers and switches for the site.
 - i. Click **View Hardware Resources** to view the hardware resources for the site. Click and choose a resource from the **Top Devices By** drop-down list to see a graph for that

resource. In the table that follows, see the resource usage by switch. Click the switch name to view additional details.

- ii. Click **View Capacity** to view the different resources with their maximum capacity and current usage. Site Summary shows you the trends for the week, as well as the capacity by resource for the entire fabric. You see the number of resources used out of the total available capacity for each resource in this site (for example, Bridge Domains 2829 of 15000). The percentage indicates the percentage of resource used. The Switch Summary displays the capacity breakout of resources by switch. The graph shows you the timeline for the parameter that you have selected from the **Top Switches By** drop-down list. In the table, click Operational Resources, Configuration Resources, or Hardware Resources, to see the capacity and usage for each switch in the site.
- g. In the **Analytics Summary** area, you can view the summary of Traffic Analytics. You can visualize this information if you have enabled Traffic Analytics in **Flow Collection**.
6. Click **Inventory** to view the the controllers and switches information for the site. To learn more, see [Inventory](#).
7. Click **Connectivity** to view the details of interfaces, endpoints, L3 neighbors, vPC Domains, flows for the site. To learn more, see [Inventory](#).
8. Click **Anomalies** to view all the anomalies for the site. To learn more, see [Anomalies and Advisories](#).
9. Click **Advisories** to view all the advisories for the site. To learn more, see [Anomalies and Advisories](#).
10. Click **Integrations** to view all the integrations associated with the site. To learn more, see [Integrations](#).
11. Click **File History** to view he history of files that are attached to the snapshot site. It shows the file name, the file size, when the file was uploaded, upload status, and when the last analysis was run.



File History is displayed only for snapshot sites.

- a. For the currently active snapshot, which is the latest file that you uploaded, you can click **Run Analysis** to run the same snapshot analysis again. This can be useful when additional features are added and you want to re-run an analysis so that the additional features are included in your analysis.
- b. You can also upload a snapshot file for the same site at a different time interval. Click **Upload File** to upload the file and then click **Run Analysis** to run the snapshot analysis.

Working with Sites

1. Navigate to **Operate > Sites**.
2. To add a site, click **Add Site**. See [Add Sites](#).
3. Select Online or Snapshot sites from the drop-down list.
4. Click the site name to view the Site Details.

Operate > Sites > kw-ncaci101

kw-ncaci101

Refresh Analyze Now Actions ^

Overview Inventory Connectivity Anomalies Advisories Integrations

Anomaly Level Major

22 total major anomalies, out of which 22 occurred in the last week

Advisory Level Major

1 total major advisory, out of which 1 occurred in the last week

Interfaces

282	282
Total	Physical

- Total Up (24)
- Total Down (258)
- Physical Not in Use (0)

Edit Site

View in Topology

System Status

Pause Telemetry Collection

5. From the Actions drop-down menu, select **Edit Site** to edit the site details. After you update the information, click **Save**.
6. From the Actions drop-down menu, select **View in Topology** to view the topology for the site.
7. From the Actions drop-down menu, select **System Status** to view the status of the data analysis for your site. See [Getting Started](#).
8. To delete a site from Nexus Dashboard Insights, perform the following steps:
 - a. From the Actions drop-down menu, select **Pause Telemetry Collection** to pause data collection.
 - b. From the Actions drop-down menu, select **Remove from Insights** to remove the site. The site is removed from Nexus Dashboard Insights only and not from Nexus Dashboard.
9. From the Actions drop-down menu, select **Resume Telemetry Collection** to resume data collection.
10. Click **Analyze Now** to perform an on-demand analysis. Select the service such as Assurance or Bug Scan and click **Run Now**. See [Getting Started](#).

Copyright

THE SPECIFICATIONS AND INFORMATION REGARDING THE PRODUCTS IN THIS MANUAL ARE SUBJECT TO CHANGE WITHOUT NOTICE. ALL STATEMENTS, INFORMATION, AND RECOMMENDATIONS IN THIS MANUAL ARE BELIEVED TO BE ACCURATE BUT ARE PRESENTED WITHOUT WARRANTY OF ANY KIND, EXPRESS OR IMPLIED. USERS MUST TAKE FULL RESPONSIBILITY FOR THEIR APPLICATION OF ANY PRODUCTS.

THE SOFTWARE LICENSE AND LIMITED WARRANTY FOR THE ACCOMPANYING PRODUCT ARE SET FORTH IN THE INFORMATION PACKET THAT SHIPPED WITH THE PRODUCT AND ARE INCORPORATED HEREIN BY THIS REFERENCE. IF YOU ARE UNABLE TO LOCATE THE SOFTWARE LICENSE OR LIMITED WARRANTY, CONTACT YOUR CISCO REPRESENTATIVE FOR A COPY.

The Cisco implementation of TCP header compression is an adaptation of a program developed by the University of California, Berkeley (UCB) as part of UCB's public domain version of the UNIX operating system. All rights reserved. Copyright © 1981, Regents of the University of California.

NOTWITHSTANDING ANY OTHER WARRANTY HEREIN, ALL DOCUMENT FILES AND SOFTWARE OF THESE SUPPLIERS ARE PROVIDED "AS IS" WITH ALL FAULTS. CISCO AND THE ABOVE-NAMED SUPPLIERS DISCLAIM ALL WARRANTIES, EXPRESSED OR IMPLIED, INCLUDING, WITHOUT LIMITATION, THOSE OF MERCHANTABILITY, FITNESS FOR A PARTICULAR PURPOSE AND NONINFRINGEMENT OR ARISING FROM A COURSE OF DEALING, USAGE, OR TRADE PRACTICE.

IN NO EVENT SHALL CISCO OR ITS SUPPLIERS BE LIABLE FOR ANY INDIRECT, SPECIAL, CONSEQUENTIAL, OR INCIDENTAL DAMAGES, INCLUDING, WITHOUT LIMITATION, LOST PROFITS OR LOSS OR DAMAGE TO DATA ARISING OUT OF THE USE OR INABILITY TO USE THIS MANUAL, EVEN IF CISCO OR ITS SUPPLIERS HAVE BEEN ADVISED OF THE POSSIBILITY OF SUCH DAMAGES.

Any Internet Protocol (IP) addresses and phone numbers used in this document are not intended to be actual addresses and phone numbers. Any examples, command display output, network topology diagrams, and other figures included in the document are shown for illustrative purposes only. Any use of actual IP addresses or phone numbers in illustrative content is unintentional and coincidental.

The documentation set for this product strives to use bias-free language. For the purposes of this documentation set, bias-free is defined as language that does not imply discrimination based on age, disability, gender, racial identity, ethnic identity, sexual orientation, socioeconomic status, and intersectionality. Exceptions may be present in the documentation due to language that is hardcoded in the user interfaces of the product software, language used based on RFP documentation, or language that is used by a referenced third-party product.

Cisco and the Cisco logo are trademarks or registered trademarks of Cisco and/or its affiliates in the U.S. and other countries. To view a list of Cisco trademarks, go to this URL: <http://www.cisco.com/go/trademarks>. Third-party trademarks mentioned are the property of their respective owners. The use of the word partner does not imply a partnership relationship between Cisco and any other company. (1110R)

© 2017-2024 Cisco Systems, Inc. All rights reserved.