

Leviton Cabling Guide for Cisco 100G and 400G Optics



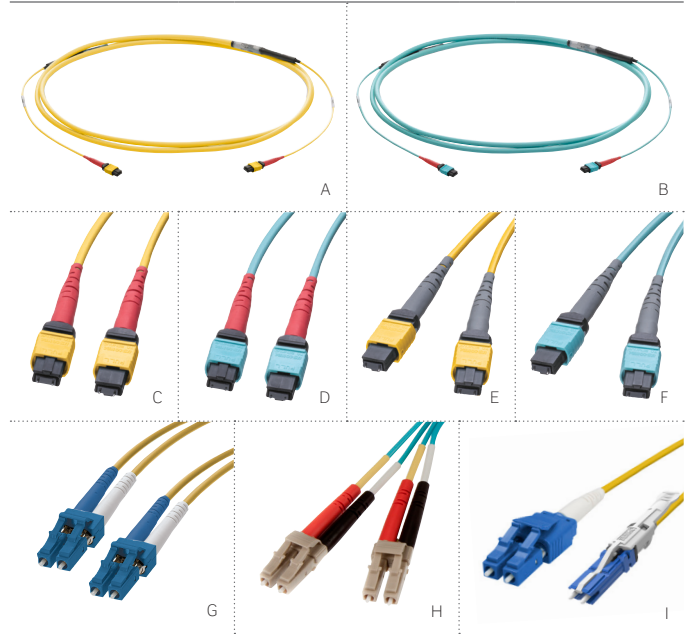
| 100G QSFP28 MODULES | | | | | | | | | |
|----------------------|-------|---------------------|------------------------------|---|---|--|---------------------|--------------------------------|-----------------------------|
| Cisco P/N | Media | Connector Interface | Breakout | Leviton Near End Cassette P/N | Leviton Far End Cassette P/N | Leviton Far End Breakout Cassette P/N | Breakout Lane Speed | HDX Example (Near End/Far End) | HDX Example (Breakout Side) |
| QSFP-100G-SR4-S | MM | MPO12 | Yes (4x25G-SR) | HDX: 42NM2-S5C e2XHD: ULE2XHD-F024NHKDS5 | HDX: 42NM2-S5C e2XHD: ULE2XHD-F024NHKDS5 | HDX: 42LM2-21C e2XHD: ULE2XHD-F024CHQDS4 | 25G | | |
| QSFP-40/100G-SRBD | MM | LC | No | HDX: 42LM2-21C e2XHD: ULE2XHD-F024CHQES4 | HDX: 42LM2-21C e2XHD: ULE2XHD-F024CHQES4 | N/A | N/A | | N/A |
| QSFP-100G-PSM4-S | SM | MPO12 | Yes (4x25G-LR) | HDX: U2NM2-S5C e2XHD: ULE2XHD-A024NHKDS5 | HDX: U2NM2-S5C e2XHD: ULE2XHD-A024NHKDS5 | HDX: U2LM2-21C e2XHD: ULE2XHD-A024CHLES4 | 25G | | |
| QSFP-100G-SM-SR | SM | LC | No | HDX: U2LM2-21C e2XHD: ULE2XHD-A024CHLES4 | HDX: U2LM2-21C e2XHD: ULE2XHD-A024CHLES4 | N/A | N/A | | N/A |
| QSFP-100G-CWDM4-S | SM | LC | No | HDX: U2LM2-21C e2XHD: ULE2XHD-A024CHLES4 | HDX: U2LM2-21C e2XHD: ULE2XHD-A024CHLES4 | N/A | N/A | | N/A |
| 400G QSFP-DD MODULES | | | | | | | | | |
| Cisco P/N | Media | Connector Interface | Breakout | Leviton Near End Side Cassette P/N | Leviton Far End Cassette P/N | Leviton Far End Breakout Side Cassette P/N | Breakout Lane Speed | HDX Example (Near End/Far End) | HDX Example (Breakout Side) |
| QDD-400G-SR4-BD | MM | MPO12 | Yes (4x40/100G-SRBD) | HDX: 5FUHD-6MB e2XHD: E2XHD-4MB | HDX: 5FUHD-6MP e2XHD: E2XHD-4MP | HDX: 42LM2-21C e2XHD: ULE2XHD-F024CHQDS4 | 100G | | |
| QDD-400G-DR4-S | SM | MPO12 | Yes (4x100G-DR) | HDX: U2NM2-S5C e2XHD: ULE2XHD-A024NHKDS5 | HDX: U2NM2-S5C e2XHD: ULE2XHD-A024NHKDS5 | HDX: U2LM2-21C e2XHD: ULE2XHD-A024CHLES4 | 100G | | |
| QDD-4X100G-FR-S | SM | MPO12 | Yes (4x100G-FR) | HDX: U2NM2-S5C e2XHD: ULE2XHD-A024NHKDS5 | HDX: U2NM2-S5C e2XHD: ULE2XHD-A024NHKDS5 | HDX: U2LM2-21C e2XHD: ULE2XHD-A024CHLES4 | 100G | | |
| QDD-400G-FR4-S | SM | LC | No | HDX: U2LM2-21C e2XHD: ULE2XHD-A024CHLES4 | HDX: U2LM2-21C e2XHD: ULE2XHD-A024CHLES4 | N/A | N/A | | N/A |
| QDD-2x100-SR4-S | MM | MPO24 | Yes (8x25G-SR or 2x100G-SR4) | HDX: 5FUHD-6MB e2XHD: E2XHD-4MB | N/A | HDX: 42LM2-400C e2XHD: ULE2XHD-F024CHQDS9 | 25G or 100G | | |
| QDD-4X100G-LR-S | SM | MPO12 | Yes (4x100G-LR) | HDX: U2NM2-S5C e2XHD: ULE2XHD-A024NHKDS5 | N/A | HDX: U2LM2-21C e2XHD: ULE2XHD-A024CHLES4 | 100G | | |
| QDD-2x100-CWDM4-S | SM | 2 x CS | Yes (2x100G-CWDM4) | HDX: U2LM2-21C e2XHD: ULE2XHD-A024CHQES4 | HDX: U2LM2-21C e2XHD: ULE2XHD-A024CHQES4 | HDX: U2LM2-21C e2XHD: ULE2XHD-A024CHQES4 | 100G | | |

Note: Above does not include Long Reach and Extended Reach Modules (LR4, ER4)

Leviton Cabling Guide for Cisco 100G and 400G Optics

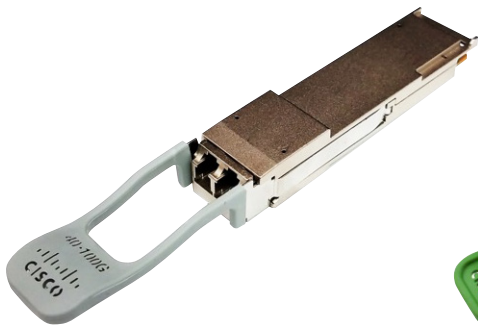


| BASIC CABLING COMPONENTS | | |
|--------------------------|------------------------------|-----|
| Description | Leviton P/N | |
| 24F MTP-MTP Trunk, SM | FTU-AW4024JJxxxF36C36CN-NNBS | [A] |
| 24F MTP-MTP trunk, OM4 | FTU-FW4024JJxxxF36C36CN-NNBS | [B] |
| 24F Array cord, SM | ULUP4JJ-B0xxF | [C] |
| 24F Array cord, OM4 | 544JJ-B0xxF | [D] |
| 8F Array cord, SM | UP8MM-B0xxF | [E] |
| 8F Array cord, OM4 | 548MM-B0xxF | [F] |
| LC-LC Patch Cord, SM | PCF-S2PD1RR-xxxxMAB | [G] |
| LC-LC Patch Cord, OM4 | PCF-M4PD1RR-xxxxMAB | [H] |
| CS - LC Patch Cord, SM | FPC-S2PR2VJ-yyyMAB | [I] |



xx = Length in feet (Ex. "50" is 50Ft overall length)
 xxx = Length in feet (Ex. "050 is 50Ft overall length)
 xxxx = Length in feet (Ex. "0500 is 50Ft in overall length, "0505" is 50.5Ft in overall length)
 yyy = Length in meters: 1 (001), 2 (002), 3 (003), 5 (005), 10 (010)
 Trunk Fiber Count: replace "024" in part number with 012, 048, 096, or 144

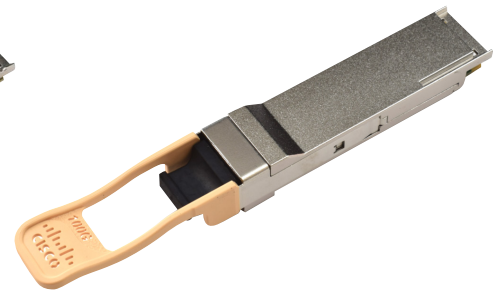
CISCO TRANSCEIVER EXAMPLES



QSFP-40/100-SRBD



QSFP-100G-CWDM4-S



QSFP-100G-SR4-S