

ISE و PEAP مادختساب 802.1X ةقداصم نيوكت 2.1 و WLC 8.3

تايوتحمل

[ةمدقملا](#)

[ةيساسالابابلطتملا](#)

[تابلطتملا](#)

[ةمدختسملا تانوكملا](#)

[ةيساسا تامولعم](#)

[نيوكتلا](#)

[ةكبشليليطيختلا مسرلا](#)

[نيوكتلا](#)

[WLC ىلع RADIUS مداختنالعا](#)

[SSID عاشنا](#)

[ISE ىلع WLC نالعا](#)

[ISE ىلع ديجمدختسم عاشنا](#)

[ةقداصم ةدعاق عاشنا](#)

[ضيوفتلا فيرعت فلم عاشنا](#)

[ليوخت ةدعاق عاشنا](#)

[يفرطللا زاهجلا نيوكت](#)

[ايتاذ ةدعوقوملا ISE ةداهش تيبثت - زاهجلا نيوكت اهان](#)

[WLAN فيرعت فلم عاشنا - زاهجلا نيوكت اهان](#)

[ةحصلا نم ققحتلا](#)

[WLC ىلع ةقداصملا ةيلمع](#)

[ISE ىلع ةقداصملا ةيلمع](#)

[اهجالصاو اعاطخال فاشكتسا](#)

ةمدقملا

802.1x Security and Virtual Local Area Network (VLAN) ةيكلسال ةيلحم ةكبش دادعإ ةيفي ك دنتسملا اذه حضوي

ةيساسالابابلطتملا

تابلطتملا

ةيلاتلا عيضاوملاب ةفرعم كي دل نوكت نأ Cisco ي صوت:

- 802,1x
- (PEAP) يمحمللا عسوتملا ةقداصملا لوكوتورب
- (CA) تاداهشلا ةئيه
- تاداهشلا

نيوكتلا

يه عمال تاوطلالو:

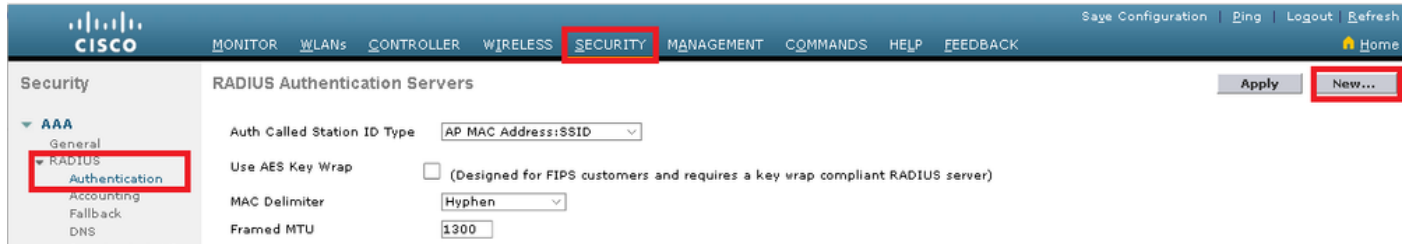
1. (WLC) ةيكلسالل ةيلحمل ةكبشلا في مكحتل رصنع لىل رADIUS مداخل راهظا.
ضعبلا اهضعب لاصلتالاب حامسلل سكلعلاو
2. ةيلحمل ةكبشلا في مكحتل رصنع في (SSID) ةمدخل ةومجم فرعم عاشناب مق (WLC) ةيكلسالل.
3. ISE لىل ةقداصلملا ةدعاق عاشناب مق.
4. ISE لىل ليوختل فيرعت فلم عاشناب مق.
5. ISE لىل ليوختل ةدعاق عاشناب مق.
6. ةياهنلا ةطقن نيوكتب مق.

WLC لىل رADIUS مداخل

WLC لىل رADIUS مداخل ليحست كمزلي، WLC مداخل و RADIUS مداخل ني لاصلتالاب حامسلل سكلعلاو.

GUI:

ةكبشلا في مكحتل ةدحوب ةصاخلا (GUI) ةيوسرلا مداخل مداخل ةهجاوحتفا 1. ةوطلال اماك ديديج > ةقداصلملا > RADIUS > نامالا لىل لوصولل حفصتو (WLC) ةيكلسالل ةيلحمل ةروصلال في حضورم وه.



ةروصلال في حضورم وه اماك RADIUS مداخل تامولعم لاداب مق 2. ةوطلال

RADIUS Authentication Servers > New

Server Index (Priority)

Server IP Address(Ipv4/Ipv6)

Shared Secret Format

Shared Secret

Confirm Shared Secret

Key Wrap (Designed for FIPS customers and requires a key wrap compliant RADIUS server)

Port Number

Server Status

Support for CoA

Server Timeout seconds

Network User Enable

Management Enable

Management Retransmit Timeout seconds

IPSec Enable

CLI:

- > config radius auth add <index> <a.b.c.d> 1812 ascii <shared-key>
- > config radius auth disable <index>
- > config radius auth retransmit-timeout <index> <timeout-seconds>
- > config radius auth enable <index>

<a.b.c.d> مداخل لثامي RADIUS.

اشن SSID

GUI:

ةكبشلا يف مكحتلا ةدحوب ةصاخلا (GUI) ةيموسرلا مدختسمل ةهجاوحتفا 1. ةوطخلا حضورم وه امك لاقتنا > ديدج ءاشن | WLAN تاكبش ىل لاقتناو (WLC) ةيكلساللا ةيلحمل ةروصللا يف.

CISCO MONITOR **WLANs** CONTROLLER WIRELESS SECURITY MANAGEMENT COMMANDS HELP FEEDBACK

WLANs

WLANs

Current Filter: None [Change Filter] [Clear Filter]

ةروصللا يف حضورم وه امك قيبطت ىل عرقنا مث SSID في صوتل مسارتخأ 2. ةوطخلا

WLANs > New

Type	<input type="text" value="WLAN"/>
Profile Name	<input type="text" value="profile-name"/>
SSID	<input type="text" value="SSID-name"/>
ID	<input type="text" value="2"/>

CLI:

```
> config wlan create <id> <profile-name> <ssid-name>
```

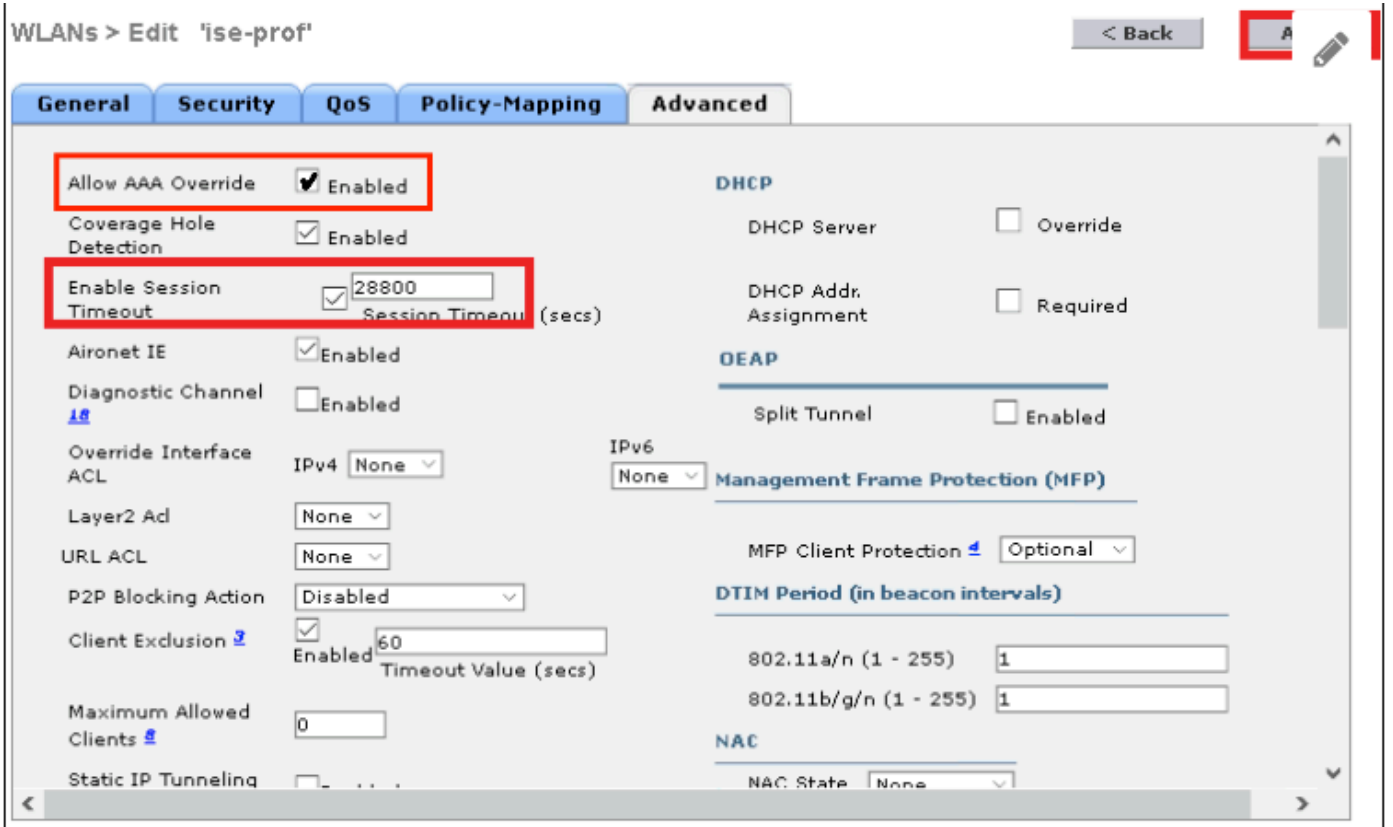
WLAN ةكبش ىل رADIUS م داخ نيي عت ب مق 3 ةوطخ ل

CLI:

```
> config wlan radius_server auth add <wlan-id> <radius-index>
```

GUI:

وه امك قي ب طت طغضا م ث ، بول طم ل رADIUS م داخ رتخ او AAA م داخ > ني م أت ل لى ل لقت نا ةروصل لى ف حضوم .



WLAN تاشي نيكمتب مق 5 ةوطخل

CLI:

```
> config wlan enable <wlan-id>
```

GUI:

يف حضورم وه امك SSID نيكمتب مقوماع > WLAN ةكباش فرعم > WLAN تاشي نيكمتب مق 5 ةوطخل

WLANs > Edit 'ise-prof' < Back Apply

General Security QoS Policy-Mapping Advanced

Profile Name: ise-prof
 Type: WLAN
 SSID: ise-ssid
Status: Enabled

Security Policies: [WPA2][Auth(802.1X)]
 (Modifications done under security tab will appear after applying the changes.)

Radio Policy: All
 Interface/Interface Group(G): management
 Multicast Vlan Feature: Enabled
 Broadcast SSID: Enabled
 NAS-ID: none

إلى ISE على WLC نالغ

ةفاضل > ةكبشلا ةزهج > ةكبشلا دراوم > ةرادإلا إلى لإ لقتناو ISE مكحت ةدحوحتفا 1. ةوطخل ةروصللا يف حضوم وه امك

Identity Services Engine Home Context Visibility Operations Policy Administration Work

System Identity Management Network Resources Device Portal Management pxGrid Services Feed Service

Network Devices Network Device Groups Network Device Profiles External RADIUS Servers RADIUS Server Sequences

Network devices Network Devices

Default Device

Edit + Add Duplicate Import Export Generate PAC Delete

م.يقل لاخدا ب مق 2. ةوطخل

تاعومجم نييعتو فصو وأ جم انرب رادصل وأ ددحم زارط مسا نوكي نأ نكمي، يرايتخ لإ لكشبو ةيلحمل ةكبشلا يف مكحتلا تاودأ وأ عقوملا وأ ةزهجالا عاونأ إلى ادانتسا ةكبشلا ةزهجأ (WLC) ةيكلساللا

يه نوكت، يضا رتفا لكشبو. ةبولطملا ةقداصلما لسرت يتللا WLC ةهجاو عم a.b.c.d قفاوتي ةروصللا يف حضوم وه امك ةرادإلا ةهجاو

Network Devices

* Name

Description

* IP Address: /

* Device Profile

Model Name

Software Version

* Network Device Group

Device Type

Location

WLCs

RADIUS Authentication Settings

Enable Authentication Settings

Protocol **RADIUS**

* Shared Secret

Enable KeyWrap

* Key Encryption Key

* Message Authenticator Code Key

Key Input Format ASCII HEXADECIMAL

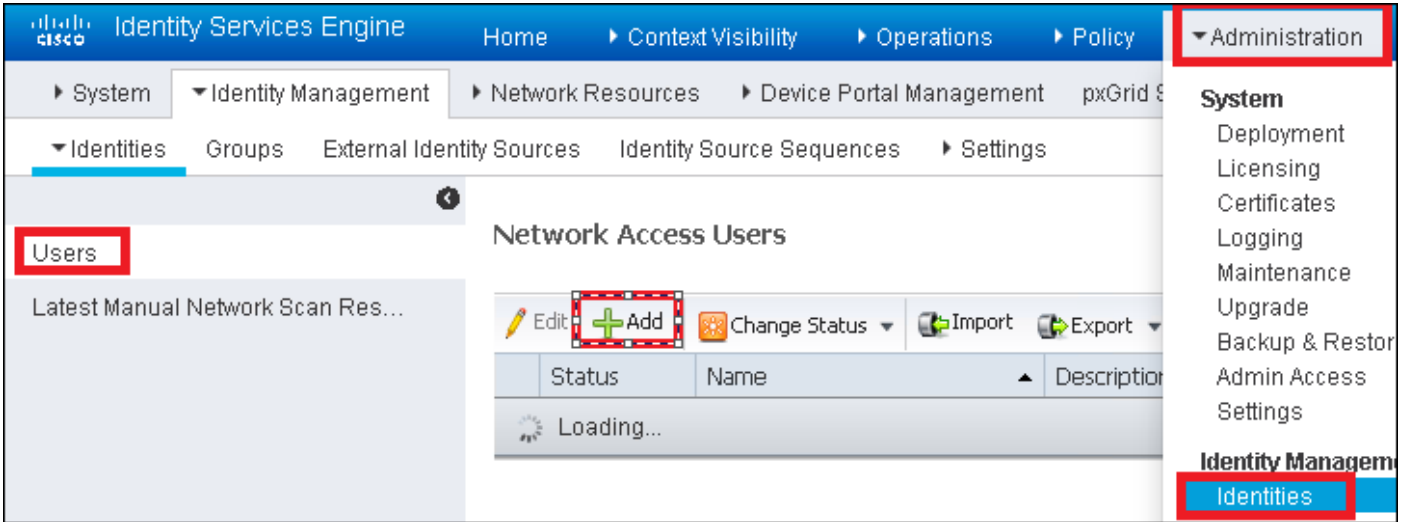
CoA Port

قبة بشلا ؤزهأ تاعومجم لوح تامولعملما نم ديزم ىلع لوصحلل

[قبة بشلا ؤزهأ تاعومجم - ISE](#)

ISE ديدج مدختسم عاشن

يف حضورم وه امك ةفاضل > نيمدختسم > تاويه > ةيوهلا ةرادا > ةرادا لىل لقتنا 1. ةوطخلال ةروصلال



تامولعملال لخدأ 2. ةوطخلال

هطبض نكمي نكلو، all_accounts، ستمست ةومجم لىل مدختسملا اذه يمتني، لاثملا اذه يف ةروصلال يف حضورم وه امك، ةجالحال بسح

▼ Network Access User

* Name

Status Enabled ▼

Email

▼ Passwords

Password Type: ▼

Password

Re-Enter Password

* Login Password

●●●●●●●●

●●●●●●●●

Enable Password

▼ User Information

First Name

Last Name

▼ Account Options

Description

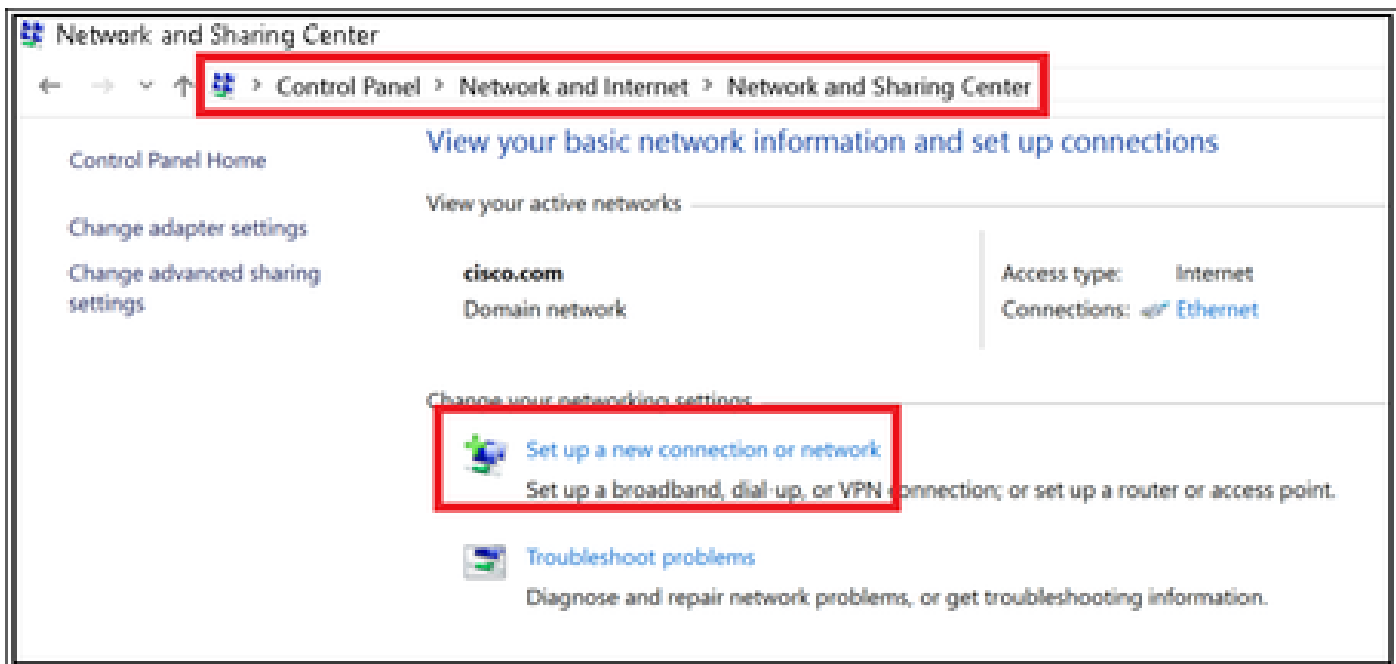
Change password on next login

▼ Account Disable Policy

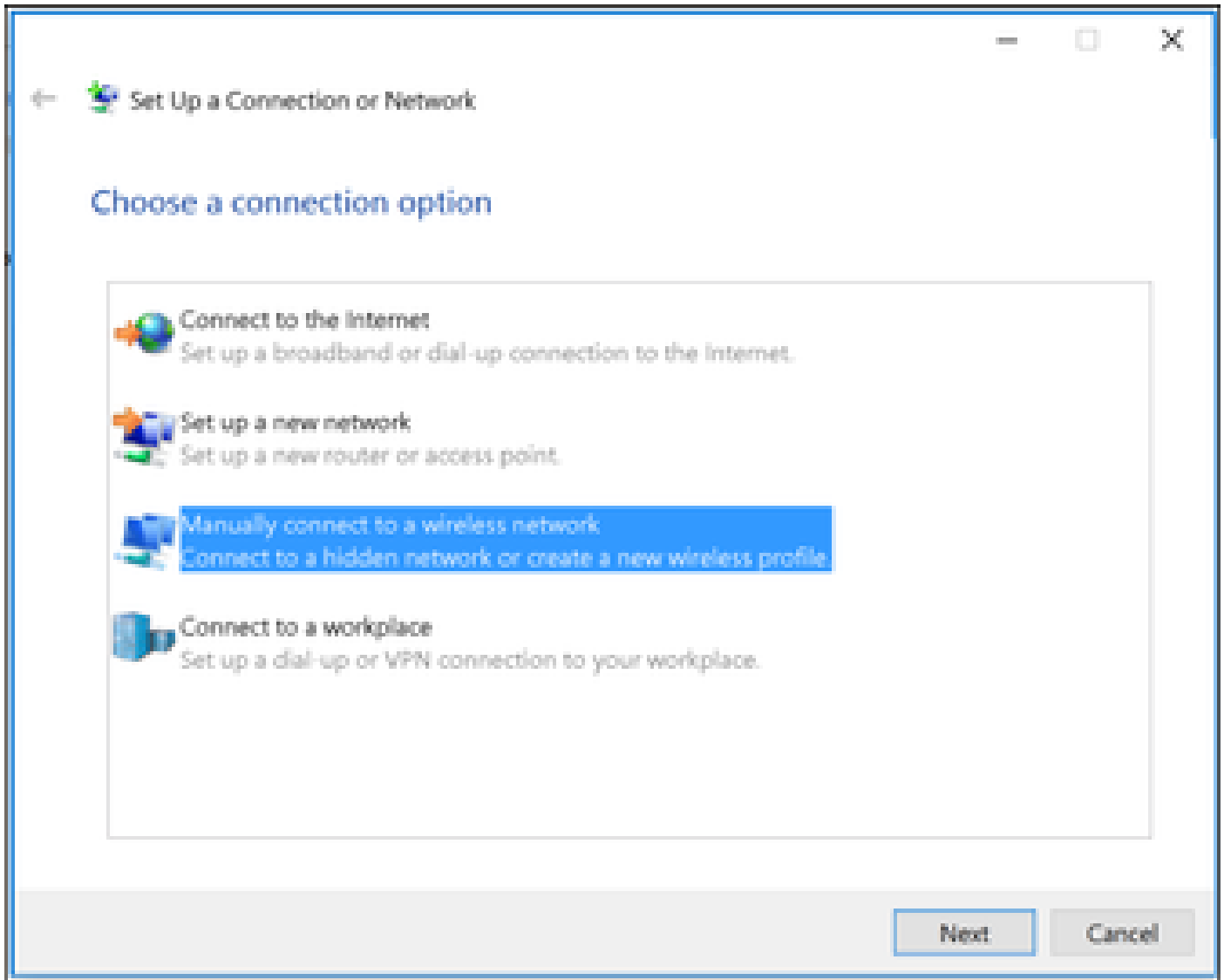
Disable account if date exceeds

2017-01-21


▼ User Groups



يفترضون وهامك يلات اللى عرقنا م، ةكلسال ةكبش بايوي لى صوت ال دح. 3 ةوطخ ال ةروصل.



وهو يمكنك الاتصال برقمنا و WPA2-Enterprise نيم أتلأ عونو SSID م سباب تامول عمال لخدأ. 4 ة وطلخال ةروصلال يف حضورم.

←  Manually connect to a wireless network

Enter information for the wireless network you want to add

Network name:

Security type:

Encryption type:

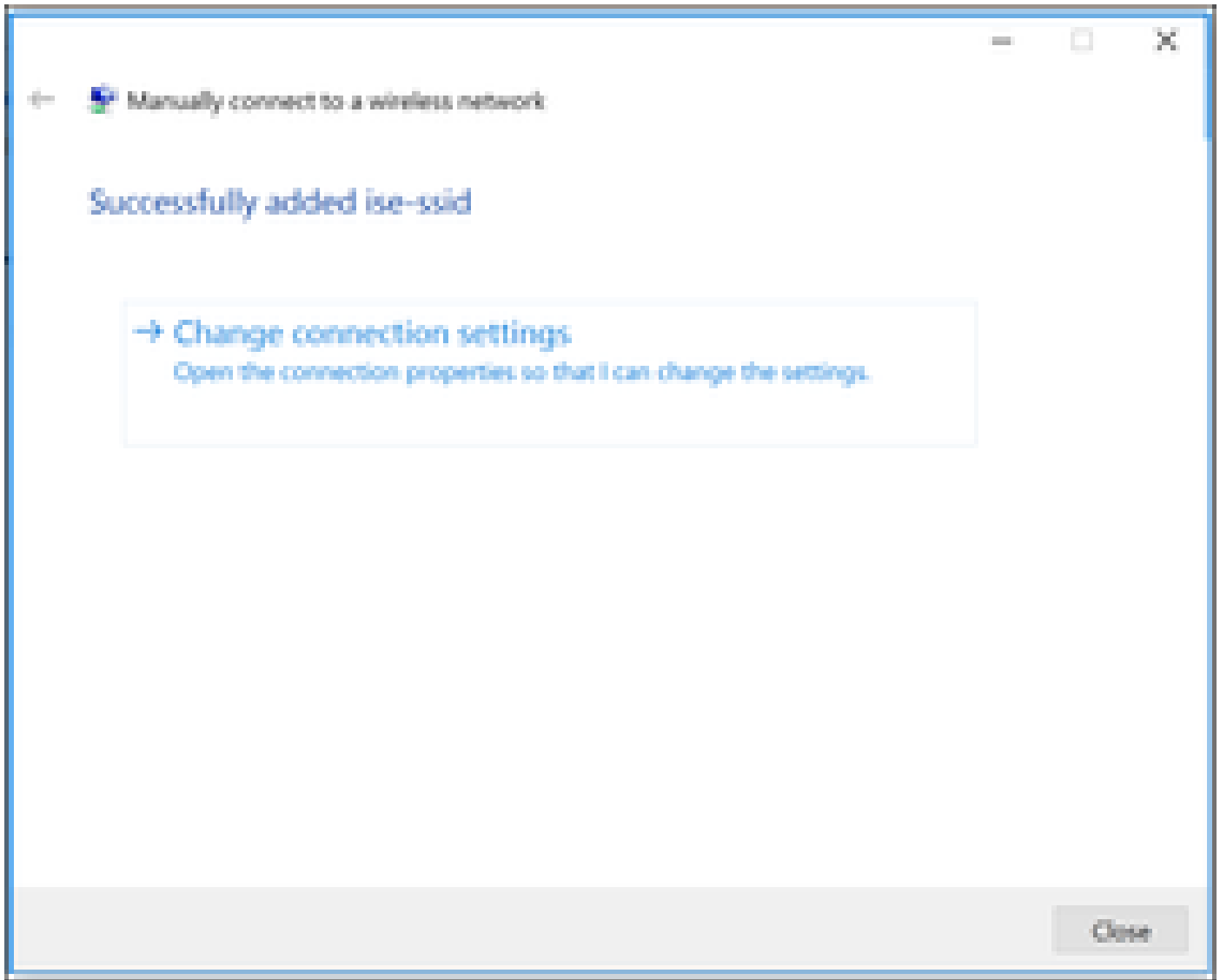
Security Key: Hide characters

Start this connection automatically

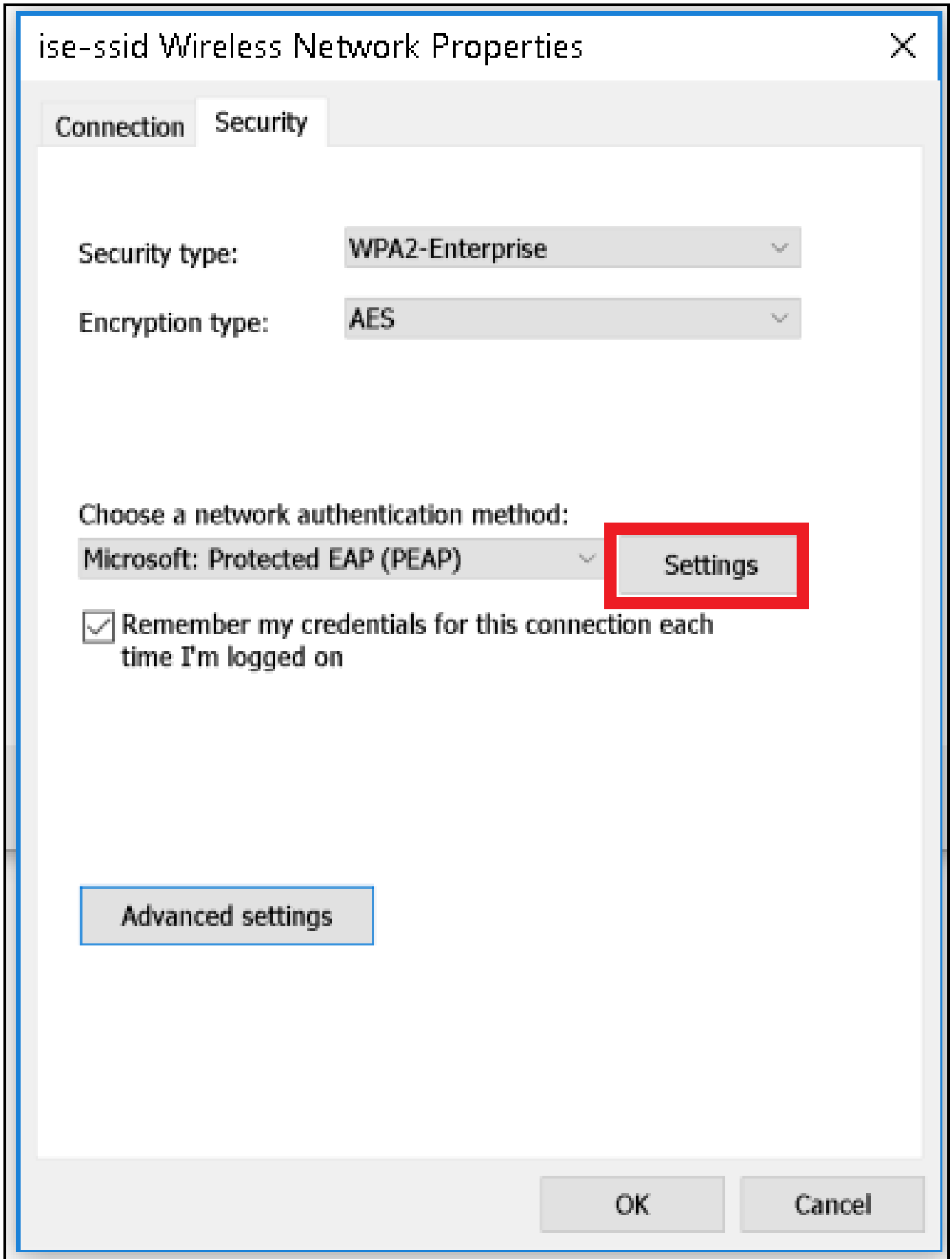
Connect even if the network is not broadcasting

Warning: If you select this option, your computer's privacy might be at risk.

حضوره امك WLAN فيرعت فلم نيوكت صي صختل لاصتال اتاداع| ريغت دح 5 ةوطخال
ةوصولي ف.



ةروضلا يف حضوم وه امك تادادعإل قوف رقناو نامأل بيوبتلا ةمالع ىلإ لقتنا 6. ةوطخلا



ال. ما هـنم ققحتالـمـت RADIUS مـداخـناك اذا ام ددح . 7 ةوطخـلا

ةحص نم ققحتلالالخال نم مداخللةوه نم ققحتلالنيكمتب مقف ،معنب ةبإلالتنالك اذإ
ايتاذةعقومالISE ةداهش ةمئاقلالدحت :اهب قوئومالرزجاللةقدصمالعجارمالنمو ةداهشلال

Windows ىلع لوخدلاليجست رورم ةملكومسا مادختسإ ليطعتو نيوكت ددح ،كلذ دعب
روصلاليف حضوم وه امك قفاوم ىلع رقنا مئ ،...ايقائلت

Protected EAP Properties



When connecting:

Verify the server's identity by validating the certificate

Connect to these servers (examples: srv1;srv2;.*\,srv3\.com):

Trusted Root Certification Authorities:

- English Global Root...
- English Global Root...
- English Global Root...
- EAP-SelfSignedCertificate
- English Global Root...
- English Global Root...
- English Global Root...
- English Global Root...

Notifications before connecting:

Tell user if the server name or root certificate isn't specified

Select Authentication Method:

Secured password (EAP-MSCHAP v2)

Configure...

Enable Fast Reconnect

Disconnect if server does not present cryptobinding TLV

Enable Identity Privacy

OK

Cancel

ةقداصمك ةقداصملا عضو ددح ،ةمدقتم تادادعإ ددح ،نامألا بيوبتلا ةمالع ىلإ عوجرلا درجمب
وه امك مدختسملا ةقداصملا ISE ىلع اهنوكت مت يتلا دامتعالا تانايب ظفحاو ،مدختسملل
روصلال يف حضوم.

ise-ssid Wireless Network Properties



Connection Security

Security type: WPA2-Enterprise

Encryption type: AES

Choose a network authentication method:

Microsoft: Protected EAP (PEAP)

Settings

Remember my credentials for this connection each time I'm logged on

Advanced settings

OK

Cancel

Advanced settings



802.1X settings

802.11 settings

Specify authentication mode:

User authentication

Save credentials

Delete credentials for all users

Enable single sign on for this network

Perform immediately before user logon

Perform immediately after user logon

Maximum delay (seconds):

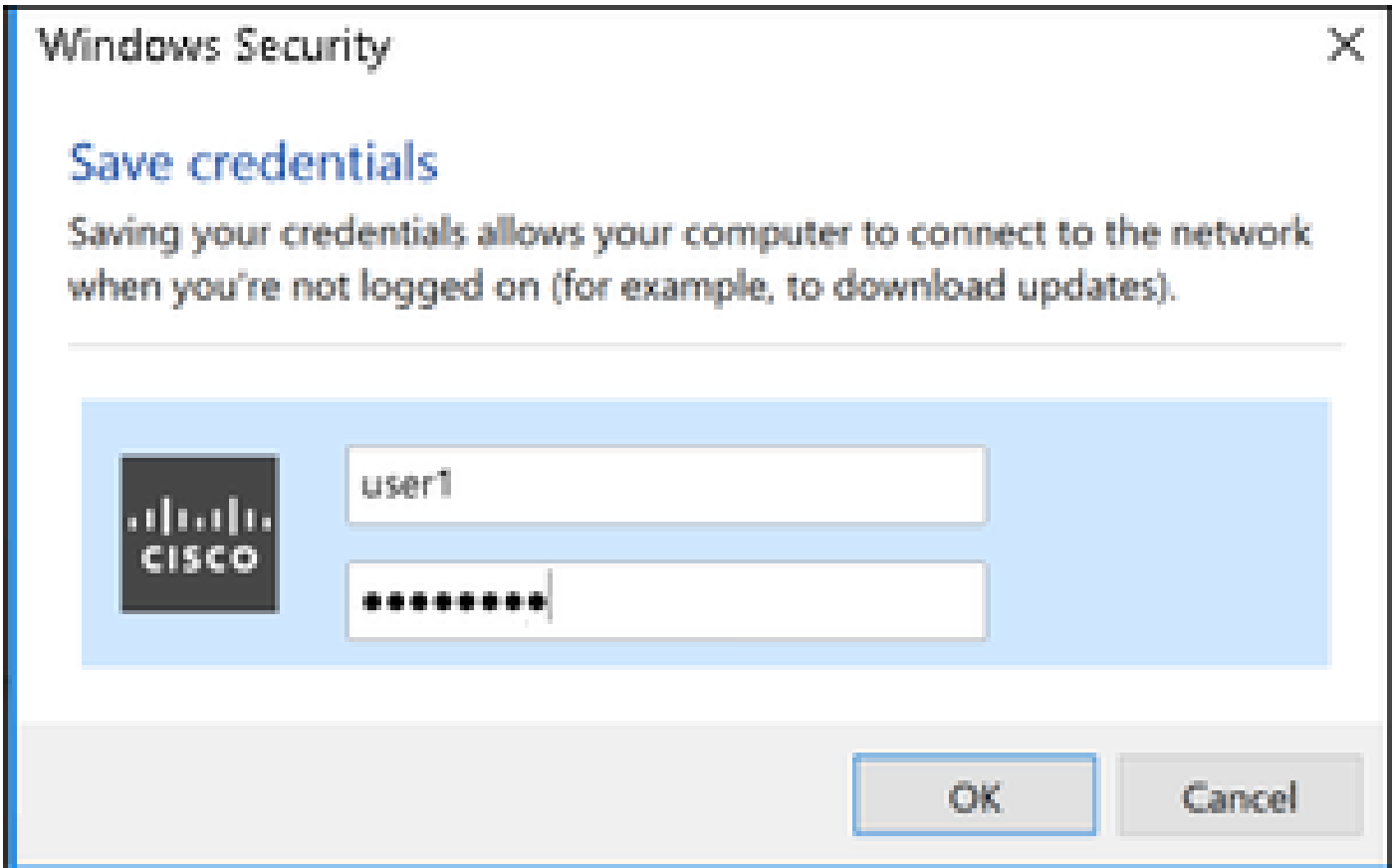
10

Allow additional dialogs to be displayed during single sign on

This network uses separate virtual LANs for machine and user authentication

OK

Cancel



ةحصل ال نم ققحت ال

ححص لكشب نيوكتل لمع ديكأتل مسقلا اذه مدختسا

ISE روظنم نم وأ WLC نم ةقداصلم لقفت نم ققحت ال نكمي

WLC لىل ةقداصلم لىلمع

صاخ مدختسمل ةللمع ةقداصلم لتبقار in order to لىلات رمأل تضكر

```
> debug client <mac-add-client>
> debug dot1x event enable
> debug dot1x aaa enable
```

(تاجرلمل ضعب فذح مت) ةحجانل ةقداصلم لل لاثم:

```
<#root>
```

```
*apfMsConnTask_1: Nov 24 04:30:44.317:
```

```
e4:b3:18:7c:30:58 Processing assoc-req station:e4:b3:18:7c:30:58 AP:00:c8:8b:26:2c:d0-00
```

```
thread:1a5cc288
```

```
*apfMsConnTask_1: Nov 24 04:30:44.317: e4:b3:18:7c:30:58 Reassociation received from mobile on BSSID 00
```

```
*apfMsConnTask_1: Nov 24 04:30:44.318: e4:b3:18:7c:30:58 Applying Interface(management) policy on Mobil
```

*apfMsConnTask_1: Nov 24 04:30:44.318: e4:b3:18:7c:30:58 Applying site-specific Local Bridging override
*apfMsConnTask_1: Nov 24 04:30:44.318: e4:b3:18:7c:30:58 Applying Local Bridging Interface Policy for s
*apfMsConnTask_1: Nov 24 04:30:44.318: e4:b3:18:7c:30:58 RSN Capabilities: 60
*apfMsConnTask_1: Nov 24 04:30:44.318: e4:b3:18:7c:30:58 Marking Mobile as non-

e4:b3:18:7c:30:58 Received 802.11i 802.1X key management suite, enabling dot1x Authentication

11w Capable

*apfMsConnTask_1: Nov 24 04:30:44.318: e4:b3:18:7c:30:58 Received RSN IE with 1 PMKIDs from mobile e4:b
*apfMsConnTask_1: Nov 24 04:30:44.319: Received PMKID: (16)
*apfMsConnTask_1: Nov 24 04:30:44.319: e4:b3:18:7c:30:58 Searching for PMKID in MSCB PMKID cache for mo
*apfMsConnTask_1: Nov 24 04:30:44.319: e4:b3:18:7c:30:58 No valid PMKID found in the MSCB PMKID cache f
*apfMsConnTask_1: Nov 24 04:30:44.319: e4:b3:18:7c:30:58 0.0.0.0 START (0) Initializing policy
*apfMsConnTask_1: Nov 24 04:30:44.319:

e4:b3:18:7c:30:58 0.0.0.0 START (0) Change state to AUTHCHECK (2) last state START (0)

*apfMsConnTask_1: Nov 24 04:30:44.319:

e4:b3:18:7c:30:58 0.0.0.0 AUTHCHECK (2) Change state to 8021X_REQD (3) last state AUTHCHECK (2)

*apfMsConnTask_1: Nov 24 04:30:44.319: e4:b3:18:7c:30:58 0.0.0.0 8021X_REQD (3) Plumbed mobile LWAPP ru
*apfMsConnTask_1: Nov 24 04:30:44.319: e4:b3:18:7c:30:58 apfMsAssoStateInc
*apfMsConnTask_1: Nov 24 04:30:44.319: e4:b3:18:7c:30:58 apfPemAddUser2 (apf_policy.c:437) Changing sta
*apfMsConnTask_1: Nov 24 04:30:44.319: e4:b3:18:7c:30:58 apfPemAddUser2:session timeout forstation e4:b
*apfMsConnTask_1: Nov 24 04:30:44.319: e4:b3:18:7c:30:58 Stopping deletion of Mobile Station: (callerId
*apfMsConnTask_1: Nov 24 04:30:44.319: e4:b3:18:7c:30:58 Func: apfPemAddUser2, Ms Timeout = 0, Session
*apfMsConnTask_1: Nov 24 04:30:44.320: e4:b3:18:7c:30:58 Sending Assoc Response to station on BSSID 00:
*spamApTask2: Nov 24 04:30:44.323: e4:b3:18:7c:30:58 Successful transmission of LWAPP Add-Mobile to AP
*spamApTask2: Nov 24 04:30:44.325: e4:b3:18:7c:30:58 Received ADD_MOBILE ack - Initiating 1x to STA e4:
*spamApTask2: Nov 24 04:30:44.325: e4:b3:18:7c:30:58

Sent dot1x auth initiate message for mobile e4:b3:18:7c:30:58

*Dot1x_NW_MsgTask_0: Nov 24 04:30:44.326: e4:b3:18:7c:30:58 reauth_sm state transition 0 ---> 1 for mob
*Dot1x_NW_MsgTask_0: Nov 24 04:30:44.326: e4:b3:18:7c:30:58 EAP-PARAM Debug - eap-params for Wlan-Id :2
*Dot1x_NW_MsgTask_0: Nov 24 04:30:44.326: e4:b3:18:7c:30:58 Disable re-auth, use PMK lifetime.
*Dot1x_NW_MsgTask_0: Nov 24 04:30:44.326: e4:b3:18:7c:30:58 Station e4:b3:18:7c:30:58 setting dot1x rea
*Dot1x_NW_MsgTask_0: Nov 24 04:30:44.326: e4:b3:18:7c:30:58 Stopping reauth timeout for e4:b3:18:7c:30:
*Dot1x_NW_MsgTask_0: Nov 24 04:30:44.326: e4:b3:18:7c:30:58 dot1x - moving mobile e4:b3:18:7c:30:58 int
*Dot1x_NW_MsgTask_0: Nov 24 04:30:44.326:

e4:b3:18:7c:30:58 Sending EAP-Request/Identity to mobile e4:b3:18:7c:30:58 (EAP Id 1)

*Dot1x_NW_MsgTask_0: Nov 24 04:30:44.380: e4:b3:18:7c:30:58 Received EAPOL EAPPKT from mobile e4:b3:18:
*Dot1x_NW_MsgTask_0: Nov 24 04:30:44.380: e4:b3:18:7c:30:58 Received Identity Response (count=1) from m
*Dot1x_NW_MsgTask_0: Nov 24 04:30:44.380: e4:b3:18:7c:30:58 Resetting reauth count 1 to 0 for mobile e4
*Dot1x_NW_MsgTask_0: Nov 24 04:30:44.380: e4:b3:18:7c:30:58 EAP State update from Connecting to Authent
*Dot1x_NW_MsgTask_0: Nov 24 04:30:44.380: e4:b3:18:7c:30:58 dot1x - moving mobile e4:b3:18:7c:30:58 int
*Dot1x_NW_MsgTask_0: Nov 24 04:30:44.380: e4:b3:18:7c:30:58 Entering Backend Auth Response state for mo
*Dot1x_NW_MsgTask_0: Nov 24 04:30:44.380: e4:b3:18:7c:30:58 Created Acct-Session-ID (58366cf4/e4:b3:18:
*Dot1x_NW_MsgTask_0: Nov 24 04:30:44.386: e4:b3:18:7c:30:58 Processing Access-Challenge for mobile e4:b
*Dot1x_NW_MsgTask_0: Nov 24 04:30:44.387: e4:b3:18:7c:30:58 Entering Backend Auth Req state (id=215) fo
*Dot1x_NW_MsgTask_0: Nov 24 04:30:44.387: e4:b3:18:7c:30:58 WARNING: updated EAP-Identifier 1 ==> 215
*Dot1x_NW_MsgTask_0: Nov 24 04:30:44.387: e4:b3:18:7c:30:58 Sending EAP Request from AAA to mobile e4:b
*Dot1x_NW_MsgTask_0: Nov 24 04:30:44.387: e4:b3:18:7c:30:58 Allocating EAP Pkt for retransmission to mo
*Dot1x_NW_MsgTask_0: Nov 24 04:30:44.390: e4:b3:18:7c:30:58 Received EAPOL EAPPKT from mobile e4:b3:18:
*Dot1x_NW_MsgTask_0: Nov 24 04:30:44.390: e4:b3:18:7c:30:58 Received EAP Response from mobile e4:b3:18:
*Dot1x_NW_MsgTask_0: Nov 24 04:30:44.390: e4:b3:18:7c:30:58 Resetting reauth count 0 to 0 for mobile e4
*Dot1x_NW_MsgTask_0: Nov 24 04:30:44.390: e4:b3:18:7c:30:58 Entering Backend Auth Response state for mo
*Dot1x_NW_MsgTask_0: Nov 24 04:30:44.393: e4:b3:18:7c:30:58 Processing Access-Challenge for mobile e4:b
*Dot1x_NW_MsgTask_0: Nov 24 04:30:44.393: e4:b3:18:7c:30:58 Entering Backend Auth Req state (id=216) fo
*Dot1x_NW_MsgTask_0: Nov 24 04:30:44.393: e4:b3:18:7c:30:58 Sending EAP Request from AAA to mobile e4:b
*Dot1x_NW_MsgTask_0: Nov 24 04:30:44.393: e4:b3:18:7c:30:58 Reusing allocated memory for EAP Pkt for r

*Dot1x_NW_MsgTask_0: Nov 24 04:30:44.530:

e4:b3:18:7c:30:58 Processing Access-Accept for mobile e4:b3:18:7c:30:58

*Dot1x_NW_MsgTask_0: Nov 24 04:30:44.530: e4:b3:18:7c:30:58 Resetting web IPv4 ac1 from 255 to 255

*Dot1x_NW_MsgTask_0: Nov 24 04:30:44.530: e4:b3:18:7c:30:58 Resetting web IPv4 Flex ac1 from 65535 to 6

*Dot1x_NW_MsgTask_0: Nov 24 04:30:44.530:

e4:b3:18:7c:30:58 Username entry (user1) created for mobile, length = 253

*Dot1x_NW_MsgTask_0: Nov 24 04:30:44.530:

e4:b3:18:7c:30:58 Found an interface name:'vlan2404' corresponds to interface name received: vlan2404

*Dot1x_NW_MsgTask_0: Nov 24 04:30:44.530: e4:b3:18:7c:30:58 override for default ap group, marking intg

*Dot1x_NW_MsgTask_0: Nov 24 04:30:44.530: e4:b3:18:7c:30:58 Applying Interface(management) policy on Mo

*Dot1x_NW_MsgTask_0: Nov 24 04:30:44.530: e4:b3:18:7c:30:58 Re-applying interface policy for client

*Dot1x_NW_MsgTask_0: Nov 24 04:30:44.531: e4:b3:18:7c:30:58 apfApplyWlanPolicy: Apply WLAN Policy over

*Dot1x_NW_MsgTask_0: Nov 24 04:30:44.531:

e4:b3:18:7c:30:58 Inserting AAA Override struct for mobile

MAC: e4:b3:18:7c:30:58, source 4

*Dot1x_NW_MsgTask_0: Nov 24 04:30:44.531: e4:b3:18:7c:30:58 Applying override policy from source Overri

*Dot1x_NW_MsgTask_0: Nov 24

04:30:44.531: e4:b3:18:7c:30:58 Found an interface name:'vlan2404' corresponds to interface name receive

*Dot1x_NW_MsgTask_0: Nov 24 04:30:44.531: e4:b3:18:7c:30:58 Applying Interface(vlan2404) policy on Mobi

*Dot1x_NW_MsgTask_0: Nov 24 04:30:44.531: e4:b3:18:7c:30:58 Re-applying interface policy for client

*Dot1x_NW_MsgTask_0: Nov 24 04:30:44.531: e4:b3:18:7c:30:58 Setting re-auth timeout to 0 seconds, got f

*Dot1x_NW_MsgTask_0: Nov 24 04:30:44.531: e4:b3:18:7c:30:58 Station e4:b3:18:7c:30:58 setting dot1x rea

*Dot1x_NW_MsgTask_0: Nov 24 04:30:44.531: e4:b3:18:7c:30:58 Stopping reauth timeout for e4:b3:18:7c:30:

*Dot1x_NW_MsgTask_0: Nov 24 04:30:44.531: e4:b3:18:7c:30:58 Creating a PKC PMKID Cache entry for stati

*Dot1x_NW_MsgTask_0: Nov 24 04:30:44.531: e4:b3:18:7c:30:58 Resetting MSCB PMK Cache Entry 0 for stati

*Dot1x_NW_MsgTask_0: Nov 24 04:30:44.531: e4:b3:18:7c:30:58 Adding BSSID 00:c8:8b:26:2c:d1 to PMKID cac

*Dot1x_NW_MsgTask_0: Nov 24 04:30:44.531: New PMKID: (16)

*Dot1x_NW_MsgTask_0: Nov 24 04:30:44.531: [0000] cc 3a 3d 26 80 17 8b f1 2d c5 cd fd a0 8a c4 39

*Dot1x_NW_MsgTask_0: Nov 24 04:30:44.531: e4:b3:18:7c:30:58 unsetting PmkIdValidatedByAp

*Dot1x_NW_MsgTask_0: Nov 24 04:30:44.531: e4:b3:18:7c:30:58 Updating AAA Overrides from local for stati

*Dot1x_NW_MsgTask_0: Nov 24 04:30:44.531: e4:b3:18:7c:30:58 Adding Audit session ID payload in Mobility

*Dot1x_NW_MsgTask_0: Nov 24 04:30:44.531: e4:b3:18:7c:30:58 0 PMK-update groupcast messages sent

*Dot1x_NW_MsgTask_0: Nov 24 04:30:44.531: e4:b3:18:7c:30:58 PMK sent to mobility group

*Dot1x_NW_MsgTask_0: Nov 24 04:30:44.531: e4:b3:18:7c:30:58 Disabling re-auth since PMK lifetime can ta

*Dot1x_NW_MsgTask_0: Nov 24 04:30:44.531: e4:b3:18:7c:30:58 Sending EAP-Success to mobile e4:b3:18:7c:3

*Dot1x_NW_MsgTask_0: Nov 24 04:30:44.532: e4:b3:18:7c:30:58 Freeing AAACB from Dot1xCB as AAA auth is d

*Dot1x_NW_MsgTask_0: Nov 24 04:30:44.532: e4:b3:18:7c:30:58 key Desc Version FT - 0

*Dot1x_NW_MsgTask_0: Nov 24 04:30:44.532: e4:b3:18:7c:30:58 Found an cache entry for BSSID 00:c8:8b:26:

*Dot1x_NW_MsgTask_0: Nov 24 04:30:44.532: Including PMKID in M1 (16)

*Dot1x_NW_MsgTask_0: Nov 24 04:30:44.532: [0000] cc 3a 3d 26 80 17 8b f1 2d c5 cd fd a0 8a c4 39

*Dot1x_NW_MsgTask_0: Nov 24 04:30:44.532: M1 - Key Data: (22)

*Dot1x_NW_MsgTask_0: Nov 24 04:30:44.532: [0000] dd 14 00 0f ac 04 cc 3a 3d 26 80 17 8b f1 2d c5

*Dot1x_NW_MsgTask_0: Nov 24 04:30:44.532: [0016] cd fd a0 8a c4 39

*Dot1x_NW_MsgTask_0: Nov 24 04:30:44.532:

e4:b3:18:7c:30:58 Starting key exchange to mobile e4:b3:18:7c:30:58, data packets will be dropped

*Dot1x_NW_MsgTask_0: Nov 24 04:30:44.532:

e4:b3:18:7c:30:58 Sending EAPOL-Key Message to mobile e4:b3:18:7c:30:58

state INITPMK (message 1), replay counter 00.00.00.00.00.00.00

*Dot1x_NW_MsgTask_0: Nov 24 04:30:44.532: e4:b3:18:7c:30:58 Reusing allocated memory for EAP Pkt for r

*Dot1x_NW_MsgTask_0: Nov 24 04:30:44.532: e4:b3:18:7c:30:58 Entering Backend Auth Success state (id=223

*Dot1x_NW_MsgTask_0: Nov 24 04:30:44.532: e4:b3:18:7c:30:58 Received Auth Success while in Authentication
*Dot1x_NW_MsgTask_0: Nov 24 04:30:44.532: e4:b3:18:7c:30:58 dot1x - moving mobile e4:b3:18:7c:30:58 into
*Dot1x_NW_MsgTask_0: Nov 24 04:30:44.547: e4:b3:18:7c:30:58 Received EAPOL-Key from mobile e4:b3:18:7c:30:58
*Dot1x_NW_MsgTask_0: Nov 24 04:30:44.547: e4:b3:18:7c:30:58 Ignoring invalid EAPOL version (1) in EAPOL
*Dot1x_NW_MsgTask_0: Nov 24 04:30:44.547: e4:b3:18:7c:30:58 key Desc Version FT - 0
*Dot1x_NW_MsgTask_0: Nov 24 04:30:44.547:

e4:b3:18:7c:30:58 Received EAPOL-key in PTK_START state (message 2) from mobile

e4:b3:18:7c:30:58

*Dot1x_NW_MsgTask_0: Nov 24 04:30:44.548: e4:b3:18:7c:30:58 Successfully computed PTK from PMK!!!
*Dot1x_NW_MsgTask_0: Nov 24 04:30:44.548: e4:b3:18:7c:30:58 Received valid MIC in EAPOL Key Message M2!
*Dot1x_NW_MsgTask_0: Nov 24 04:30:44.548: e4:b3:18:7c:30:58 Not Flex client. Do not distribute PMK Key
*Dot1x_NW_MsgTask_0: Nov 24 04:30:44.548: e4:b3:18:7c:30:58 Stopping retransmission timer for mobile e4:b3:18:7c:30:58
*Dot1x_NW_MsgTask_0: Nov 24 04:30:44.548: e4:b3:18:7c:30:58 key Desc Version FT - 0
*Dot1x_NW_MsgTask_0: Nov 24 04:30:44.548: e4:b3:18:7c:30:58 Sending EAPOL-Key Message to mobile e4:b3:18:7c:30:58
state PTKINITNEGOTIATING (message 3), replay counter 00.00.00.00.00.00.01
*Dot1x_NW_MsgTask_0: Nov 24 04:30:44.548: e4:b3:18:7c:30:58 Reusing allocated memory for EAP Pkt for mobile e4:b3:18:7c:30:58
*Dot1x_NW_MsgTask_0: Nov 24 04:30:44.555: e4:b3:18:7c:30:58 Received EAPOL-Key from mobile e4:b3:18:7c:30:58
*Dot1x_NW_MsgTask_0: Nov 24 04:30:44.555: e4:b3:18:7c:30:58 Ignoring invalid EAPOL version (1) in EAPOL
*Dot1x_NW_MsgTask_0: Nov 24 04:30:44.555: e4:b3:18:7c:30:58 key Desc Version FT - 0
*Dot1x_NW_MsgTask_0: Nov 24 04:30:44.555:

e4:b3:18:7c:30:58 Received EAPOL-key in PTKINITNEGOTIATING state (message 4)

from mobile e4:b3:18:7c:30:58

*Dot1x_NW_MsgTask_0: Nov 24 04:30:44.555: e4:b3:18:7c:30:58 Stopping retransmission timer for mobile e4:b3:18:7c:30:58
*Dot1x_NW_MsgTask_0: Nov 24 04:30:44.555: e4:b3:18:7c:30:58 Freeing EAP Retransmit Buffer for mobile e4:b3:18:7c:30:58
*Dot1x_NW_MsgTask_0: Nov 24 04:30:44.555: e4:b3:18:7c:30:58 apfMs1xStateInc
*Dot1x_NW_MsgTask_0: Nov 24 04:30:44.555: e4:b3:18:7c:30:58 apfMsPeapSimReqCntInc
*Dot1x_NW_MsgTask_0: Nov 24 04:30:44.555: e4:b3:18:7c:30:58 apfMsPeapSimReqSuccessCntInc
*Dot1x_NW_MsgTask_0: Nov 24 04:30:44.555:

e4:b3:18:7c:30:58 0.0.0.0 8021X_REQD (3) Change state to L2AUTHCOMPLETE (4) last state 8021X_REQD (3)

*Dot1x_NW_MsgTask_0: Nov 24 04:30:44.555: e4:b3:18:7c:30:58 Mobility query, PEM State: L2AUTHCOMPLETE
*Dot1x_NW_MsgTask_0: Nov 24 04:30:44.555: e4:b3:18:7c:30:58 Building Mobile Announce :
*Dot1x_NW_MsgTask_0: Nov 24 04:30:44.556: e4:b3:18:7c:30:58 Building Client Payload:
*Dot1x_NW_MsgTask_0: Nov 24 04:30:44.556: e4:b3:18:7c:30:58 Client Ip: 0.0.0.0
*Dot1x_NW_MsgTask_0: Nov 24 04:30:44.556: e4:b3:18:7c:30:58 Client Vlan Ip: 172.16.0.134, Vlan mask
*Dot1x_NW_MsgTask_0: Nov 24 04:30:44.556: e4:b3:18:7c:30:58 Client Vap Security: 16384
*Dot1x_NW_MsgTask_0: Nov 24 04:30:44.556: e4:b3:18:7c:30:58 Virtual Ip: 10.10.10.10
*Dot1x_NW_MsgTask_0: Nov 24 04:30:44.556: e4:b3:18:7c:30:58 ssid: ise-ssid
*Dot1x_NW_MsgTask_0: Nov 24 04:30:44.556: e4:b3:18:7c:30:58 Building VlanIpPayload.
*Dot1x_NW_MsgTask_0: Nov 24 04:30:44.556: e4:b3:18:7c:30:58 Not Using WMM Compliance code qosCap 00
*Dot1x_NW_MsgTask_0: Nov 24 04:30:44.556: e4:b3:18:7c:30:58 0.0.0.0 L2AUTHCOMPLETE (4) Plumbed mobile L2AUTHCOMPLETE (4)
*Dot1x_NW_MsgTask_0: Nov 24 04:30:44.556:

e4:b3:18:7c:30:58 0.0.0.0 L2AUTHCOMPLETE (4) Change state to DHCP_REQD (7) last state L2AUTHCOMPLETE (4)

*Dot1x_NW_MsgTask_0: Nov 24 04:30:44.556: e4:b3:18:7c:30:58 0.0.0.0 DHCP_REQD (7) pemAdvanceState2 6677
*Dot1x_NW_MsgTask_0: Nov 24 04:30:44.556: e4:b3:18:7c:30:58 0.0.0.0 DHCP_REQD (7) Adding Fast Path rule
type = Airespace AP - Learn IP address
on AP 00:c8:8b:26:2c:d0, slot 0, interface = 1, QOS = 0
IPv4 ACL ID = 255, IPv4
*Dot1x_NW_MsgTask_0: Nov 24 04:30:44.556: e4:b3:18:7c:30:58 0.0.0.0 DHCP_REQD (7) Fast Path rule (contd)
*Dot1x_NW_MsgTask_0: Nov 24 04:30:44.556: e4:b3:18:7c:30:58 0.0.0.0 DHCP_REQD (7) Fast Path rule (contd)
*Dot1x_NW_MsgTask_0: Nov 24 04:30:44.556: e4:b3:18:7c:30:58 0.0.0.0 DHCP_REQD (7) Successfully plumbed mobile L2AUTHCOMPLETE (4)
*Dot1x_NW_MsgTask_0: Nov 24 04:30:44.556: e4:b3:18:7c:30:58 Successfully Plumbed PTK session Keys for mobile e4:b3:18:7c:30:58
*spamApTask2: Nov 24 04:30:44.556: e4:b3:18:7c:30:58 Successful transmission of LWAPP Add-Mobile to AP 00:c8:8b:26:2c:d0
*pemReceiveTask: Nov 24 04:30:44.557: e4:b3:18:7c:30:58 0.0.0.0 Added NPU entry of type 9, dtlFlags 0x0
*apfReceiveTask: Nov 24 04:30:44.557: e4:b3:18:7c:30:58 0.0.0.0 DHCP_REQD (7) mobility role update request received
Peer = 0.0.0.0, Old Anchor = 0.0.0.0, New Anchor = 172.16.0.3
*apfReceiveTask: Nov 24 04:30:44.557: e4:b3:18:7c:30:58 0.0.0.0 DHCP_REQD (7) State Update from Mobility

```

*apfReceiveTask: Nov 24 04:30:44.557: e4:b3:18:7c:30:58 0.0.0.0 DHCP_REQD (7) pemAdvanceState2 6315, Ad
*apfReceiveTask: Nov 24 04:30:44.557: e4:b3:18:7c:30:58 0.0.0.0 DHCP_REQD (7) Replacing Fast Path rule
  IPv4 ACL ID = 255,
*apfReceiveTask: Nov 24 04:30:44.557: e4:b3:18:7c:30:58 0.0.0.0 DHCP_REQD (7) Fast Path rule (contd...)
*apfReceiveTask: Nov 24 04:30:44.557: e4:b3:18:7c:30:58 0.0.0.0 DHCP_REQD (7) Fast Path rule (contd...)
*apfReceiveTask: Nov 24 04:30:44.557: e4:b3:18:7c:30:58 0.0.0.0 DHCP_REQD (7) Successfully plumbed mobi
*pemReceiveTask: Nov 24 04:30:44.557: e4:b3:18:7c:30:58 Sent an XID frame
*dtlArpTask: Nov 24 04:30:47.932: e4:b3:18:7c:30:58 Static IP client associated to interface vlan2404 w
*dtlArpTask: Nov 24 04:30:47.933: e4:b3:18:7c:30:58 apfMsRunStateInc
*dtlArpTask: Nov 24 04:30:47.933:

```

e4:b3:18:7c:30:58 172.16.0.151 DHCP_REQD (7) Change state to RUN (20)

Last state DHCP_REQD (7)

عاطخأل ححصت للحم ةأدم دختسأ، ةلهس ةقيرطب عاطخأل ححصت ليمع تاجرم ةءارقل
 ةيكلسالل:

[Wireless Debug Analyzer \(يكلسالل ححصت للحم\)](#)

ISE لىل ةقداصلم لةي لمع

ليوختل جهنو ةقداصلم ل جهن ةفرعمل ةرشابم لال جسلل > RADIUS > تاي لمعل لىل لقتنا
 م.دختس ملل هنيي عت مت يذل ليوختل فيرت فلوم.

وه امك الي صفت رثك ةقداصلم لةي لمع ضرعل لىل صافات قوف رقنا، تامولعمل نم ديزمل
 ةروصل لىل فحوصم.

Time	Sta...	Details	Ide...	Endpoint ID	Endpoint ...	Authentication Policy	Authorization Policy	Authorization Profiles
No...			user1	08:74:02:77:13:45	Apple-Device	Default >> Rule name >> Default	Default >> NameAuthZrule	PermitAccessVLAN2404

اهحالصلو عاطخأل فاشكتسا

نيوكتل اذل اهحالصلو عاطخأل فاشكتسال ةددم تامولعمل آي لاج رفوت ال

ةمچرتل هذه لوج

ةللأل تاي نقتل نمة ومة مادختساب دن تسمل اذة Cisco تمةرت
ملاعلاء انء مء مء نمة دختسمل معد و تمة مء دقتل ةر شبل او
امك ةق قء نوك ت نل ةللأل ةمچرت لصف أن ةظحال مء ءرء. ةصاأل مء تءل ب
Cisco ةلخت. فرتمة مچرت مء دقء ةل ةل ةفارتحال ةمچرتل عم لاعل او
ىل إأمءءاد ءوچرلاب ةصوء و تامةرتل هذه ةقء نء اهءل وئس م Cisco
Systems (رفوتم طبارل) ةلصلأل ةزءل ءن إل دن تسمل