

Cisco PGW 2200 J SimWriter رابتخا بلط ةطخ

تايوتحمل

[ةمدقملا](#)

[ةيساسألا تابلطتملا](#)

[تابلطتملا](#)

[ةمدختسملا تانوكملا](#)

[تاحالطصلا](#)

[Cisco PGW 2200 SimWriter](#)

[SimWriter مادختسلا لاثم](#)

[ةلص تاذا تامولعم](#)

ةمدقملا

ليغشت ةيفيك نم ققحتلل ةقيرط دجوت الف ، اهرابتخا مث بلط ةطخ عاشناب موقت امنيب رابتخا ةملاكم ءارجال جاتحت ، تقولا اذه يف Cisco PGW 2200 يلع بلط ةطخ ربع ةملاكم ةدقمو ةعيرس اهنإ ، راثألا لىل نورظنت ام دنع . ةملاكملا يلع لمك MDL عبتت ليغشتو لهسأ اراسم /opt/CiscoMGC/bin لىلد نمض دوجوملا SimWriter دعي ، ببسلا اذلو . مهفلل ادانتسا تاملاكملا ةجلعم ةيفيك مهفل ةليسو ةمجرتلل نم ققحتلا ءادأ كل رفوت . مهفلل اهتجلعم متت ةملاكملا ءاكاحم عاشناب ءادألا هذه موقت . كم اظن ب ءصاخلا بلطلا ةطخ لىل بلطلا ةطخ ةطساوب .

ةيساسألا تابلطتملا

تابلطتملا

ةيلالل عيضاوملاب ةفرعم كي دل نوكت ناب Cisco ي صوت :

- [Cisco نم 9 رادصلا طئاسولا ءرابع مكحت ةدحو](#)

ةمدختسملا تانوكملا

Cisco PGW 2200 SoftSwitch لوجملا لىل دننتملا اذه يف ءراول تامولعمل دننست

ءصاخ ةيلمعم ةئيب يف ءدوجوملا ءزهجال نم دننتملا اذه يف ءراول تامولعمل عاشناب مت تناك اذإ . (يضا رتفا) حوسمم نيوكتب دننتملا اذه يف ءمدختسملا ءزهجال عيمج تادب رما يال لمحتحمل ريثأتلل كمهف نم دكأتف ، ءرشابم كتكبش

تاحالطصلا

[تاحالطصلا لوج تامولعمل نم ديزم يلعل لوصحلل ةينقتلا Cisco تاحيملت تاحالطصلا عجار تادننتملا](#)

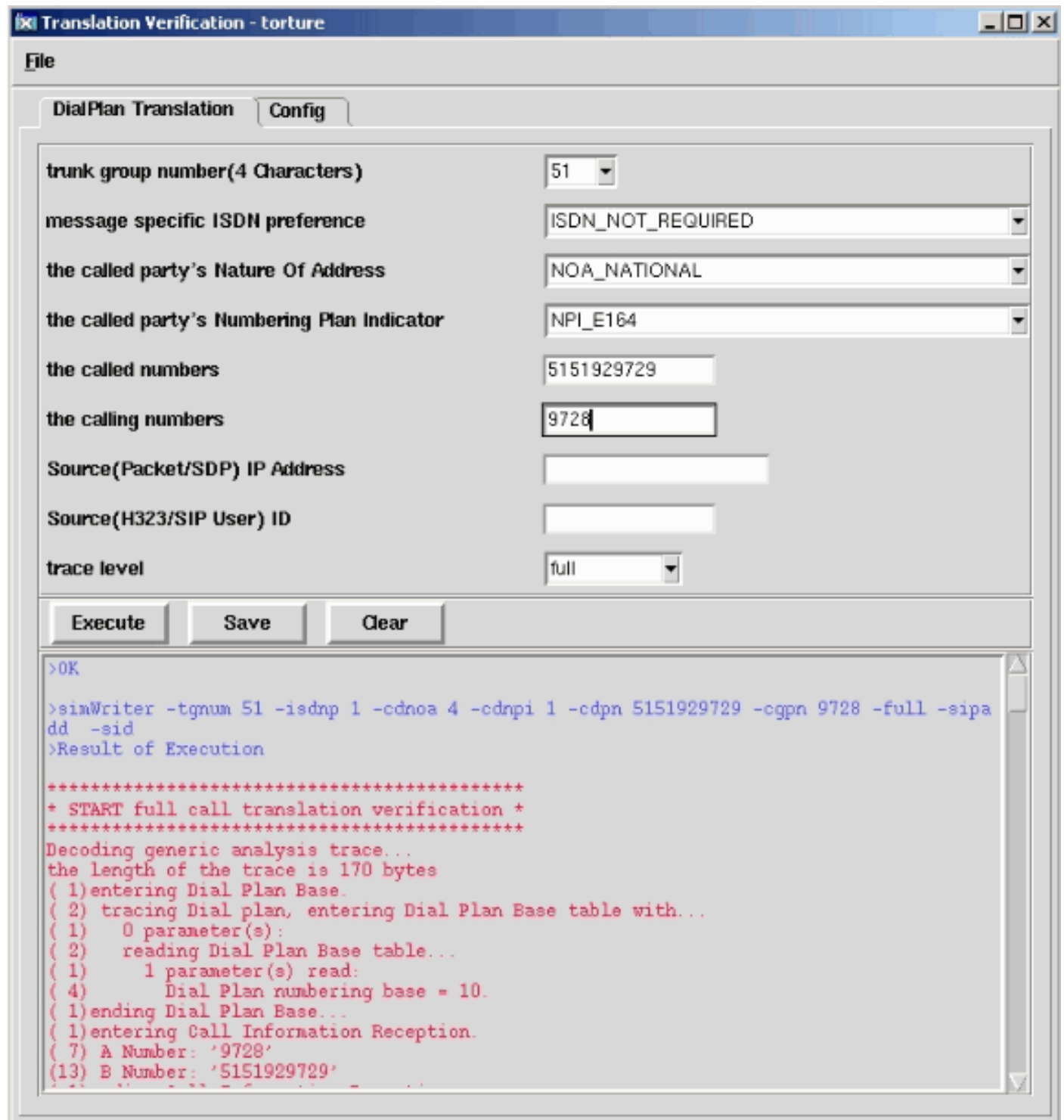
[Cisco PGW 2200 SimWriter](#)

ليغشبت مقو /opt/CiscoMGC/bin ليلد لى لقتنا، SimWriter تاميلعت تاراخي شدحاً ضرعل فصو **-help** ةملعملال كل رفوت. رمأوالا رطس لىل **simWriter -help** رمأالا و **simWriter** رمأالا بغيرت تنك اذا. تااطيسولا هذه ضعب لىل طقف دننسملا اذه زكري. ةطيسولكل تاميلعتلا لىلدلال فسا **MGC_Toolkit** رمأالا ليغشبت مقو، ةيموسر ةلاحي لىل اذه مادختسا لىل مدختسا. نمضملا ةمچرتلا نم ققحتلال مسق لىل اذه يوتحي. رب **X-Windows** /opt/Toolkit/bin **simWriter** رمأالا اضيأ

تامولعملال هذه لىلقت، /opt/Toolkit/bin لىلد نمض **MGC_Toolkit**. رمأالا رادصا دنع، ايلاح



رابطالا اذه ضرعل ةمچرتلا نم ققحتلال راخي ددح:



SimWriter تامي لعت جارخا تامولعم :1 لودجلا

لس لس لة اراي ت	ةجج	عون ولا س ية ط	فصولا
- نغت م	مقر ةوعومج م طوطخ لاصتال ل	4 ماقرا	مقر ددج و هو .يمازل ارايخا اذه يذلا لاصتال طوطخ ةوعومج دع ب متي .هيلع اعادتسال اي طوطخ ةوعومج مادختسا كذا عيمج ةفرعمل ددج ل لاصتال ليمعلا لوح ةنخمل تامولعمل .dat. تافل نم مهتال يصف ت
- تمل ئل	<none>	<none>	ةبل اطملاو SimWriter ل ريشي تحت .بولطم لمالك ل عبتتال ناب عبتت ةعابط متت ،عضولا اذه جارخا مسق عجار .ال يصف ت رثكأ فصول لوصحلل CallVer قيسنتال اذهل ي ل يصف ت
- غايد	<none>	<none>	نابل طي و SimWriter ل ريشي يصيخش تال عبتتال متي عضولا اذه تحت .بوغرم متي نكلو ،جئاتنل عيمج ةعابط عجار .لودجلا تامولعم ةفاك لهاجت لوصحلل CallVer جارخا مسق اذهل ي ل يصف ت فصول قيسنتال
- isdp	يلعتال تام جمر بل اية يتال مت اهدادعت ل ي ISDP	ماقرا	ISDN ليضفت ديدحت راسم ديدحت اناثا هم ادختسال متي يذلا وه ليضفتال اذه .رداص ناو نعل ال اسر ي ف هني مضت راسم ليضفت كانه .ةيلوالا تافل نم هطاق تال متي يفاضل طوطخ ةوعومج مادختسا .dat. ميقل درتو .ةيلصال ل لاصتال ل 2. لودجلا ي ةنكمملا
- CD NOA	ةعيبط ناو نعل فرطال مسمل ي	ماقرا	صاخلا NOA ل ثمي دعم مقر مقرلا وه اذه .يعدتسمل فرطالاب ي NOAs مي ق عم قفاوتي يذلا 3 لودجلا عجار .لاصتال قاي س جحصلا ددعلا مي قو NOA اعاونال اهب ةصاخلا
- cdn pi	رشؤم ةطخ مي قرت فرطال تسمل ي	ماقرا	صاخلا NOA ل ثمي درس م مقر مقرلا وه اذه .يعدتسمل فرطالاب ي NPIs مي ق عم قفاوتملا 4 لودجلا عجار .لاصتال قاي س جحصلا اهددع مي قو NPI اعاونال

	(NPI)		
- cdpn	مقرر فرطال م ت ي ذ ل ا اع د ت س ا ه	ل س ل س ة ر ا ل ا م ا ق	، ا ي ل ا ح . ي م س م ل ا ب ز ح ل ا م ق ر و ه ا ذ ه 0 ن م م ا ق ر ا ل ا ب ل ل ط ل ا ة ط خ م ع د ت ي ا ب ح م س ي ا ل ، ك ل ذ ل . ط ق ف 9 ي ل ا ة . ي ر ش ع ة ي س ا د س م ا ق ر ا
- Cgnoa	ن م ا ل ب ز ح ة و ع د ل ا	م ا ق ر ا	ف ر ط ل N O A ل ث م ي د ع م م ق ر ي ذ ل ا م ق ر ل ا و ه ا ذ ه . ل ا ص ت ا ل ا ي ف N O A s م ي ق ع م ق ف ا و ت ي ل ا ص ت ا ل ا ق ا ي س
- cgnpi	N P I ن م ة ه ج ا ص ت ا ل ا ل	م ا ق ر ا	ف ر ط ل N O A ل ث م ي د ع م م ق ر ق ف ا و ت م ل ا م ق ر ل ا و ه ا ذ ه . ل ا ص ت ا ل ا ق ا ي س ي ف N P I s م ي ق ع م ل ا ص ت ا ل ا
- CGPN	م ق ر ف ر ط ا ص ت ا ل ا ل	ل س ل س ة ر ا ل ا م ا ق	، ا ي ل ا ح . ل ا ص ت ا ل ا ة ه ج م ق ر و ه ا ذ ه 0 ن م م ا ق ر ا ل ا ب ل ل ط ل ا ة ط خ م ع د ت ي ا ب ح و م س م ر ي غ . ط ق ف 9 ي ل ا ة . ي ر ش ع ة ي س ا د س م ا ق ر ا

ISDN ل حي حص ددع مي ق: 2 لودجلا

ISDN عون	ددعلا مي ق حي حص ل ا
CLASS_ISDN_PREFERRED	0
ل ب و ل ط م ل ا ي ض ا ر ت ف ا ل ا د ا د ع ا ل ا CLASS_ISDN_NOT_REQUIRED	1
CLASS_ISDN_REQUIRED	2

NOA ل حي حص ددع مي ق: 3 لودجلا

NOA عون	ي ق ة م ددع حص حي
NOA_NONE	1
noa_unknown	2
noa_subscriber	3
ة ي ن ط و ل ا ا و ن	4
ة ي م ل ا ع ل ا ا ي و ن	5
NOA_NETWORK ة ك ب ش	6
noa_meridian	7
ر ب ي و ن	8
noa_unique_3dig_nat_num	9
ي ن ا ي و ن	10
NOA_NO_ANI_REC'D	11
NOA_NON_UNIQUE_SUBSCRIBER	12

NOA_NON_UNIQUE_NATIONAL	13
NOA_UNUNIQUE_INTERNATIONAL	14
NOA_OPRQ_TREATED	15
NOA_OPRQ_SUBSCRIBER	16
NOA_OPRQ_NATIONAL	17
NOA_OPREQ_INTERNATIONAL	18
NOA_OPRQ_NO_NUM	19
NOA_CARRIER_NO_NUM	20
NOA_950_Call	21
NOA_TEST_LINE_CODE	22
NOA_INT_INBOUND	23
NOA_NAT_OR_INTL_CARRIER_ACC_CODE_INC	24
NOA_CELL_GLOBAL_ID_GSM	25
NOA_CELL_GLOBAL_ID_NMT_900	26
NOA_CELL_GLOBAL_ID_NMT_450	27
NOA_CELL_GLOBAL_ID_AUTON	28
NOA_PORT_NUMBER	29
NOA_PISN_SPECIFIC_NUMBER	30
NOA_UK_SPECIFIC_Address	31
NOA_Spare	32
NOA_SUBSCRIBER_OPERATOR_REQUESTED	33
NOA_NATIONAL_OPERATOR_REQUESTED	34
NOA_INTERNATIONAL_OPERATOR_REQUESTED	35
NOA_NO_NUMBER_CURRENT_OPERATOR_REQUESTED	36
NOA_NO_NUMBER_CUT_THROUGH_TO_CARRIER	37
NOA_950_PUBLIC_HOTEL_LINE	38
noa_test_call	39
NOA_MCI_VNET	40
NOA_INTERNATIONAL_OPERATOR_TO_OPERATOR_OUTSIDE_WZI	41
NOA_INTERNATIONAL_OPERATOR_TO_OPERATOR_INSIDE_WZI	42
NOA_DIRECT_TERMINATION_OVERFLOW	43
NOA_IS_EXTENDED_INTERNATIONAL_TERMINATION	44
NOA_TRANSFER_IS_IS_IS	45
NOA_CREDIT_Card	46
يظفتم	47

NPI لحيحص ددع مي ق: 4 لودجلا

نوع NPI	دعوى ميق حىصل
NPI_None	0
NPI_E164 يضا رت فالال	1
NPI_DATA	2
NPI_TELEX	3
NPI_PNP	4
لانويشان ي ا ي ب ن ا	5
NPI_Telephony	6
NPI_Maritime_Mobile	7
NPI_LAND_MOBILE	8
NPI_ISDN_MOBILE	9

[SimWriter مادختسا لاثم](#)

ربع ثحبا، الؤا NAS. لىل PGW 2200 ربع TDM ةحيرست ةملاكم ءارجا متي، لاثملا اذه في تقولا في ءاطخا ي ا نع غلبت Cisco نم PGW 2200 بل لطلال ةطخ تناك اذا ام ةفرعمل SimWriter حىص ريغ لكشب PGW 2200 ريفوت هي متي يذلا.

جمارب ثدحا لىل PGW ةيقرت ب Cisco ي صوت، SimWriter لىل ءدعتللا ضع ب ب س ب :**ةطخال** فلم في SysVirtualSwitch = 1. ن ا نم اضي ا دك ا ت. ةيفاضاللا تامولعمل نم ققحت. حىصتلال لىل دمض .mdos CALLVER* تي ب ثت نم و /opt/ciscoMGC/etc لىل دي في XECfgParm.dat /opt/ciscoMGC/lib نم ءاطخاللا حىصت فرعمل لىل عجرا. Cisco [CSCee18831](#) نم ءارجا متي تاريفيغتللا عيمج طاقتللا نم SimWriter ني كمت ةيفي ك ب طاخ ي ذلا (طوقف) ةيفاضاللا لىل.

51 راسملا لىل عىر ا ةرم ةملاكملا هي جوت دي عوي B مقرلا نم ني مقر لو لاثملا اذه لىزي مقرلا نم لو ال مقرلا ةلازا ءدب لىل ريشي يذلا، "dw=2" و "dw=1" لىل BMODDIG ةجيتن عون يوتحي B، [dw=2] ني مقر لو لؤ فذحو.

```
numan-add:resultset:custgrpid="sw01",name="rset51"
```

```
numan-add:resulttable:custgrpid="sw01",name="strip51",resulttype="BMODDIG",  
dw1="1",dw2="2",setname="rset51"
```

```
numan-add:resulttable:custgrpid="sw01",name="route51",resulttype="ROUTE",  
dw1="rtgrp51",setname="rset51"
```

كنكمي، **prov-dply** و **prov-cpy** MML رماو رادص او، ROUTE ml و BMODDIG رماو ةفاضللا دعب **prov-rtrv** و **number-rtrv** رماو مادختساب ني وكتللا نم ققحتلالا.

```
PGW2200 mml>prov-rtrv:trnkgrp:"all"
```

```
MGC-01 - Media Gateway Controller 2004-02-02 18:51:34.983 WET
```

```
M RTRV
```

```
"session=UnsolNot_On17:trnkgrp"
```

```
/*
```

```
NAME          CLLI          SVC          TYPE          SELSEQ        QABLE  
-----  
51            NULL          ss7-bru8     TDM_ISUP      LIDL          N
```

```
*/
```

```
;
```

```
PGW2200 mml>numan-rtrv:bdigtrees:custgrpid="sw01",callside="originating"
```

M RTRV

"session=UnsolNot_Onl7:bdigtree"

/*

digitString callSide

originating

PointInDigitString

51

ResultSetName

rset51

resultName	resultType	dw1	dw2	dw3	dw4	nextResult
strip51	BMODDIG	1	2	0	0	route51
route51	ROUTE	rtgrp51	0	0	0	0

جارخا نم ققحت، وأحي حصل لمعالا نم ققحت لاو رابتخا عملاك مءارخا اما كنكمي، ةالاحل هذه يف
SimWriter فءر عملا مءا اءا ام ةفءر عملا

رهظي اما رماوالا رطس نم الءب ةبللاطم ةهءاو مءختساف، simWriter ةطيسي وركذت ال تنك اءا
ءارخا ال اءه:

```
mgcusr@PGW2200%simWriter -prompt
Enter the trunk group number (4 Characters)      : 51
Enter the ISDN preference (0-2 [Default 1])     :
Enter the Called party's NOA (1-47 [Default 4]) : 4
Enter the Called party's NPI(0-9 [Default 1])   : 1
Enter the Called party number                   : 5151929729
Enter the Calling party number                  : 9727
```

ءارخا ال اءه ءضوي اما ةرشابم رماوالا رطس مءختست نأ رايءخا اضيأ كنكمي

```
!--- This command has been wrapped to the second !--- line for spatial reasons. mgcusr@PGW2200%
simWriter -tgnum 51 -isdnp 0 -cdnoa 4 -cdnpi 1 -cdpn
5151929729 -cgpn 9727 -full -sipadd -sid
```

```
Analyzing .dat files:
used default Route Preference
used default Terminating Max Digits
used default Terminating Min Digits
used default Originating Min Digits
used default Originating Max Digits
used default Carrier Screening property
used default Anumnormalise property
used default Bnumnormalise property
used default Enable IP Screening property
used default NPA
used default AOCEenabled field
used the default field for default directory number
used the default Database Access Error flag
Analysis complete, writing message...
Message completed, running simulator...
*****
* START full call translation verification *
*****
Decoding generic analysis trace...
the length of the trace is 170 bytes
```

```
( 1)entering Dial Plan Base.
( 2) tracing Dial plan, entering Dial Plan Base table with...
( 1)   0 parameter(s):
( 2)   reading Dial Plan Base table...
( 1)     1 parameter(s) read:
( 4)       Dial Plan numbering base = 10.
( 1)ending Dial Plan Base...
( 1)entering Call Information Reception.
( 7) A Number: '9727'
(13) B Number: '5151929729'
( 1)ending Call Information Reception...
( 1)entering Profile Analysis (NOA).
(13) Tracing call number: '5151929729' (Called party number)
( 7) Trace for customer: 'sw01'
( 5) TreeBase: '10'
( 2) tracing Dial plan, entering NOA_A table with...
( 1)   1 parameter(s):
( 4)     NOA_A table index = 4.
( 2)   reading NOA_A table...
( 1)     2 parameter(s) read:
( 4)       NPI_A index = 0.
( 4)       Result index = 0.
( 2) tracing Dial plan, entering CPC table with...
( 1)   1 parameter(s):
( 4)     CPC table index = 9.
( 2)   reading CPC table...
( 1)     1 parameter(s) read:
( 4)       Result Index = 0.
( 2) tracing Dial plan, entering TMR table with...
( 1)   1 parameter(s):
( 4)     TMR table index = 78.
( 2)   reading TMR table...
( 1)     1 parameter(s) read:
( 4)       Result Index = 0.
( 2) tracing Dial plan, entering NOA table with...
( 1)   1 parameter(s):
( 4)     NOA table index = 4.
( 2)   reading NOA table...
( 1)     2 parameter(s) read:
( 4)       NPI index = 0.
( 4)       Result index = 0.
( 2) tracing Dial plan, entering Result table with...
( 1)   1 parameter(s):
( 4)     Result table index = 0.
( 1)ending Profile Analysis (NOA)...
( 1)entering A-Number Analysis.
( 7) Tracing call number: '9727' (Calling party number)
( 7) Trace for customer: 'sw01'
( 2) tracing Dial plan, entering A-Number digit tree table with...
( 1)   1 parameter(s):
( 4)     A-Number digit tree index = 1 (starting index table)
( 2)   reading A-Number digit tree table...
( 1)     3 parameter(s) read:
( 4)       Digit to present = 0.
( 4)       Next tree index = 0.
( 4)       Result index = 0.
-----break in message reached-----
Decoding generic analysis trace...
the length of the trace is 206 bytes
( 2) tracing Dial plan, entering A-Number digit tree table with...
( 1)   1 parameter(s):
( 4)     A-Number digit tree index = 10 (table: 2 / digit: '-1')
( 2)   reading A-Number digit tree table...
( 1)     3 parameter(s) read:
```


(4) Digit to present = 0.
(4) Next tree index = 0.
(4) Result index = 0.
(1)ending A-Number Analysis...
(1)entering B-Number Analysis.
(13) **Tracing call number: '5151929729' (Called party number)**
(7) Trace for customer: 'sw01'
(2) tracing Dial plan, entering B-Number digit tree table with...
(1) 1 parameter(s):
(4) B-Number digit tree index = 1 (starting index table)
(2) reading B-Number digit tree table...
(1) 3 parameter(s) read:
(4) Digit to present = 0.
(4) Next tree index = 0.
(4) Result index = 0.
(2) tracing Dial plan, entering B-Number digit tree table with...
(1) 1 parameter(s):
(4) B-Number digit tree index = 6 (table: 1 / digit: '5')
(2) reading B-Number digit tree table...
(1) 3 parameter(s) read:
(4) Digit to present = 0.
(4) Next tree index = 4.
(4) Result index = 0.
(2) tracing Dial plan, entering B-Number digit tree table with...
(1) 1 parameter(s):
(4) Route table index = 1.
(4) Next route index = 0.
(4) Route Size = 1.
(4) Distribution (0=Sequential, else=Load Shared) = 0.
(1)ending Route Analysis...
(1)entering Trunk Group Analysis.
(2) tracing Routing plan, entering Trunk route table with...
(1) 2 parameter(s):
(4) Trunk route table index = 1.
(4) Trunk route table offset = 1.
(2) reading Trunk route table...
(1) 1 parameter(s) read:
(4) Trunk group table index = 1.
(2) tracing Routing plan, entering Trunk group table with...
(1) 1 parameter(s):
(4) Trunk group table index = 1.
(2) reading Trunk group table...
(1) 3 parameter(s) read:
(4) Trunk group ID = 51.
(4) Signalling type = 1.
(4) Attributes table index = 1.
(2) tracing Routing plan, entering TDM attributes table with...
(1) 1 parameter(s):
(4) TDM attributes table index = 1.
(2) reading TDM attributes table...
(1) 5 parameter(s) read:
(4) Reattempts = 0.
(4) Queueing = 0.
(4) Cut through = 3.
(4) Reserve Incoming Percentage = 0.
(4) Bearer Capability Index = 0.
(1)ending Trunk Group Analysis...
(1)entering Trunk Sorting.
(3) **trunk group summary: 1 primary and 0 secondary trunk groups**
primary trunk groups:
(4) 51
secondary trunk groups:
(1)ending Trunk Sorting...
(1)end of trace reached

* DONE full call translation verification *
* with 0 bytes left untranslated *

mgcusr@PGW2200%

ة،الاحل هذه يف) ل SS7 ل sniffer م ادخ تس اب لي ص اف ت ل ل طا ق ت ل ل او ل اص ت ا ر اب ت خ ا ع ا ر ج اب م ق ، ا ر ي خ ا
(ق ي ب ط ت ل PT-MCT cisco sniffer ل

Time stamp Orig IP address Dest IP address Prot Msg Data

15:44:33.184859 1-010-1[02129] 1-003-1[02073] ITU ISUP. -> **IAM** (01) CIC=00031
CDPN=**51929729F**
SLS=15 Pr:0 Ni:NTL

***** DETAIL *****

CIC 31
MESSAGE TYPE 0x01 IAM - Initial_Address_Msg
NATURE_OF_CONNECTION 0x06
LENGTH: 0x01 FIXED DATA 0x00
SATELLITE IND 0 no_satellite_circuit_in_connection
CONTINUITY CHECK IND 0 Continuity_check_not_required
ECHO SUPPRESSOR IND 0 outgoing_half_echo_suppressor_not_included
FORWARD CALL IND. 0x07
LENGTH: 0x02 FIXED DATA 0x60 0x00
NATL/INTL CALL IND 0 incoming_national_call
END-TO-END METHOD IND 0 no_end_to_end_method_available
INTERWORKING IND 0 no_interworking_encountered
END-TO-END INFO IND 0 no_end_to_end_information_available
ISUP IND. 1 ISUP_used_all_the_way
ISDN PREFERENCE IND 1 isdn_up_pref_not_reqd
ISDN ACCESS IND. 0 originating_access_non_ISDN
SCCP Method 0 no indication
CALLING PARTYS CATEGORY 0x09
LENGTH: 0x01 FIXED DATA 0x0A
CALLING PARTYS CATEGORY 10 ordinary_subscriber_precedence_level_1
TRANSMISSION MEDIUM REQUIRED 0x02
LENGTH: 0x01 FIXED DATA 0x03
TRANSMISSION MEDIUM REQUIRED 3 3_1_kHz_audio
INDEX TO CALLED PTY ADDRESS 0x02
INDEX TO OPTIONAL PART 0x09
CALLED PARTY NUMBER PARM 0x04
LENGTH: 0x07 VAR. DATA 0x83 0x90 0x15 0x29 0x79 0x92 0x0F
ODD/EVEN IND 1 odd_number_of_digits
NATURE OF ADDRESS IND 0x03 national_number
INTERNAL NETWORK PARM 1 routing_to_internal_network_number_not_allowed
NUMBERING PLAN 1 ISDN_Telephony_Numbering_Plan
DIGITS: **51929729F**
EXTENSION DIGIT F -ST
OPTIONAL PARAMETERS:
RESERVED/UNKNOWN OPT PARM 0x3D
LENGTH: 0x01 OPT. DATA 0x1F
USER SERVICE INFO 0x1D
LENGTH: 0x03 OPT. DATA 0x90 0x90 0xA3
EXTENSION BIT 1 last_octet
CODING STANDARD 0 CCITT_coding_standard
BC INFO TRANSFER CAP 16 audio_3_1_khz
EXTENSION BIT 1 last_octet
TRANSFER MODE 0 circuit_mode
INFORMATION TRANSFER RATE 16 rate_64_kb_per_s
EXTENSION BIT 1 last_octet

USER LAYER IDENTIFICATION 1 user_info_layer_1_protocol
MULTIPLIER/PROTOCOL ID 3 A_law_speech
ACCESS TRANSPORT 0x03
LENGTH: 0x04 OPT. DATA 0x1E 0x02 0x81 0x83
END OF OPTIONAL PARAMETERS 0x00
***** END_OF_MSG *****

15:44:33.211009 10.48.84.25:2427 10.48.84.188:2427 **MGCP..... ->**
CRCX 2001761 s0/ds1-0/31@v5300-3.cisco.com MGCP 0.1
C: 75
L: e:off,nt:LOCAL
M: sendrecv
R:
S:
X: 1E8B60

15:44:33.225115 10.48.84.188:2427 10.48.84.25:2427 **MGCP..... -> 200** 2001761 OK
I: 33
v=0
o=- 51 0 LOCAL EPN S0/DS1-0/31
s=Cisco SDP 0
c=LOCAL EPN S0/DS1-0/31
t=0 0
m=audio 0 LOCAL 0

15:44:33.241263 10.48.84.25:2427 10.48.84.188:2427 **MGCP..... ->**
CRCX 2001762 s0/ds1-0/1@v5300-3.cisco.com MGCP 0.1
C: 75
L: e:off,nt:LOCAL
M: sendrecv
v=0
o=- 51 0 LOCAL EPN S0/DS1-0/31
s=Cisco SDP 0
c=LOCAL EPN S0/DS1-0/31
t=0 0
m=audio 0 LOCAL 0

15:44:33.254784 10.48.84.188:2427 10.48.84.25:2427 **MGCP..... -> 200** 2001762 OK
I: 34
v=0
o=- 52 0 LOCAL EPN S0/DS1-0/1
s=Cisco SDP 0
c=LOCAL EPN S0/DS1-0/1
t=0 0
m=audio 0 LOCAL 0

15:44:33.270628 1-003-1[02073] 1-010-1[02129] ITU ISUP. ->
IAM (01) CIC=00001
CDPN=929729F
SLS=01 Pr:0 Ni:NTL

***** DETAIL *****

CIC 1
MESSAGE TYPE 0x01 **IAM** - Initial_Address_Msg
NATURE_OF_CONNECTION 0x06
LENGTH: 0x01 FIXED DATA 0x00
SATELLITE IND 0 no_satellite_circuit_in_connection
CONTINUITY CHECK IND 0 Continuity_check_not_required
ECHO SUPPRESSOR IND 0 outgoing_half_echo_suppressor_not_included
FORWARD CALL IND. 0x07
LENGTH: 0x02 FIXED DATA 0x60 0x00
NATL/INTL CALL IND 0 incoming_national_call
END-TO-END METHOD IND 0 no_end_to_end_method_available
INTERWORKING IND 0 no_interworking_encountered
END-TO-END INFO IND 0 no_end_to_end_information_available
ISUP IND. 1 ISUP_used_all_the_way
ISDN PREFERENCE IND 1 isdn_up_pref_not_reqd

```

ISDN ACCESS IND.          0 originating_access_non_ISDN
SCCP Method               0 no indication
CALLING PARTYS CATEGORY  0x09
  LENGTH:                 0x01 FIXED DATA 0x0A
  CALLING PARTYS CATEGORY 10 ordinary_subscriber_precedence_level_1
TRANSMISSION MEDIUM REQUIRED 0x02
  LENGTH:                 0x01 FIXED DATA 0x03
  TRANSMISSION MEDIUM REQUIRED 3 3_1_kHz_audio
INDEX TO CALLED PTY ADDRESS 0x02
INDEX TO OPTIONAL PART    0x08
CALLED PARTY NUMBER PARM  0x04
  LENGTH:                 0x06 VAR.  DATA 0x83 0x90 0x29 0x79 0x92 0x0F
  ODD/EVEN IND            1 odd_number_of_digits
  NATURE OF ADDRESS IND   0x03 national_number
  INTERNAL NETWORK PARM   1 routing to internal network number not allowed
  NUMBERING PLAN          1 ISDN_Telephony_Numbering_Plan
  DIGITS:                 929729F
  EXTENSION DIGIT        F -ST
OPTIONAL PARAMETERS:
RESERVED/UNKNOWN OPT PARM 0x3D
  LENGTH:                 0x01 OPT.  DATA 0x1F
USER SERVICE INFO         0x1D
  LENGTH:                 0x03 OPT.  DATA 0x90 0x90 0xA3
  EXTENSION BIT           1 last_octet
  CODING STANDARD         0 CCITT_coding_standard
  BC INFO TRANSFER CAP    16 audio_3_1_khz
  EXTENSION BIT           1 last_octet
  TRANSFER MODE           0 circuit_mode
  INFORMATION TRANSFER RATE 16 rate_64_kb_per_s
  EXTENSION BIT           1 last_octet
  USER LAYER IDENTIFICATION 1 user_info_layer_1_protocol
  MULTIPLIER/PROTOCOL ID  3 A_law_speech
ACCESS TRANSPORT         0x03
  LENGTH:                 0x04 OPT.  DATA 0x1E 0x02 0x81 0x83
RESERVED/UNKNOWN OPT PARM 0x39
  LENGTH:                 0x02 OPT.  DATA 0x3D 0xC0
END OF OPTIONAL PARAMETERS 0x00
*****                END_OF_MSG                *****

```

```

15:44:33.544074 1-010-1[02129] 1-003-1[02073] ITU ISUP. -> ACM (06) CIC=00001
SLS=01 Pr:0 Ni:NTL

```

```

***** DETAIL *****

```

```

CIC 1
MESSAGE TYPE 0x06 ACM - Address_Complete_Msg
BACKWARD CALL IND 0x11
  LENGTH: 0x02 FIXED DATA 0x02 0x14
  CHARGE IND 2 charge
  CALLED PTYS STATUS IND 0 no_indication_default
  CALLED PARTYS CATEGORY 0 no_indication_default
  END-TO-END METHOD IND 0 no_end_to_end_method_available
  INTERWORKING IND 0 no_interworking_encountered
  END-TO-END INFO IND 0 no_end_to_end_information_available
  ISUP IND. 1 ISUP_used_all_the_way
  REVERSE HOLDING IND 0 reverse_holding_not_required
  ISDN ACCESS IND. 1 terminating_access_ISDN
INDEX TO OPTIONAL PART 0x01
OPTIONAL PARAMETERS:
OPTIONAL BACKWARD CALL IND 0x29
  LENGTH: 0x01 OPT.  DATA 0x01
  FORWARDING IND 0 no_indication
  INBAND INFO IND 1 inband_information
  SIMPLE SEGMENTATION 0 no additional information will be sent

```

NET EXCESSIVE DELAY 0 no_indication
USER NETWORK INTERACTION 0 no_indication
END OF OPTIONAL PARAMETERS 0x00
***** END_OF_MSG *****

15:44:33.560716 10.48.84.25:2427 10.48.84.188:2427 **MGCP**..... ->
MDCX 2001764 s0/ds1-0/31@v5300-3.cisco.com MGCP 0.1
C: 75
I: 33
L: e:off,nt:LOCAL
M: sendrecv
R:
S:
X: 1E8B63
v=0
o=- 52 0 LOCAL EPN S0/DS1-0/1
s=Cisco SDP 0
c=LOCAL EPN S0/DS1-0/1
t=0 0
m=audio 0 LOCAL 0

15:44:33.565405 10.48.84.188:2427 10.48.84.25:2427 MGCP..... -> 200 2001764 OK
v=0
o=- 51 1 LOCAL EPN S0/DS1-0/31
s=Cisco SDP 0
c=LOCAL EPN S0/DS1-0/31
t=0 0
m=audio 0 LOCAL 0

15:44:33.580472 1-003-1[02073] 1-010-1[02129] ITU ISUP. -> ACM (06) CIC=00031
SLS=15 Pr:0 Ni:NTL

***** DETAIL *****

CIC 31
MESSAGE TYPE 0x06 **ACM** - Address_Complete_Msg
BACKWARD CALL IND 0x11
LENGTH: 0x02 FIXED DATA 0x02 0x14
CHARGE IND 2 charge
CALLED PTYS STATUS IND 0 no_indication_default
CALLED PARTYS CATEGORY 0 no_indication_default
END-TO-END METHOD IND 0 no_end_to_end_method_available
INTERWORKING IND 0 no_interworking_encountered
END-TO-END INFO IND 0 no_end_to_end_information_available
ISUP IND. 1 ISUP_used_all_the_way
REVERSE HOLDING IND 0 reverse_holding_not_required
ISDN ACCESS IND. 1 terminating_access_ISDN
INDEX TO OPTIONAL PART 0x01
OPTIONAL PARAMETERS:
OPTIONAL BACKWARD CALL IND 0x29
LENGTH: 0x01 OPT. DATA 0x01
FORWARDING IND 0 no_indication
INBAND INFO IND 1 inband_information
SIMPLE SEGMENTATION 0 no additional information will be sent
NET EXCESSIVE DELAY 0 no_indication
USER NETWORK INTERACTION 0 no_indication
END OF OPTIONAL PARAMETERS 0x00
***** END_OF_MSG *****

15:44:34.824070 1-010-1[02129] 1-003-1[02073] ITU ISUP. -> **ANM** (09) CIC=00001
SLS=01 Pr:0 Ni:NTL

***** DETAIL *****

CIC 1
MESSAGE TYPE 0x09 **ANM** - Answer_Msg

```

INDEX TO OPTIONAL PART          0x01
OPTIONAL PARAMETERS:
BACKWARD CALL IND              0x11
  LENGTH:                       0x02 OPT.  DATA 0x02 0x04
  CHARGE IND                    2 charge
  CALLED PTYS STATUS IND        0 no_indication_default
  CALLED PARTYS CATEGORY        0 no_indication_default
  END-TO-END METHOD IND          0 no_end_to_end_method_available
  INTERWORKING IND              0 no_interworking_encountered
  END-TO-END INFO IND           0 no_end_to_end_information_available
  ISUP IND.                     1 ISUP_used_all_the_way
  REVERSE HOLDING IND           0 reverse_holding_not_required
  ISDN ACCESS IND.              0 terminating_access_non_ISDN
ACCESS TRANSPORT                0x03
  LENGTH:                       0x04 OPT.  DATA 0x1E 0x02 0x81 0x82
END OF OPTIONAL PARAMETERS      0x00
*****                          END_OF_MSG                          *****

```

15:44:34.841851 1-003-1[02073] 1-010-1[02129] ITU ISUP. -> **ANM** (09) CIC=00031
SLS=15 Pr:0 Ni:NTL

```

***** DETAIL *****
CIC                                31
MESSAGE TYPE                       0x09 ANM - Answer_Msg
INDEX TO OPTIONAL PART              0x01
OPTIONAL PARAMETERS:
BACKWARD CALL IND                  0x11
  LENGTH:                          0x02 OPT.  DATA 0x02 0x04
  CHARGE IND                        2 charge
  CALLED PTYS STATUS IND            0 no_indication_default
  CALLED PARTYS CATEGORY            0 no_indication_default
  END-TO-END METHOD IND              0 no_end_to_end_method_available
  INTERWORKING IND                  0 no_interworking_encountered
  END-TO-END INFO IND               0 no_end_to_end_information_available
  ISUP IND.                         1 ISUP_used_all_the_way
  REVERSE HOLDING IND               0 reverse_holding_not_required
  ISDN ACCESS IND.                  0 terminating_access_non_ISDN
ACCESS TRANSPORT                    0x03
  LENGTH:                          0x04 OPT.  DATA 0x1E 0x02 0x81 0x82
END OF OPTIONAL PARAMETERS          0x00
*****                          END_OF_MSG                          *****

```

15:44:39.112351 1-010-1[02129] 1-003-1[02073] ITU ISUP. -> **REL (0c) CIC=00001**
Cause 16 = Normal Call Clearing
SLS=01 Pr:0 Ni:NTL

```

***** DETAIL *****
CIC                                1
MESSAGE TYPE                       0x0C REL - Release_Msg
INDEX TO VARIABLE PART              0x02
INDEX TO OPTIONAL PART              0x00
CAUSE IND                           0x12
  LENGTH:                          0x02 VAR.  DATA 0x80 0x90
  EXTENSION BIT                     1 diagnostic_is_not_included
  CODING STANDARD                    0 CCITT_standard
  GENERAL LOCATION                   0 User
  EXTENSION BIT                     1 diagnostic_is_not_included
  CLASS                             1 Normal event
  VALUE IN CLASS                     0
  CAUSE VALUE                        16 Normal_clearing
*****                          END_OF_MSG                          *****

```

```

15:44:39.130674 10.48.84.25:2427 10.48.84.188:242 MGCP..... ->
                DLCX 2001766 s0/ds1-0/31@v5300-3.cisco.com MGCP 0.1
                C: 75
                I: 33
                R:
                S:
                X: 1E8B65
15:44:39.131018 10.48.84.25:2427 10.48.84.188:2427 MGCP..... ->
                DLCX 2001768 s0/ds1-0/1@v5300-3.cisco.com MGCP 0.1
                C: 75
                I: 34
                R:
                S:
                X: 1E8B67
15:44:39.131487 1-003-1[02073] 1-010-1[02129] ITU ISUP. ->
                REL (0c) CIC=00031
                Cause 16 = Normal Call Clearing
                SLS=15 Pr:0 Ni:NTL

```

```

***** DETAIL *****
CIC                31
MESSAGE TYPE       0x0C REL - Release_Msg
INDEX TO VARIABLE PART 0x02
INDEX TO OPTIONAL PART 0x00
CAUSE IND          0x12
  LENGTH:         0x02 VAR. DATA 0x80 0x90
  EXTENSION BIT   1 diagnostic_is_not_included
  CODING STANDARD 0 CCITT_standard
  GENERAL LOCATION 0 User
  EXTENSION BIT   1 diagnostic_is_not_included
  CLASS           1 Normal event
  VALUE IN CLASS  0
  CAUSE VALUE     16 Normal_clearing
*****                END_OF_MSG                *****

```

```

15:44:39.133012 10.48.84.188:2427 10.48.84.25:2427 MGCP..... ->
                250 2001766 HP delcon OK
15:44:39.134597 10.48.84.188:2427 10.48.84.25:2427 MGCP..... ->
                250 2001768 HP delcon OK
15:44:39.151424 1-003-1[02073] 1-010-1[02129] ITU ISUP. -> RLC (10) CIC=00001
                SLS=01 Pr:0 Ni:NTL

```

```

***** DETAIL *****
CIC                1
MESSAGE TYPE       0x10 RLC - Release_Complete_Msg
*****                END_OF_MSG                *****

```

```

15:44:39.247719 1-010-1[02129] 1-003-1[02073] ITU ISUP. -> RLC (10) CIC=00031
                SLS=15 Pr:0 Ni:NTL

```

```

***** DETAIL *****
CIC                31
MESSAGE TYPE       0x10 RLC - Release_Complete_Msg

```

إلى دن تست يتل التاريخ غتال ةفاك طاقتل نم نآل یتح SimWriter نكمتي مل: ةطخال
 (طاقف نوبز لجسي) [CSce18831](#) id قب cisco تلحأ. ةيصال

[قلص تاذا مولى عم](#)

- [Cisco PGW 2200 Softswitch Tech](#) تاطحالم
- [PGW 2200 ل نيوكتلا ةلثمأ](#)
- [توصللا ةنقت معد](#)
- [IP تالاصت او ةتوصللا تالاصتالا تاجت نم معد](#)
- [اهالصل او Cisco نم ةفتاهل IP ةمدخء اطخأ فاشكتسا](#)
- [Cisco Systems - تادنتس مل او ةنقتلا معدلا](#)

ةمچرتل هذه لوح

ةللأل تاي نقتل نمة ومة مادخت ساب دن تسم ل اذه Cisco ت مچرت
م لاعل اءن اءمچ ي ف ن م دخت سمل ل معد و ت م م دقت ل ة يرش ب ل و
امك ة قيق د ن وكت ن ل ة للأل ة مچرت ل ض ف ا ن ا ة ظ حال م ي ج ر ي . ة ص ا خ ل م ه ت غ ل ب
Cisco ي ل خ ت . ف ر ت م م مچرت م ا ه م د ق ي ي ت ل ا ة ي ف ا ر ت ح ا ل ا ة مچرت ل ا م ل ا ح ل ا و ه
ى ل ا م اء ا د ع و ج ر ل ا ب ي ص و ت و ت ا مچرت ل ا ه ذ ه ة ق د ن ع ا ه ت ي ل و ئ س م Cisco
Systems (رف و ت م ط بار ل ا) ي ل ص ا ل ا ي ز ي ل ج ن ا ل ا دن ت س م ل ا