

Catalyst 2948G-L3 - ةنيعل ننيوكت تايلمع لمالكلاب زاهجلا تانيوكت

المحتويات

[المقدمة](#)

[المتطلبات الأساسية](#)

[المتطلبات](#)

[المكونات المستخدمة](#)

[الاصطلاحات](#)

[مثال 1- شبكة VLAN واحدة](#)

[تكوين Catalyst 2948G-L3](#)

[تكوين Catalyst 3548XL](#)

[مثال 2—شبكة متعددة شبكات VLAN](#)

[تكوين Catalyst 2948G-L3](#)

[تكوين Catalyst 3512XL](#)

[تكوين Catalyst 2924XL](#)

[تكوين Catalyst 3548XL](#)

[المثال 3- طبقة التوزيع متعددة شبكات VLAN التي تتصل بمركز الشبكة](#)

[تكوين Catalyst 2948G-L3-01](#)

[تكوين Catalyst 2948G-L3-02](#)

[تكوين Catalyst 2948G-01](#)

[تكوين Catalyst 2948G-15](#)

[تكوين Catalyst 6506-01](#)

[تكوين Catalyst 6506-02](#)

[معلومات ذات صلة](#)

المقدمة

هذا وثيقة امتداد من المادة حفازة 2948g-l3 عينة تشكيل - VLAN وحيد، multi-VLAN، و multi-VLAN توزيع طبقة يربط إلى شبكة وثيقة لب. أحلت المادة حفازة 2948g-l3 عينة تشكيل - VLAN وحيد، multi-VLAN، و multi-VLAN توزيع طبقة يربط إلى شبكة core ل كثير تفصيلي التشكيل مثال في هذا وثيقة.

المتطلبات الأساسية

المتطلبات

لا توجد متطلبات خاصة لهذا المستند.

المكونات المستخدمة

لا يقتصر هذا المستند على إصدارات برامج ومكونات مادية معينة.

الاصطلاحات

للحصول على مزيد من المعلومات حول اصطلاحات المستندات، ارجع إلى اصطلاحات تلميحات Cisco التقنية.

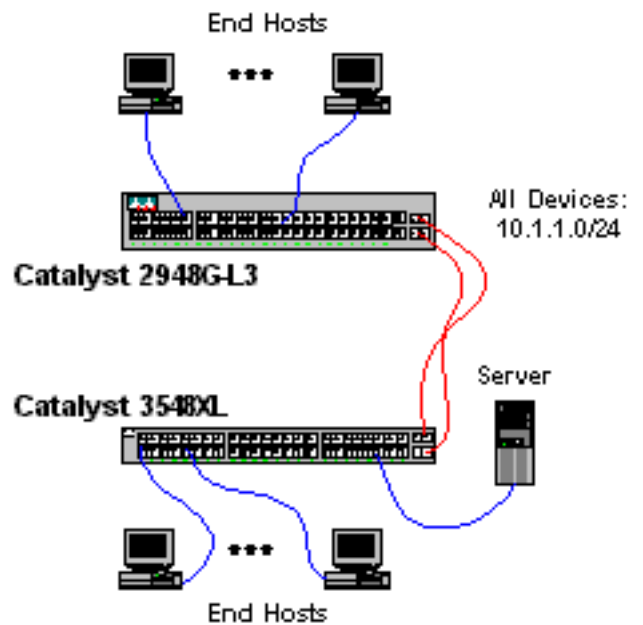
مثال 1- شبكة VLAN واحدة

تتعلق تكوينات الجهاز بالكامل في هذا القسم بالمثال 1: قسم شبكة VLAN الفردية في مستند نماذج Catalyst 2948G-L3.

• تكوين Catalyst 2948G-L3

• تكوين Catalyst 3548XL

شكل 1: مثال 1 شبكة رسم بياني



تكوين Catalyst 2948G-L3

```
2948G-L3# show running-config
...Building configuration

:Current configuration
!
Last configuration change at 04:16:10 PST Thu Jun 22 2000 !
NVRAM config last updated at 04:16:11 PST Thu Jun 22 2000 !
!
version 12.0
no service pad
service timestamps debug datetime msec localtime
service timestamps log datetime msec localtime
no service password-encryption
!
hostname 2948G-L3
!
```

```
boot system flash bootflash:cat2948g-in-mz.120-7.W5.15d.bin
no logging console
enable password verysecret
!
clock timezone PST -8
clock calendar-valid
ip subnet-zero
bridge irb
!
!
!
interface Port-channel1
no ip address
no ip directed-broadcast
bridge-group 1
hold-queue 300 in
!
interface FastEthernet1
no ip address
no ip directed-broadcast
bridge-group 1
bridge-group 1 spanning-disabled
!
interface FastEthernet2
no ip address
no ip directed-broadcast
bridge-group 1
bridge-group 1 spanning-disabled
!
interface FastEthernet3
no ip address
no ip directed-broadcast
bridge-group 1
bridge-group 1 spanning-disabled
!
interface FastEthernet4
no ip address
no ip directed-broadcast
bridge-group 1
bridge-group 1 spanning-disabled
!
interface FastEthernet5
no ip address
no ip directed-broadcast
bridge-group 1
bridge-group 1 spanning-disabled
!
interface FastEthernet6
no ip address
no ip directed-broadcast
bridge-group 1
bridge-group 1 spanning-disabled
!
interface FastEthernet7
no ip address
no ip directed-broadcast
bridge-group 1
bridge-group 1 spanning-disabled
!
interface FastEthernet8
no ip address
no ip directed-broadcast
bridge-group 1
bridge-group 1 spanning-disabled
```

```
!
    interface FastEthernet9
        no ip address
    no ip directed-broadcast
        bridge-group 1
bridge-group 1 spanning-disabled
!
    interface FastEthernet10
        no ip address
    no ip directed-broadcast
        bridge-group 1
bridge-group 1 spanning-disabled
!
    interface FastEthernet11
        no ip address
    no ip directed-broadcast
        bridge-group 1
bridge-group 1 spanning-disabled
!
    interface FastEthernet12
        no ip address
    no ip directed-broadcast
        bridge-group 1
bridge-group 1 spanning-disabled
!
    interface FastEthernet13
        no ip address
    no ip directed-broadcast
        bridge-group 1
bridge-group 1 spanning-disabled
!
    interface FastEthernet14
        no ip address
    no ip directed-broadcast
        bridge-group 1
bridge-group 1 spanning-disabled
!
    interface FastEthernet15
        no ip address
    no ip directed-broadcast
        bridge-group 1
bridge-group 1 spanning-disabled
!
    interface FastEthernet16
        no ip address
    no ip directed-broadcast
        bridge-group 1
bridge-group 1 spanning-disabled
!
    interface FastEthernet17
        no ip address
    no ip directed-broadcast
        bridge-group 1
bridge-group 1 spanning-disabled
!
    interface FastEthernet18
        no ip address
    no ip directed-broadcast
        bridge-group 1
bridge-group 1 spanning-disabled
!
    interface FastEthernet19
        no ip address
    no ip directed-broadcast
```

```
                bridge-group 1
bridge-group 1 spanning-disabled
                !
                interface FastEthernet20
                no ip address
                no ip directed-broadcast
                bridge-group 1
bridge-group 1 spanning-disabled
                !
                interface FastEthernet21
                no ip address
                no ip directed-broadcast
                bridge-group 1
bridge-group 1 spanning-disabled
                !
                interface FastEthernet22
                no ip address
                no ip directed-broadcast
                bridge-group 1
bridge-group 1 spanning-disabled
                !
                interface FastEthernet23
                no ip address
                no ip directed-broadcast
                bridge-group 1
bridge-group 1 spanning-disabled
                !
                interface FastEthernet24
                no ip address
                no ip directed-broadcast
                bridge-group 1
bridge-group 1 spanning-disabled
                !
                interface FastEthernet25
                no ip address
                no ip directed-broadcast
                bridge-group 1
bridge-group 1 spanning-disabled
                !
                interface FastEthernet26
                no ip address
                no ip directed-broadcast
                bridge-group 1
bridge-group 1 spanning-disabled
                !
                interface FastEthernet27
                no ip address
                no ip directed-broadcast
                bridge-group 1
bridge-group 1 spanning-disabled
                !
                interface FastEthernet28
                no ip address
                no ip directed-broadcast
                bridge-group 1
bridge-group 1 spanning-disabled
                !
                interface FastEthernet29
                no ip address
                no ip directed-broadcast
                bridge-group 1
bridge-group 1 spanning-disabled
                !
                interface FastEthernet30
```

```
                no ip address
            no ip directed-broadcast
                bridge-group 1
        bridge-group 1 spanning-disabled
            !
            interface FastEthernet31
                no ip address
            no ip directed-broadcast
                bridge-group 1
        bridge-group 1 spanning-disabled
            !
            interface FastEthernet32
                no ip address
            no ip directed-broadcast
                bridge-group 1
        bridge-group 1 spanning-disabled
            !
            interface FastEthernet33
                no ip address
            no ip directed-broadcast
                bridge-group 1
        bridge-group 1 spanning-disabled
            !
            interface FastEthernet34
                no ip address
            no ip directed-broadcast
                bridge-group 1
        bridge-group 1 spanning-disabled
            !
            interface FastEthernet35
                no ip address
            no ip directed-broadcast
                bridge-group 1
        bridge-group 1 spanning-disabled
            !
            interface FastEthernet36
                no ip address
            no ip directed-broadcast
                bridge-group 1
        bridge-group 1 spanning-disabled
            !
            interface FastEthernet37
                no ip address
            no ip directed-broadcast
                bridge-group 1
        bridge-group 1 spanning-disabled
            !
            interface FastEthernet38
                no ip address
            no ip directed-broadcast
                bridge-group 1
        bridge-group 1 spanning-disabled
            !
            interface FastEthernet39
                no ip address
            no ip directed-broadcast
                bridge-group 1
        bridge-group 1 spanning-disabled
            !
            interface FastEthernet40
                no ip address
            no ip directed-broadcast
            !
            interface FastEthernet41
```

```
        no ip address
    no ip directed-broadcast
        bridge-group 1
bridge-group 1 spanning-disabled
    !
    interface FastEthernet42
        no ip address
    no ip directed-broadcast
        bridge-group 1
bridge-group 1 spanning-disabled
    !
    interface FastEthernet43
        no ip address
    no ip directed-broadcast
        bridge-group 1
bridge-group 1 spanning-disabled
    !
    interface FastEthernet44
        no ip address
    no ip directed-broadcast
        bridge-group 1
bridge-group 1 spanning-disabled
    !
    interface FastEthernet45
        no ip address
    no ip directed-broadcast
        bridge-group 1
bridge-group 1 spanning-disabled
    !
    interface FastEthernet46
        no ip address
    no ip directed-broadcast
        bridge-group 1
bridge-group 1 spanning-disabled
    !
    interface FastEthernet47
        no ip address
    no ip directed-broadcast
        bridge-group 1
bridge-group 1 spanning-disabled
    !
    interface FastEthernet48
        no ip address
    no ip directed-broadcast
        bridge-group 1
bridge-group 1 spanning-disabled
    !
    interface GigabitEthernet49
        no ip address
    no ip directed-broadcast
        no negotiation auto
        channel-group 1
    !
    interface GigabitEthernet50
        no ip address
    no ip directed-broadcast
        no negotiation auto
        channel-group 1
    !
    interface BVI1
ip address 10.1.1.1 255.255.255.0
    no ip directed-broadcast
    no ip route-cache cef
    !
```

```
        ip classless
        !
    bridge 1 protocol ieee
        bridge 1 route ip
        !
        line con 0
    transport input none
        line aux 0
        line vty 0 4
    password secret
        login
        !
    end

2948G-L3#
```

[Catalyst 3548XL تكوين](#)

```
3548XL# show running-config
...Building configuration

:Current configuration
!
Last configuration change at 04:09:54 PST Thu Jun 22 2000 !
NVRAM config last updated at 04:01:04 PST Thu Jun 22 2000 !
!
    version 12.0
    no service pad
    service timestamps debug datetime msec localtime
    service timestamps log datetime msec localtime
    no service password-encryption
    !
    hostname 3548XL
    !
    no logging console
    enable password verysecret
    !
    !
    !
    !
    clock timezone PST -8
    !
    ip subnet-zero
    !
    !
    !
    interface FastEthernet0/1
    spanning-tree portfast
    !
    interface FastEthernet0/2
    spanning-tree portfast
    !
    interface FastEthernet0/3
    spanning-tree portfast
    !
    interface FastEthernet0/4
    spanning-tree portfast
    !
    interface FastEthernet0/5
```



```
spanning-tree portfast
!
interface FastEthernet0/6
spanning-tree portfast
!
interface FastEthernet0/7
spanning-tree portfast
!
interface FastEthernet0/8
spanning-tree portfast
!
interface FastEthernet0/9
spanning-tree portfast
!
interface FastEthernet0/10
spanning-tree portfast
!
interface FastEthernet0/11
spanning-tree portfast
!
interface FastEthernet0/12
spanning-tree portfast
!
interface FastEthernet0/13
spanning-tree portfast
!
interface FastEthernet0/14
spanning-tree portfast
!
interface FastEthernet0/15
spanning-tree portfast
!
interface FastEthernet0/16
spanning-tree portfast
!
interface FastEthernet0/17
spanning-tree portfast
!
interface FastEthernet0/18
spanning-tree portfast
!
interface FastEthernet0/19
spanning-tree portfast
!
interface FastEthernet0/20
spanning-tree portfast
!
interface FastEthernet0/21
spanning-tree portfast
!
interface FastEthernet0/22
spanning-tree portfast
!
interface FastEthernet0/23
spanning-tree portfast
!
interface FastEthernet0/24
spanning-tree portfast
!
interface FastEthernet0/25
spanning-tree portfast
!
interface FastEthernet0/26
spanning-tree portfast
```

```
!
interface FastEthernet0/27
  spanning-tree portfast
!
interface FastEthernet0/28
  spanning-tree portfast
!
interface FastEthernet0/29
  spanning-tree portfast
!
interface FastEthernet0/30
  spanning-tree portfast
!
interface FastEthernet0/31
  spanning-tree portfast
!
interface FastEthernet0/32
  spanning-tree portfast
!
interface FastEthernet0/33
  spanning-tree portfast
!
interface FastEthernet0/34
  spanning-tree portfast
!
interface FastEthernet0/35
  spanning-tree portfast
!
interface FastEthernet0/36
  spanning-tree portfast
!
interface FastEthernet0/37
  spanning-tree portfast
!
interface FastEthernet0/38
  spanning-tree portfast
!
interface FastEthernet0/39
  spanning-tree portfast
!
interface FastEthernet0/40
  spanning-tree portfast
!
interface FastEthernet0/41
  spanning-tree portfast
!
interface FastEthernet0/42
  spanning-tree portfast
!
interface FastEthernet0/43
  spanning-tree portfast
!
interface FastEthernet0/44
  spanning-tree portfast
!
interface FastEthernet0/45
  spanning-tree portfast
!
interface FastEthernet0/46
  spanning-tree portfast
!
interface FastEthernet0/47
  spanning-tree portfast
!
```

```
interface FastEthernet0/48
  spanning-tree portfast
  !
interface GigabitEthernet0/1
  no negotiation auto
  port group 1
  !
interface GigabitEthernet0/2
  no negotiation auto
  port group 1
  !
interface VLAN1
ip address 10.1.1.2 255.255.255.0
  no ip directed-broadcast
  no ip route-cache
  !
  !
  line con 0
  transport input none
  stopbits 1
  line vty 0 4
  password secret
  login
  line vty 5 15
  login
  !
end

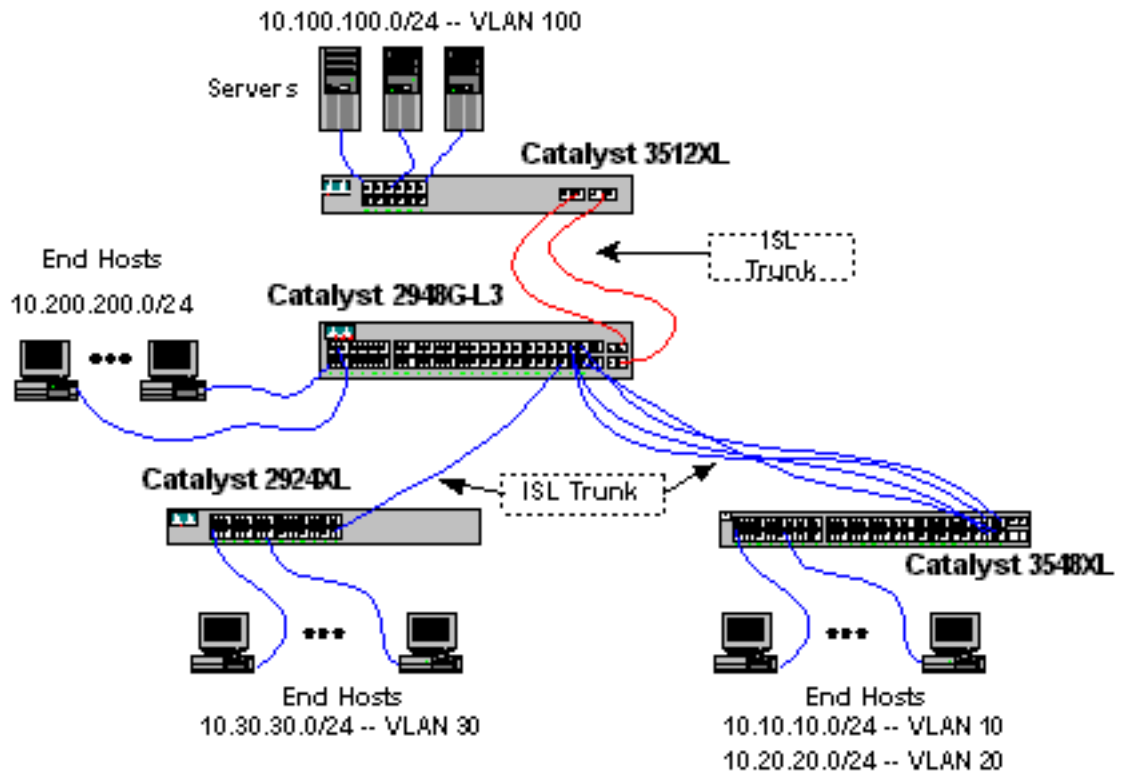
#3548XL
```

مثال 2—شبكة متعددة شبكات VLAN

تكون تكوينات الجهاز الكامل في هذا القسم على سبيل المثال 2: شبكة VLAN المتعددة من نموذج تكوينات Catalyst 2948G-L3.

- تكوين Catalyst 2948G-L3
- تكوين Catalyst 3512XL
- تكوين Catalyst 2924XL
- تكوين Catalyst 3548XL

شكل 2: مثال 2 شبكة رسم بياني



Catalyst 2948G-L3 تكوين

```
2948G-L3# show running-config
...Building configuration
```

```

:Current configuration
!
Last configuration change at 04:48:24 PST Thu Jun 22 2000 !
NVRAM config last updated at 04:45:02 PST Thu Jun 22 2000 !
!
version 12.0
no service pad
service timestamps debug datetime msec localtime
service timestamps log datetime msec localtime
no service password-encryption
!
hostname 2948G-L3
!
no logging console
enable password verysecret
!
clock timezone PST -8
clock calendar-valid
ip subnet-zero
bridge irb
!
!
!
interface Port-channel1
no ip address
no ip directed-broadcast
hold-queue 300 in
!
interface Port-channel1.1

```

```
        encapsulation isl 1
        no ip redirects
no ip directed-broadcast
        bridge-group 1
    !
interface Port-channel1.100
    encapsulation isl 100
ip address 10.100.100.1 255.255.255.0
    no ip redirects
no ip directed-broadcast
    !
interface Port-channel2
    no ip address
no ip directed-broadcast
    hold-queue 300 in
    !
interface Port-channel2.1
    encapsulation isl 1
    no ip redirects
no ip directed-broadcast
    bridge-group 1
    !
interface Port-channel2.10
    encapsulation isl 10
ip address 10.10.10.1 255.255.255.0
    no ip redirects
no ip directed-broadcast
    !
interface Port-channel2.20
    encapsulation isl 20
ip address 10.20.20.1 255.255.255.0
    no ip redirects
no ip directed-broadcast
    !
interface FastEthernet1
    no ip address
no ip directed-broadcast
    bridge-group 200
bridge-group 200 spanning-disabled
    !
interface FastEthernet2
    no ip address
no ip directed-broadcast
    bridge-group 200
bridge-group 200 spanning-disabled
    !
interface FastEthernet3
    no ip address
no ip directed-broadcast
    bridge-group 200
bridge-group 200 spanning-disabled
    !
interface FastEthernet4
    no ip address
no ip directed-broadcast
    bridge-group 200
bridge-group 200 spanning-disabled
    !
interface FastEthernet5
    no ip address
no ip directed-broadcast
    bridge-group 200
bridge-group 200 spanning-disabled
    !
```

```
        interface FastEthernet6
            no ip address
        no ip directed-broadcast
            bridge-group 200
        bridge-group 200 spanning-disabled
        !
        interface FastEthernet7
            no ip address
        no ip directed-broadcast
            bridge-group 200
        bridge-group 200 spanning-disabled
        !
        interface FastEthernet8
            no ip address
        no ip directed-broadcast
            bridge-group 200
        bridge-group 200 spanning-disabled
        !
        interface FastEthernet9
            no ip address
        no ip directed-broadcast
            bridge-group 200
        bridge-group 200 spanning-disabled
        !
        interface FastEthernet10
            no ip address
        no ip directed-broadcast
            bridge-group 200
        bridge-group 200 spanning-disabled
        !
        interface FastEthernet11
            no ip address
        no ip directed-broadcast
            bridge-group 200
        bridge-group 200 spanning-disabled
        !
        interface FastEthernet12
            no ip address
        no ip directed-broadcast
            bridge-group 200
        bridge-group 200 spanning-disabled
        !
        interface FastEthernet13
            no ip address
        no ip directed-broadcast
            bridge-group 200
        bridge-group 200 spanning-disabled
        !
        interface FastEthernet14
            no ip address
        no ip directed-broadcast
            bridge-group 200
        bridge-group 200 spanning-disabled
        !
        interface FastEthernet15
            no ip address
        no ip directed-broadcast
            bridge-group 200
        bridge-group 200 spanning-disabled
        !
        interface FastEthernet16
            no ip address
        no ip directed-broadcast
            bridge-group 200
```

```
bridge-group 200 spanning-disabled
!
    interface FastEthernet17
        no ip address
    no ip directed-broadcast
        bridge-group 200
bridge-group 200 spanning-disabled
!
    interface FastEthernet18
        no ip address
    no ip directed-broadcast
        bridge-group 200
bridge-group 200 spanning-disabled
!
    interface FastEthernet19
        no ip address
    no ip directed-broadcast
        bridge-group 200
bridge-group 200 spanning-disabled
!
    interface FastEthernet20
        no ip address
    no ip directed-broadcast
        bridge-group 200
bridge-group 200 spanning-disabled
!
    interface FastEthernet21
        no ip address
    no ip directed-broadcast
        bridge-group 200
bridge-group 200 spanning-disabled
!
    interface FastEthernet22
        no ip address
    no ip directed-broadcast
        bridge-group 200
bridge-group 200 spanning-disabled
!
    interface FastEthernet23
        no ip address
    no ip directed-broadcast
        bridge-group 200
bridge-group 200 spanning-disabled
!
    interface FastEthernet24
        no ip address
    no ip directed-broadcast
        bridge-group 200
bridge-group 200 spanning-disabled
!
    interface FastEthernet25
        no ip address
    no ip directed-broadcast
        bridge-group 200
bridge-group 200 spanning-disabled
!
    interface FastEthernet26
        no ip address
    no ip directed-broadcast
        bridge-group 200
bridge-group 200 spanning-disabled
!
    interface FastEthernet27
        no ip address
```

```
        no ip directed-broadcast
            bridge-group 200
    bridge-group 200 spanning-disabled
    !
    interface FastEthernet28
        no ip address
    no ip directed-broadcast
        bridge-group 200
    bridge-group 200 spanning-disabled
    !
    interface FastEthernet29
        no ip address
    no ip directed-broadcast
        bridge-group 200
    bridge-group 200 spanning-disabled
    !
    interface FastEthernet30
        no ip address
    no ip directed-broadcast
        bridge-group 200
    bridge-group 200 spanning-disabled
    !
    interface FastEthernet31
        no ip address
    no ip directed-broadcast
        bridge-group 200
    bridge-group 200 spanning-disabled
    !
    interface FastEthernet32
        no ip address
    no ip directed-broadcast
        bridge-group 200
    bridge-group 200 spanning-disabled
    !
    interface FastEthernet33
        no ip address
    no ip directed-broadcast
        bridge-group 200
    bridge-group 200 spanning-disabled
    !
    interface FastEthernet34
        no ip address
    no ip directed-broadcast
        bridge-group 200
    bridge-group 200 spanning-disabled
    !
    interface FastEthernet35
        no ip address
    no ip directed-broadcast
        bridge-group 200
    bridge-group 200 spanning-disabled
    !
    interface FastEthernet36
        no ip address
    no ip directed-broadcast
        bridge-group 200
    bridge-group 200 spanning-disabled
    !
    interface FastEthernet37
        no ip address
    no ip directed-broadcast
        bridge-group 200
    bridge-group 200 spanning-disabled
    !
```



```
        interface FastEthernet38
            no ip address
        no ip directed-broadcast
            bridge-group 200
        bridge-group 200 spanning-disabled
        !
        interface FastEthernet39
            no ip address
        no ip directed-broadcast
            bridge-group 200
        bridge-group 200 spanning-disabled
        !
        interface FastEthernet40
            no ip address
        no ip directed-broadcast
            bridge-group 200
        bridge-group 200 spanning-disabled
        !
        interface FastEthernet41
            no ip address
        no ip directed-broadcast
            bridge-group 200
        bridge-group 200 spanning-disabled
        !
        interface FastEthernet42
            no ip address
        no ip directed-broadcast
            bridge-group 200
        bridge-group 200 spanning-disabled
        !
        interface FastEthernet43
            no ip address
        no ip directed-broadcast
            bridge-group 200
        bridge-group 200 spanning-disabled
        !
        interface FastEthernet44
            no ip address
        no ip directed-broadcast
        !
        interface FastEthernet44.1
            encapsulation isl 1
            no ip redirects
        no ip directed-broadcast
            bridge-group 1
        !
        interface FastEthernet44.30
            encapsulation isl 30
        ip address 10.30.30.1 255.255.255.0
            no ip redirects
        no ip directed-broadcast
        !
        interface FastEthernet45
            no ip address
        no ip directed-broadcast
            channel-group 2
        !
        interface FastEthernet46
            no ip address
        no ip directed-broadcast
            channel-group 2
        !
        interface FastEthernet47
            no ip address
```

```

no ip directed-broadcast
    channel-group 2
!
interface FastEthernet48
    no ip address
no ip directed-broadcast
    channel-group 2
!
interface GigabitEthernet49
    no ip address
no ip directed-broadcast
    no negotiation auto
    channel-group 1
!
interface GigabitEthernet50
    no ip address
no ip directed-broadcast
    no negotiation auto
    channel-group 1
!
interface BVI1
ip address 10.1.1.1 255.255.255.0
no ip directed-broadcast
no ip route-cache cef
!
interface BVI200
ip address 10.200.200.1 255.255.255.0
no ip directed-broadcast
no ip route-cache cef
!
ip classless
!
bridge 1 protocol ieee
    bridge 1 route ip
bridge 200 protocol ieee
    bridge 200 route ip
!
line con 0
transport input none
line aux 0
line vty 0 4
password secret
    login
!
end

2948G-L3#

```

[Catalyst 3512XL تکوین](#)

```

3512XL# show running-config
...Building configuration

:Current configuration
!
Last configuration change at 12:52:31 PST Thu Jun 22 2000 !
NVRAM config last updated at 12:52:32 PST Thu Jun 22 2000 !
!
version 12.0
no service pad
service timestamps debug datetime msec localtime

```

```
service timestamps log datetime msec localtime
no service password-encryption
!
hostname 3512XL
!
no logging console
enable password verysecret
!
!
!
!
clock timezone PST -8
!
ip subnet-zero
!
!
!
interface FastEthernet0/1
switchport access vlan 100
spanning-tree portfast
!
interface FastEthernet0/2
switchport access vlan 100
spanning-tree portfast
!
interface FastEthernet0/3
switchport access vlan 100
spanning-tree portfast
!
interface FastEthernet0/4
switchport access vlan 100
spanning-tree portfast
!
interface FastEthernet0/5
switchport access vlan 100
spanning-tree portfast
!
interface FastEthernet0/6
switchport access vlan 100
spanning-tree portfast
!
interface FastEthernet0/7
switchport access vlan 100
spanning-tree portfast
!
interface FastEthernet0/8
switchport access vlan 100
spanning-tree portfast
!
interface FastEthernet0/9
switchport access vlan 100
spanning-tree portfast
!
interface FastEthernet0/10
switchport access vlan 100
spanning-tree portfast
!
interface FastEthernet0/11
switchport access vlan 100
spanning-tree portfast
!
interface FastEthernet0/12
switchport access vlan 100
```

```

spanning-tree portfast
!
interface GigabitEthernet0/1
    no negotiation auto
    port group 1
    switchport mode trunk
!
interface GigabitEthernet0/2
    no negotiation auto
    port group 1
    switchport mode trunk
!
interface VLAN1
ip address 10.1.1.2 255.255.255.0
    no ip directed-broadcast
    no ip route-cache
!
ip default-gateway 10.1.1.1
!
line con 0
    transport input none
    stopbits 1
line vty 0 4
    password secret
    login
line vty 5 15
    login
!
end

#3512XL

```

[تكوين Catalyst 2924XL](#)

```

2924XL# show running-config
...Building configuration

```

```

:Current configuration
!
Last configuration change at 12:58:30 PST Thu Jun 22 2000 !
NVRAM config last updated at 12:58:40 PST Thu Jun 22 2000 !
!
version 12.0
no service pad
service timestamps debug datetime msec localtime
service timestamps log datetime msec localtime
no service password-encryption
!
hostname 2924XL
!
no logging console
enable password verysecret
!
!
!
!
clock timezone PST -8
!
ip subnet-zero
!

```

```
!
!
interface FastEthernet0/1
switchport access vlan 30
spanning-tree portfast
!
interface FastEthernet0/2
switchport access vlan 30
spanning-tree portfast
!
interface FastEthernet0/3
switchport access vlan 30
spanning-tree portfast
!
interface FastEthernet0/4
switchport access vlan 30
spanning-tree portfast
!
interface FastEthernet0/5
switchport access vlan 30
spanning-tree portfast
!
interface FastEthernet0/6
switchport access vlan 30
spanning-tree portfast
!
interface FastEthernet0/7
switchport access vlan 30
spanning-tree portfast
!
interface FastEthernet0/8
switchport access vlan 30
spanning-tree portfast
!
interface FastEthernet0/9
switchport access vlan 30
spanning-tree portfast
!
interface FastEthernet0/10
switchport access vlan 30
spanning-tree portfast
!
interface FastEthernet0/11
switchport access vlan 30
spanning-tree portfast
!
interface FastEthernet0/12
switchport access vlan 30
spanning-tree portfast
!
interface FastEthernet0/13
switchport access vlan 30
spanning-tree portfast
!
interface FastEthernet0/14
switchport access vlan 30
spanning-tree portfast
!
interface FastEthernet0/15
switchport access vlan 30
spanning-tree portfast
!
interface FastEthernet0/16
switchport access vlan 30
```

```

spanning-tree portfast
!
interface FastEthernet0/17
switchport access vlan 30
spanning-tree portfast
!
interface FastEthernet0/18
switchport access vlan 30
spanning-tree portfast
!
interface FastEthernet0/19
switchport access vlan 30
spanning-tree portfast
!
interface FastEthernet0/20
switchport access vlan 30
spanning-tree portfast
!
interface FastEthernet0/21
switchport access vlan 30
spanning-tree portfast
!
interface FastEthernet0/22
switchport access vlan 30
spanning-tree portfast
!
interface FastEthernet0/23
switchport access vlan 30
spanning-tree portfast
!
interface FastEthernet0/24
switchport mode trunk
!
interface VLAN1
ip address 10.1.1.4 255.255.255.0
no ip directed-broadcast
no ip route-cache
!
ip default-gateway 10.1.1.1
!
line con 0
transport input none
stopbits 1
line vty 0 4
password secret
login
line vty 5 15
login
!
end

#2924XL

```

[Catalyst 3548XL تكوين](#)

```

3548XL# show running-config
...Building configuration

:Current configuration
!

```

Last configuration change at 12:56:22 PST Thu Jun 22 2000 !

```
NVRAM config last updated at 12:56:23 PST Thu Jun 22 2000 !
!
    version 12.0
    no service pad
service timestamps debug datetime msec localtime
service timestamps log datetime msec localtime
    no service password-encryption
!
    hostname 3548XL
!
    no logging console
enable password verysecret
!
!
!
!
    clock timezone PST -8
!
    ip subnet-zero
!
!
!
    interface FastEthernet0/1
switchport access vlan 10
    spanning-tree portfast
!
    interface FastEthernet0/2
switchport access vlan 10
    spanning-tree portfast
!
    interface FastEthernet0/3
switchport access vlan 10
    spanning-tree portfast
!
    interface FastEthernet0/4
switchport access vlan 10
    spanning-tree portfast
!
    interface FastEthernet0/5
switchport access vlan 10
    spanning-tree portfast
!
    interface FastEthernet0/6
switchport access vlan 10
    spanning-tree portfast
!
    interface FastEthernet0/7
switchport access vlan 10
    spanning-tree portfast
!
    interface FastEthernet0/8
switchport access vlan 10
    spanning-tree portfast
!
    interface FastEthernet0/9
switchport access vlan 10
    spanning-tree portfast
!
    interface FastEthernet0/10
switchport access vlan 10
    spanning-tree portfast
!
    interface FastEthernet0/11
```

```
switchport access vlan 10
    spanning-tree portfast
    !
interface FastEthernet0/12
switchport access vlan 10
    spanning-tree portfast
    !
interface FastEthernet0/13
switchport access vlan 10
    spanning-tree portfast
    !
interface FastEthernet0/14
switchport access vlan 10
    spanning-tree portfast
    !
interface FastEthernet0/15
switchport access vlan 10
    spanning-tree portfast
    !
interface FastEthernet0/16
switchport access vlan 10
    spanning-tree portfast
    !
interface FastEthernet0/17
switchport access vlan 10
    spanning-tree portfast
    !
interface FastEthernet0/18
switchport access vlan 10
    spanning-tree portfast
    !
interface FastEthernet0/19
switchport access vlan 10
    spanning-tree portfast
    !
interface FastEthernet0/20
switchport access vlan 10
    spanning-tree portfast
    !
interface FastEthernet0/21
switchport access vlan 10
    spanning-tree portfast
    !
interface FastEthernet0/22
switchport access vlan 10
    spanning-tree portfast
    !
interface FastEthernet0/23
switchport access vlan 10
    spanning-tree portfast
    !
interface FastEthernet0/24
switchport access vlan 10
    spanning-tree portfast
    !
interface FastEthernet0/25
switchport access vlan 20
    spanning-tree portfast
    !
interface FastEthernet0/26
switchport access vlan 20
    spanning-tree portfast
    !
interface FastEthernet0/27
```



```
switchport access vlan 20
    spanning-tree portfast
!
interface FastEthernet0/28
switchport access vlan 20
    spanning-tree portfast
!
interface FastEthernet0/29
switchport access vlan 20
    spanning-tree portfast
!
interface FastEthernet0/30
switchport access vlan 20
    spanning-tree portfast
!
interface FastEthernet0/31
switchport access vlan 20
    spanning-tree portfast
!
interface FastEthernet0/32
switchport access vlan 20
    spanning-tree portfast
!
interface FastEthernet0/33
switchport access vlan 20
    spanning-tree portfast
!
interface FastEthernet0/34
switchport access vlan 20
    spanning-tree portfast
!
interface FastEthernet0/35
switchport access vlan 20
    spanning-tree portfast
!
interface FastEthernet0/36
switchport access vlan 20
    spanning-tree portfast
!
interface FastEthernet0/37
switchport access vlan 20
    spanning-tree portfast
!
interface FastEthernet0/38
switchport access vlan 20
    spanning-tree portfast
!
interface FastEthernet0/39
switchport access vlan 20
    spanning-tree portfast
!
interface FastEthernet0/40
switchport access vlan 20
    spanning-tree portfast
!
interface FastEthernet0/41
switchport access vlan 20
    spanning-tree portfast
!
interface FastEthernet0/42
switchport access vlan 20
    spanning-tree portfast
!
interface FastEthernet0/43
```

```

switchport access vlan 20
spanning-tree portfast
!
interface FastEthernet0/44
switchport access vlan 20
spanning-tree portfast
!
interface FastEthernet0/45
port group 1
switchport mode trunk
!
interface FastEthernet0/46
port group 1
switchport mode trunk
!
interface FastEthernet0/47
port group 1
switchport mode trunk
!
interface FastEthernet0/48
port group 1
switchport mode trunk
!
interface GigabitEthernet0/1
!
interface GigabitEthernet0/2
!
interface VLAN1
ip address 10.1.1.3 255.255.255.0
no ip directed-broadcast
no ip route-cache
!
ip default-gateway 10.1.1.1
!
line con 0
transport input none
stopbits 1
line vty 0 4
password secret
login
line vty 5 15
login
!
end

#3548XL

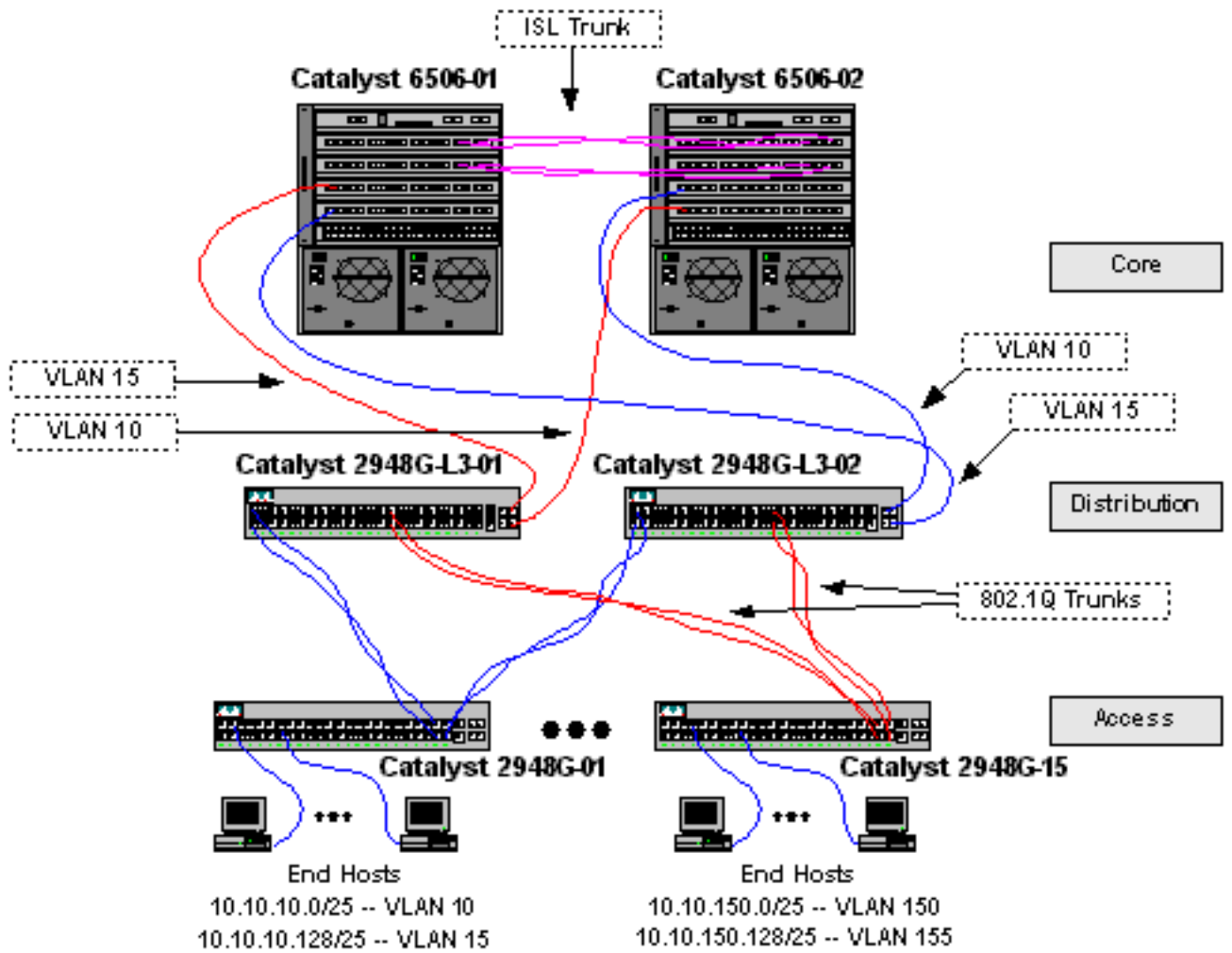
```

المثال 3- طبقة التوزيع متعددة شبكات VLAN التي تتصل بمركز الشبكة

تتعلق تكوينات الجهاز بالكامل في هذا القسم بالمثال 3: طبقة التوزيع متعددة شبكات VLAN المتصلة بجوهر الشبكة من عمليات تكوين نموذج Catalyst 2948G-L3.

- [تكوين Catalyst 2948G-L3-01](#)
- [تكوين Catalyst 2948G-L3-02](#)
- [تكوين Catalyst 2948G-01](#)
- [تكوين Catalyst 2948G-15](#)
- [تكوين Catalyst 6506-01](#)
- [تكوين Catalyst 6506-02](#)

شكل 3: مثال 3 شبكة رسم بياني



تكوين Catalyst 2948G-L3-01

```

2948G-L3-01# show running-config
...Building configuration

:Current configuration
!
Last configuration change at 07:30:32 PST Fri Jun 23 2000 !
NVRAM config last updated at 07:30:33 PST Fri Jun 23 2000 !
!
version 12.0
no service pad
service timestamps debug datetime msec localtime
service timestamps log datetime msec localtime
no service password-encryption
!
hostname 2948G-L3-01
!
no logging console
enable password verysecret
!
clock timezone PST -8
clock calendar-valid
ip subnet-zero
!
!

```

```

!
interface Port-channel1
description Channel_to_2948G-01
no ip address
no ip directed-broadcast
hold-queue 300 in
!
interface Port-channel1.1
encapsulation dot1Q 1 native
no ip redirects
no ip directed-broadcast
!
interface Port-channel1.10
encapsulation dot1Q 10
ip address 10.10.10.2 255.255.255.128
no ip redirects
no ip directed-broadcast
standby 10 priority 100
standby 10 preempt
standby 10 authentication C10-10
standby 10 ip 10.10.10.1
standby 10 track GigabitEthernet49 20
standby 10 track GigabitEthernet50 20
!
interface Port-channel1.15
encapsulation dot1Q 15
ip address 10.10.10.130 255.255.255.128
no ip redirects
no ip directed-broadcast
standby 15 priority 110
standby 15 preempt
standby 15 authentication C10-15
standby 15 ip 10.10.10.129
standby 15 track GigabitEthernet49 20
standby 15 track GigabitEthernet50 20
!
interface Port-channel2
description Channel_to_2948G-02
no ip address
no ip directed-broadcast
hold-queue 300 in
!
interface Port-channel2.1
encapsulation dot1Q 1 native
no ip redirects
no ip directed-broadcast
!
interface Port-channel2.20
encapsulation dot1Q 20
ip address 10.10.20.2 255.255.255.128
no ip redirects
no ip directed-broadcast
standby 20 priority 100
standby 20 preempt
standby 20 authentication C10-20
standby 20 ip 10.10.20.1
standby 20 track GigabitEthernet49 20
standby 20 track GigabitEthernet50 20
!
interface Port-channel2.25
encapsulation dot1Q 25
ip address 10.10.20.130 255.255.255.128
no ip redirects
no ip directed-broadcast

```

```
        standby 25 priority 110
        standby 25 preempt
    standby 25 authentication C10-25
        standby 25 ip 10.10.20.129
    standby 25 track GigabitEthernet49 20
    standby 25 track GigabitEthernet50 20
    !
    interface Port-channel3
    description Channel_to_2948G-03
        no ip address
        no ip directed-broadcast
        hold-queue 300 in
    !
    interface Port-channel3.1
    encapsulation dot1Q 1 native
        no ip redirects
        no ip directed-broadcast
    !
    interface Port-channel3.30
    encapsulation dot1Q 30
    ip address 10.10.30.2 255.255.255.128
        no ip redirects
        no ip directed-broadcast
        standby 30 priority 100
        standby 30 preempt
    standby 30 authentication C10-30
        standby 30 ip 10.10.30.1
    standby 30 track GigabitEthernet49 20
    standby 30 track GigabitEthernet50 20
    !
    interface Port-channel3.35
    encapsulation dot1Q 35
    ip address 10.10.30.130 255.255.255.128
        no ip redirects
        no ip directed-broadcast
        standby 35 priority 110
        standby 35 preempt
    standby 35 authentication C10-35
        standby 35 ip 10.10.30.129
    standby 35 track GigabitEthernet49 20
    standby 35 track GigabitEthernet50 20
    !
    interface Port-channel4
    description Channel_to_2948G-04
        no ip address
        no ip directed-broadcast
        hold-queue 300 in
    !
    interface Port-channel4.1
    encapsulation dot1Q 1 native
        no ip redirects
        no ip directed-broadcast
    !
    interface Port-channel4.40
    encapsulation dot1Q 40
    ip address 10.10.40.2 255.255.255.128
        no ip redirects
        no ip directed-broadcast
        standby 40 priority 100
        standby 40 preempt
    standby 40 authentication C10-40
        standby 40 ip 10.10.40.1
    standby 40 track GigabitEthernet49 20
    standby 40 track GigabitEthernet50 20
```

```

!
interface Port-channel4.45
    encapsulation dot1Q 45
ip address 10.10.40.130 255.255.255.128
    no ip redirects
    no ip directed-broadcast
    standby 45 priority 110
    standby 45 preempt
    standby 45 authentication C10-45
    standby 45 ip 10.10.40.129
standby 45 track GigabitEthernet49 20
standby 45 track GigabitEthernet50 20
!
interface Port-channel5
description Channel_to_2948G-05
    no ip address
    no ip directed-broadcast
    hold-queue 300 in
!
interface Port-channel5.1
encapsulation dot1Q 1 native
    no ip redirects
    no ip directed-broadcast
!
interface Port-channel5.50
    encapsulation dot1Q 50
ip address 10.10.50.2 255.255.255.128
    no ip redirects
    no ip directed-broadcast
    standby 50 priority 100
    standby 50 preempt
    standby 50 authentication C10-50
    standby 50 ip 10.10.50.1
standby 50 track GigabitEthernet49 20
standby 50 track GigabitEthernet50 20
!
interface Port-channel5.55
    encapsulation dot1Q 55
ip address 10.10.50.130 255.255.255.128
    no ip redirects
    no ip directed-broadcast
    standby 55 priority 110
    standby 55 preempt
    standby 55 authentication C10-55
    standby 55 ip 10.10.50.129
standby 55 track GigabitEthernet49 20
standby 55 track GigabitEthernet50 20
!
interface Port-channel6
description Channel_to_2948G-06
    no ip address
    no ip directed-broadcast
    hold-queue 300 in
!
interface Port-channel6.1
encapsulation dot1Q 1 native
    no ip redirects
    no ip directed-broadcast
!
interface Port-channel6.60
    encapsulation dot1Q 60
ip address 10.10.60.2 255.255.255.128
    no ip redirects
    no ip directed-broadcast

```

```
        standby 60 priority 100
        standby 60 preempt
    standby 60 authentication C10-60
        standby 60 ip 10.10.60.1
    standby 60 track GigabitEthernet49 20
    standby 60 track GigabitEthernet50 20
    !
    interface Port-channel6.65
        encapsulation dot1Q 65
    ip address 10.10.60.130 255.255.255.128
        no ip redirects
        no ip directed-broadcast
        standby 65 priority 110
        standby 65 preempt
    standby 65 authentication C10-65
        standby 65 ip 10.10.60.129
    standby 65 track GigabitEthernet49 20
    standby 65 track GigabitEthernet50 20
    !
    interface Port-channel7
    description Channel_to_2948G-07
        no ip address
        no ip directed-broadcast
        hold-queue 300 in
    !
    interface Port-channel7.1
    encapsulation dot1Q 1 native
        no ip redirects
        no ip directed-broadcast
    !
    interface Port-channel7.70
        encapsulation dot1Q 70
    ip address 10.10.70.2 255.255.255.128
        no ip redirects
        no ip directed-broadcast
        standby 70 priority 100
        standby 70 preempt
    standby 70 authentication C10-70
        standby 70 ip 10.10.70.1
    standby 70 track GigabitEthernet49 20
    standby 70 track GigabitEthernet50 20
    !
    interface Port-channel7.75
        encapsulation dot1Q 75
    ip address 10.10.70.130 255.255.255.128
        no ip redirects
        no ip directed-broadcast
        standby 75 priority 110
        standby 75 preempt
    standby 75 authentication C10-75
        standby 75 ip 10.10.70.129
    standby 75 track GigabitEthernet49 20
    standby 75 track GigabitEthernet50 20
    !
    interface Port-channel8
    description Channel_to_2948G-08
        no ip address
        no ip directed-broadcast
        hold-queue 300 in
    !
    interface Port-channel8.1
    encapsulation dot1Q 1 native
        no ip redirects
        no ip directed-broadcast
```

```
!
interface Port-channel8.80
    encapsulation dot1Q 80
ip address 10.10.80.2 255.255.255.128
    no ip redirects
    no ip directed-broadcast
    standby 80 priority 100
    standby 80 preempt
    standby 80 authentication C10-80
    standby 80 ip 10.10.80.1
standby 80 track GigabitEthernet49 20
standby 80 track GigabitEthernet50 20
!
interface Port-channel8.85
    encapsulation dot1Q 85
ip address 10.10.80.130 255.255.255.128
    no ip redirects
    no ip directed-broadcast
    standby 85 priority 110
    standby 85 preempt
    standby 85 authentication C10-85
    standby 85 ip 10.10.80.129
standby 85 track GigabitEthernet49 20
standby 85 track GigabitEthernet50 20
!
interface Port-channel9
description Channel_to_2948G-09
    no ip address
    no ip directed-broadcast
    hold-queue 300 in
!
interface Port-channel9.1
encapsulation dot1Q 1 native
    no ip redirects
    no ip directed-broadcast
!
interface Port-channel9.90
    encapsulation dot1Q 90
ip address 10.10.90.2 255.255.255.128
    no ip redirects
    no ip directed-broadcast
    standby 90 priority 100
    standby 90 preempt
    standby 90 authentication C10-90
    standby 90 ip 10.10.90.1
standby 90 track GigabitEthernet49 20
standby 90 track GigabitEthernet50 20
!
interface Port-channel9.95
    encapsulation dot1Q 95
ip address 10.10.90.130 255.255.255.128
    no ip redirects
    no ip directed-broadcast
    standby 95 priority 110
    standby 95 preempt
    standby 95 authentication C10-95
    standby 95 ip 10.10.90.129
standby 95 track GigabitEthernet49 20
standby 95 track GigabitEthernet50 20
!
interface Port-channel10
description Channel_to_2948G-10
    no ip address
    no ip directed-broadcast
```



```

        hold-queue 300 in
        !
        interface Port-channel10.1
        encapsulation dot1Q 1 native
        no ip redirects
        no ip directed-broadcast
        !
        interface Port-channel10.100
        encapsulation dot1Q 100
        ip address 10.10.100.2 255.255.255.128
        no ip redirects
        no ip directed-broadcast
        standby 100 priority 100
        standby 100 preempt
        standby 100 authentication C10-100
        standby 100 ip 10.10.100.1
        standby 100 track GigabitEthernet49 20
        standby 100 track GigabitEthernet50 20
        !
        interface Port-channel10.105
        encapsulation dot1Q 105
        ip address 10.10.100.130 255.255.255.128
        no ip redirects
        no ip directed-broadcast
        standby 105 priority 110
        standby 105 preempt
        standby 105 authentication C10-105
        standby 105 ip 10.10.100.129
        standby 105 track GigabitEthernet49 20
        standby 105 track GigabitEthernet50 20
        !
        interface Port-channel11
        description Channel_to_2948G-11
        no ip address
        no ip directed-broadcast
        hold-queue 300 in
        !
        interface Port-channel11.1
        encapsulation dot1Q 1 native
        no ip redirects
        no ip directed-broadcast
        !
        interface Port-channel11.110
        encapsulation dot1Q 110
        ip address 10.10.110.2 255.255.255.128
        no ip redirects
        no ip directed-broadcast
        standby 110 priority 100
        standby 110 preempt
        standby 110 authentication C10-110
        standby 110 ip 10.10.110.1
        standby 110 track GigabitEthernet49 20
        standby 110 track GigabitEthernet50 20
        !
        interface Port-channel11.115
        encapsulation dot1Q 115
        ip address 10.10.110.130 255.255.255.128
        no ip redirects
        no ip directed-broadcast
        standby 115 priority 110
        standby 115 preempt
        standby 115 authentication C10-115
        standby 115 ip 10.10.110.129
        standby 115 track GigabitEthernet49 20

```

```
standby 115 track GigabitEthernet50 20
!
    interface Port-channel12
description Channel_to_2948G-12
    no ip address
    no ip directed-broadcast
    hold-queue 300 in
!
    interface Port-channel12.1
encapsulation dot1Q 1 native
    no ip redirects
    no ip directed-broadcast
!
    interface Port-channel12.120
    encapsulation dot1Q 120
ip address 10.10.120.2 255.255.255.128
    no ip redirects
    no ip directed-broadcast
    standby 120 priority 100
    standby 120 preempt
    standby 120 authentication C10-120
    standby 120 ip 10.10.120.1
standby 120 track GigabitEthernet49 20
standby 120 track GigabitEthernet50 20
!
    interface Port-channel12.125
    encapsulation dot1Q 125
ip address 10.10.120.130 255.255.255.128
    no ip redirects
    no ip directed-broadcast
    standby 125 priority 110
    standby 125 preempt
    standby 125 authentication C10-125
    standby 125 ip 10.10.120.129
standby 125 track GigabitEthernet49 20
standby 125 track GigabitEthernet50 20
!
    interface Port-channel13
description Channel_to_2948G-13
    no ip address
    no ip directed-broadcast
    hold-queue 300 in
!
    interface Port-channel13.1
encapsulation dot1Q 1 native
    no ip redirects
    no ip directed-broadcast
!
    interface Port-channel13.130
    encapsulation dot1Q 130
ip address 10.10.130.2 255.255.255.128
    no ip redirects
    no ip directed-broadcast
    standby 130 priority 100
    standby 130 preempt
    standby 130 authentication C10-130
    standby 130 ip 10.10.130.1
standby 130 track GigabitEthernet49 20
standby 130 track GigabitEthernet50 20
!
    interface Port-channel13.135
    encapsulation dot1Q 135
ip address 10.10.130.130 255.255.255.128
    no ip redirects
```

```
        no ip directed-broadcast
        standby 135 priority 110
            standby 135 preempt
    standby 135 authentication C10-135
        standby 135 ip 10.10.130.129
standby 135 track GigabitEthernet49 20
standby 135 track GigabitEthernet50 20
    !
        interface Port-channel14
description Channel_to_2948G-14
            no ip address
        no ip directed-broadcast
            hold-queue 300 in
    !
        interface Port-channel14.1
encapsulation dot1Q 1 native
            no ip redirects
        no ip directed-broadcast
    !
        interface Port-channel14.140
            encapsulation dot1Q 140
ip address 10.10.140.2 255.255.255.128
            no ip redirects
        no ip directed-broadcast
        standby 140 priority 100
            standby 140 preempt
        standby 140 authentication C10-140
            standby 140 ip 10.10.140.1
standby 140 track GigabitEthernet49 20
standby 140 track GigabitEthernet50 20
    !
        interface Port-channel14.145
            encapsulation dot1Q 145
ip address 10.10.140.130 255.255.255.128
            no ip redirects
        no ip directed-broadcast
        standby 145 priority 110
            standby 145 preempt
        standby 145 authentication C10-145
            standby 145 ip 10.10.140.129
standby 145 track GigabitEthernet49 20
standby 145 track GigabitEthernet50 20
    !
        interface Port-channel15
description Channel_to_2948G-15
            no ip address
        no ip directed-broadcast
            hold-queue 300 in
    !
        interface Port-channel15.1
encapsulation dot1Q 1 native
            no ip redirects
        no ip directed-broadcast
    !
        interface Port-channel15.150
            encapsulation dot1Q 150
ip address 10.10.150.2 255.255.255.128
            no ip redirects
        no ip directed-broadcast
        standby 150 priority 100
            standby 150 preempt
        standby 150 authentication C10-150
            standby 150 ip 10.10.150.1
standby 150 track GigabitEthernet49 20
```

```
standby 150 track GigabitEthernet50 20
!
interface Port-channel15.155
    encapsulation dot1Q 155
ip address 10.10.150.130 255.255.255.128
    no ip redirects
    no ip directed-broadcast
    standby 155 priority 110
    standby 155 preempt
    standby 155 authentication C10-155
    standby 155 ip 10.10.150.129
standby 155 track GigabitEthernet49 20
standby 155 track GigabitEthernet50 20
!
interface FastEthernet1
    no ip address
    no ip directed-broadcast
    channel-group 1
!
interface FastEthernet2
    no ip address
    no ip directed-broadcast
    channel-group 1
!
interface FastEthernet3
    no ip address
    no ip directed-broadcast
    channel-group 2
!
interface FastEthernet4
    no ip address
    no ip directed-broadcast
    channel-group 2
!
interface FastEthernet5
    no ip address
    no ip directed-broadcast
    channel-group 3
!
interface FastEthernet6
    no ip address
    no ip directed-broadcast
    channel-group 3
!
interface FastEthernet7
    no ip address
    no ip directed-broadcast
    channel-group 4
!
interface FastEthernet8
    no ip address
    no ip directed-broadcast
    channel-group 4
!
interface FastEthernet9
    no ip address
    no ip directed-broadcast
    channel-group 5
!
interface FastEthernet10
    no ip address
    no ip directed-broadcast
    channel-group 5
!
```

```
interface FastEthernet11
    no ip address
no ip directed-broadcast
    channel-group 6
    !
interface FastEthernet12
    no ip address
no ip directed-broadcast
    channel-group 6
    !
interface FastEthernet13
    no ip address
no ip directed-broadcast
    channel-group 7
    !
interface FastEthernet14
    no ip address
no ip directed-broadcast
    channel-group 7
    !
interface FastEthernet15
    no ip address
no ip directed-broadcast
    channel-group 8
    !
interface FastEthernet16
    no ip address
no ip directed-broadcast
    channel-group 8
    !
interface FastEthernet17
    no ip address
no ip directed-broadcast
    channel-group 9
    !
interface FastEthernet18
    no ip address
no ip directed-broadcast
    channel-group 9
    !
interface FastEthernet19
    no ip address
no ip directed-broadcast
    channel-group 10
    !
interface FastEthernet20
    no ip address
no ip directed-broadcast
    channel-group 10
    !
interface FastEthernet21
    no ip address
no ip directed-broadcast
    channel-group 11
    !
interface FastEthernet22
    no ip address
no ip directed-broadcast
    channel-group 11
    !
interface FastEthernet23
    no ip address
no ip directed-broadcast
    channel-group 12
```

```
!
interface FastEthernet24
  no ip address
no ip directed-broadcast
  channel-group 12
!
interface FastEthernet25
  no ip address
no ip directed-broadcast
  channel-group 13
!
interface FastEthernet26
  no ip address
no ip directed-broadcast
  channel-group 13
!
interface FastEthernet27
  no ip address
no ip directed-broadcast
  channel-group 14
!
interface FastEthernet28
  no ip address
no ip directed-broadcast
  channel-group 14
!
interface FastEthernet29
  no ip address
no ip directed-broadcast
  channel-group 15
!
interface FastEthernet30
  no ip address
no ip directed-broadcast
  channel-group 15
!
interface FastEthernet31
  no ip address
no ip directed-broadcast
  shutdown
!
interface FastEthernet32
  no ip address
no ip directed-broadcast
  shutdown
!
interface FastEthernet33
  no ip address
no ip directed-broadcast
  shutdown
!
interface FastEthernet34
  no ip address
no ip directed-broadcast
  shutdown
!
interface FastEthernet35
  no ip address
no ip directed-broadcast
  shutdown
!
interface FastEthernet36
  no ip address
no ip directed-broadcast
```

```
                shutdown
                !
            interface FastEthernet37
                no ip address
            no ip directed-broadcast
                shutdown
                !
            interface FastEthernet38
                no ip address
            no ip directed-broadcast
                shutdown
                !
            interface FastEthernet39
                no ip address
            no ip directed-broadcast
                shutdown
                !
            interface FastEthernet40
                no ip address
            no ip directed-broadcast
                shutdown
                !
            interface FastEthernet41
                no ip address
            no ip directed-broadcast
                shutdown
                !
            interface FastEthernet42
                no ip address
            no ip directed-broadcast
                shutdown
                !
            interface FastEthernet43
                no ip address
            no ip directed-broadcast
                shutdown
                !
            interface FastEthernet44
                no ip address
            no ip directed-broadcast
                shutdown
                !
            interface FastEthernet45
                no ip address
            no ip directed-broadcast
                shutdown
                !
            interface FastEthernet46
                no ip address
            no ip directed-broadcast
                shutdown
                !
            interface FastEthernet47
                no ip address
            no ip directed-broadcast
                shutdown
                !
            interface FastEthernet48
                no ip address
            no ip directed-broadcast
                shutdown
                !
            interface GigabitEthernet49
                description CoreVLAN15
```

```

        ip address 10.10.0.19 255.255.255.240
        no ip directed-broadcast
    ip summary-address eigrp 10 10.10.0.0 255.255.0.0
        !
        interface GigabitEthernet50
        description CoreVLAN10
        ip address 10.10.0.3 255.255.255.240
        no ip directed-broadcast
    ip summary-address eigrp 10 10.10.0.0 255.255.0.0
        delay 15
        !
        router eigrp 10
        passive-interface default
    no passive-interface GigabitEthernet49
    no passive-interface GigabitEthernet50
        network 10.0.0.0
        !
        ip classless
        !
        !
        line con 0
        transport input none
        line aux 0
        line vty 0 4
        password secret
        login
        !
        end

2948G-L3-01#

```

[Catalyst 2948G-L3-02 تكوين](#)

```

2948G-L3-02# show running-config
...Building configuration

:Current configuration
!
Last configuration change at 07:45:32 PST Fri Jun 23 2000 !
NVRAM config last updated at 07:45:33 PST Fri Jun 23 2000 !
!
version 12.0
no service pad
service timestamps debug datetime msec localtime
service timestamps log datetime msec localtime
no service password-encryption
!
hostname 2948G-L3-02
!
no logging console
enable password verysecret
!
clock timezone PST -8
clock calendar-valid
ip subnet-zero
!
!
!
interface Port-channel1
description Channel_to_2948G-01
no ip address

```



```
no ip directed-broadcast
    hold-queue 300 in
!
interface Port-channel1.1
encapsulation dot1Q 1 native
    no ip redirects
    no ip directed-broadcast
!
interface Port-channel1.10
    encapsulation dot1Q 10
ip address 10.10.10.3 255.255.255.128
    no ip redirects
    no ip directed-broadcast
    standby 10 priority 110
    standby 10 preempt
    standby 10 authentication C10-10
    standby 10 ip 10.10.10.1
standby 10 track GigabitEthernet49 20
standby 10 track GigabitEthernet50 20
!
interface Port-channel1.15
    encapsulation dot1Q 15
ip address 10.10.10.131 255.255.255.128
    no ip redirects
    no ip directed-broadcast
    standby 15 priority 100
    standby 15 preempt
    standby 15 authentication C10-15
    standby 15 ip 10.10.10.129
standby 15 track GigabitEthernet49 20
standby 15 track GigabitEthernet50 20
!
interface Port-channel2
description Channel_to_2948G-02
    no ip address
    no ip directed-broadcast
    hold-queue 300 in
!
interface Port-channel2.1
encapsulation dot1Q 1 native
    no ip redirects
    no ip directed-broadcast
!
interface Port-channel2.20
    encapsulation dot1Q 20
ip address 10.10.20.3 255.255.255.128
    no ip redirects
    no ip directed-broadcast
    standby 20 priority 110
    standby 20 preempt
    standby 20 authentication C10-20
    standby 20 ip 10.10.20.1
standby 20 track GigabitEthernet49 20
standby 20 track GigabitEthernet50 20
!
interface Port-channel2.25
    encapsulation dot1Q 25
ip address 10.10.20.131 255.255.255.128
    no ip redirects
    no ip directed-broadcast
    standby 25 priority 100
    standby 25 preempt
    standby 25 authentication C10-25
    standby 25 ip 10.10.20.129
```

```
standby 25 track GigabitEthernet49 20
standby 25 track GigabitEthernet50 20
!
    interface Port-channel3
description Channel_to_2948G-03
    no ip address
    no ip directed-broadcast
    hold-queue 300 in
!
    interface Port-channel3.1
encapsulation dot1Q 1 native
    no ip redirects
    no ip directed-broadcast
!
    interface Port-channel3.30
encapsulation dot1Q 30
ip address 10.10.30.3 255.255.255.128
    no ip redirects
    no ip directed-broadcast
    standby 30 priority 110
    standby 30 preempt
    standby 30 authentication C10-30
    standby 30 ip 10.10.30.1
standby 30 track GigabitEthernet49 20
standby 30 track GigabitEthernet50 20
!
    interface Port-channel3.35
encapsulation dot1Q 35
ip address 10.10.30.131 255.255.255.128
    no ip redirects
    no ip directed-broadcast
    standby 35 priority 100
    standby 35 preempt
    standby 35 authentication C10-35
    standby 35 ip 10.10.30.129
standby 35 track GigabitEthernet49 20
standby 35 track GigabitEthernet50 20
!
    interface Port-channel4
description Channel_to_2948G-04
    no ip address
    no ip directed-broadcast
    hold-queue 300 in
!
    interface Port-channel4.1
encapsulation dot1Q 1 native
    no ip redirects
    no ip directed-broadcast
!
    interface Port-channel4.40
encapsulation dot1Q 40
ip address 10.10.40.3 255.255.255.128
    no ip redirects
    no ip directed-broadcast
    standby 40 priority 110
    standby 40 preempt
    standby 40 authentication C10-40
    standby 40 ip 10.10.40.1
standby 40 track GigabitEthernet49 20
standby 40 track GigabitEthernet50 20
!
    interface Port-channel4.45
encapsulation dot1Q 45
ip address 10.10.40.131 255.255.255.128
```

```

        no ip redirects
        no ip directed-broadcast
        standby 45 priority 100
        standby 45 preempt
    standby 45 authentication C10-45
        standby 45 ip 10.10.40.129
standby 45 track GigabitEthernet49 20
standby 45 track GigabitEthernet50 20
    !
    interface Port-channel5
    description Channel_to_2948G-05
        no ip address
        no ip directed-broadcast
        hold-queue 300 in
    !
    interface Port-channel5.1
    encapsulation dot1Q 1 native
        no ip redirects
        no ip directed-broadcast
    !
    interface Port-channel5.50
    encapsulation dot1Q 50
ip address 10.10.50.3 255.255.255.128
        no ip redirects
        no ip directed-broadcast
        standby 50 priority 110
        standby 50 preempt
    standby 50 authentication C10-50
        standby 50 ip 10.10.50.1
    standby 50 track GigabitEthernet49 20
    standby 50 track GigabitEthernet50 20
    !
    interface Port-channel5.55
    encapsulation dot1Q 55
ip address 10.10.50.131 255.255.255.128
        no ip redirects
        no ip directed-broadcast
        standby 55 priority 100
        standby 55 preempt
    standby 55 authentication C10-55
        standby 55 ip 10.10.50.129
    standby 55 track GigabitEthernet49 20
    standby 55 track GigabitEthernet50 20
    !
    interface Port-channel6
    description Channel_to_2948G-06
        no ip address
        no ip directed-broadcast
        hold-queue 300 in
    !
    interface Port-channel6.1
    encapsulation dot1Q 1 native
        no ip redirects
        no ip directed-broadcast
    !
    interface Port-channel6.60
    encapsulation dot1Q 60
ip address 10.10.60.3 255.255.255.128
        no ip redirects
        no ip directed-broadcast
        standby 60 priority 110
        standby 60 preempt
    standby 60 authentication C10-60
        standby 60 ip 10.10.60.1
```

```
standby 60 track GigabitEthernet49 20
standby 60 track GigabitEthernet50 20
!
interface Port-channel6.65
encapsulation dot1Q 65
ip address 10.10.60.131 255.255.255.128
no ip redirects
no ip directed-broadcast
standby 65 priority 100
standby 65 preempt
standby 65 authentication C10-65
standby 65 ip 10.10.60.129
standby 65 track GigabitEthernet49 20
standby 65 track GigabitEthernet50 20
!
interface Port-channel7
description Channel_to_2948G-07
no ip address
no ip directed-broadcast
hold-queue 300 in
!
interface Port-channel7.1
encapsulation dot1Q 1 native
no ip redirects
no ip directed-broadcast
!
interface Port-channel7.70
encapsulation dot1Q 70
ip address 10.10.70.3 255.255.255.128
no ip redirects
no ip directed-broadcast
standby 70 priority 110
standby 70 preempt
standby 70 authentication C10-70
standby 70 ip 10.10.70.1
standby 70 track GigabitEthernet49 20
standby 70 track GigabitEthernet50 20
!
interface Port-channel7.75
encapsulation dot1Q 75
ip address 10.10.70.131 255.255.255.128
no ip redirects
no ip directed-broadcast
standby 75 priority 100
standby 75 preempt
standby 75 authentication C10-75
standby 75 ip 10.10.70.129
standby 75 track GigabitEthernet49 20
standby 75 track GigabitEthernet50 20
!
interface Port-channel8
description Channel_to_2948G-08
no ip address
no ip directed-broadcast
hold-queue 300 in
!
interface Port-channel8.1
encapsulation dot1Q 1 native
no ip redirects
no ip directed-broadcast
!
interface Port-channel8.80
encapsulation dot1Q 80
ip address 10.10.80.3 255.255.255.128
```

```

        no ip redirects
        no ip directed-broadcast
        standby 80 priority 110
        standby 80 preempt
    standby 80 authentication C10-80
        standby 80 ip 10.10.80.1
    standby 80 track GigabitEthernet49 20
    standby 80 track GigabitEthernet50 20
    !
    interface Port-channel8.85
        encapsulation dot1Q 85
    ip address 10.10.80.131 255.255.255.128
        no ip redirects
        no ip directed-broadcast
        standby 85 priority 100
        standby 85 preempt
    standby 85 authentication C10-85
        standby 85 ip 10.10.80.129
    standby 85 track GigabitEthernet49 20
    standby 85 track GigabitEthernet50 20
    !
    interface Port-channel9
    description Channel_to_2948G-09
        no ip address
        no ip directed-broadcast
        hold-queue 300 in
    !
    interface Port-channel9.1
    encapsulation dot1Q 1 native
        no ip redirects
        no ip directed-broadcast
    !
    interface Port-channel9.90
        encapsulation dot1Q 90
    ip address 10.10.90.3 255.255.255.128
        no ip redirects
        no ip directed-broadcast
        standby 90 priority 110
        standby 90 preempt
    standby 90 authentication C10-90
        standby 90 ip 10.10.90.1
    standby 90 track GigabitEthernet49 20
    standby 90 track GigabitEthernet50 20
    !
    interface Port-channel9.95
        encapsulation dot1Q 95
    ip address 10.10.90.131 255.255.255.128
        no ip redirects
        no ip directed-broadcast
        standby 95 priority 100
        standby 95 preempt
    standby 95 authentication C10-95
        standby 95 ip 10.10.90.129
    standby 95 track GigabitEthernet49 20
    standby 95 track GigabitEthernet50 20
    !
    interface Port-channel10
    description Channel_to_2948G-10
        no ip address
        no ip directed-broadcast
        hold-queue 300 in
    !
    interface Port-channel10.1
    encapsulation dot1Q 1 native
```

```

        no ip redirects
        no ip directed-broadcast
        !
    interface Port-channel10.100
        encapsulation dot1Q 100
    ip address 10.10.100.3 255.255.255.128
        no ip redirects
        no ip directed-broadcast
        standby 100 priority 110
        standby 100 preempt
    standby 100 authentication C10-100
        standby 100 ip 10.10.100.1
    standby 100 track GigabitEthernet49 20
    standby 100 track GigabitEthernet50 20
        !
    interface Port-channel10.105
        encapsulation dot1Q 105
    ip address 10.10.100.131 255.255.255.128
        no ip redirects
        no ip directed-broadcast
        standby 105 priority 100
        standby 105 preempt
    standby 105 authentication C10-105
        standby 105 ip 10.10.100.129
    standby 105 track GigabitEthernet49 20
    standby 105 track GigabitEthernet50 20
        !
    interface Port-channel11
    description Channel_to_2948G-11
        no ip address
        no ip directed-broadcast
        hold-queue 300 in
        !
    interface Port-channel11.1
    encapsulation dot1Q 1 native
        no ip redirects
        no ip directed-broadcast
        !
    interface Port-channel11.110
        encapsulation dot1Q 110
    ip address 10.10.110.3 255.255.255.128
        no ip redirects
        no ip directed-broadcast
        standby 110 priority 110
        standby 110 preempt
    standby 110 authentication C10-110
        standby 110 ip 10.10.110.1
    standby 110 track GigabitEthernet49 20
    standby 110 track GigabitEthernet50 20
        !
    interface Port-channel11.115
        encapsulation dot1Q 115
    ip address 10.10.110.131 255.255.255.128
        no ip redirects
        no ip directed-broadcast
        standby 115 priority 100
        standby 115 preempt
    standby 115 authentication C10-115
        standby 115 ip 10.10.110.129
    standby 115 track GigabitEthernet49 20
    standby 115 track GigabitEthernet50 20
        !
    interface Port-channel12
    description Channel_to_2948G-12
```

```

        no ip address
        no ip directed-broadcast
        hold-queue 300 in
        !
    interface Port-channel12.1
    encapsulation dot1Q 1 native
        no ip redirects
        no ip directed-broadcast
        !
    interface Port-channel12.120
        encapsulation dot1Q 120
    ip address 10.10.120.3 255.255.255.128
        no ip redirects
        no ip directed-broadcast
        standby 120 priority 110
        standby 120 preempt
        standby 120 authentication C10-120
        standby 120 ip 10.10.120.1
    standby 120 track GigabitEthernet49 20
    standby 120 track GigabitEthernet50 20
        !
    interface Port-channel12.125
        encapsulation dot1Q 125
    ip address 10.10.120.131 255.255.255.128
        no ip redirects
        no ip directed-broadcast
        standby 125 priority 100
        standby 125 preempt
        standby 125 authentication C10-125
        standby 125 ip 10.10.120.129
    standby 125 track GigabitEthernet49 20
    standby 125 track GigabitEthernet50 20
        !
    interface Port-channel13
    description Channel_to_2948G-13
        no ip address
        no ip directed-broadcast
        hold-queue 300 in
        !
    interface Port-channel13.1
    encapsulation dot1Q 1 native
        no ip redirects
        no ip directed-broadcast
        !
    interface Port-channel13.130
        encapsulation dot1Q 130
    ip address 10.10.130.3 255.255.255.128
        no ip redirects
        no ip directed-broadcast
        standby 130 priority 110
        standby 130 preempt
        standby 130 authentication C10-130
        standby 130 ip 10.10.130.1
    standby 130 track GigabitEthernet49 20
    standby 130 track GigabitEthernet50 20
        !
    interface Port-channel13.135
        encapsulation dot1Q 135
    ip address 10.10.130.131 255.255.255.128
        no ip redirects
        no ip directed-broadcast
        standby 135 priority 100
        standby 135 preempt
        standby 135 authentication C10-135

```

```
        standby 135 ip 10.10.130.129
standby 135 track GigabitEthernet49 20
standby 135 track GigabitEthernet50 20
!
        interface Port-channel14
description Channel_to_2948G-14
        no ip address
        no ip directed-broadcast
        hold-queue 300 in
!
        interface Port-channel14.1
encapsulation dot1Q 1 native
        no ip redirects
        no ip directed-broadcast
!
        interface Port-channel14.140
        encapsulation dot1Q 140
ip address 10.10.140.3 255.255.255.128
        no ip redirects
        no ip directed-broadcast
        standby 140 priority 110
        standby 140 preempt
        standby 140 authentication C10-140
        standby 140 ip 10.10.140.1
standby 140 track GigabitEthernet49 20
standby 140 track GigabitEthernet50 20
!
        interface Port-channel14.145
        encapsulation dot1Q 145
ip address 10.10.140.131 255.255.255.128
        no ip redirects
        no ip directed-broadcast
        standby 145 priority 100
        standby 145 preempt
        standby 145 authentication C10-145
        standby 145 ip 10.10.140.129
standby 145 track GigabitEthernet49 20
standby 145 track GigabitEthernet50 20
!
        interface Port-channel15
description Channel_to_2948G-15
        no ip address
        no ip directed-broadcast
        hold-queue 300 in
!
        interface Port-channel15.1
encapsulation dot1Q 1 native
        no ip redirects
        no ip directed-broadcast
!
        interface Port-channel15.150
        encapsulation dot1Q 150
ip address 10.10.150.3 255.255.255.128
        no ip redirects
        no ip directed-broadcast
        standby 150 priority 110
        standby 150 preempt
        standby 150 authentication C10-150
        standby 150 ip 10.10.150.1
standby 150 track GigabitEthernet49 20
standby 150 track GigabitEthernet50 20
!
        interface Port-channel15.155
        encapsulation dot1Q 155
```



```
ip address 10.10.150.131 255.255.255.128
    no ip redirects
    no ip directed-broadcast
    standby 155 priority 100
        standby 155 preempt
    standby 155 authentication C10-155
        standby 155 ip 10.10.150.129
standby 155 track GigabitEthernet49 20
standby 155 track GigabitEthernet50 20
!
interface FastEthernet1
    no ip address
no ip directed-broadcast
    channel-group 1
!
interface FastEthernet2
    no ip address
no ip directed-broadcast
    channel-group 1
!
interface FastEthernet3
    no ip address
no ip directed-broadcast
    channel-group 2
!
interface FastEthernet4
    no ip address
no ip directed-broadcast
    channel-group 2
!
interface FastEthernet5
    no ip address
no ip directed-broadcast
    channel-group 3
!
interface FastEthernet6
    no ip address
no ip directed-broadcast
    channel-group 3
!
interface FastEthernet7
    no ip address
no ip directed-broadcast
    channel-group 4
!
interface FastEthernet8
    no ip address
no ip directed-broadcast
    channel-group 4
!
interface FastEthernet9
    no ip address
no ip directed-broadcast
    channel-group 5
!
interface FastEthernet10
    no ip address
no ip directed-broadcast
    channel-group 5
!
interface FastEthernet11
    no ip address
no ip directed-broadcast
    channel-group 6
```

```
!
interface FastEthernet12
  no ip address
no ip directed-broadcast
  channel-group 6
!
interface FastEthernet13
  no ip address
no ip directed-broadcast
  channel-group 7
!
interface FastEthernet14
  no ip address
no ip directed-broadcast
  channel-group 7
!
interface FastEthernet15
  no ip address
no ip directed-broadcast
  channel-group 8
!
interface FastEthernet16
  no ip address
no ip directed-broadcast
  channel-group 8
!
interface FastEthernet17
  no ip address
no ip directed-broadcast
  channel-group 9
!
interface FastEthernet18
  no ip address
no ip directed-broadcast
  channel-group 9
!
interface FastEthernet19
  no ip address
no ip directed-broadcast
  channel-group 10
!
interface FastEthernet20
  no ip address
no ip directed-broadcast
  channel-group 10
!
interface FastEthernet21
  no ip address
no ip directed-broadcast
  channel-group 11
!
interface FastEthernet22
  no ip address
no ip directed-broadcast
  channel-group 11
!
interface FastEthernet23
  no ip address
no ip directed-broadcast
  channel-group 12
!
interface FastEthernet24
  no ip address
no ip directed-broadcast
```

```
channel-group 12
!
interface FastEthernet25
no ip address
no ip directed-broadcast
channel-group 13
!
interface FastEthernet26
no ip address
no ip directed-broadcast
channel-group 13
!
interface FastEthernet27
no ip address
no ip directed-broadcast
channel-group 14
!
interface FastEthernet28
no ip address
no ip directed-broadcast
channel-group 14
!
interface FastEthernet29
no ip address
no ip directed-broadcast
channel-group 15
!
interface FastEthernet30
no ip address
no ip directed-broadcast
channel-group 15
!
interface FastEthernet31
no ip address
no ip directed-broadcast
shutdown
!
interface FastEthernet32
no ip address
no ip directed-broadcast
shutdown
!
interface FastEthernet33
no ip address
no ip directed-broadcast
shutdown
!
interface FastEthernet34
no ip address
no ip directed-broadcast
shutdown
!
interface FastEthernet35
no ip address
no ip directed-broadcast
shutdown
!
interface FastEthernet36
no ip address
no ip directed-broadcast
shutdown
!
interface FastEthernet37
no ip address
```

```
no ip directed-broadcast
    shutdown
    !
interface FastEthernet38
    no ip address
no ip directed-broadcast
    shutdown
    !
interface FastEthernet39
    no ip address
no ip directed-broadcast
    shutdown
    !
interface FastEthernet40
    no ip address
no ip directed-broadcast
    shutdown
    !
interface FastEthernet41
    no ip address
no ip directed-broadcast
    shutdown
    !
interface FastEthernet42
    no ip address
no ip directed-broadcast
    shutdown
    !
interface FastEthernet43
    no ip address
no ip directed-broadcast
    shutdown
    !
interface FastEthernet44
    no ip address
no ip directed-broadcast
    shutdown
    !
interface FastEthernet45
    no ip address
no ip directed-broadcast
    shutdown
    !
interface FastEthernet46
    no ip address
no ip directed-broadcast
    shutdown
    !
interface FastEthernet47
    no ip address
no ip directed-broadcast
    shutdown
    !
interface FastEthernet48
    no ip address
no ip directed-broadcast
    shutdown
    !
interface GigabitEthernet49
    description CoreVLAN10
    ip address 10.10.0.4 255.255.255.240
    no ip directed-broadcast
ip summary-address eigrp 10 10.10.0.0 255.255.0.0
    !
```

```

interface GigabitEthernet50
    description CoreVLAN15
ip address 10.10.0.20 255.255.255.240
    no ip directed-broadcast
ip summary-address eigrp 10 10.10.0.0 255.255.0.0
    delay 15
!
router eigrp 10
    passive-interface default
no passive-interface GigabitEthernet49
no passive-interface GigabitEthernet50
    network 10.0.0.0
!
ip classless
!
!
line con 0
transport input none
line aux 0
line vty 0 4
password secret
login
!
end

2948G-L3-02#

```

[تكوين Catalyst 2948G-01](#)

```

2948G-01> (enable) show config
.This command shows non-default configurations only
.Use 'show config all' to show both default and non-default configurations
.....
.....
..
begin
!
***** NON-DEFAULT CONFIGURATION ***** #
!
!
time: Mon Jun 22 2000, 15:39:38#
!
(version 5.4(3#
!
!
system web interface version#
!
.set enablepass $2$FNl3$8MSzcpVMg1H2aWfll13aZ
!
system#
set system name 2948G-01
set system location Closet10-01
set system contact sysadmin@corp.com
!
frame distribution method#
set port channel all distribution mac both
!
vtp#
set vtp domain Closet-10-01

```

```

set vtp mode transparent
set vlan 1 name default type ethernet mtu 1500 said 100001 state active
set vlan 10 name 10.10.10.0/25 type ethernet mtu 1500 said 100010 state active
set vlan 15 name 10.10.10.128/25 type ethernet mtu 1500 said 100015 state
active
set vlan 1002 name fddi-default type fddi mtu 1500 said 101002 state active
set vlan 1004 name fddinet-default type fddinet mtu 1500 said 101004 state
active stp ieee
set vlan 1005 name trnet-default type trbrf mtu 1500 said 101005 state active
stp ibm
set vlan 1003 name token-ring-default type trcrf mtu 1500 said 101003 state
active mode srb aremaxhop 7 stemaxhop 7 backupcrf off
!
ip#
set interface sc0 10 10.10.10.4/255.255.255.128 10.10.10.127
!
set interface sl0 down
set interface me1 down
set ip route 0.0.0.0/0.0.0.0 10.10.10.1
!
syslog#
set logging console disable
!
set boot command#
set boot config-register 0x2102
set boot system flash bootflash:cat4000.5-4-2.bin
set boot system flash bootflash:cat4000.5-2-2.bin
set boot system flash bootflash:cat4000.4-5-2.bin
!
port channel#
set port channel 2/45-46 40
set port channel 2/47-48 41
!
module 1 : 0-port Switching Supervisor#
!
module 2 : 50-port 10/100/1000 Ethernet#
set vlan 10 2/1-22
set vlan 15 2/23-44
set port name 2/45 2948G-L3-01_Uplink
set port name 2/46 2948G-L3-01_Uplink
set port name 2/47 2948G-L3-02_Uplink
set port name 2/48 2948G-L3-02_Uplink
set trunk 2/1 off dot1q 1-1005
set trunk 2/2 off dot1q 1-1005
set trunk 2/3 off dot1q 1-1005
set trunk 2/4 off dot1q 1-1005
set trunk 2/5 off dot1q 1-1005
set trunk 2/6 off dot1q 1-1005
set trunk 2/7 off dot1q 1-1005
set trunk 2/8 off dot1q 1-1005
set trunk 2/9 off dot1q 1-1005
set trunk 2/10 off dot1q 1-1005
set trunk 2/11 off dot1q 1-1005
set trunk 2/12 off dot1q 1-1005
set trunk 2/13 off dot1q 1-1005
set trunk 2/14 off dot1q 1-1005
set trunk 2/15 off dot1q 1-1005
set trunk 2/16 off dot1q 1-1005
set trunk 2/17 off dot1q 1-1005
set trunk 2/18 off dot1q 1-1005
set trunk 2/19 off dot1q 1-1005
set trunk 2/20 off dot1q 1-1005
set trunk 2/21 off dot1q 1-1005
set trunk 2/22 off dot1q 1-1005

```

```

set trunk 2/23 off dot1q 1-1005
set trunk 2/24 off dot1q 1-1005
set trunk 2/25 off dot1q 1-1005
set trunk 2/26 off dot1q 1-1005
set trunk 2/27 off dot1q 1-1005
set trunk 2/28 off dot1q 1-1005
set trunk 2/29 off dot1q 1-1005
set trunk 2/30 off dot1q 1-1005
set trunk 2/31 off dot1q 1-1005
set trunk 2/32 off dot1q 1-1005
set trunk 2/33 off dot1q 1-1005
set trunk 2/34 off dot1q 1-1005
set trunk 2/35 off dot1q 1-1005
set trunk 2/36 off dot1q 1-1005
set trunk 2/37 off dot1q 1-1005
set trunk 2/38 off dot1q 1-1005
set trunk 2/39 off dot1q 1-1005
set trunk 2/40 off dot1q 1-1005
set trunk 2/41 off dot1q 1-1005
set trunk 2/42 off dot1q 1-1005
set trunk 2/43 off dot1q 1-1005
set trunk 2/44 off dot1q 1-1005
set trunk 2/45 nonegotiate dot1q 1-1005
set trunk 2/46 nonegotiate dot1q 1-1005
set trunk 2/47 nonegotiate dot1q 1-1005
set trunk 2/48 nonegotiate dot1q 1-1005
set spantree portfast 2/1-44 enable
set port channel 2/45-48 mode on
set port channel 2/1-44 mode off
end
(2948G-01> (enable

```

Catalyst 2948G-15 تکوین

```

2948G-15> (enable) show config
.This command shows non-default configurations only
.Use 'show config all' to show both default and non-default configurations
.....

```

```

.....
..
begin
!
***** NON-DEFAULT CONFIGURATION ***** #
!
!
time: Mon Jun 22 2000, 15:41:38#
!
(version 5.4(3#
!
!
system web interface version#
!
.set enablepass $2$FNl3$8MSzcpVMg1H2aWfll13aZ
!
system#
set system name 2948G-15
set system location Closet10-15
set system contact sysadmin@corp.com
!
frame distribution method#
set port channel all distribution mac both

```

```

!
vtp#
set vtp domain Closet-10-15
set vtp mode transparent
set vlan 1 name default type ethernet mtu 1500 said 100001 state active
set vlan 150 name 10.10.150.0/25 type ethernet mtu 1500 said 100010 state active
set vlan 155 name 10.10.150.128/25 type ethernet mtu 1500 said 100015 state
active
set vlan 1002 name fddi-default type fddi mtu 1500 said 101002 state active
set vlan 1004 name fddinet-default type fddinet mtu 1500 said 101004 state
active stp ieee
set vlan 1005 name trnet-default type trbrf mtu 1500 said 101005 state active
stp ibm
set vlan 1003 name token-ring-default type trcrf mtu 1500 said 101003 state
active mode srb aremaxhop 7 stemaxhop 7 backupcrf off
!
ip#
set interface sc0 10 10.10.150.4/255.255.255.128 10.10.10.127
set interface sl0 down
set interface me1 down
set ip route 0.0.0.0/0.0.0.0 10.10.150.1
!
syslog#
set logging console disable
!
set boot command#
set boot config-register 0x2102
set boot system flash bootflash:cat4000.5-4-2.bin
set boot system flash bootflash:cat4000.5-2-2.bin
set boot system flash bootflash:cat4000.4-5-2.bin
!
port channel#
set port channel 2/45-46 40
set port channel 2/47-48 41
!
module 1 : 0-port Switching Supervisor#
!
module 2 : 50-port 10/100/1000 Ethernet#
set vlan 150 2/1-22
set vlan 155 2/23-44
set port name 2/45 2948G-L3-01_Uplink
set port name 2/46 2948G-L3-01_Uplink
set port name 2/47 2948G-L3-02_Uplink
set port name 2/48 2948G-L3-02_Uplink
set trunk 2/1 off dot1q 1-1005
set trunk 2/2 off dot1q 1-1005
set trunk 2/3 off dot1q 1-1005
set trunk 2/4 off dot1q 1-1005
set trunk 2/5 off dot1q 1-1005
set trunk 2/6 off dot1q 1-1005
set trunk 2/7 off dot1q 1-1005
set trunk 2/8 off dot1q 1-1005
set trunk 2/9 off dot1q 1-1005
set trunk 2/10 off dot1q 1-1005
set trunk 2/11 off dot1q 1-1005
set trunk 2/12 off dot1q 1-1005
set trunk 2/13 off dot1q 1-1005
set trunk 2/14 off dot1q 1-1005
set trunk 2/15 off dot1q 1-1005
set trunk 2/16 off dot1q 1-1005
set trunk 2/17 off dot1q 1-1005
set trunk 2/18 off dot1q 1-1005
set trunk 2/19 off dot1q 1-1005

```



```

set trunk 2/20 off dot1q 1-1005
set trunk 2/21 off dot1q 1-1005
set trunk 2/22 off dot1q 1-1005
set trunk 2/23 off dot1q 1-1005
set trunk 2/24 off dot1q 1-1005
set trunk 2/25 off dot1q 1-1005
set trunk 2/26 off dot1q 1-1005
set trunk 2/27 off dot1q 1-1005
set trunk 2/28 off dot1q 1-1005
set trunk 2/29 off dot1q 1-1005
set trunk 2/30 off dot1q 1-1005
set trunk 2/31 off dot1q 1-1005
set trunk 2/32 off dot1q 1-1005
set trunk 2/33 off dot1q 1-1005
set trunk 2/34 off dot1q 1-1005
set trunk 2/35 off dot1q 1-1005
set trunk 2/36 off dot1q 1-1005
set trunk 2/37 off dot1q 1-1005
set trunk 2/38 off dot1q 1-1005
set trunk 2/39 off dot1q 1-1005
set trunk 2/40 off dot1q 1-1005
set trunk 2/41 off dot1q 1-1005
set trunk 2/42 off dot1q 1-1005
set trunk 2/43 off dot1q 1-1005
set trunk 2/44 off dot1q 1-1005
set trunk 2/45 nonegotiate dot1q 1-1005
set trunk 2/46 nonegotiate dot1q 1-1005
set trunk 2/47 nonegotiate dot1q 1-1005
set trunk 2/48 nonegotiate dot1q 1-1005
set spantree portfast 2/1-44 enable
set port channel 2/45-48 mode on
set port channel 2/1-44 mode off
end
(2948G-15> (enable

```

Catalyst 6506-01 تکوین

```

enable) show config) <6506-01
.This command shows non-default configurations only
.Use 'show config all' to show both default and non-default configurations
.....
.....
..

begin
!
***** NON-DEFAULT CONFIGURATION ***** #
!
!
time: Fri Jun 23 2000, 13:05:49#
!
(version 5.4(3#
!
!
system web interface version Engine: 5.1 ADP device: Cat6000 ADP Version: 1.2#
ADK: 31
!
/set password $2$JYD3$CchOBhHYnLzI900B9F10v
set enablepass $2$93UN$/2fd2eCwlRdUSkklJ/KZ21
!
system#
set system name 6506-01
set system location Core-MDF-10

```

```

set system contact sysadmin@corp.com
!
!#
vtp#
set vtp domain Core-Domain
set vlan 1 name default type ethernet mtu 1500 said 100001 state active
set vlan 10 name Aggregation-10.10.0.0/16-Even type ethernet mtu 1500 said
state active 100010
set vlan 15 name Aggregation-10.10.0.0/16-Odd type ethernet mtu 1500 said
state active 100015
set vlan 1002 name fddi-default type fddi mtu 1500 said 101002 state active
set vlan 1004 name fddinet-default type fddinet mtu 1500 said 101004 state
active stp ieee
set vlan 1005 name trnet-default type trbrf mtu 1500 said 101005 state active
stp ibm
set vlan 1003 name token-ring-default type trcrf mtu 1500 said 101003 state
active mode srb aremaxhop 7 stemaxhop 7 backupcrf off
!
ip#
set interface sc0 1 10.1.1.4/255.255.255.0 10.1.1.255

set ip route 0.0.0.0/0.0.0.0 10.1.1.1
!
syslog#
set logging console disable
!
set boot command#
set boot config-register 0x2102
set boot system flash bootflash:cat6000-supcv.5-4-3.bin
!
port channel#
set port channel 2/7-8,3/7-8 428
!
default port status is enable #
!
!
module 1 : 2-port 1000BaseX Supervisor#
!
module 2 : 8-port 1000BaseX Ethernet#
set port name 2/7 Cat6506-02
set port name 2/8 Cat6506-02
set trunk 2/7 desirable isl 1-1005
set trunk 2/8 desirable isl 1-1005
set port channel 2/7-8 mode on
!
module 3 : 8-port 1000BaseX Ethernet#
set port name 3/7 Cat6506-02
set port name 3/8 Cat6506-02
set trunk 3/7 desirable isl 1-1005
set trunk 3/8 desirable isl 1-1005
set port channel 3/7-8 mode on
!
module 4 : 8-port 1000BaseX Ethernet#
set vlan 15 4/1
!
module 5 : 8-port 1000BaseX Ethernet#
set vlan 15 5/1
!
module 6 : 48-port 10/100BaseTX Ethernet#
!
module 15 : 1-port Multilayer Switch Feature Card#
!
module 16 empty#
end

```

(enable) <6506-01

Catalyst 6506-02 تكوين

```
enable) show config) <6506-02
.This command shows non-default configurations only
.Use 'show config all' to show both default and non-default configurations
.....
.....
..

begin
!
***** NON-DEFAULT CONFIGURATION ***** #
!
!
time: Fri Jun 23 2000, 13:07:49#
!
(version 5.4(3#
!
!
system web interface version Engine: 5.1 ADP device: Cat6000 ADP Version: 1.2#
ADK: 31
!
/set password $2$JYD3$CchOBhHYnLzI900B9F10v
set enablepass $2$93UN$/2fd2eCwlrDUSkklJ/KZ21
!
system#
set system name 6506-02
set system location Core-MDF-10
set system contact sysadmin@corp.com
!
!#
vtp#
set vtp domain Core-Domain
set vlan 1 name default type ethernet mtu 1500 said 100001 state active
set vlan 10 name Aggregation-10.10.0.0/16-Even type ethernet mtu 1500 said
state active 100010
set vlan 15 name Aggregation-10.10.0.0/16-Odd type ethernet mtu 1500 said
state active 100015
set vlan 1002 name fddi-default type fddi mtu 1500 said 101002 state active
set vlan 1004 name fddinet-default type fddinet mtu 1500 said 101004 state
active stp ieee
set vlan 1005 name trnet-default type trbrf mtu 1500 said 101005 state active
stp ibm
set vlan 1003 name token-ring-default type trcrf mtu 1500 said 101003 state
active mode srb aremaxhop 7 stemaxhop 7 backupcrf off
!
ip#
set interface sc0 1 10.1.1.5/255.255.255.0 10.1.1.255

set ip route 0.0.0.0/0.0.0.0 10.1.1.1
!
syslog#
set logging console disable
!
set boot command#
set boot config-register 0x2102
set boot system flash bootflash:cat6000-supcv.5-4-3.bin
!
port channel#
set port channel 2/7-8,3/7-8 448
!
```

```
default port status is enable #
!
!
module 1 : 2-port 1000BaseX Supervisor#
!
module 2 : 8-port 1000BaseX Ethernet#
set port name      2/7  Cat6506-01
set port name      2/8  Cat6506-01
set trunk 2/7  desirable isl 1-1005
set trunk 2/8  desirable isl 1-1005
set port channel 2/7-8 mode on
!
module 3 : 8-port 1000BaseX Ethernet#
set port name      3/7  Cat6506-01
set port name      3/8  Cat6506-01
set trunk 3/7  desirable isl 1-1005
set trunk 3/8  desirable isl 1-1005
set port channel 3/7-8 mode on
!
module 4 : 8-port 1000BaseX Ethernet#
set vlan 10  4/1
!
module 5 : 8-port 1000BaseX Ethernet#
set vlan 10  5/1
!
module 6 : 48-port 10/100BaseTX Ethernet#
!
module 15 : 1-port Multilayer Switch Feature Card#
!
module 16 empty#
end
(enable) <6506-02
```

[معلومات ذات صلة](#)

- [صفحات دعم منتجات شبكة LAN](#)
- [صفحة دعم تحويل شبكة LAN](#)
- [الدعم الفني - Cisco Systems](#)

ةمچرتل هذه ل و ح

ةلأل تاي نقتل ن م ة و مچ م ادخت ساب دن تسمل اذ ه Cisco ت مچرت
ملاعلاء نأ عي مچ ي ف ن ي م دخت سمل ل معد ي و تح م مي دقت ل ة ي رش ب ل و
امك ة ق ي قد ن و ك ت ن ل ة ي ل ة مچرت ل ض ف أن ة ظ حال م ي ج ر ي . ة ص ا خ ل م ه ت غ ل ب
Cisco ي ل خ ت . ف ر ت ح م مچرت م ا ه م د ق ي ي ت ل ا ة ي ف ا ر ت ح ا ل ا ة مچرت ل ا ع م ل ا ح ل ا و ه
ي ل ا م ئ ا د ع و ج ر ل ا ب ي ص و ت و ت ا مچرت ل ا ه ذ ه ة ق د ن ع ا ه ت ي ل و ئ س م Cisco
Systems (ر ف و ت م ط ب ا ر ل ا) ي ل ص أ ل ا ي ز ي ل ج ن إ ل ا دن تسمل ا